

Appendix 2

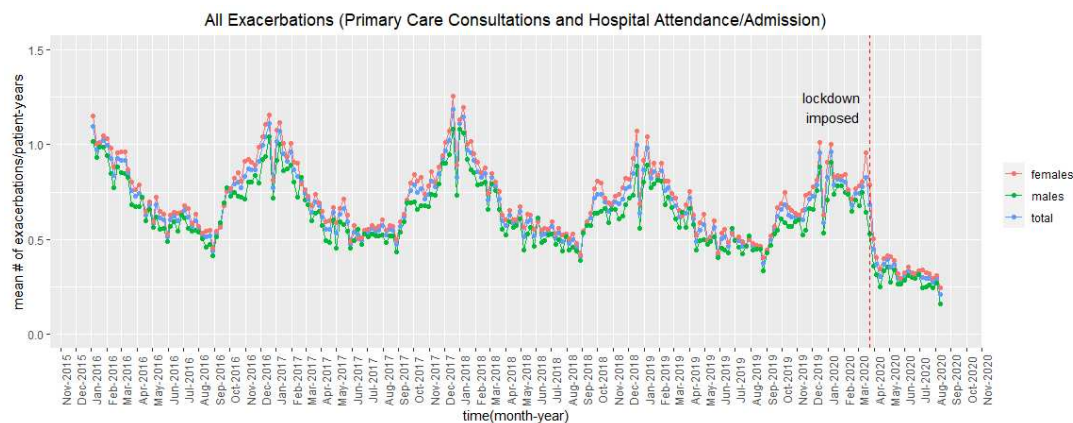


Figure S1: Mean exacerbation rate for every week, from January 2016 - August 2020 across England stratified by gender

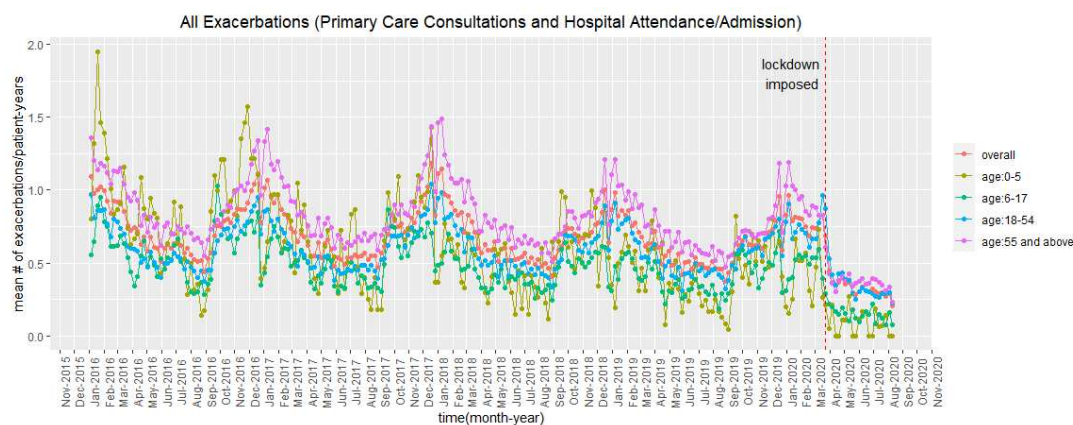


Figure S2: Mean exacerbation rate for every week, from January 2016 - August 2020 across England stratified by age group

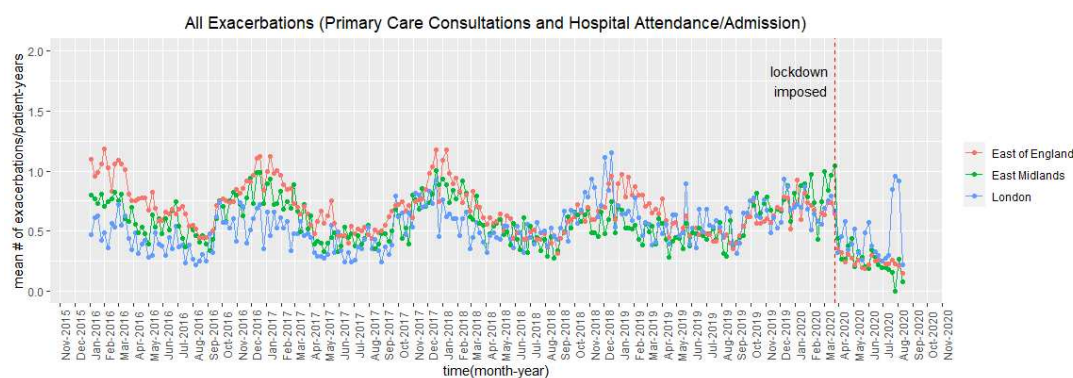


Figure S3: Mean exacerbation rate for every week, from January 2016 - August 2020 across England stratified by region (East of England, East Midlands, London)

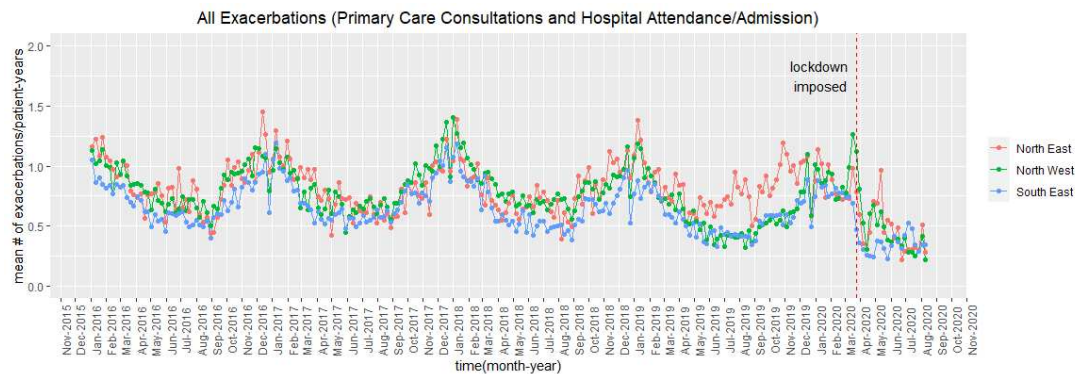


Figure S4: Mean exacerbation rate for every week, from January 2016 - August 2020 across England stratified by region (North East, North West, South East)

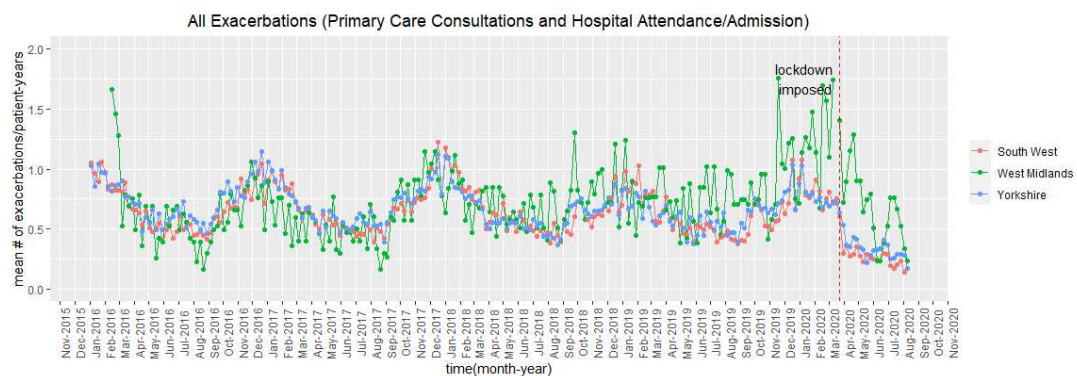


Figure S5: Mean exacerbation rate for every week, from January 2016 - August 2020 across England stratified by region (South West, West Midlands, Yorkshire)