

Supplementary figures

Figure S1. Article flow diagram

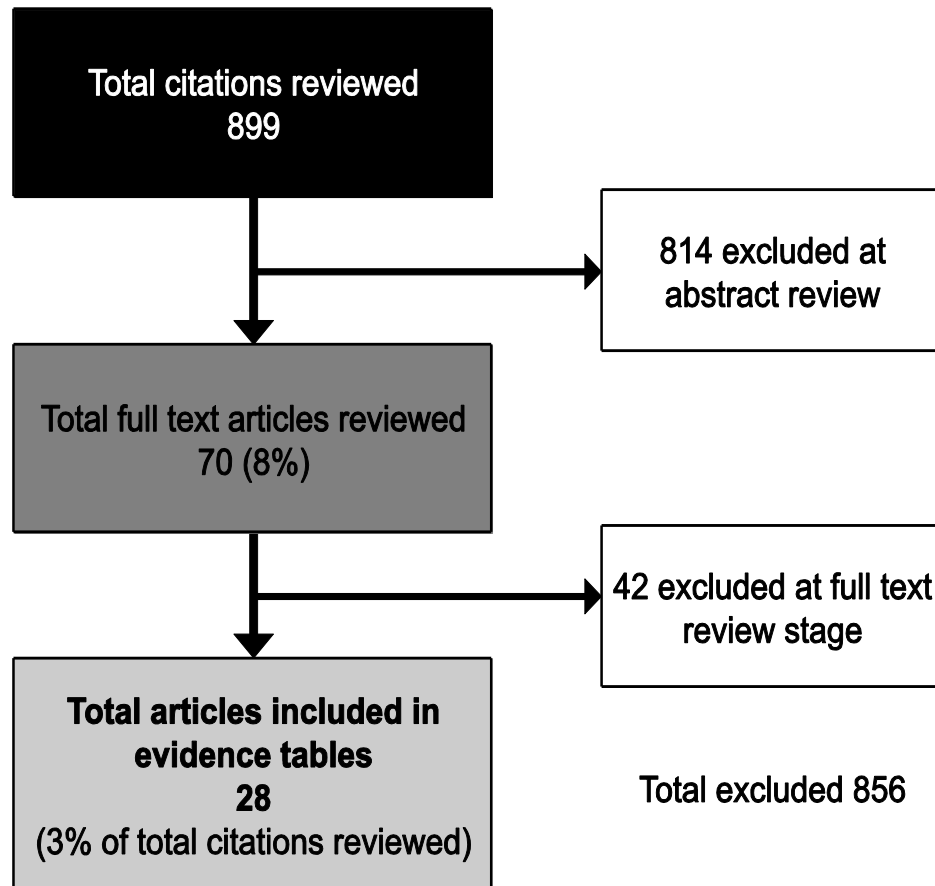


Figure S2. Forest plot summarizing randomised trials of the symptomatic effect of oxygen on breathlessness in people with chronic obstructive pulmonary disease (COPD) who do not qualify for long-term oxygen therapy (LTOT) dichotomised by baseline mean partial pressure of oxygen.

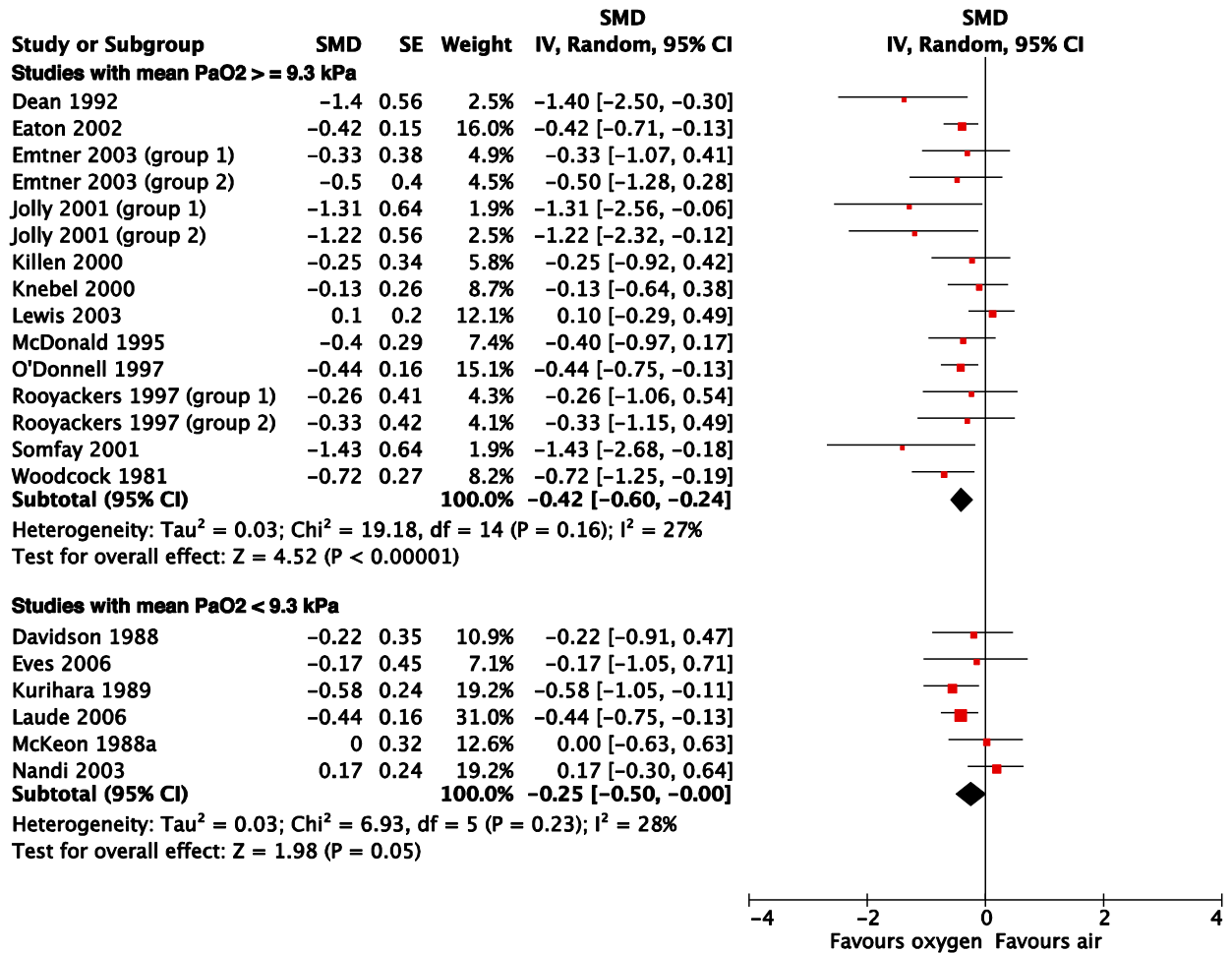


Figure S3. Forest plot summarizing randomised trials of the symptomatic effect of oxygen on breathlessness in people with chronic obstructive pulmonary disease (COPD) who do not qualify for long-term oxygen therapy (LTOT) dichotomised by duration of oxygen administered.

