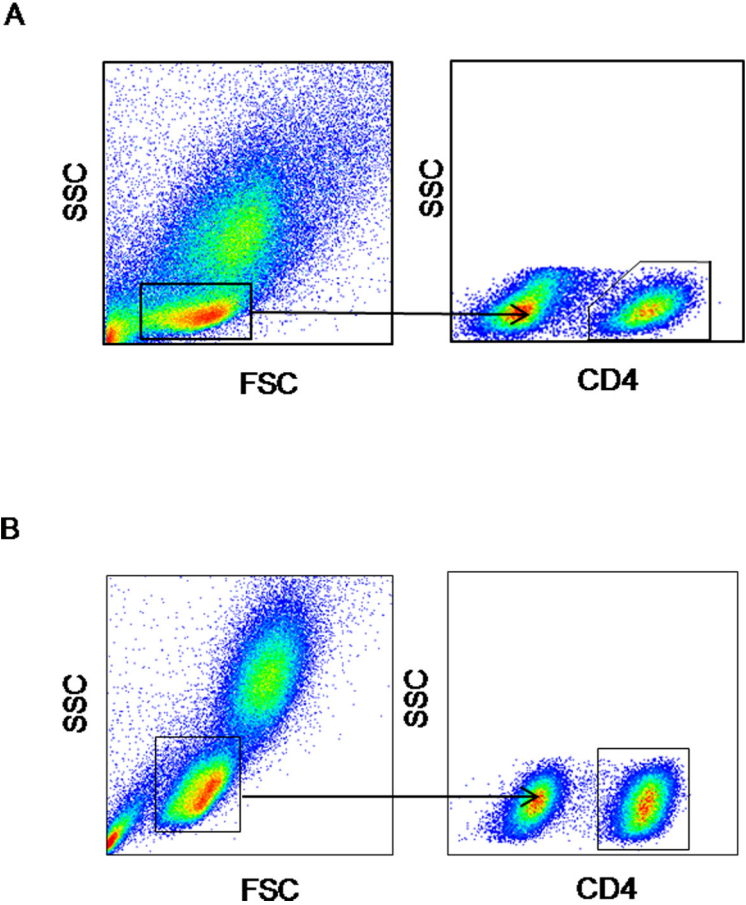


**Supplementary figure 1.** Representative plots of flow cytometry used in BAL (A) and PBMC (B) analysis.



**Supplementary figure 2.** The effect of corticosteroid on subpopulations of Foxp3<sup>+</sup> T cells in COPD patients. The cross-sectional analysis showed that no difference was found between patients receiving and not receiving inhaled corticosteroid in terms of three subpopulations of Tregs. Horizontal lines indicate median values.

