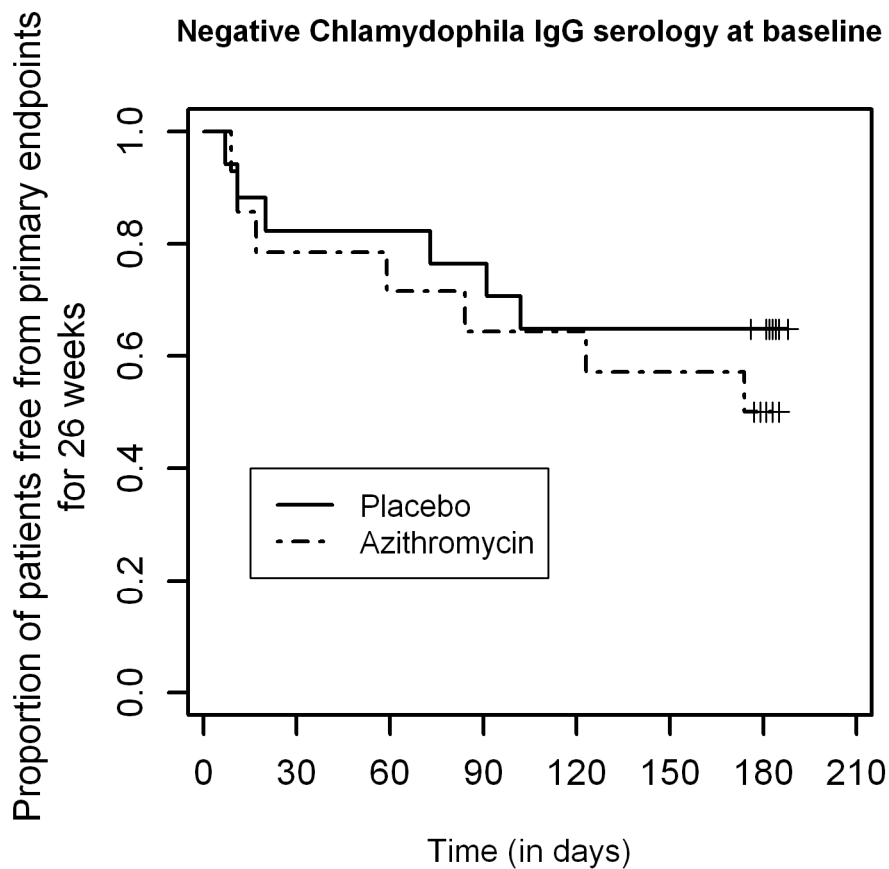


Supplemental Figure S2. Primary Endpoints According to Serology for *Chlamydomphila pneumoniae*.

Panel A shows the proportion of participants free from primary endpoints for 26 weeks, according to study group, in subjects with negative immunoglobulin G (IgG) to *C. pneumoniae* at baseline. Panel B shows the proportion of participants free from primary endpoints for 26 weeks, according to study group, in subjects with positive IgG to *C. pneumoniae* at baseline. A primary endpoint was defined as a severe asthma exacerbation requiring treatment with systemic corticosteroids, emergency room visit or hospitalisation¹⁷, and/or an acute lower respiratory tract infection requiring treatment with antibiotics.



Proportion of patients free from primary endpoints
for 26 weeks

Positive Chlamydomphila IgG serology at baseline

