

Childhood peak flow and the Oxford Transport Strategy

SJ MacNeill¹, F Goddard¹, R Pitman², S Tharme³ and P Cullinan¹

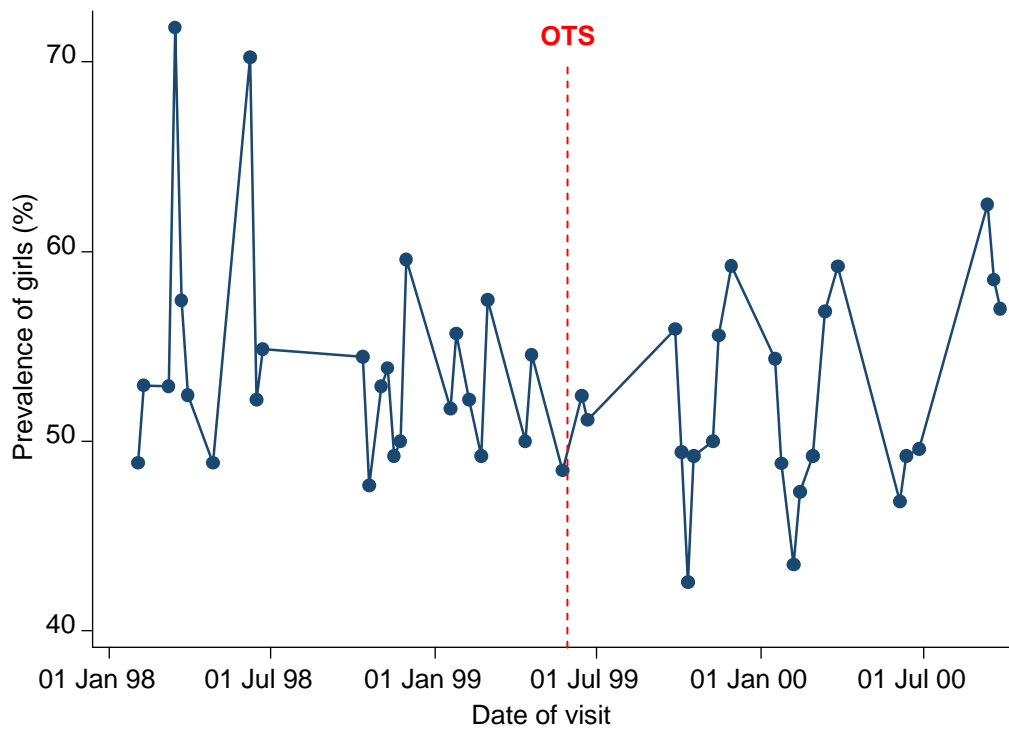
¹Department of Occupational and Environmental Medicine, Imperial College (NHLI) and Royal Brompton Hospital, 1B Manresa Road, London SW3 6LR

²Department of Environmental Health, Oxford City Council, 10 St Ebbe's St, Oxford, OX1 1PT

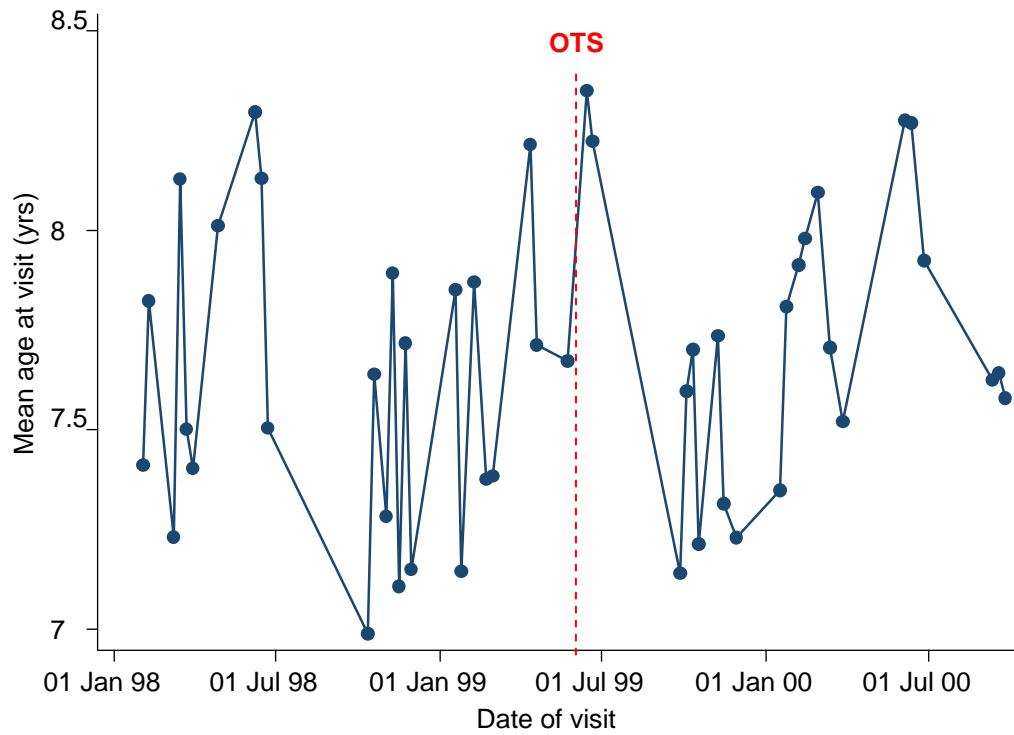
³Department of Environment and Economy, Oxford County Council, Speedwell House, Speedwell Street, Oxford, OX1 1NE

Online supplement

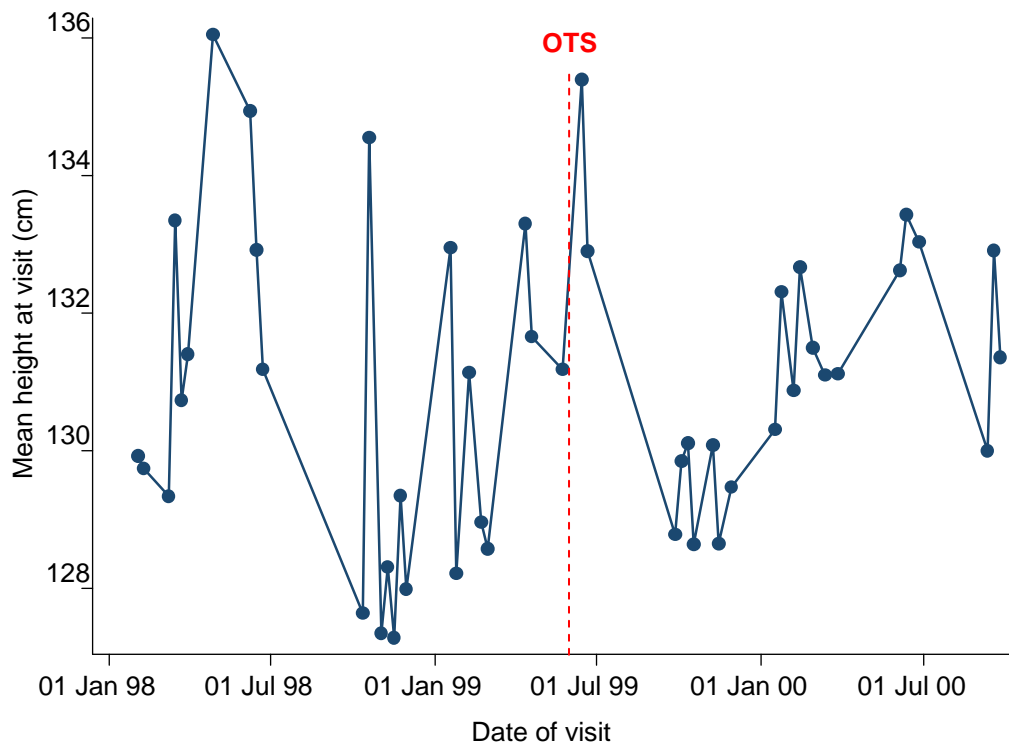
Supplement figure 2: Prevalence of girls at each school visit



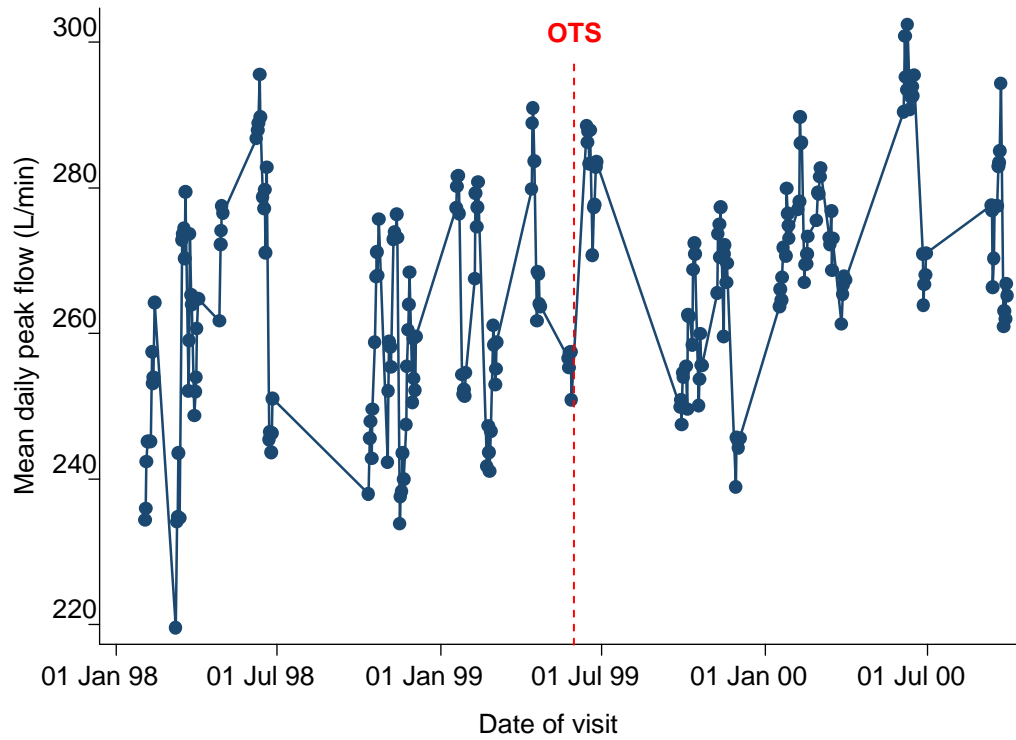
Supplement figure 3: Mean age at each school visit



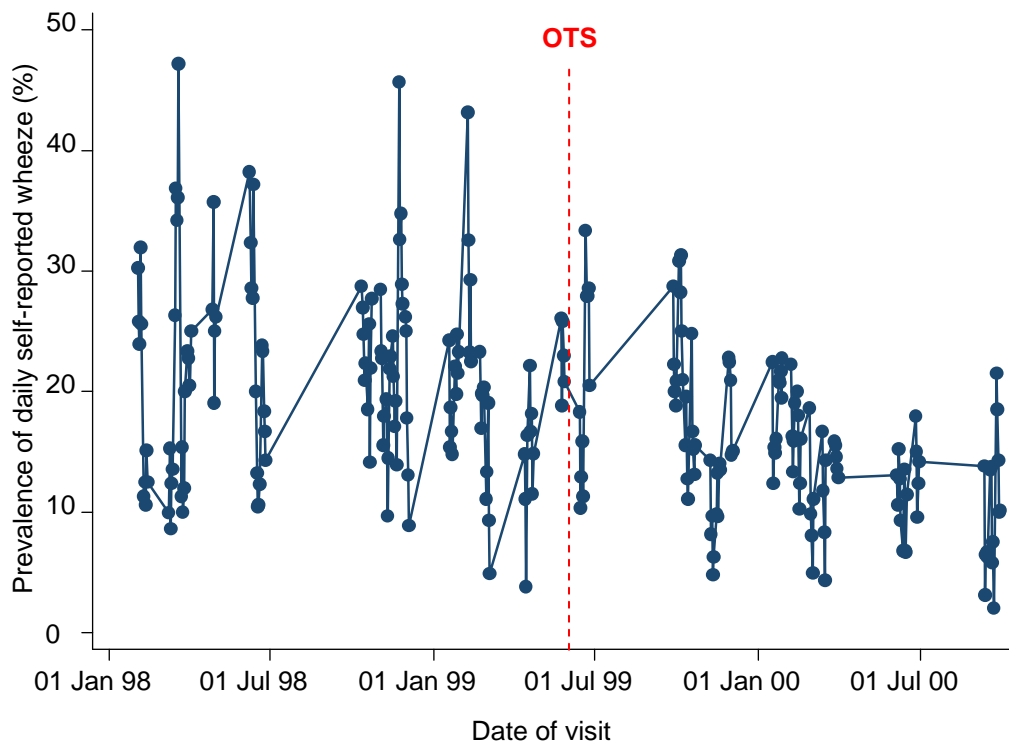
Supplement figure 4: Mean height at each school visit



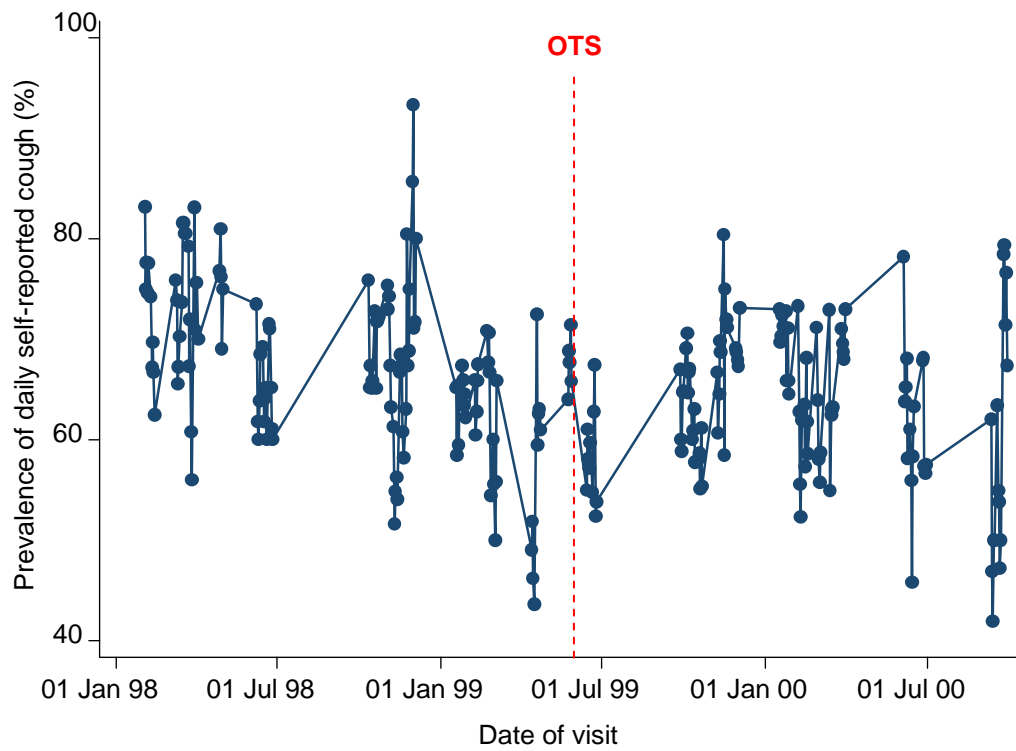
Supplement figure 5: Mean daily peak flows



Supplement figure 6: Prevalence of daily self-reported wheeze



Supplement figure 7: Prevalence of daily self-reported cough



Supplement figure 8: Prevalence of daily self-reported runny nose

