

Original research

Current smoking and COVID-19 risk: results from a population symptom app in over 2.4 million people

Nicholas S Hopkinson ¹, Niccolo Rossi ², Julia El-Sayed_Moustafa,²
Anthony A Laverty ³, Jennifer K Quint ⁴, Maxim Freidin,⁵ Alessia Visconti,²
Ben Murray,⁶ Marc Modat,⁶ Sebastien Ourselin,⁷ Kerrin Small,² Richard Davies ⁸,
Jonathan Wolf,⁸ Tim D Spector,² Claire J Steves,² Mario Falchi²

► Additional material is published online only. To view, please visit the journal online (<http://dx.doi.org/10.1136/thoraxjnl-2020-216422>).

For numbered affiliations see end of article.

Correspondence to

Dr Nicholas S Hopkinson, National Heart and Lung Institute, Imperial College London, London SW3 6NP, UK; n.hopkinson@ic.ac.uk

CJS and MF contributed equally.

NSH and NR are joint first authors.

Received 19 October 2020
Revised 7 November 2020
Accepted 22 November 2020



► <https://doi.org/10.1136/thoraxjnl-2020-215119>



© Author(s) (or their employer(s)) 2021. No commercial re-use. See rights and permissions. Published by BMJ.

To cite: Hopkinson NS, Rossi N, El-Sayed_Moustafa J, et al. *Thorax* Epub ahead of print: [please include Day Month Year]. doi:10.1136/thoraxjnl-2020-216422

ABSTRACT

Background The association between current tobacco smoking, the risk of developing symptomatic COVID-19 and the severity of illness is an important information gap.

Methods UK users of the Zoe COVID-19 Symptom Study app provided baseline data including demographics, anthropometrics, smoking status and medical conditions, and were asked to log their condition daily. Participants who reported that they did not feel physically normal were then asked by the app to complete a series of questions, including 14 potential COVID-19 symptoms and about hospital attendance. The main study outcome was the development of 'classic' symptoms of COVID-19 during the pandemic defined as fever, new persistent cough and breathlessness and their association with current smoking. The number of concurrent COVID-19 symptoms was used as a proxy for severity and the pattern of association between symptoms was also compared between smokers and non-smokers.

Results Between 24 March 2020 and 23 April 2020, data were available on 2 401 982 participants, mean (SD) age 43.6 (15.1) years, 63.3% female, overall smoking prevalence 11.0%. 834 437 (35%) participants reported being unwell and entered one or more symptoms. Current smokers were more likely to report symptoms suggesting a diagnosis of COVID-19; classic symptoms adjusted OR (95% CI) 1.14 (1.10 to 1.18); >5 symptoms 1.29 (1.26 to 1.31); >10 symptoms 1.50 (1.42 to 1.58). The pattern of association between reported symptoms did not vary between smokers and non-smokers.

Interpretation These data are consistent with people who smoke being at an increased risk of developing symptomatic COVID-19.

INTRODUCTION

Although in many people infection with SARS-CoV-2 is asymptomatic, some develop symptomatic COVID-19 and in some individuals there is progressive lung involvement with respiratory failure and widespread systemic consequences.¹⁻³ The risk of severe complications is higher in older people and those with long-term medical conditions including cardiovascular disease, diabetes and COPD.⁴⁻⁷

Key messages

What is the key question?

- Does current smoking increase individuals' risk of developing symptomatic COVID-19?

What is the bottom line?

- In this study of 2.4 million users entering data into the Zoe COVID-19 Symptom Study app in the month from 24 March 2020, smokers were more likely to report the 'classic triad' of symptoms suggesting COVID-19 (cough, fever, breathlessness) and also more likely to report more symptoms, a surrogate for disease severity.

Why read on?

- These population symptom data support the contention that smoking increases individual risk from COVID-19.
- The pattern of associations between symptoms reported did not vary between smokers and non-smokers, suggesting that the findings cannot be explained by pre-existing smoking-related symptoms.
- Support to help people to quit smoking should therefore form part of efforts to deal with the pandemic.

Tobacco smoking is a significant risk factor for both viral and bacterial infections of the respiratory system,^{8,9} with smokers five times as likely to develop influenza and twice as likely to have pneumonia.¹⁰ It may therefore be an important factor worsening the impact of SARS-CoV-2. There is evidence from case series that smoking is associated with more severe disease, a greater risk of intensive care unit admission and excess mortality in people with COVID-19 admitted to hospital.^{4,11-14} However, some reports have suggested that although smoking-related disease is common in patients with COVID-19, current smoking rates in hospitalised patients are lower than would be expected from population smoking prevalence. While some studies have looked specifically at current smoking,¹²⁻¹⁴ others combined current and ex-smokers,^{4,11} and smoking prevalence in these samples suggest data may have been incomplete. It is important to be able to distinguish the effect of current smoking from the impact

on long-term conditions caused by former smoking, in order to guide the appropriate prioritisation of smoking cessation as part of the global response to COVID-19.

In order to establish the impact of current smoking more accurately, we analysed data from a population of COVID-19 symptom reporting app, developed by Zoe Global in collaboration with King's College London. We hypothesised that current smokers would be at increased risk of developing self-reported symptoms suggesting that they had COVID-19 and would experience more symptoms reflecting a greater illness burden.

METHODS

Data and analysis

Adult members of the public were invited to download the Zoe COVID-19 Symptom Study app after its launch on radio, TV and via social media. On first use, the app records users' self-reported location, age and core health risk factors, including height and weight, if they smoked with options; yes, not currently, never. Participants were asked about common disease (eg, diabetes, heart disease, lung disease) status, some medication use as well as whether they thought that they already had COVID.¹⁵

With continued use, participants were asked to provide daily updates on whether they have been tested for SARS-CoV-2 and the results of these tests as well as if they 'feel physically normal'. If they reported that they did not, they were then invited by the app to record the presence of 14 symptoms that have been shown to be associated with COVID-19¹⁵ (ie, abdominal pain, chest pain, delirium, diarrhoea, fatigue, fever, headache, hoarse voice, loss of smell, persistent cough, shortness of breath, skipped meals, sore throat, unusual muscle pains) and whether they had attended hospital. Fatigue and shortness of breath were graded by symptom severity, ranging from mild to severe.

Study population

The study population for this analysis comprised individuals resident in the UK who were registered with the app and entered data between 24 March and 23 April 2020. We collected all symptoms declared by each participant during the period which they engaged with the app. More details about user engagement and the overall distribution of reported symptoms are shown in online supplemental figures E1-2. While the response option for the majority of symptoms was yes/no, fatigue and shortness of breath were considered present if any level of severity was reported. Where a possible symptom response was missing it was treated as absent. Questions about race and ethnic origin were only included for people registering with the app after 17 April 2020,¹⁶ so this information was available only for a small subset (12%) of individuals in the dataset.

For this analysis, people reporting their age as outside the range 16–90 years or their body mass index (BMI) (kg/m^2) outside 15–55 years were excluded ($n=310\ 462$). We further removed 50 187 individuals due to inconsistent assessments, where users (i) reported being tested both positive and negative for SARS-CoV-2 on the same day, (ii) logged a body temperature outside the range of 35°C – 43°C or (iii) reported feeling unwell but entered no symptoms). We also excluded women who declared themselves to be pregnant ($n=8680$).

Statistical analysis

The main study outcome was the development of 'classic' symptoms of COVID-19 during the pandemic defined as fever, new persistent cough and breathlessness and their association with current smoking. The number of concurrent COVID-19

symptoms was used as a proxy for severity and the pattern of association between symptoms was also compared between smokers and non-smokers. We first investigated associations between smoking status and individual COVID-19 symptoms using logistic regression, including age, sex and BMI as covariates. Statistical analyses were carried out using R (V.3.6.0). The Bonferroni-adjusted threshold for statistical significance was calculated by dividing a conventional alpha value of 0.05 by the number of tested groups and the effective number of independent symptoms, which were estimated based on their pairwise polychoric correlation coefficients (*polycor* R package, V.0.7-10), using the method by Li and Ji.¹⁷ The resulting p value threshold was $0.05/4/11=1.14\times 10^{-3}$. Association p values below this threshold were considered to be statistically significant.

Smoking association with COVID-19 symptom burden in standard users

We further explored the effect of smoking on COVID-19 severity among standard users (ie, subjects neither tested for SARS-CoV-2 nor self-reporting prior suspected COVID-19 infection at the time of registration) by examining association between smoking status and the development of a greater symptom burden. We took the number of reported COVID-19 symptoms as a proxy for disease severity, but did not attempt to weight different symptoms. Tested logistic regression models first addressed the impact of current smoking on the primary end point defined as the presence of all the classic triad of symptoms (ie, fever, persistent cough and shortness of breath consistent with COVID-19 caseness). In addition, we investigated the presence of (i) >5 symptoms and (ii) >10 symptoms taking these as arbitrary categories of increasing disease burden to the individual. Age, sex and BMI were included as covariates.

Ethnicity was not included in these analyses, due to its limited availability in the dataset. The small number of subjects with missing smoking status ($n=1313$ (0.05%)) were considered non-smokers. Sensitivity analyses using the same model but including ethnicity as a covariate and including missing smoking status as a category in its own right are reported in online supplemental tables E1-2. In both analyses, the ORs resulting from the sensitivity analysis were consistent with those from the primary analysis, thus suggesting that our associations are valid across different ethnicities and that treating subjects with missing smoking status as non-smokers does not affect the association outcome.

Smoking and SARS-CoV-2 PCR result in tested subset

We also assessed the association between smoking status and a positive SARS-CoV-2 PCR test outcome using logistic regression, including age, sex and BMI as covariates. As a sensitivity analysis, we controlled for confounding effects of healthcare working status on smoking association with SARS-CoV-2 positivity by testing the identical multivariate regression model including healthcare worker status as a covariate.

Smoking association with hospital attendance

Users of the app who reported that they had symptoms were asked to report and then to update their location using the options (i) at home not been to hospital for suspected COVID-19 symptoms, (ii) attending hospital with suspected COVID-19 symptoms, (iii) back from hospital I'd like to tell you about my treatment, (iv) back from hospital I've already told you about my treatment. We treated hospital attendance as an additional proxy for COVID-19 symptom severity, and therefore tested

by logistic regression its association with smoking in individuals testing positive for SARS-CoV-2. Age, sex, BMI and presence of comorbidities (ie, diabetes, lung disease, kidney disease, cancer and heart disease) or comorbidity-related treatments (ie, blood pressure medications and immunosuppressants) were included as covariates in the model.

RESULTS

Overall, 2 401 982 UK residents, a majority female (63.3%), entered data via the app between 24 March 2020 and 23 April 2020 and were eligible for analysis. Median (IQR) per-user number of login days was 5 (2–14), and median number of days between first and last engagement with the app was 14 (1–26) (online supplemental figure E1). During this period, 834 437

individuals (35%) reported that they ‘did not feel physically normal’ and entered at least one COVID-19-related symptom. We classified the 2 401 982 participants into four groups (table 1; figure 1): (i) tested SARS-CoV-2 positive (SC2P; n=7123); (ii) tested SARS-CoV-2 negative (SC2N; n=16 759); (iii) subjects self-reporting COVID-19 (SC2S; n=157 406) who believed, based on symptoms, that they already had COVID-19 at the time of registration; (iv) the remaining 2 221 088 were defined as ‘standard users’. The distribution of symptoms in these four categories is presented in figure 2.

Individuals reporting hospital attendance reported experiencing a higher number of co-occurring symptoms than those who did not attend hospital (effect size (ES)=2.53; SE=0.02; $p<2.22\times 10^{-16}$).

Table 1 Characteristics of study subjects by category

	All users	Self-reported COVID-19	SARS-CoV-2 tested			P value	Standard users
			All	Negative	Positive		
Demographics							
N (%)	2 401 982	157 406 (6.5)	26 918 (1.1)	16 759 (0.7)	7123 (0.3)		2 221 088 (92.4)
Sex (% F)	63.3	64.39	68.81	68.41	67.82	0.401	63.16
Age	43.63±15.01 (32–55)	42.5±13.26 (32–52)	42.35±13.23 (32–52)	43.2±13.51 (33–53)	41.16±12.69 (31–50)	<2.2×10 ⁻¹⁶	43.73±15.14 (32–55)
BMI	26.47±5.48 (22.67–29.1)	26.85±5.71 (22.83–29.65)	26.91±5.78 (22.78–29.8)	26.71±5.65 (22.71–29.53)	27.26±5.94 (23.05–30.13)	9.04×10 ⁻⁷	26.44±5.46 (22.67–29.05)
Healthcare worker (%)	83 120 (3.46)	10 533 (6.69)	5385 (20.01)	2391 (14.27)	2218 (31.14)	<2.2×10 ⁻¹⁶	68 188 (3.07)
Ethnicity (%)							
Asian	6014 (2.1)	395 (3.02)	120 (4.72)	51 (3.63)	50 (6.39)		5525 (2.03)
Black	1700 (0.59)	123 (0.94)	27 (1.06)	15 (1.07)	10 (1.28)		1555 (0.57)
Chinese	1040 (0.36)	52 (0.4)	16 (0.63)	11 (0.78)	4 (0.51)		975 (0.36)
Middle East	1219 (0.43)	81 (0.62)	16 (0.63)	6 (0.43)	7 (0.89)		1128 (0.42)
Mixed	4260 (1.49)	272 (2.08)	28 (1.10)	14 (1.00)	5 (0.64)		3969 (1.46)
White	272 537 (95.04)	12 142 (92.94)	2335 (91.86)	1309 (93.10)	707 (90.29)		258 508 (95.16)
N/A	2 115 212 (88.06)	144 341 (91.70)	24 376 (90.56)	15 353 (91.61)	6 340 (89.01)		1 949 428 (87.77)
Smoking prevalence (% all; % F; % M)*							
Overall	240 873; 146 010; 94 697 (10.96; 10.35; 12.05)	18 845; 11 776; 7048 (13.79; 13.26; 14.76)	2182; 1502; 678 (8.93; 8.87; 9.08)	1418; 944; 473 (9.26; 8.92; 10.01)	472; 333; 138 (7.40; 7.67; 6.79)	1.10×10 ⁻⁵	220 135; 132 927; 87 064 (10.79; 10.17; 11.90)
Age (years)							
16–24	30 510; 20 167; 10 313 (13.79; 13.02; 15.55)	2334; 1523; 805 (19.00; 17.86; 21.5)	253; 177; 75 (14.93; 14.38; 16.27)	153; 101; 52 (15.07; 14.13; 17.39)	61; 46; 14 (13.26; 13.77; 11.29)		27 952; 18 485; 9443 (13.47; 12.73; 15.20)
25–44	135 199; 82 509; 52 594 (13.11; 12.07; 15.14)	11 093; 6 848; 4233 (16.13; 15.21; 17.85)	1288; 906; 381 (9.95; 9.78; 10.38)	811; 548; 262 (10.38; 9.82; 11.76)	302; 222; 80 (8.54; 8.92; 7.68)		122 980; 74 865; 48 032 (12.93; 11.88; 14.99)
45–64	66 741; 39 238; 27 468 (8.96; 8.46; 9.79)	5135; 3 253; 1879 (10.48; 10.32; 10.76)	591; 396; 195 (6.88; 6.85; 6.95)	413; 274; 139 (7.40; 7.29; 7.66)	104; 64; 40 (4.73; 4.47; 5.21)		61 110; 35 654; 25 424 (8.87; 8.34; 9.75)
>65	8423; 4096; 4322 (4.21; 3.78; 4.71)	283; 152; 131 (4.27; 4.02; 4.60)	50; 23; 27 (4.16; 3.44; 5.07)	41; 21; 20 (4.48; 3.97; 5.18)	5; 1; 4 (2.72; 1.18; 4.04)		8093; 3923; 4165 (4.21; 3.78; 4.71)
Comorbidities (%)							
Diabetes	2.84	2.5	2.95	2.76	3.26		2.86
Heart disease	2.03	1.68	2.11	2.33	1.69		2.06
Lung disease	12.2	13.38	14.69	15.01	13.38		12.09
Kidney disease	0.59	0.57	0.9	0.95	0.83		0.59
Cancer	1.21	0.67	1.75	2.29	0.94		1.26
Hospital attendance							
N (%)	12 093 (1.45)	2746 (2.84)	2753 (14.39)	1250 (12.16)	1148 (18.35)	<2.2×10 ⁻¹⁶	7208 (1.00)

*Smoking prevalence in the UK (adult smoking habits in the UK: 2018, Office for National Statistics). Overall: 14.7% (16.5% of men; 13% of women). By age group: 18–24: 16.8%; 25–34: 19.2%; 35–44: 16.4%; 45–54: 16.8%; 55–64: 14.5%; ≥65: 7.9. Age and BMI are given as mean±SD and first, third IQR (in brackets). Standard users refers to individuals who did not believe that they already had COVID-19 when registering with the app and had not been tested for SARS-CoV-2. Significant differences in study variables between tested positive and tested negative subjects are shown (P). Categorical variables (ie, gender, healthcare worker and smoking) were compared using Pearson's χ^2 test, while age was compared using Wilcoxon's test. Association of p values with BMI is from linear regression adjusting for age and sex. The ‘self-reported COVID-19’ group includes 1295 and 1767 individuals who reported having tested positive and negative for SARS-CoV-2, respectively. BMI, body mass index.

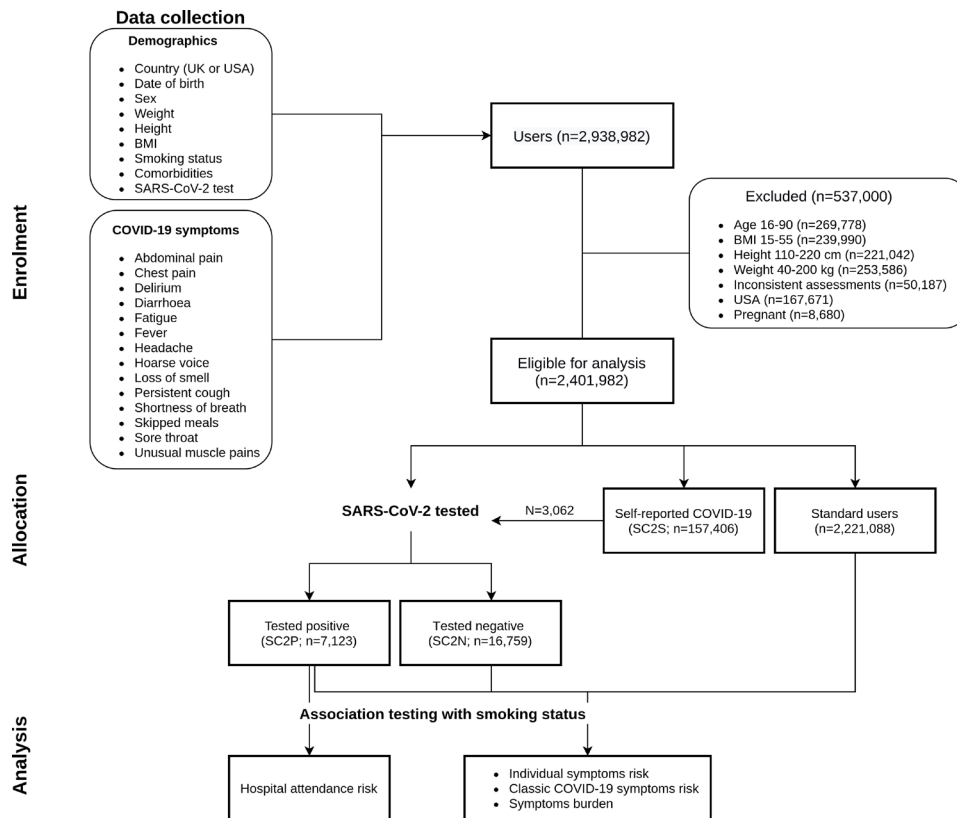


Figure 1 Flow diagram of the progress through phases of the analysis. BMI, body mass index; SC2N, SARS-CoV-2 negative; SC2P, SARS-CoV-2 positive; SC2S, self-reporting COVID-19.

Association of smoking with symptoms

Among standard users, current smokers were more likely to develop the classic triad of symptoms suggesting a diagnosis of COVID-19 (ie, fever, persistent cough and shortness of breath; OR (95% CI)=1.14 (1.10 to 1.18); $p=5.81 \times 10^{-13}$) and to meet a higher threshold of symptom burden, than non-smokers (>5 symptoms OR=1.29 (1.26 to 1.31); $p=8.00 \times 10^{-187}$; >10 symptoms OR=1.50 (1.42 to 1.58); $p=3.46 \times 10^{-48}$) (figure 3).

Smoking was associated with increased overall COVID-19 symptom burden in all categories (standard users $\beta=2.93$, SE=0.07, $p<2.22 \times 10^{-16}$; SC2S $\beta=3.02$, SE=0.21,

$p<2.22 \times 10^{-16}$; SC2P $\beta=3.28$, SE=1.10, $p=2.79 \times 10^{-3}$; SC2N $\beta=1.95$, SE=0.78, $p=1.22 \times 10^{-2}$; figure 4). Smoking was also associated with higher symptom burden in SC2S and, more importantly, SC2P (OR (95% CI) of presenting with >10 symptoms 1.33 (1.22 to 1.45); $p=1.91 \times 10^{-10}$ and 1.42 (1.09 to 1.83); $p=7.13 \times 10^{-3}$, respectively).

Although smokers had more symptoms than non-smokers, we did not observe any specific pattern of co-occurring symptoms distinguishing smokers from non-smokers, with symptom correlation matrices showing significant intercorrelation in all four user categories (lowest Mantel’s test $r^2=0.54$; $p=0.001$;

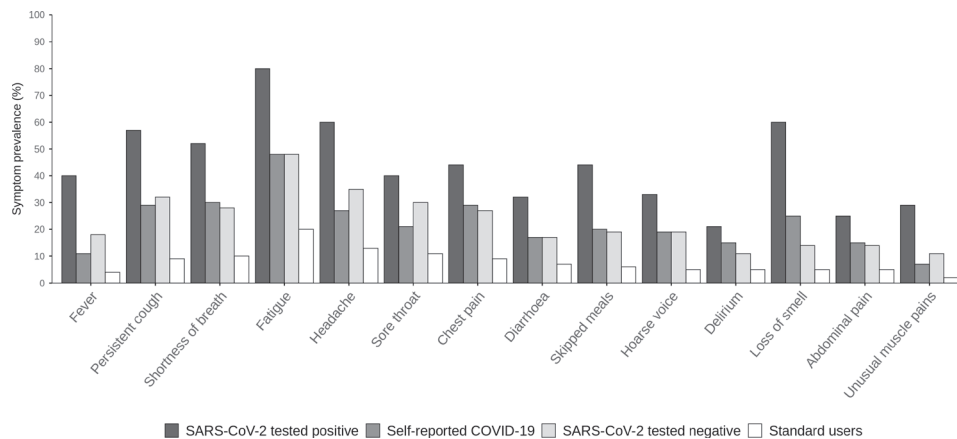


Figure 2 COVID-19 symptom distribution. Bar plot showing the proportion of individuals reporting COVID-19 symptoms within user categories. All symptoms except delirium and sore throat were more frequently observed among subjects who reported testing positive for SARS-CoV-2 (χ^2 $p<1.27 \times 10^{-6}$). The ‘self-reported COVID-19’ group includes 1295 and 1767 individuals who reported having tested positive and negative for SARS-CoV-2, respectively.

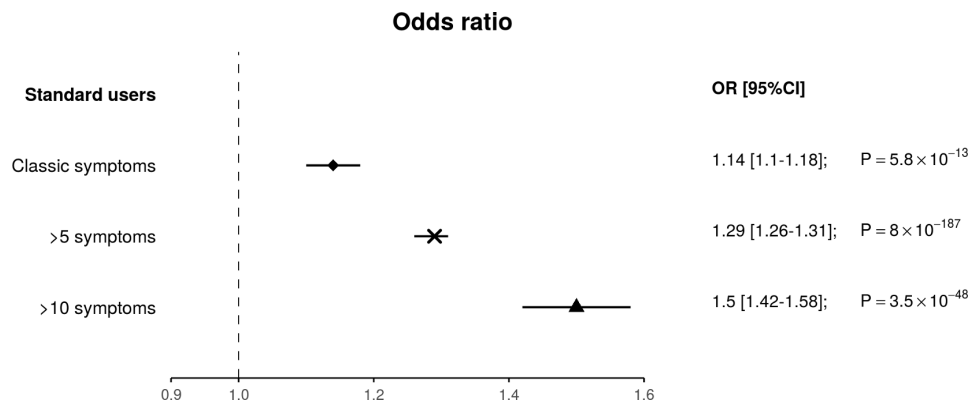


Figure 3 Effect of current smoking on risk of presenting with COVID-19 symptoms. The plot shows the OR (95% CI) for smokers from the standard users category of presenting with COVID-19 classic symptoms (ie, all three of cough, fever and breathlessness) or a higher symptom burden (ie, >5 or >10 symptoms).

online supplemental figure E5). Smoking was strongly associated with having most COVID-19 symptoms among standard users and SC2S (table 2).

Healthcare workers were defined as those who responded positively that they worked in a hospital, with the elderly or in a community care setting. The association between smoking and increased symptom burden remained significant in all groups but SC2N when healthcare workers were excluded from the analysis (standard users ES=2.96, SE=0.07, $p < 2.22 \times 10^{-16}$; SC2S ES=2.97, SE=0.22, $p < 2.22 \times 10^{-16}$; SC2P ES=3.96, SE=1.34, $p = 3.05 \times 10^{-3}$; SC2N ES=1.43, SE=0.85, $p = 0.09$; online supplemental figure E6).

Impact of smoking in the SARS-CoV-2 tested subgroup

The group who reported that they had undergone testing at this relatively early stage in the pandemic (n=26,918 10.1% of app users) differed in a number of ways from the general study population and testing was non-random so their data cannot be used to make inferences about the risk to the general population (table 1). Twenty per cent of those tested were healthcare workers (HCW) compared with 3.4% in the whole study population and 31% of those testing positive were HCW. Rates of comorbidities were higher in tested individuals compared with

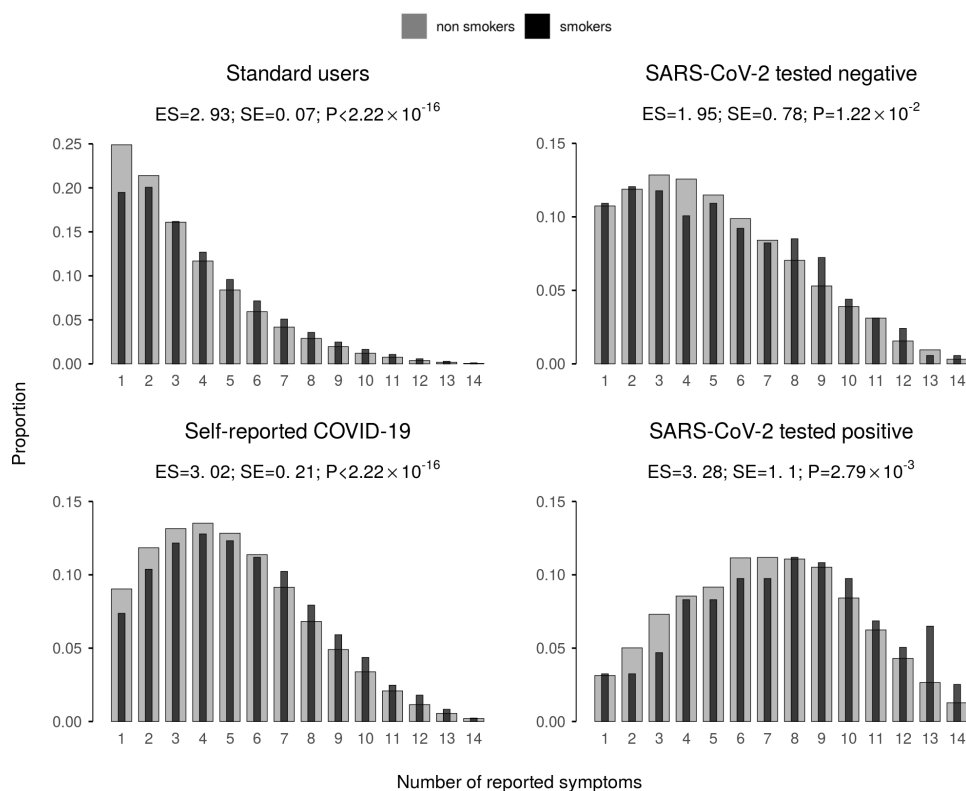


Figure 4 Effect of current smoking on COVID-19 symptom burden. For each user category, the bar plot shows the relative abundance of individuals by total number of COVID-19 symptoms reported, among non-smokers (grey) and smokers (black). We report the regression effect size, along with its SE and p value when testing the association between smoking status and COVID-19 symptom burden. Current smoking was associated with increased overall symptom burden in all categories. NA, not available.

Table 2 OR for individual symptoms in current smokers versus non-smokers

N (non-smokers/smokers)	Standard users 2 221 088 (220 135/1 819 505)		COVID-19 self-reported 157 406 (18 845/117 848)		SARS-CoV-2 tested – 16 759 (1418/13 902)		SARS-CoV-2 tested + 7123 (472/5908)	
	OR (95% CI)	P value	OR (95% CI)	P value	OR (95% CI)	P value	OR (95% CI)	P value
Abdominal pain	1.35 (1.33 to 1.38)	8.35×10 ⁻¹⁹⁸	1.43 (1.37 to 1.50)	7.21×10 ⁻⁵⁷	1.33 (1.13 to 1.56)	6.94×10 ⁻⁴	1.43 (1.15 to 1.77)	1.07×10 ⁻³
Chest pain	1.16 (1.14 to 1.18)	1.42×10 ⁻⁶³	1.10 (1.06 to 1.14)	4.04×10 ⁻⁶	1.06 (0.92 to 1.23)	4.06×10 ⁻¹	1.31 (1.07 to 1.62)	1.08×10 ⁻²
Delirium	1.22 (1.20 to 1.25)	2.12×10 ⁻⁹³	1.26 (1.20 to 1.31)	1.08×10 ⁻²³	1.60 (1.34 to 1.89)	8.09×10 ⁻⁸	1.83 (1.47 to 2.27)	4.38×10 ⁻⁸
Diarrhoea	1.31 (1.29 to 1.33)	3.94×10 ⁻²¹⁰	1.28 (1.23 to 1.34)	5.59×10 ⁻²⁹	1.31 (1.12 to 1.53)	5.55×10 ⁻⁴	1.14 (0.92 to 1.40)	2.34×10 ⁻¹
Fatigue	1.06 (1.05 to 1.08)	1.75×10 ⁻¹⁵	0.94 (0.90 to 0.99)	1.40×10 ⁻²	1.00 (0.84 to 1.18)	9.55×10 ⁻¹	0.78 (0.57 to 1.10)	1.46×10 ⁻¹
Fever	1.01 (0.98 to 1.03)	6.37×10 ⁻¹	1.01 (0.96 to 1.06)	8.42×10 ⁻¹	0.87 (0.74 to 1.02)	8.79×10 ⁻²	0.86 (0.70 to 1.06)	1.54×10 ⁻¹
Headache	1.10 (1.08 to 1.12)	1.91×10 ⁻²⁵	1.30 (1.24 to 1.36)	2.77×10 ⁻²⁵	1.03 (0.87 to 1.22)	7.23×10 ⁻¹	1.08 (0.83 to 1.41)	5.89×10 ⁻¹
Hoarse voice	1.06 (1.04 to 1.08)	8.38×10 ⁻⁸	1.06 (1.01 to 1.10)	1.04×10 ⁻²	0.95 (0.81 to 1.12)	5.48×10 ⁻¹	1.19 (0.97 to 1.46)	1.02×10 ⁻¹
Anosmia	1.07 (1.05 to 1.09)	6.98×10 ⁻¹¹	0.88 (0.85 to 0.92)	4.82×10 ⁻⁹	1.18 (0.99 to 1.39)	5.55×10 ⁻²	0.93 (0.74 to 1.17)	5.32×10 ⁻¹
Persistent cough	1.18 (1.16 to 1.20)	8.28×10 ⁻⁹⁰	0.99 (0.95 to 1.03)	5.31×10 ⁻¹	0.88 (0.76 to 1.01)	7.27×10 ⁻²	0.73 (0.59 to 0.90)	2.96×10 ⁻³
Shortness of breath	1.16 (1.14 to 1.18)	3.34×10 ⁻⁷¹	1.09 (1.05 to 1.14)	1.40×10 ⁻⁵	1.11 (0.96 to 1.29)	1.40×10 ⁻¹	1.35 (1.09 to 1.68)	6.53×10 ⁻³
Skipped meals	1.76 (1.73 to 1.79)	p<2.23e ⁻³⁰⁸	1.52 (1.46 to 1.59)	4.78×10 ⁻⁸⁸	1.46 (1.26 to 1.70)	6.92×10 ⁻⁷	1.31 (1.06 to 1.61)	1.15×10 ⁻²
Sore throat	0.93 (0.91 to 0.95)	2.04×10 ⁻¹⁴	1.17 (1.12 to 1.23)	2.00×10 ⁻¹¹	0.90 (0.77 to 1.06)	2.12×10 ⁻¹	1.32 (1.06 to 1.65)	1.30×10 ⁻²
Unusual muscle pains	1.47 (1.43 to 1.52)	2.41×10 ⁻¹⁵¹	1.46 (1.37 to 1.55)	8.90×10 ⁻³⁰	1.24 (1.02 to 1.50)	3.18×10 ⁻²	1.19 (0.94 to 1.51)	1.40×10 ⁻¹

For each test group, the table reports the OR (95% CI) and p value of the association between smoking status and individual COVID-19 symptoms, adjusted for age, sex and BMI. An OR >1 reflects an increased likelihood of this symptom being reported in current smokers. Associations passing Bonferroni correction for multiple testing ($p < 1.14 \times 10^{-3}$) are highlighted in bold.

the general population. Smoking rates among tested individuals were lower compared with all users of the app (8.9% vs 11.0%).

The average number of symptoms reported by subjects who reported being tested positive for SARS-CoV-2 (mean (IQR)=6.16 (4–9)), was markedly higher than SC2N users (3.22 (2–6); Wilcoxon's test $p < 2.22 \times 10^{-16}$) and, more importantly, than standard users (1.12 (0–1); $p < 2.22 \times 10^{-16}$; online supplemental figure E3). The incidence of all COVID-19-related symptoms, with the exception of delirium and sore throat, was higher in the SC2P group as compared with the other categories (χ^2 test $p < 1.27 \times 10^{-6}$; figure 2). Of note, among subjects who tested positive for SARS-CoV-2, current smokers were more likely to develop delirium (OR (95% CI)=1.83 (1.47 to 2.27); $p = 4.38 \times 10^{-8}$) and abdominal pain (OR=1.43 (1.15 to 1.77); $p = 1.07 \times 10^{-3}$), compared with non-smokers.

Smoking rates were lower in those who had tested positive for SARS-CoV-2 compared with those testing negative (7.4% vs 9.3%) as were rates of cancer, heart disease and lung disease. In the tested subpopulation, smoking was negatively associated with the risk of having a positive PCR for SARS-CoV-2 infection (OR (95% CI) 0.73 (0.65 to 0.81); $p = 9.49 \times 10^{-9}$). This association remained significant when accounting for healthcare working status by including it as covariate in the model (OR (95% CI)=0.70 (0.63–0.79); $p = 6.82 \times 10^{-10}$), suggesting that the association between smoking status and SARS-CoV-2 test outcome is not confounded by the higher number of healthcare workers being tested for SARS-CoV-2 nor the lower smoking prevalence among healthcare workers.

Despite this apparently protective effect of smoking in the tested group, the symptom burden was higher in smokers who tested positive for SARS-CoV-2 as compared with non-smokers. Smoking was associated with higher symptom burden in those testing positive (OR (95% CI) of presenting with >10 symptoms 1.42 (1.09 to 1.83); $p = 7.13 \times 10^{-3}$). In addition, current smokers who tested positive had a higher risk of attending hospital due to COVID-19 compared with non-smokers (OR

2.11 (1.41 to 3.11); $p = 1.99 \times 10^{-4}$). This association remained significant when participants reporting the presence of comorbidities were removed from the analysis (OR 1.87 (1.15 to 2.95); $p = 9.02 \times 10^{-3}$) or when accounting for healthcare working status by including it as covariate in the model (OR 2.08 (1.37 to 3.12); $p = 4.76 \times 10^{-3}$).

DISCUSSION

The main finding from this large prospective population cohort is that current smoking was associated with a substantially increased risk of developing self-reported symptoms suggestive of COVID-19, as well as a greater symptom burden, indicating an impact of smoking on disease severity. Among those who reported being tested positive for SARS-CoV-2, smokers had a higher symptom burden and were more likely to need to attend hospital, compared with non-smokers.

Significance of findings

The COVID-19 pandemic continues to threaten to overwhelm healthcare systems and measures to contain it impose significant burdens on populations.^{18 19} There is a need for strategies to mitigate this, which include preventing or delaying transmission of the virus to 'flatten the curve', as well as any measures that might reduce the severity of the condition. In addition, steps should be taken to increase health system capacity and reduce health system demand from other sources. The present data suggest that smoking cessation should be considered as an element in strategies to address COVID-19, as smoking increases both the likelihood of symptomatic disease defined according to the presence of 'classic' symptoms of fever, cough and breathlessness and the severity of disease, defined based on the number of symptoms. Combined with this, a reduction in population smoking rates is likely to reduce the health system burden from other conditions that require hospitalisation such as acute vascular events and exacerbations of lung disease¹⁰ as well as improving resilience by reducing overall sickness absence among key workers.²⁰

It has been reported that smoking is associated with upregulation of ACE2,^{21–23} the receptor for the SARS-CoV-2 virus²⁴ in the lung, although a recent meta-analysis suggests divergent effects with upregulation in epithelial cells and downregulation in alveolar type 2 cells.²⁵ The situation is further complicated by the possibility that internalisation of ACE2 due to viral infection leads to unopposed ACE inhibitor activity and high angiotensin II levels, contributing to endothelial damage and the coagulopathy and microthrombosis seen in severe COVID-19.^{1,2} Smoking itself causes vascular endothelial damage,²⁶ a prominent feature in the pathophysiology of severe COVID-19.

In addition to an increase in individual susceptibility to developing COVID-19 following viral infection, smoking might also be expected to increase the risk of infection because of the repeated hand to mouth movements that smoking entails. The increase in severity that we found associated with smoking suggests that the whole curve of disease is shifted as opposed to just the chance of infection. Importantly, although the number and degree of symptoms was higher in smokers the pattern of symptoms did not differ importantly, indicating that the phenomenon that we observed was not caused by the presence of symptoms related directly to smoking itself.

Data were also available for a limited number of individuals who reported the results of swab tests performed to identify the presence of SARS-CoV-2. Only 1% of the study population had undergone testing and this group was heavily selected because of testing policies which focused on healthcare workers and others interacting with healthcare, in particular, patients tested who may have been attending healthcare settings for other non-COVID-19-related conditions. As numerous health conditions are smoking-related, this would tend to increase the exposure of smokers without COVID-19 to testing. As a consequence, extrapolation from this subgroup to population risk is inappropriate. Smoking prevalence was lower in the tested group than in the whole study cohort, 8.9% vs 11.0%, both values substantially below the UK population average and smoking prevalence was lower in those testing positive than those testing negative (7.4% vs 9.3%). This raises several possibilities. First, it may be that smoking does reduce susceptibility to infection with SARS-CoV-2, although the likelihood of developing symptoms and severity of disease in current smokers remains higher, according both to the whole population (2.4 million app users) data and the fact that smokers testing positive were more likely to report >10 symptoms and to need to have attended hospital. Of note, the OPEN-Safely study which found that in a large general practice population, adjusted for age and sex, current smokers had an HR of 1.14 (95% CI 1.05 to 1.23) for COVID-19-related death compared with never smokers.⁷ Alternatively, this finding may represent sampling bias. Among those tested, a negative PCR result was also associated with a higher rate of heart disease, cancer and respiratory disease, all factors associated with worse outcomes in people with COVID-19 but unlikely to be protective against infection. The use of swab testing for PCR diagnosis of viral infection has limitations with a significant false negative rate. It is possible that non-random differences in the way that tests were conducted (eg, nasopharyngeal or oropharyngeal swabs) or the temporal relation of testing to the development of symptoms (eg, likely more rapid for healthcare workers) could have influenced results.^{27,28} In due course, the question of relative infectivity may be answered based either on surveillance screening or widespread antibody testing.

Methodological issues

The triad of ‘classic’ symptoms we used as the primary end point was based on Public Health England guidance. We chose the presence of 5 or 10 symptoms arbitrarily to illustrate the ‘burden’ of COVID-19 on the basis that a greater number of symptoms was likely to represent more severe illness. All symptoms were given equal weight. Attending hospital in the context of potential COVID-19 was taken as a marker of disease severity. Of note, the questions were framed in such a way that hospital attendance with symptoms was clearly distinguished from being at a hospital because of work.

The study uses the presence of self-reported symptoms to define the occurrence and severity of COVID-19. Although it is possible that some of these represented conditions other than COVID-19, we have previously reported concordance between reported symptoms SARS-CoV-2 test results.¹⁴ Additionally, we observe in this larger dataset an increased symptom burden among tested positive users compared with both tested negative and untested subjects. Importantly, the pattern of correlation between symptoms did not differ between smokers and non-smokers suggesting that the increased symptom burden was not directly related to pre-existing smoking-related symptoms.

Behavioural factors or individual prior expectations and beliefs may have influenced reporting. Thus smokers may have felt themselves to be at a higher risk of developing COVID-19 making them more likely to report symptoms, thus *exaggerating* the apparent impact of smoking. Alternatively, non-smokers being in general healthier, might be expected to be more sensitive to changes in their well-being making them more likely to report symptoms, thus *underestimating* the impact of smoking.

Participants in the study were self-selected, having chosen to register to use the app. In addition, the app was only available on a smartphone raising issues of digital access and digital literacy, so caution is needed about extrapolation to the entire population, in particular older or poorer sections of the population. The overall self-reported smoking rate among app users was 11.0% and lower in all age and sex strata compared with the general UK population. This may be due to sampling bias, reflecting the demographics of this sample, as smoking rates are lower in wealthier groups²⁹ who may also have been more likely to be able to make use of a smartphone app. Smokers tended to report via the app for a shorter period, with fewer days between first and last engagement (online supplemental figure E4), which may have led to an underestimate of the effect of smoking on the development of symptoms. In addition, there were relatively fewer people in the older age groups who are most susceptible to COVID-19. Smoking status, being based on contemporary self-report by participants is likely to have been captured more accurately by the app used in the present study than in studies based on routine, historical administrative records and those where there is substantial missing data.

The COVID-19 pandemic has exacerbated socioeconomic inequalities and ethnicity is emerging as a crucial area in its development.⁷ Unfortunately, ethnicity was not included in the original set of app registration data. This omission was addressed so that this is now being collected, but unfortunately for the period covered by this analysis it was only available for 12% of individuals. Although in the sensitivity analysis in this subgroup our results seem to hold across different ethnicities, further experiments would be needed to better characterise any possible interaction between smoking and symptoms in different ethnic groups. The availability of more detailed socioeconomic data as well as more detailed occupational history would have allowed

further refinement of the effect of smoking on symptoms, particularly as smoking is one of the most important drivers of socioeconomic gradients in life expectancy.³⁰

We took the diagnosis of COVID-19 to require an individual to have symptoms. The data from the app do not, by definition, provide information about asymptomatic viral carriage which is acknowledged to be of considerable importance in the spread of SARS-CoV-2.³¹

Conclusion

Evidence that current smoking appears to increase individual and thus health system burden from COVID-19 is a strong argument for governments to accelerate rather than pause measures to deliver on tobacco control plans.^{32 33} These should include options such as polluter-pays levies on tobacco transnationals as they will continue, through the pandemic, to be highly profitable as well as enormously damaging to global health.³⁴

Our results provide compelling evidence for an association between current smoking and individual risk from COVID-19, including self-reported symptom burden and risk of attending hospital. Smoking cessation should be incorporated into public health campaigns and other efforts to address the COVID-19 pandemic.

Author affiliations

¹National Heart and Lung Institute, Imperial College London, London, UK

²The Department of Twin Research & Genetic Epidemiology, King's College London, London, UK

³Department Primary Care and Public Health, Imperial College, London, UK

⁴Respiratory Epidemiology, Occupational Medicine and Public Health, Imperial College London, London, UK

⁵Department of Twin Research, King's College London, London, UK

⁶School of Biomedical Engineering & Imaging Sciences, King's College London, London, UK

⁷Biomedical Engineering & Imaging Sciences, King's College London, London, UK

⁸Zoe Global Limited, London, UK

Correction notice This article has been corrected since it was published Online First. Figures 2 and 4 were interchanged and figure legends for figures 2 and 3 were also listed with the incorrect figure.

Twitter Nicholas S Hopkinson @COPDdoc

Acknowledgements The authors would like to thank members of the public for taking the time to enter their information into the Zoe COVID Symptom Study app in order to improve understanding of and response to the COVID-19 pandemic.

Contributors NSH, CJS and MF conceived the analysis which was developed with input from all authors. Symptom data cleaning and analyses were performed by BM, MM, SO, NR and MF. NSH, NR and MF produced the first draft of the paper to which all authors contributed. All authors have reviewed and approved the final version. MF is the guarantor.

Funding This work was supported by Zoe Global Limited as well as grants from the Wellcome Trust (212904/Z/18/Z) and the Medical Research Council (MRC)/British Heart Foundation Ancestry and Biological Informative Markers for Stratification of Hypertension (AIMHY; MR/M016560/1). TwinsUK is funded by the Wellcome Trust, Medical Research Council, European Union, Chronic Disease Research Foundation (CDRF), Zoe Global Ltd and the National Institute for Health Research (NIHR)-funded BioResource, Clinical Research Facility and Biomedical Research Centre based at Guy's and St Thomas' NHS Foundation Trust in partnership with King's College London. JSES, TDS and KSS acknowledge support from the Medical Research Council (MR/M004422/1). This work is supported by BREATHE - The Health Data Research Hub for Respiratory Health [MC_PC_19004]. BREATHE is funded through the UK Research and Innovation Industrial Strategy Challenge Fund and delivered through Health Data Research UK.

Competing interests NSH is Chair of Action on Smoking and Health and Medical Director of The British Lung Foundation. TDS is a consultant to Zoe Global Ltd (Zoe), who developed the app. JW and RD are employees of Zoe Global Ltd.

Patient consent for publication Not required.

Ethics approval The study has been approved by the King's College London Research Ethics Committee REMAS ID 18210, review reference LRS-19/20-18210 and all subscribers provided informed consent.

Provenance and peer review Not commissioned; externally peer reviewed.

Data availability statement Data may be obtained from a third party and are not publicly available. Anonymised research data will be shared with third parties via the centre for Health Data Research UK (HDRUK.ac.uk). Data updates can be found on <https://COVID.joinzoe.com>.

This article is made freely available for use in accordance with BMJ's website terms and conditions for the duration of the covid-19 pandemic or until otherwise determined by BMJ. You may use, download and print the article for any lawful, non-commercial purpose (including text and data mining) provided that all copyright notices and trade marks are retained.

ORCID iDs

Nicholas S Hopkinson <http://orcid.org/0000-0003-3235-0454>

Anthony A Laverty <http://orcid.org/0000-0003-1318-8439>

Jennifer K Quint <http://orcid.org/0000-0003-0149-4869>

Richard Davies <http://orcid.org/0000-0003-2050-3994>

REFERENCES

- Xu Z, Shi L, Wang Y, *et al*. Pathological findings of COVID-19 associated with acute respiratory distress syndrome. *Lancet Respir Med* 2020;8:420–2.
- Guzik TJ, Mohiddin SA, Dimarco A, *et al*. COVID-19 and the cardiovascular system: implications for risk assessment, diagnosis, and treatment options. *Cardiovasc Res* 2020;116:1666–87.
- George PM, Barratt SL, Condliffe R, *et al*. Respiratory follow-up of patients with COVID-19 pneumonia. *Thorax* 2020;75:1009–16.
- W-j G, W-h L, Zhao Y, *et al*. Comorbidity and its impact on 1590 patients with COVID-19 in China: a nationwide analysis. *Eur Respir J* 2020;55.
- Ni Lochlainn M, Lee KA, Sudre CH, *et al*. Key predictors of attending hospital with COVID-19: an association study from the COVID symptom Tracker APP in 2,618,948 individuals. *medRxiv* 2020.
- Docherty AB, Harrison EM, Green CA, *et al*. Features of 20 133 UK patients in hospital with covid-19 using the ISARIC WHO Clinical Characterisation Protocol: prospective observational cohort study. *BMJ* 2020;369:m1985.
- Williamson EJ, Walker AJ, Bhaskaran K, *et al*. Factors associated with COVID-19-related death using OpenSAFELY. *Nature* 2020;584:430–6.
- Arcavi L, Benowitz NL. Cigarette smoking and infection. *Arch Intern Med* 2004;164:2206–16.
- Stämpfli MR, Anderson GP. How cigarette smoke skews immune responses to promote infection, lung disease and cancer. *Nat Rev Immunol* 2009;9:377–84.
- Royal College of Physicians. Hiding in plain sight: treating tobacco dependency in the NHS, 2018. Available: <https://www.rcplondon.ac.uk/projects/outputs/hiding-plain-sight-treating-tobacco-dependency-nhs>
- Liu W, Tao Z-W, Wang L, *et al*. Analysis of factors associated with disease outcomes in hospitalized patients with 2019 novel coronavirus disease. *Chin Med J* 2020;133:1032–8.
- Zhang J-J, Dong X, Cao Y-Y, *et al*. Clinical characteristics of 140 patients infected with SARS-CoV-2 in Wuhan, China. *Allergy* 2020;75:1730–41.
- Zhou F, Yu T, Du R, *et al*. Clinical course and risk factors for mortality of adult inpatients with COVID-19 in Wuhan, China: a retrospective cohort study. *Lancet* 2020;395:1054–62.
- Huang C, Wang Y, Li X, *et al*. Clinical features of patients infected with 2019 novel coronavirus in Wuhan, China. *Lancet* 2020;395:497–506.
- Menni C, Valdes AM, Freidin MB, *et al*. Real-Time tracking of self-reported symptoms to predict potential COVID-19. *Nat Med* 2020;26:1037–40.
- Nguyen LH, Drew DA, Graham MS, *et al*. Risk of COVID-19 among front-line health-care workers and the general community: a prospective cohort study. *Lancet Public Health* 2020;5:e475–83.
- Li J, Ji L. Adjusting multiple testing in multilocus analyses using the eigenvalues of a correlation matrix. *Heredity* 2005;95:221–7.
- Philip KEJ, Lonergan B, Cumella A, *et al*. COVID-19 related concerns of people with long-term respiratory conditions: a qualitative study. *medRxiv* 2020.
- Philip K, Cumella A, Farrington-Douglas J, *et al*. Respiratory patient experience of measures to reduce risk of COVID-19: findings from a descriptive cross-sectional UK wide survey. *BMJ Open* 2020;10:e040951.
- Troelstra SA, Coenen P, Boot CR, *et al*. Smoking and sickness absence: a systematic review and meta-analysis. *Scand J Work Environ Health* 2020;46:5–18.
- Brake SJ, Barnsley K, Lu W, *et al*. Smoking upregulates angiotensin-converting enzyme-2 receptor: a potential adhesion site for novel coronavirus SARS-CoV-2 (Covid-19). *J Clin Med* 2020;9:841.
- Smith JC, Sheltzer JM. Cigarette smoke triggers the expansion of a subpopulation of respiratory epithelial cells that express the SARS-CoV-2 receptor ACE2. *bioRxiv* 2020.
- Leung JM, Yang CX, Tam A, *et al*. ACE-2 expression in the small airway epithelia of smokers and COPD patients: implications for COVID-19. *Eur Respir J* 2020;55. doi:10.1183/13993003.00688-2020. [Epub ahead of print: 14 May 2020].

- 24 Hoffmann M, Kleine-Weber H, Schroeder S, *et al.* SARS-CoV-2 cell entry depends on ACE2 and TMPRSS2 and is blocked by a clinically proven protease inhibitor. *Cell* 2020;181:e278:271–80.
- 25 Muus C, Luecken MD, Eraslan G, *et al.* Integrated analyses of single-cell atlases reveal age, gender, and smoking status associations with cell type-specific expression of mediators of SARS-CoV-2 viral entry and highlights inflammatory programs in putative target cells. *bioRxiv* 2020.
- 26 Messner B, Bernhard D. Smoking and cardiovascular disease. *Arterioscler Thromb Vasc Biol* 2014;34:509–15.
- 27 Woelfel R, Corman VM, Guggemos W, *et al.* Clinical presentation and virological assessment of hospitalized cases of coronavirus disease 2019 in a travel-associated transmission cluster. *medRxiv* 2020.
- 28 Yang Y, Yang M, Shen C, *et al.* Evaluating the accuracy of different respiratory specimens in the laboratory diagnosis and monitoring the viral shedding of 2019-nCoV infections. *medRxiv* 2020.
- 29 Office for National Statistics. Adult smoking habits in England, 2019. Available: <https://www.ons.gov.uk/peoplepopulationandcommunity/healthandsocialcare/healthandlifeexpectancies/datasets/adultsmokinghabitsinengland> [Accessed 20 Jan 2020].
- 30 Jha P, Peto R, Zatonski W, *et al.* Social inequalities in male mortality, and in male mortality from smoking: indirect estimation from national death rates in England and Wales, Poland, and North America. *Lancet* 2006;368:367–70.
- 31 Ra SH, Lim JS, Kim G-U, *et al.* Upper respiratory viral load in asymptomatic individuals and mildly symptomatic patients with SARS-CoV-2 infection. *Thorax* 2020. doi:10.1136/thoraxjnl-2020-215042. [Epub ahead of print: 22 Sep 2020].
- 32 Hopkinson NS. The path to a smoke-free England by 2030. *BMJ* 2020;368:m518.
- 33 Britton J, Arnott D, McNeill A, *et al.* Nicotine without smoke-putting electronic cigarettes in context. *BMJ* 2016;353:i1745.
- 34 Zafeiridou M, Hopkinson NS, Voulvoulis N. Cigarette smoking: an assessment of tobacco's global environmental footprint across its entire supply chain. *Environ Sci Technol* 2018;52:8087–94.