

# Acute respiratory failure-related excess mortality in pediatric sepsis

Garrett Keim <sup>1,2,3</sup> Andrew G Percy,<sup>1</sup> Adam S Himebauch,<sup>1,2</sup> Jesse Y Hsu,<sup>4</sup> Jason D Christie,<sup>5</sup> Nadir Yehya<sup>1,2,3</sup>

<sup>1</sup>Department of Anesthesiology and Critical Care Medicine, The Children's Hospital of Philadelphia, Philadelphia, Pennsylvania, USA

<sup>2</sup>Department of Anesthesiology and Critical Care Medicine, University of Pennsylvania Perelman School of Medicine, Philadelphia, Pennsylvania, USA

<sup>3</sup>Leonard Davis Institute of Health Economics, Philadelphia, Pennsylvania, USA

<sup>4</sup>Center for Clinical Epidemiology and Biostatistics, University of Pennsylvania Perelman School of Medicine, Philadelphia, PA, USA

<sup>5</sup>Division of Pulmonary, Allergy, and Critical Care Medicine, University of Pennsylvania Perelman School of Medicine, Philadelphia, Pennsylvania, USA

## Correspondence to

Dr Garrett Keim, Department of Anesthesiology and Critical Care Medicine, The Children's Hospital of Philadelphia, Philadelphia, Pennsylvania 19104, USA; keimg@chop.edu  
Published Online First 24 May 2023

## ABSTRACT

Excess mortality risk imparted by acute respiratory failure in children is unknown. We determined excess mortality risk associated with mechanically ventilated acute respiratory failure in pediatric sepsis. Novel ICD10-based algorithms were derived and validated to identify a surrogate for acute respiratory distress syndrome to calculate excess mortality risk. Algorithm-identified ARDS was identified with specificity of 96.7% (CI 93.0 – 98.9) and sensitivity of 70.5% (CI 44.0 – 89.7). Excess risk of mortality for ARDS was 24.4% (CI 22.9 – 26.2). Development of ARDS requiring mechanical ventilation imparts modest excess risk of mortality in septic children.

## BACKGROUND

Interventional trials in paediatric Acute Respiratory Distress Syndrome (ARDS) have largely been unsuccessful in improving mortality, despite improvements in hypoxemia or ventilator days.<sup>1,2</sup> One explanation for this phenomenon is that patients are dying from factors related to their chronic comorbidities or ARDS inciting aetiology, with sepsis being a frequent cause of ARDS, but not from acute respiratory failure (ARF) itself, making mortality less modifiable by ARDS-directed interventions.<sup>3</sup> Efforts to dissect this relationship have examined attributable mortality, or the fraction of mortality due to ARDS in an at-risk population who did not die of ARDS. A recent adult study determined ARDS-attributable mortality, in a population of septic adults, at 27–37%.<sup>4</sup> A comparable analysis in paediatrics is limited by the lack of available sepsis trials, small cohort sizes, accurate ARDS determination and lower mortality rates. Determination of excess mortality risk,<sup>5</sup> defined as the increased mortality from ARDS development in children with sepsis, may be possible through the use of a large administrative dataset. The determination of ARDS in these datasets, however, is plagued by misclassification bias.<sup>6</sup> One way to mitigate this bias is via electronic health record (EHR) confirmation of ICD-derived diagnoses. We therefore developed an ICD-10 diagnosis and procedural code algorithm maximising specificity to accurately identify an administrative database surrogate for ARDS defined as ARF from a pulmonary, sepsis or shock aetiology requiring invasive mechanical ventilation (IMV)  $\geq 24$  hours. We assessed construct validity through determination of the excess mortality risk of algorithm-identified ARDS, hypothesising that ARDS would account for at least 20% of excess risk of mortality in this population.

## METHODS

### Study design

This retrospective study utilised a single centre cohort for algorithm-identified ARDS generation and a multicenter cohort to assess algorithm performance and to determine excess mortality risk. This study was deemed exempt and need for consent waived by the Children's Hospital of Philadelphia (CHOP) Institutional Review Board (IRB). Data for this study were obtained from the Paediatric Health Information System (PHIS).<sup>7</sup>

### Algorithm generation

We identified all children from CHOP with ICD-10 codes of interest in PHIS.<sup>7</sup> The entire cohort was subjected to a random number generation algorithm and subjects 1–200 were used to create a reference standard through EHR review, based on power calculations to achieve 90% algorithm specificity with a hypothesised prevalence of 10%. Iterative ICD-10 algorithms (table 1) were tested against this standard initially adding ICD codes that are common risk factors for ARDS and finally excluded key neurologic diagnoses that had prolonged intubations without other features of ARDS.

### Excess risk of mortality

We determined in-hospital mortality for each diagnostic category: (1) respiratory diagnosis without sepsis or ARF; (2) severe sepsis without ARF; (3) algorithm-identified ARDS. We generated unadjusted Kaplan-Meier survival curves, stratified by underlying diagnosis category, with differences between survival curves determined using log-rank testing and log-rank test for trends. We utilised Cox proportional hazard modelling, censored at 28 days, to determine the hazard of in-hospital mortality for algorithm-identified ARDS. Multivariable Cox proportional hazard models included age, race/ethnicity, presence of complex chronic condition,<sup>8</sup> and hospital region as confounders. We determined excess risk of mortality as an excess log hazard using the proportional hazard beta-coefficients in the following manner<sup>9</sup>:

Respiratory diagnosis without sepsis or ARF: Reference

Sepsis with ARDS:  $\beta_1$

Sepsis without ARDS:  $\beta_2$

Excess log hazard fraction:  $(\beta_1 - \beta_2) / \beta_1$

95% CI: bootstrap with 100 simulations

Data analysis was performed using Stata 17 (StataCorp, College Station, TX) and GraphPad Prism 9 (GraphPad Software, Inc.).



► <http://dx.doi.org/10.1136/thorax-2023-220429>



© Author(s) (or their employer(s)) 2023. No commercial re-use. See rights and permissions. Published by BMJ.

**To cite:** Keim G, Percy AG, Himebauch AS, et al. *Thorax* 2023;**78**:1135–1137.

**Table 1** International Classification of Disease-10 Codes and Algorithms

Diagnosis	ICD-10 codes
Acute Respiratory Distress Syndrome	J80*, J81*
Asthma	J45*
Pneumonia	J09*, J10*, J11*, J12*, J13*, J14*, J15*, J16*, J17*, J18*
Bronchiolitis	J20*, J21*, J22*, J40
Pneumonitis	J68*, J69*
Other respiratory failure	J96*, R06.03
Mechanical Ventilation (Diagnosis)	Z99.11
Sepsis/ Shock	A41*, R57*, R65.2*
Seizure and Status Epilepticus	G40.901, R56.9*, G40.001, G40.101, G40.111
Procedure	ICD-10 Code
Invasive Mechanical Ventilation<24 hours	5A19035
Invasive Mechanical Ventilation≥24 hours	5A19045, 5A19055
Non-Invasive Ventilation<24 hours	5A09035
Non-Invasive Ventilation≥24 hours	5A09045, 5A09055
Endotracheal Intubation	0B17EZ
Algorithm	Code Composition
1) ≥24 Hour Ventilation Codes	5A19045 or 5A19055 or 5A09045 or 5A09055
2) ≥24 hours Ventilation Plus Respiratory and Sepsis Codes	(5A19045 or 5A19055 or 5A09045 or 5A09055) + (Any Diagnosis Code for Acute Respiratory Distress Syndrome, Asthma, Pneumonia, Bronchiolitis, Pneumonitis, Other respiratory failure, Sepsis/ Shock)
3) ≥24 hours Ventilation Plus Respiratory and Sepsis Codes, Exclude Neurologic Codes	(5A19045 or 5A19055 or 5A09045 or 5A09055) + (Any Diagnosis Code for Acute Respiratory Distress Syndrome, Asthma, Pneumonia, Bronchiolitis, Pneumonitis, Other respiratory failure, Sepsis/ Shock) + (NONE of G40.901 or R56.9* or G40.001 or G40.101 or G40.111)
4) ≥24 Hour IMV Codes	5A19045 or 5A19055
5) ≥24 Hour IMV Plus Respiratory and Sepsis Codes	(5A19045 or 5A19055) + (Any Diagnosis Code for Acute Respiratory Distress Syndrome, Asthma, Pneumonia, Bronchiolitis, Pneumonitis, Other respiratory failure, Sepsis/ Shock)
6) ≥24 Hour IMV Plus Respiratory and Sepsis Codes, Exclude Neurologic Codes (Algorithm-Identified ARDS)	(5A19045 or 5A19055) + (Any Diagnosis Code for Acute Respiratory Distress Syndrome, Asthma, Pneumonia, Bronchiolitis, Pneumonitis, Other respiratory failure, Sepsis/ Shock) + (NONE of G40.901 or R56.9* or G40.001 or G40.101 or G40.111)

\*Denotes that any suffix code was allowed.

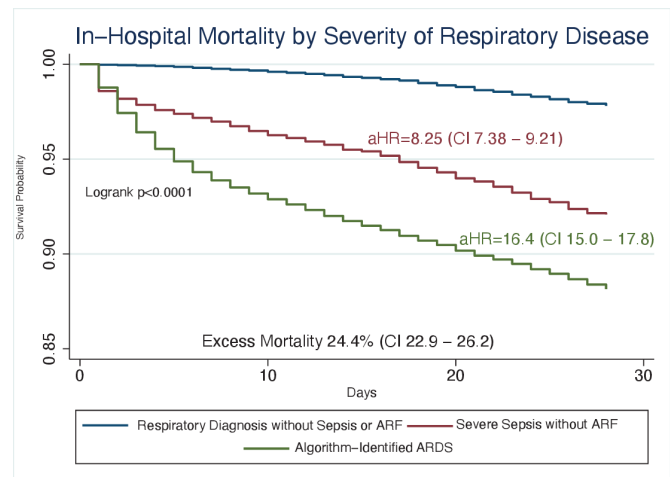
## RESULTS

### Algorithm derivation

Utilising ICD-10 codes for respiratory diseases and sepsis, procedural codes for invasive mechanical ventilation and excluding patients with specific neurologic disease codes, an algorithm (table 1, Algorithm 6) demonstrated excellent specificity (96.7%, 95% CI 93.0 to 98.9) with good sensitivity (70.5%, 95% CI 44.0 to 89.7) to identify algorithm-identified ARDS (table 2).

### Excess risk of mortality of ARDS in sepsis

Sepsis without algorithm-identified ARDS mortality was 6.6% (1,313/19,810; 95% CI 6.3% to 7.0%). Septic patients with algorithm-identified ARDS had highest mortality, 12.7% (8,600/67,930; 95% CI 12.4% to 12.9%). In 28-day survival analysis, a significant trend in worsened survival was seen from respiratory diagnosis to sepsis to algorithm-identified ARDS (logrank Chi<sup>2</sup> p<0.0001) (figure 1). In adjusted regression, both sepsis without ARDS (aHR=8.25, CI 7.38 to 9.21) and



**Figure 1** Kaplan-Meier Survival Curve for Children with Respiratory Diagnoses without Sepsis, Septic Children, and Septic Children with ARDS. The unadjusted Kaplan-Meier survival curves, censored at 28 days, for each diagnosis category are presented. The Log-rank test for trend is presented showing the significant difference between survival for each level of diagnosis category. Patient and hospital factor adjusted Cox proportional hazard ratios are presented next to the diagnostic categories' representative survival curve. Excess risk of mortality represents the proportion of deaths in children with algorithm-identified ARDS in the septic population.

with algorithm-identified ARDS (aHR=16.4, CI 15.0 to 17.8) increased mortality, with algorithm-identified ARDS imparting the highest risk (p<0.0001). The excess risk of mortality of patients with algorithm-identified ARDS in this population of septic children was 24.4% (CI 22.9% to 26.2%). We performed two sub-analyses, first acknowledging that care for children with ARDS may have evolved over the course of our study we performed a sensitivity analysis accounting for year as a clustering variable and found the same excess mortality point estimate (24.4%, CI 22.6% to 26.7%). Second, 90-day survival analysis demonstrated an excess risk of mortality for ARDS of 21.4% (CI 20.1% to 23.0%).

## DISCUSSION

Using a novel ICD10-based algorithm to identify a surrogate for ARDS in administrative datasets, we demonstrated that ARDS is responsible for nearly one-quarter of the excess risk of mortality in patients with sepsis. Our quantification of the degree by which ARDS contributed to mortality in paediatric sepsis supports the construct validity of our ICD coding algorithm. Our estimation of excess mortality due to ARDS in a paediatric population is comparable to previous adult attributable mortality estimates.<sup>4</sup> Our estimation of excess mortality can help inform future trials in paediatric ARF and ARDS. Trials with interventions postulated to exert a beneficial effect on mortality primarily by mitigating ARDS would require either extremely high efficacy or prohibitively large enrollment targets.

Our study has limitations. Retrospective analysis of administrative data was used in determination of the excess risk of mortality of ARDS in septic children, but does not provide inference on the causal pathway between ARDS and mortality in these patients. Utilisation of this algorithm involves both ICD-10 diagnostic and procedural codes, making algorithm-identified ARDS not applicable in datasets lacking procedural codes or using ICD-9. Administrative datasets typically lack timing of diagnoses

**Table 2** Test Characteristics for Specified Algorithms

Algorithm		Sensitivity	Specificity	Positive predictive value	Negative predictive value	Accuracy
<b>ARF Requiring NIV or IMV</b>						
1	≥ 24 Hour Ventilation Codes	95.5 (84.5–99.4)	91.0 (85.4 to 95.0)	75.0 (61.6–85.6)	98.6 (95.0–99.8%)	92.0 (87.3–95.4)
2	≥ 24 hours Ventilation Plus Respiratory and Sepsis Codes	95.3 (84.2–99.4)	90.3 (84.5 to 94.5)	73.2 (59.7–84.2)	98.6 (95.0–99.8)	90.5 (85.6–94.2)
3	≥ 24 hours Ventilation Plus Respiratory and Sepsis Codes, exclude neurologic codes	81.4 (66.6–91.6)	94.8 (90.1 to 97.7)	81.4 (66.6–91.6)	94.8 (90.1–97.7%)	91.0 (86.1–94.6)
<b>ARF Requiring IMV for ≥24 hours only from Pulmonary, Sepsis, or Shock Etiologies</b>						
4	≥24 Hour IMV Codes	76.5 (50.1–93.2)	94.0 (89.5 to 97.0)	54.2 (32.8–74.4)	97.7 (94.2–99.4)	92.5 (87.9–95.7)
5	≥24 Hour IMV Plus Respiratory and Sepsis Codes	76.5 (50.1–93.2)	94.0 (89.5 to 97.0)	54.2 (32.8–74.4)	97.7 (94.2–99.4)	92.5 (87.9–95.7)
6	Algorithm-Identified ARDS (≥24 Hour IMV Plus Respiratory and Sepsis Codes and exclude neurologic codes)	70.5 (44.0–89.7)	96.7 (93.0 to 98.9)	66.7 (41.0–86.7)	97.3 (93.7–99.1)	94.5 (90.4–97.2)

data, making determination of ARF onset in relation to sepsis problematic. However, we and others have previously shown that ARF develops concurrently with sepsis onset.<sup>10</sup> Sepsis and ARDS identification using administrative data and ICD codes has repeatedly been attempted with variable accuracy<sup>11–13</sup> and optimum performance occurs in the dataset of code algorithm generation limiting the generalizability of any such algorithm, including ours. Despite these limitations, use of our derived algorithms in large single and multicenter administrative databases reproduced characteristics consistent with what was seen in the derivation cohort, suggesting validity of our algorithm. Use of our ICD algorithm offers investigators a reproducible way of accurately identifying ARF requiring IMV and an administrative database surrogate of ARDS, intended for use in retrospective research where ARDS was not otherwise identified. Future studies in EHR datasets with granular timing of sepsis and ARF onset are needed to confirm our findings. However, we are reassured that our estimates for algorithm-identified ARDS excess risk of mortality are entirely consistent with adult ARDS.

**Twitter** Garrett Keim @DrGKeim

**Contributors** Dr. GK was responsible for design of the study, data acquisition, analysis, and interpretation, and drafting and revision of the manuscript content. Dr. AGP contributed to data acquisition and manuscript revisions. Dr. JYH contributed statistical support. Drs. ASH, JC and NY contributed to design of the study, data analysis, interpretation, and manuscript revision. All authors approved the final version of the submitted manuscript.

**Funding** Dr. GK received support from NIH NIGMS T32GM112596 and NICHD T32HD060550. Dr. JC received support from NIH NHLBI K24HL115354. Dr. ASH received support from the NIH NHLBI K23HL153759.

**Competing interests** None declared.

**Patient consent for publication** Not applicable.

**Provenance and peer review** Not commissioned; externally peer reviewed.

#### ORCID iD

Garrett Keim <http://orcid.org/0000-0002-7054-8798>

#### REFERENCES

- Curley MAQ, Hibberd PL, Fineman LD, *et al.* Effect of prone positioning on clinical outcomes in children with acute lung injury: a randomized controlled trial. *JAMA* 2005;294:229–37.
- Willson DF, Thomas NJ, Tamburro R, *et al.* Pediatric calfactant in acute respiratory distress syndrome trial. *Pediatr Crit Care Med* 2013;14:657–65.
- Ketcham SW, Sedhai YR, Miller HC, *et al.* Causes and characteristics of death in patients with acute hypoxemic respiratory failure and acute respiratory distress syndrome: a retrospective cohort study. *Crit Care* 2020;24:391.
- Auriemma CL, Zhuo H, Delucchi K, *et al.* Acute respiratory distress syndrome-attributable mortality in critically ill patients with sepsis. *Intensive Care Med* 2020;46:1222–31.
- Tancredi M, Rosengren A, Svensson A-M, *et al.* Excess mortality among persons with type 2 diabetes. *N Engl J Med* 2015;373:1720–32.
- Gavrielov-Yusim N, Friger M. Use of administrative medical databases in population-based research. *J Epidemiol Community Health* 2014;68:283–7.
- Pediatric health information system. 2021. Available: <https://www.childrenshospitals.org/phits>
- Feudtner C, Feinstein JA, Zhong W, *et al.* Pediatric complex chronic conditions classification system version 2: updated for ICD-10 and complex medical technology dependence and transplantation. *BMC Pediatr* 2014;14:199.
- Prescott HC, Sjoding MW, Langa KM, *et al.* Late mortality after acute hypoxic respiratory failure. *Thorax* 2018;73:618–25.
- Yehya N, Keim G, Thomas NJ. Subtypes of pediatric acute respiratory distress syndrome have different predictors of mortality. *Intensive Care Med* 2018;44:1230–9.
- Liu B, Hadzi-Tosev M, Liu Y, *et al.* Accuracy of international classification of diseases, 10th revision codes for identifying sepsis: a systematic review and meta-analysis. *Crit Care Explor* 2022;4:e0788.
- Jolley RJ, Sawka KJ, Yergens DW, *et al.* Validity of administrative data in recording sepsis: a systematic review. *Crit Care* 2015;19:139.
- Kerlin MP, Weissman GE, Wonneberger KA, *et al.* Validation of administrative definitions of invasive mechanical ventilation across 30 intensive care units. *Am J Respir Crit Care Med* 2016;194:1548–52.