

Supplementary materials

International differences in lung cancer survival by sex, histological type and stage at diagnosis

Marzieh Araghi^{1*}, Miranda M Fidler-Benaoudia^{2*}, Melina Arnold¹, Mark Rutherford^{1,3}, Aude Bardot¹, Jacques Ferlay¹, Oliver Bucher⁴, Prithwish De⁵, Gerda Engholm⁶, Anna Gavin⁷, Serena Kozie⁸, Alana Little⁹, Bjørn Møller¹⁰, Nathalie Saint-Jacques¹¹, Hanna Tervonen⁹, Paul Walsh¹², Ryan Woods^{13,14}, (C/ARC), Freddie Bray¹, Isabelle Soerjomataram¹

*Authors have contributed equally to the paper

¹ Section of Cancer Surveillance, International Agency for Research on Cancer, 150 Cours Albert Thomas, Lyon, 69372 CEDEX 08, France

² Cancer Epidemiology and Prevention Research, Holy Cross Centre, Calgary AB T2S 3C3, Canada

³ Department of Health Sciences, University of Leicester, University Road, Leicester, LE1 7RH, U.K.

⁴ Department of Epidemiology and Cancer Registry, Cancercare Manitoba, MB, Canada

⁵ Analytics and Informatics, Cancer Care Ontario, Toronto, Canada.

⁶ Surveillance and Pharmacoepidemiology, Danish Cancer Society Research Center, Copenhagen, Denmark

⁷ Northern Ireland Cancer Registry, Queen's University Belfast, Belfast, Northern Ireland

⁸ Saskatchewan Cancer Agency 200-4545 Parliament Avenue Regina, SK S4W 0G3

⁹ Cancer Institute New South Wales (NSW), PO Box 41, Alexandria NSW 1435, Australia

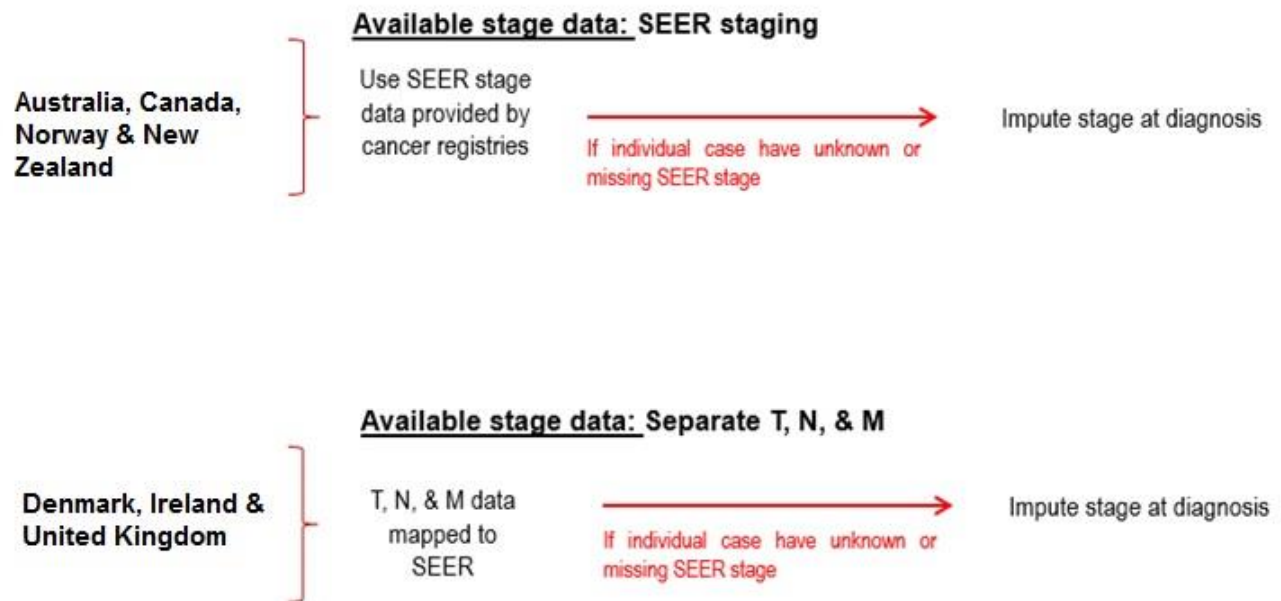
¹⁰ Department of Registration, Cancer Registry of Norway, Oslo, Norway

¹¹ Nova Scotia Health Authority Cancer Care Program, Registry & Analytics, 1276 South Street, Halifax, B3H 2Y9, NS, Canada

¹² National Cancer Registry Ireland, Cork Airport Business Park, Kinsale Road, Cork T12 CDF7, Ireland.

¹³ BC Cancer, Vancouver, British Columbia, Canada

¹⁴ Faculty of Health Sciences, Simon Fraser University, Burnaby, BC V5A 1S6, Cancer Control Research, BC Cancer, Vancouver, BC V5Z 1L3



Supplementary Figure 1A. Diagram of processing stage data by country

Stage Grouping	Single TNM	SEER
IV	M1 N3	Distant
III, II	N2, N1 T4, T3	Regional
I	T2 (2b, 2a), T1 (1b, 1a)	Localised

Supplementary Figure 1B. Algorithm for mapping TNM stage to SEER stage

Supplementary Table 1. Age-standardised* one- and three-year net survival (%) by stage at diagnosis (without imputation, presenting results of those with missing stage information) and country for non-small cell lung carcinoma patients diagnosed during 2010-2014, both sexes combined

Stage	Australia [†]	Canada [†]	Denmark	Ireland [†]	New Zealand	Norway	United Kingdom [†]
All patients	50.4 (49.5 - 51.3)	52.9 (52.3 - 53.5)	49.3 (48.1 - 50.5)	47.2 (45.7 - 48.7)	45.2 (43.6 - 46.7)	50.5 (49.0 - 52.0)	44.2 (43.8 - 44.6)
TNM Stage							
Stage I		93.3 (92.6 - 93.9)	92.6 (90.7 - 94.1)	91.5 (88.6 - 93.7)		94.7 (92.7 - 96.2)	90.8 (90.1 - 91.5)
Stage II		81.9 (80.1 - 83.6)	87.2 (85.4 - 88.7)	75.4 (71.4 - 78.9)		85.0 (82.4 - 87.3)	78.5 (77.3 - 79.6)
Stage III		60.0 (58.6 - 61.3)	59.8 (57.3 - 62.2)	50.0 (46.9 - 52.9)		56.2 (52.6 - 59.6)	52.3 (51.4 - 53.2)
Stage IV		27.3 (26.5 - 28.0)	26.2 (24.8 - 27.6)	22.4 (20.4 - 24.5)		25.1 (23.1 - 27.1)	21.9 (21.4 - 22.4)
Missing		50.8 (48.5 - 53.0)	35.8 (29.8 - 41.8)	41.7 (37.4 - 45.9)		38.9 (35.6 - 42.1)	40.9 (40.0 - 41.9)
Mapped SEER stage							
Localised	83.7 (81.8 - 85.5)	92.9 (92.1 - 93.7)	90.2 (88.7 - 91.4)	85.9 (83.7 - 87.8)	94.0 (90.5 - 96.2)	84.6 (82.5 - 86.4)	90.2 (89.6 - 90.8)
Regional	69.0 (66.9 - 71.0)	70.5 (69.5 - 71.4)	69.2 (67.2 - 71.2)	53.9 (51.0 - 56.7)	66.1 (62.5 - 69.5)	63.7 (61.4 - 66.0)	62.4 (61.5 - 63.3)
Distant	27.1 (25.7 - 28.5)	27.4 (26.7 - 28.2)	27.6 (26.3 - 29.0)	24.7 (22.8 - 26.7)	21.4 (19.6 - 23.4)	24.1 (22.3 - 26.0)	23.6 (23.1 - 24.1)
Missing	65.0 (61.7 - 68.0)	49.8 (47.3 - 52.1)	29.5 (21.0 - 38.4)	37.9 (31.9 - 43.9)	55.1 (52.2 - 57.9)	53.2 (44.3 - 61.2)	33.1 (32.1 - 34.2)
1-year NS (95% CI)[‡]							
All patients	26.4 (25.6 - 27.2)	31.0 (30.4 - 31.6)	26.4 (25.4 - 27.5)	25.6 (24.4 - 27.0)	23.1 (21.7 - 24.4)	28.1 (26.8 - 29.5)	22.2 (21.9 - 22.5)
TNM Stage							
Stage I		78.2 (77.1 - 79.4)	79.0 (76.0 - 81.7)	76.5 (72.5 - 80.0)		81.1 (77.8 - 84.0)	71.9 (70.6 - 73.2)
Stage II		57.8 (55.4 - 60.2)	66.1 (63.4 - 68.6)	53.6 (49.9 - 57.2)		58.9 (54.4 - 63.2)	51.8 (50.2 - 53.4)
Stage III		27.9 (26.6 - 29.2)	27.0 (24.9 - 29.2)	20.1 (17.5 - 22.7)		22.2 (18.9 - 25.5)	20.3 (19.4 - 21.2)
Stage IV		8.2 (7.7 - 8.7)	6.0 (5.2 - 6.8)	6.2 (5.2 - 7.4)		5.7 (4.6 - 6.9)	5.1 (4.8 - 5.4)
Missing		30.0 (28.1 - 31.9)	16.2 (11.1 - 22.2)	18.7 (15.4 - 22.1)		20.8 (18.3 - 23.5)	20.1 (19.5 - 20.7)
Mapped SEER stage							
Localised	65.3 (62.8 - 67.8)	78.3 (77.0 - 79.6)	74.5 (72.3 - 76.5)	68.2 (65.4 - 70.8)	85.3 (79.6 - 89.5)	67.6 (64.7 - 70.3)	72.6 (71.6 - 73.6)
Regional	38.6 (36.5 - 40.8)	42.5 (41.4 - 43.6)	37.7 (35.4 - 40.0)	26.5 (23.9 - 29.1)	38.0 (34.2 - 41.9)	31.6 (28.9 - 34.4)	32.0 (31.1 - 32.8)
Distant	8.0 (7.2 - 8.9)	8.3 (7.8 - 8.8)	6.8 (6.1 - 7.7)	6.8 (5.8 - 8.0)	7.0 (5.8 - 8.3)	6.4 (5.4 - 7.5)	5.6 (5.3 - 5.9)
Missing	28.3 (24.2 - 32.5)	29.1 (27.1 - 31.1)	14.6 (7.3 - 24.4)	15.0 (11.1 - 19.4)	22.4 (19.6 - 25.3)	24.5 (15.4 - 34.9)	12.2 (11.7 - 12.8)
3-year NS (95% CI)[‡]							

[‡]NS = Net Survival; CI = Confidence Interval

[†]Australia includes New South Wales; Canada includes Alberta, British Columbia, New Brunswick, Manitoba, Newfoundland, Nova Scotia, Ontario, Prince Edward Island, and Saskatchewan; Ireland (2010-2013); United Kingdom includes England, Northern Ireland, Scotland, and Wales

* Standard population used for age-standardisation is International Cancer Survival Standard (ICSS-1) derived in Corazziari et al. (2004)

Supplementary Table 2. Age-standardised^o one- and three-year net survival (%) by stage at diagnosis (without imputation, presenting results of those with missing stage information) and country for small cell lung carcinoma patients diagnosed during 2010-2014, both sexes combined

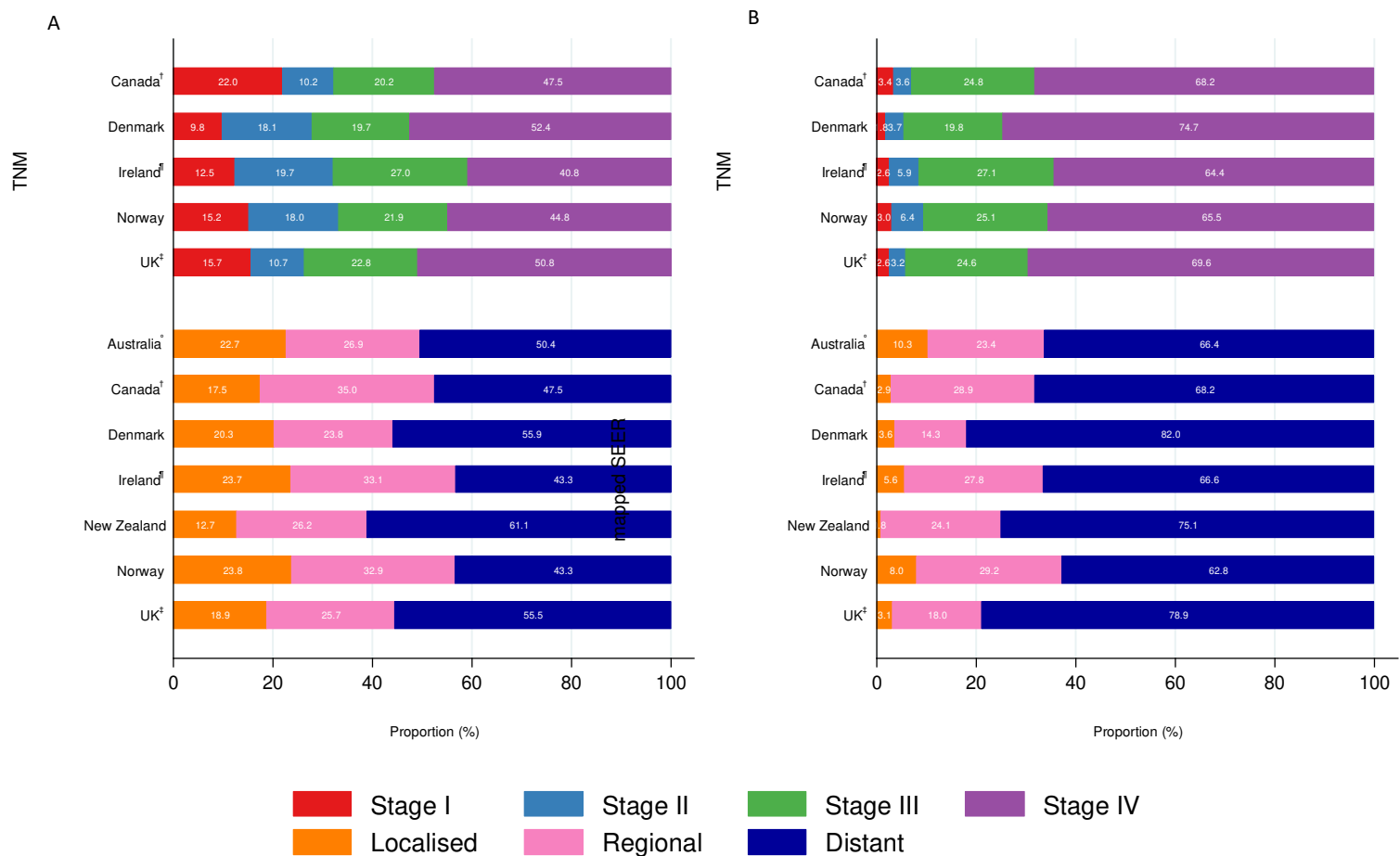
	Stage	Australia [†]	Canada [†]	Denmark	Ireland [†]	New Zealand	Norway	United Kingdom [†]	
	All patients	34.7 (32.4 - 37.0)	33.9 (32.3 - 35.4)	35.0 (32.3 - 37.8)	30.7 (27.3 - 34.2)	29.4 (25.8 - 33.1)	34.1 (30.9 - 37.3)	28.1 (27.2 - 28.9)	
1-year NS (95% CI) [‡]	TNM Stage								
	Stage I		82.9 (76.7 - 87.6)	90.8 (71.2 - 97.3)	*		79.9 (60.2 - 90.5)	76.9 (71.7 - 81.2)	
	Stage II		74.3 (67.4 - 79.9)	79.8 (68.7 - 87.3)	69.8 (53.4 - 81.4)		74.9 (60.9 - 84.5)	66.4 (61.6 - 70.8)	
	Stage III		53.2 (50.5 - 55.8)	54.4 (49.3 - 59.3)	43.6 (36.9 - 50.1)		55.4 (48.7 - 61.6)	46.8 (45.0 - 48.5)	
	Stage IV		20.0 (18.8 - 21.3)	24.2 (21.9 - 26.5)	17.9 (14.7 - 21.2)		19.7 (16.6 - 23.0)	17.1 (16.3 - 17.9)	
	Missing		40.3 (34.0 - 46.5)	39.4 (26.8 - 51.8)	40.5 (31.8 - 48.9)		31.7 (27.3 - 36.2)	27.1 (25.4 - 28.8)	
	Mapped SEER stage								
	Localised	57.1 (47.7 - 65.3)	83.5 (76.2 - 88.7)	80.5 (68.6 - 88.3)	65.4 (49.4 - 77.5)	*	65.8 (55.7 - 74.1)	72.1 (67.3 - 76.3)	
	Regional	61.6 (55.6 - 67.1)	56.6 (54.1 - 58.9)	62.2 (56.2 - 67.7)	46.2 (39.9 - 52.3)	44.3 (34.7 - 53.4)	57.8 (52.4 - 62.7)	52.0 (49.9 - 53.9)	
	Distant	21.3 (18.5 - 24.2)	20.2 (19.0 - 21.5)	26.5 (24.3 - 28.7)	20.3 (17.2 - 23.7)	15.1 (12.0 - 18.5)	17.8 (15.3 - 20.5)	20.2 (19.5 - 21.0)	
Missing	54.9 (45.2 - 63.6)	34.0 (27.4 - 40.6)	32.9 (15.5 - 51.5)	39.0 (25.9 - 51.8)	51.0 (44.1 - 57.4)	39.0 (23.1 - 54.6)	27.2 (25.4 - 29.1)		
3-year NS (95% CI) [‡]	All patients	10.0 (8.5 - 11.6)	11.4 (10.2 - 12.7)	9.7 (7.9 - 11.8)	9.1 (7.2 - 11.3)	9.2 (6.9 - 11.7)	11.3 (9.0 - 13.8)	7.7 (7.2 - 8.2)	
	TNM Stage								
	Stage I		52.9 (44.5 - 60.7)	62.8 (41.4 - 78.2)	*		47.6 (28.4 - 64.6)	45.1 (38.4 - 51.5)	
	Stage II		36.4 (28.9 - 44.0)	49.4 (36.8 - 60.8)	43.4 (28.8 - 57.1)		42.7 (29.9 - 54.9)	34.2 (29.0 - 39.4)	
	Stage III		20.3 (18.2 - 22.6)	21.5 (17.6 - 25.5)	15.3 (11.2 - 19.9)		23.4 (18.1 - 29.1)	13.3 (12.0 - 14.7)	
	Stage IV		4.2 (3.6 - 4.8)	3.8 (2.9 - 4.9)	2.3 (1.4 - 3.7)		2.1 (1.2 - 3.5)	2.7 (2.3 - 3.1)	
	Missing		17.0 (12.6 - 22.1)	9.1 (2.9 - 19.8)	12.1 (7.5 - 17.9)		8.9 (6.5 - 11.8)	7.5 (6.8 - 8.3)	
	Mapped SEER stage								
	Localised	26.5 (18.9 - 34.5)	48.0 (38.7 - 56.7)	52.1 (39.5 - 63.3)	38.9 (25.1 - 52.5)	*	35.5 (26.8 - 44.3)	41.8 (36.5 - 47.1)	
	Regional	21.6 (17.2 - 26.3)	23.7 (21.6 - 25.9)	27.7 (22.7 - 33.0)	19.5 (15.1 - 24.3)	17.1 (10.6 - 25.0)	23.1 (18.9 - 27.6)	17.5 (15.8 - 19.2)	
Distant	3.8 (2.6 - 5.3)	4.2 (3.6 - 4.9)	5.1 (4.1 - 6.3)	2.8 (1.8 - 4.2)	3.7 (2.3 - 5.6)	1.8 (1.1 - 2.8)	3.8 (3.3 - 4.2)		
Missing	16.9 (10.5 - 24.7)	13.4 (9.1 - 18.6)	11.7 (1.8 - 31.6)	10.1 (4.1 - 19.3)	16.1 (11.5 - 21.5)	10.3 (2.2 - 25.7)	7.3 (6.6 - 8.1)		

[‡]NS = Net Survival; CI = Confidence Interval

[†]Australia includes New South Wales; Canada includes Alberta, British Columbia, New Brunswick, Manitoba, Newfoundland, Nova Scotia, Ontario, Prince Edward Island, and Saskatchewan; Ireland (2010-2013); United Kingdom includes England, Northern Ireland, Scotland, and Wales

* <30 patients

^o Standard population used for age-standardisation is International Cancer Survival Standard (ICSS-1) derived in Corazziari et al. (2004)



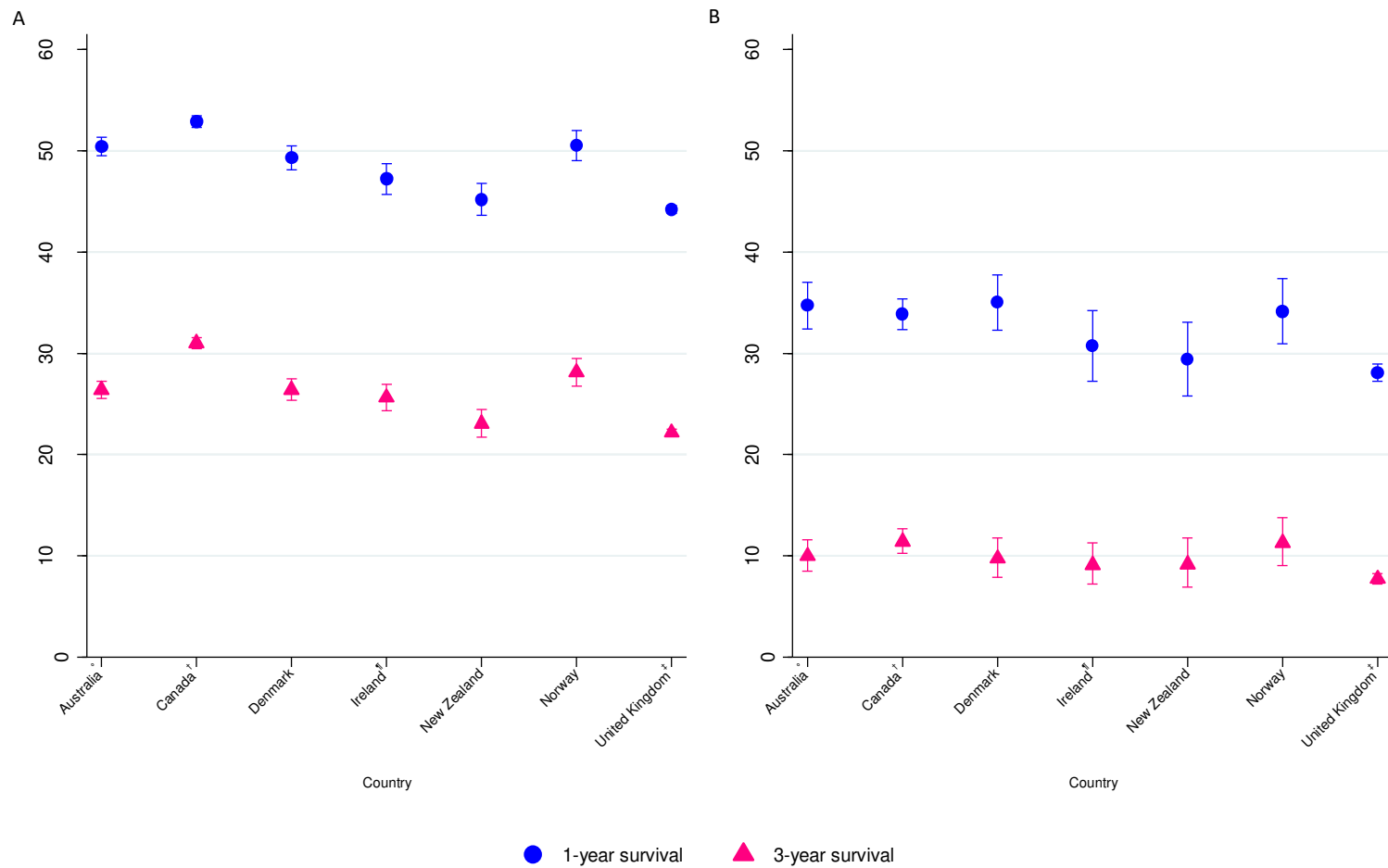
[†] Canadian provinces included: Alberta, British Columbia, New Brunswick, Manitoba, Newfoundland, Nova Scotia, Ontario, Prince Edward Island, and Saskatchewan

[‡] United Kingdom registries included: England, Northern Ireland, Scotland, and Wales

[°] Australia registries included: New South Wales

[¶] Ireland: 2010-2013

Supplementary Figure 2. Distribution of (imputed) stage at diagnosis of A) non-small cell lung carcinoma and B) small cell lung carcinoma for both sexes combined by country, 2010-2014



† Canadian provinces included: Alberta, British Columbia, New Brunswick, Manitoba, Newfoundland, Nova Scotia, Ontario, Prince Edward Island, and Saskatchewan

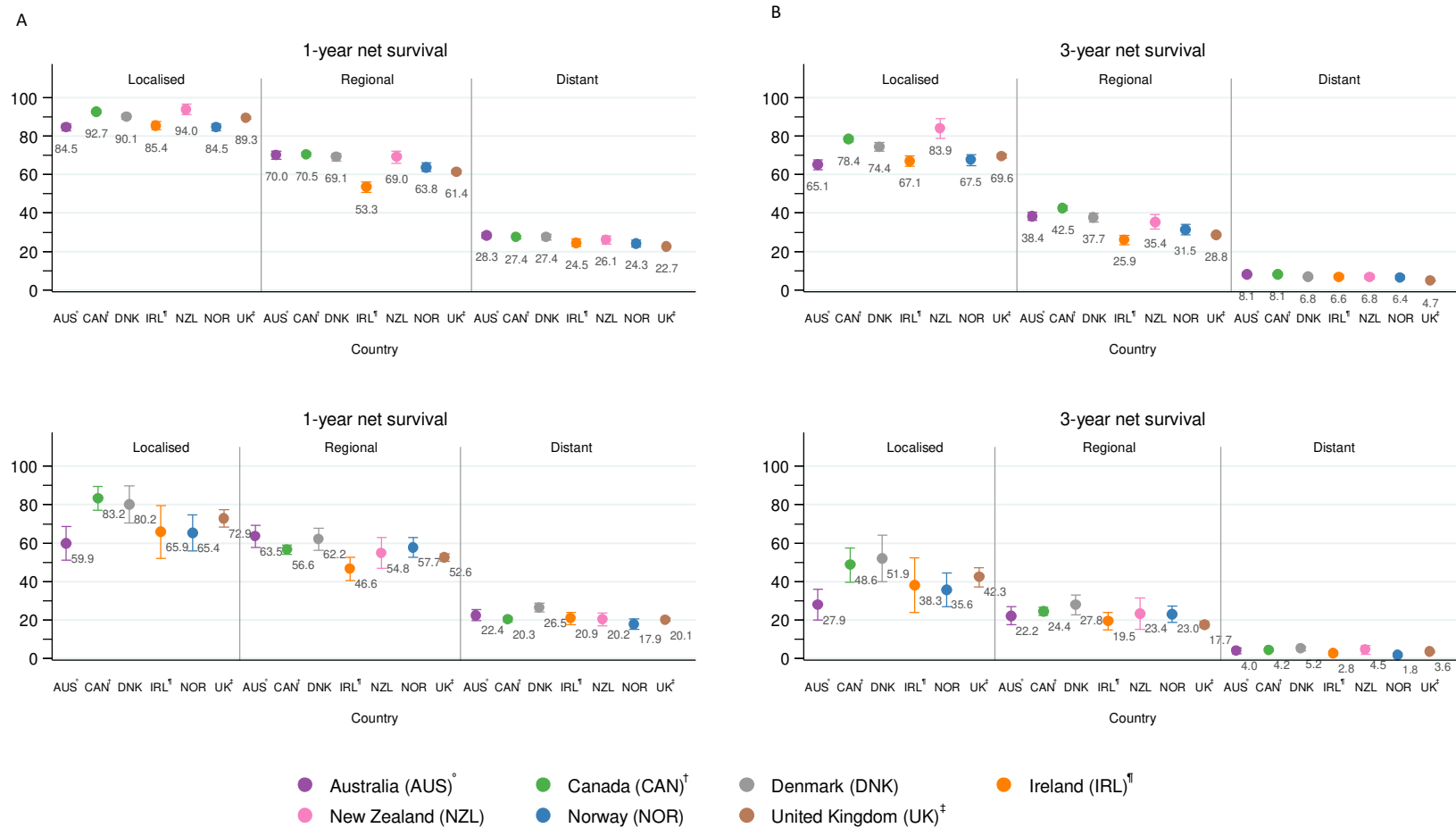
‡ United Kingdom registries included: England, Northern Ireland, Scotland, and Wales

° Australia registries included: New South Wales

¶ Ireland: 2010-2013

* Standard population used for age-standardisation is International Cancer Survival Standard (ICSS-1) derived in Corazziari et al. (2004)

Supplementary Figure 3. One- and three-year overall age-standardised* net survival of A) non-small cell lung carcinoma and B) small cell lung carcinoma by country for both sexes combined, 2010-2014



[†] Canadian provinces included: Alberta, British Columbia, New Brunswick, Manitoba, Newfoundland, Nova Scotia, Ontario, Prince Edward Island, and Saskatchewan

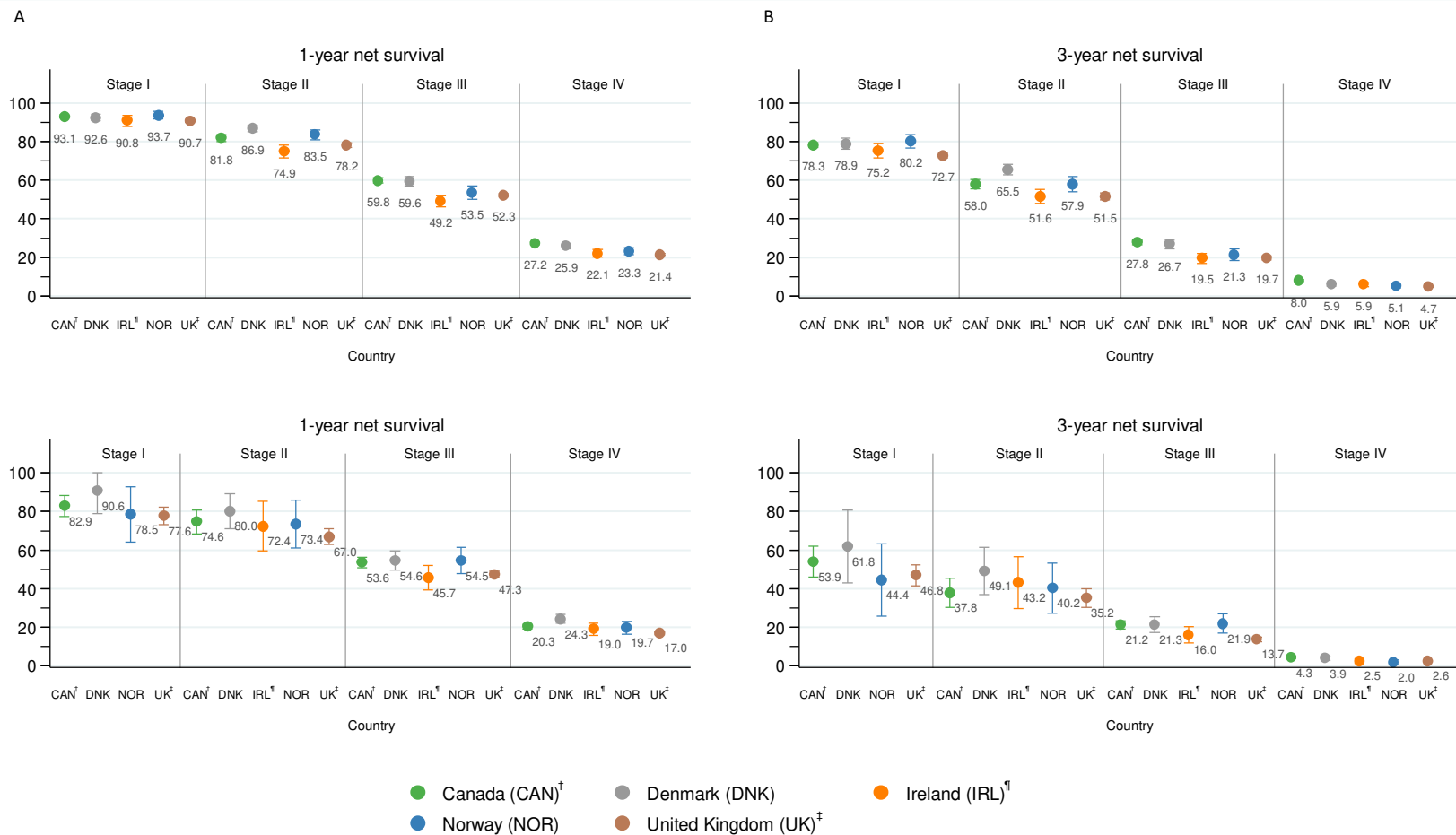
[‡] United Kingdom registries included: England, Northern Ireland, Scotland, and Wales

^o Australia registries included: New South Wales

[¶] Ireland: 2010-2013

* Standard population used for age-standardisation is International Cancer Survival Standard (ICSS-1) derived in Corazziari et al. (2004)

Supplementary Figure 4. One- and three-year age-standardised* net survival of A) non-small cell lung carcinoma and B) small cell lung carcinoma by (imputed) SEER stage and country for both sexes combined, 2010-2014



Canadian provinces included: Alberta, British Columbia, New Brunswick, Manitoba, Newfoundland, Nova Scotia, Ontario, Prince Edward Island, and Saskatchewan

[‡] United Kingdom registries included: England, Northern Ireland, Scotland, and Wales

[°] Australia registries included: New South Wales

[¶] Ireland: 2010-2013

* Standard population used for age-standardisation is International Cancer Survival Standard (ICSS-1) derived in Corazziari et al. (2004)

Supplementary Figure 5. One- and three-year age-standardised* net survival of A) non-small cell lung carcinoma and B) small cell lung carcinoma by (imputed) TNM stage and country for both sexes combined, 2010-2014

Supplementary Table 3. Number and proportion of patients with non-small cell lung carcinoma (NSCLC) and small cell lung carcinoma (SCLC) diagnosed during 2010-2014 both sexes combined by country and stage at diagnosis (TNM and SEER), before and after imputation

	TNM stage				Mapped SEER													
	NSCLC		%		SCLC		%		NSCLC		%		SCLC		%			
	Stage	Number	Median age at diagnosis	Observed	After imputation	Number	Median age at diagnosis	Observed	After imputation	Stage	Number	Median age at diagnosis	Observed	After imputation	Number	Median age at diagnosis	Observed	After imputation
Australia [†]	All patients									All patients	13,115	70 (63-77)			1,971	69 (62-77)		
	Missing									Missing	1,356	73 (65-81)	10.3		158	71 (62-78)	8.0	
	I									Localised	2,514	71 (65-78)	21.4	22.7	169	71 (61-78)	9.3	10.3
	II									Regional	3,145	70 (63-77)	26.7	26.9	436	69 (62-76)	24.0	23.4
	III									Distant	6,100	69 (61-77)	51.9	50.4	1,208	69 (62-76)	66.6	66.4
Canada [‡]	All patients	59,969	70 (62-77)			9,671	69 (61-75)			All patients	59,969	70 (62-77)			9,671	69 (61-75)		
	Missing	3,690	71 (63-78)	6.2		391	70 (63-76)	4.0		Missing	3,220	71 (62-78)	5.4		328	69 (63-76)	3.4	
	I	11,822	71 (64-77)	21.0	22.0	281	72 (64-78)	3.0	3.4	Localised	9,361	71 (64-77)	16.5	17.5	236	73 (65-78)	2.4	2.9
	II	5,714	71 (63-77)	10.2	10.2	315	70 (63-76)	3.4	3.6	Regional	19,833	70 (63-77)	34.9	35.0	2,595	68 (61-75)	26.8	28.9
	III	11,387	70 (62-76)	20.2	20.2	2,213	68 (61-75)	23.8	24.8	Distant	27,555	69 (61-77)	48.6	47.5	6,512	68 (61-75)	67.3	68.2
Denmark	All patients	15,590	69 (63-76)			2,991	69 (63-76)			All patients	15,590	69 (63-76)			2,991	69 (63-76)		
	Missing	396	73 (65-79)	2.5		84	72 (63-81)	2.8		Missing	176	72 (65-80)	1.1		34	74 (64-82)	1.1	
	I	1,348	70 (64-76)	8.9	9.8	46	68 (59-74)	1.6	1.8	Localised	2,915	70 (64-76)	18.9	20.3	102	70 (61-75)	3.4	3.6
	II	2,641	70 (64-76)	17.4	18.1	107	69 (64-76)	3.7	3.7	Regional	3,729	69 (63-76)	24.2	23.8	438	69 (62-76)	14.8	14.3
	III	3,200	69 (63-76)	20.6	19.7	598	69 (62-75)	20.6	19.8	Distant	8,770	69 (62-76)	56.9	55.9	2,417	69 (63-76)	81.7	82.0
Ireland [§]	All patients	6,006	69 (62-76)			1,089	67 (61-75)			All patients	6,006	69 (62-76)			1,089	67 (61-75)		
	Missing	803	73 (65-80)	13.4		175	71 (62-77)	16.1		Missing	406	73 (65-80)	6.8		84	73 (62-78)	7.7	
	I	644	70 (63-76)	12.4	12.5	20	65 (58-76)	2.2	2.6	Localised	1,283	70 (64-77)	22.9	23.7	50	67 (60-75)	5.0	5.6
	II	1,020	70 (63-76)	19.6	19.7	51	68 (63-80)	5.6	5.9	Regional	1,888	70 (63-76)	33.7	33.1	286	69 (62-75)	28.5	27.8
	III	1,405	69 (62-76)	27.0	27.0	242	67 (61-74)	26.5	27.1	Distant	2,429	68 (61-75)	43.4	43.3	669	67 (60-74)	66.6	66.6
New Zealand	All patients	2,134	68 (61-75)	41.0	40.8	601	67 (61-74)	65.8	64.4	All patients	6,619	69 (62-76)			1,185	68 (60-74)		
	Missing									Missing	2,085	71 (64-78)	31.5		321	68 (60-75)	27.1	
	I									Localised	532	68 (63-74)	11.7	12.7	6	70 (61-77)	0.7	0.8
	II									Regional	1,014	69 (61-74)	22.4	26.2	153	67 (59-74)	17.7	24.1
	III									Distant	2,988	68 (60-76)	65.9	61.1	705	67 (60-74)	81.6	75.1
Norway	All patients	9,414	69 (63-77)			2,097	69 (62-76)			All patients	9,414	69 (62-76)			2,097	69 (62-76)		
	Missing	2,062	70 (63-78)	21.9		684	68 (62-75)	32.6		Missing	202	73 (65-80)	2.1		65	73 (67-79)	3.1	
	I	1,103	69 (64-76)	15.0	15.2	42	69 (62-75)	3.0	3.0	Localised	2,234	70 (64-77)	24.3	23.8	165	70 (61-77)	8.1	8.0
	II	1,411	69 (64-76)	19.2	18.0	94	69 (62-76)	6.7	6.4	Regional	2,932	69 (63-76)	31.8	32.9	556	67 (61-74)	27.4	29.2
	III	1,694	70 (63-77)	23.0	21.9	353	67 (61-74)	25.0	25.1	Distant	4,046	69 (62-76)	43.9	43.3	1,311	69 (63-76)	64.5	62.8
United Kingdom [‡]	All patients	125,401	71 (64-77)			24,163	69 (62-76)			All patients	125,401	71 (64-77)			24,163	69 (62-76)		
	Missing	41,801	71 (64-78)	33.3		8,110	69 (62-76)	33.6		Missing	32,423	72 (64-79)	25.9		7,177	69 (62-76)	29.7	
	I	12,653	71 (65-77)	15.1	15.7	384	70 (63-77)	2.4	2.6	Localised	18,809	71 (65-77)	20.2	18.9	540	70 (63-77)	3.2	3.1
	II	9,186	71 (65-77)	11.0	10.7	528	70 (64-76)	3.3	3.2	Regional	24,785	71 (64-77)	26.7	25.7	3,119	69 (63-75)	18.4	18.0
	III	19,280	70 (64-77)	23.1	22.8	3,898	69 (62-75)	24.3	24.6	Distant	49,384	70 (63-77)	53.1	55.5	13,327	69 (62-76)	78.5	78.9
IV	42,481	70 (63-77)	50.8	50.8	11,243	69 (62-76)	70.0	69.6										

[†] Canadian provinces included: Alberta, British Columbia, New Brunswick, Manitoba, Newfoundland, Nova Scotia, Ontario, Prince Edward Island, and Saskatchewan[‡] United Kingdom registries included: England, Northern Ireland, Scotland, and Wales[§] Australia registries included: New South Wales[¶] Ireland: 2010-2013

Supplementary Table 4. Age-standardised* one- and three-year net survival (%) by (imputed) stage at diagnosis and country for non-small cell lung carcinoma patients diagnosed during 2010-2014, both sexes combined

Stage	Australia [†]	Canada [†]	Denmark	Ireland [†]	New Zealand	Norway	United Kingdom [†]
All patients	50.4 (49.5 - 51.3)	52.9 (52.3 - 53.5)	49.3 (48.1 - 50.5)	47.2 (45.7 - 48.7)	45.2 (43.6 - 46.7)	50.5 (49.0 - 52.0)	44.2 (43.8 - 44.6)
TNM Stage							
Stage I		93.1 (92.4 - 93.8)	92.6 (90.8 - 94.3)	90.8 (87.9 - 93.6)		93.7 (91.7 - 95.8)	90.7 (90.0 - 91.4)
Stage II		81.8 (80.1 - 83.6)	86.9 (85.2 - 88.6)	74.9 (71.4 - 78.3)		83.5 (80.9 - 86.2)	78.2 (77.0 - 79.4)
Stage III		59.8 (58.5 - 61.1)	59.6 (57.1 - 62.0)	49.2 (46.2 - 52.3)		53.5 (50.0 - 57.0)	52.3 (51.5 - 53.2)
Stage IV		27.2 (26.5 - 28.0)	25.9 (24.5 - 27.3)	22.1 (20.2 - 24.1)		23.3 (21.5 - 25.1)	21.4 (21.0 - 21.9)
Mapped SEER stage							
Localised	84.5 (82.7 - 86.3)	92.7 (91.8 - 93.5)	90.1 (88.7 - 91.5)	85.4 (83.2 - 87.5)	94.0 (91.2 - 96.7)	84.5 (82.6 - 86.5)	89.3 (88.7 - 89.9)
Regional	70.0 (68.1 - 72.0)	70.5 (69.5 - 71.4)	69.1 (67.1 - 71.1)	53.3 (50.6 - 56.1)	69.0 (65.8 - 72.2)	63.8 (61.5 - 66.1)	61.4 (60.5 - 62.2)
Distant	28.3 (26.9 - 29.8)	27.4 (26.6 - 28.1)	27.4 (26.1 - 28.8)	24.5 (22.5 - 26.4)	26.1 (24.0 - 28.2)	24.3 (22.4 - 26.1)	22.7 (22.3 - 23.1)
All patients	26.4 (25.6 - 27.2)	31.0 (30.4 - 31.6)	26.4 (25.4 - 27.5)	25.6 (24.4 - 27.0)	23.1 (21.7 - 24.4)	28.1 (26.8 - 29.5)	22.2 (21.9 - 22.5)
TNM Stage							
Stage I		78.3 (77.1 - 79.6)	78.9 (76.0 - 81.8)	75.2 (71.4 - 79.0)		80.2 (76.7 - 83.6)	72.7 (71.4 - 74.0)
Stage II		58.0 (55.6 - 60.3)	65.5 (62.7 - 68.2)	51.6 (48.0 - 55.3)		57.9 (53.9 - 61.9)	51.5 (49.7 - 53.4)
Stage III		27.8 (26.5 - 29.1)	26.7 (24.5 - 28.9)	19.5 (16.9 - 22.1)		21.3 (18.3 - 24.4)	19.7 (18.7 - 20.7)
Stage IV		8.0 (7.5 - 8.5)	5.9 (5.1 - 6.7)	5.9 (4.8 - 7.0)		5.1 (4.1 - 6.1)	4.7 (4.4 - 4.9)
Mapped SEER stage							
Localised	65.1 (62.6 - 67.6)	78.4 (77.1 - 79.7)	74.4 (72.2 - 76.5)	67.1 (64.4 - 69.9)	83.9 (78.7 - 89.2)	67.5 (64.7 - 70.3)	69.6 (68.6 - 70.5)
Regional	38.4 (36.3 - 40.5)	42.5 (41.4 - 43.7)	37.7 (35.4 - 40.0)	25.9 (23.5 - 28.4)	35.4 (31.6 - 39.2)	31.5 (28.8 - 34.2)	28.8 (28.0 - 29.6)
Distant	8.1 (7.2 - 8.9)	8.1 (7.5 - 8.6)	6.8 (6.0 - 7.5)	6.6 (5.5 - 7.7)	6.8 (5.6 - 7.9)	6.4 (5.3 - 7.5)	4.7 (4.4 - 4.9)

[†]NS = Net Survival; CI = Confidence Interval

[†]Australia includes New South Wales; Canada includes Alberta, British Columbia, New Brunswick, Manitoba, Newfoundland, Nova Scotia, Ontario, Prince Edward Island, and Saskatchewan; Ireland (2010-2013); United Kingdom includes England, Northern Ireland, Scotland, and Wales

* Standard population used for age-standardisation is International Cancer Survival Standard (ICSS-1) derived in Corazziari et al. (2004)

Supplementary Table 5. Age-standardised^o one- and three-year net survival (%) by (imputed) stage at diagnosis and country for small cell lung carcinoma patients diagnosed during 2010-2014, both sexes combined

	Stage	Australia [†]	Canada [†]	Denmark	Ireland [†]	New Zealand	Norway	United Kingdom [†]	
	All patients	34.7 (32.4 - 37.0)	33.9 (32.3 - 35.4)	35.0 (32.3 - 37.8)	30.7 (27.3 - 34.2)	29.4 (25.8 - 33.1)	34.1 (30.9 - 37.3)	28.1 (27.2 - 28.9)	
1-year NS (95% CI) [‡]	TNM Stage								
	Stage I		82.9 (77.6 - 88.3)	90.6 (79.0 - 100.0)	*		78.5 (64.1 - 93.0)	77.6 (73.0 - 82.1)	
	Stage II		74.6 (68.4 - 80.8)	80.0 (71.0 - 89.1)	72.4 (59.4 - 85.3)		73.4 (61.0 - 85.9)	67.0 (62.8 - 71.2)	
	Stage III		53.6 (51.0 - 56.2)	54.6 (49.6 - 59.6)	45.7 (39.4 - 52.1)		54.5 (47.8 - 61.3)	47.3 (45.7 - 49.0)	
	Stage IV		20.3 (19.0 - 21.5)	24.3 (22.0 - 26.6)	19.0 (15.7 - 22.2)		19.7 (16.5 - 22.9)	17.0 (16.2 - 17.7)	
	Mapped SEER stage								
	Localised	59.9 (51.1 - 68.7)	83.2 (77.1 - 89.4)	80.2 (70.4 - 89.9)	65.9 (52.1 - 79.7)	*	65.4 (56.1 - 74.8)	72.9 (68.5 - 77.4)	
	Regional	63.5 (57.8 - 69.2)	56.6 (54.2 - 59.0)	62.2 (56.4 - 67.9)	46.6 (40.5 - 52.7)	54.8 (46.9 - 62.8)	57.7 (52.7 - 62.8)	52.6 (50.6 - 54.6)	
	Distant	22.4 (19.6 - 25.3)	20.3 (19.1 - 21.5)	26.5 (24.3 - 28.7)	20.9 (17.7 - 24.1)	20.2 (16.9 - 23.5)	17.9 (15.3 - 20.5)	20.1 (19.4 - 20.8)	
	3-year NS (95% CI) [‡]	All patients	10.0 (8.5 - 11.6)	11.4 (10.2 - 12.7)	9.7 (7.9 - 11.8)	9.1 (7.2 - 11.3)	9.2 (6.9 - 11.7)	11.3 (9.0 - 13.8)	7.7 (7.2 - 8.2)
TNM Stage									
Stage I			53.9 (45.9 - 61.9)	61.8 (42.9 - 80.7)	*		44.4 (25.7 - 63.2)	46.8 (41.4 - 52.3)	
Stage II			37.8 (30.4 - 45.3)	49.1 (37.0 - 61.2)	43.2 (29.7 - 56.7)		40.2 (27.1 - 53.2)	35.2 (30.4 - 39.9)	
Stage III			21.2 (19.0 - 23.4)	21.3 (17.4 - 25.3)	16.0 (11.7 - 20.3)		21.9 (16.9 - 26.9)	13.7 (12.5 - 14.8)	
Stage IV			4.3 (3.7 - 4.9)	3.9 (2.8 - 4.9)	2.5 (1.3 - 3.7)		2.0 (0.8 - 3.2)	2.6 (2.2 - 2.9)	
Mapped SEER stage									
Localised		27.9 (20.0 - 35.9)	48.6 (39.7 - 57.5)	51.9 (39.9 - 64.0)	38.3 (24.1 - 52.4)	*	35.6 (26.8 - 44.4)	42.3 (37.2 - 47.3)	
Regional		22.2 (17.6 - 26.9)	24.4 (22.3 - 26.6)	27.8 (22.6 - 32.9)	19.5 (15.0 - 23.9)	23.4 (15.1 - 31.6)	23.0 (18.7 - 27.3)	17.7 (16.1 - 19.3)	
Distant		4.0 (2.5 - 5.4)	4.2 (3.6 - 4.8)	5.2 (4.1 - 6.2)	2.8 (1.6 - 4.0)	4.5 (2.3 - 6.6)	1.8 (1.0 - 2.7)	3.6 (3.2 - 4.0)	

[‡]NS = Net Survival; CI = Confidence Interval

[†]Australia includes New South Wales; Canada includes Alberta, British Columbia, New Brunswick, Manitoba, Newfoundland, Nova Scotia, Ontario, Prince Edward Island, and Saskatchewan; Ireland (2010-2013); United Kingdom includes England, Northern Ireland, Scotland, and Wales

* <30 patients

^o Standard population used for age-standardisation is International Cancer Survival Standard (ICSS-1) derived in Corazziari et al. (2004)

Supplementary Table 6. Number and proportion of patients with non-small cell lung carcinoma (NSCLC) and small cell lung carcinoma (SCLC) diagnosed during 2010-2014 by jurisdiction and stage at diagnosis (TNM and map SEER) for both sexes combined, before and after imputation

	TNM stage	NSCLC				SCLC				Mapped SEER								
		Stage	Number	%		Number	%		Stage	Number	%		Number	%				
				Median age at diagnosis	Observed		After imputation	Median age at diagnosis			Observed	After imputation		Median age at diagnosis	Observed	After imputation	Median age at diagnosis	Observed
Canada, Alberta	All patients	6,817	69 (62-76)			1,197	68 (61-76)			All patients	6,817	69 (62-76)			1,197	68 (61-76)		
	Missing	65	75 (67-82)	1.0		6	79 (77-84)	0.5		Missing	13	70 (60-84)	0.2		2	77 (76-77)	0.2	
	I	1,373	70 (63-77)	20.3	21.4	50	72 (62-78)	4.2	5.1	Localised	991	71 (64-77)	14.6	15.2	36	71 (63-76)	3.0	3.6
	II	616	71 (63-77)	9.1	9.3	44	72 (64-78)	3.7	4.4	Regional	2,288	70 (63-76)	33.6	34.0	313	68 (60-76)	26.2	29.8
	III	1,242	70 (63-76)	18.4	18.2	251	67 (60-74)	21.1	23.8	Distant	3,525	69 (61-76)	51.8	50.8	846	68 (61-76)	70.8	66.6
IV	3,521	69 (61-76)	52.1	51.0	846	68 (61-76)	71.0	66.7										
Canada, British Columbia	All patients	10,262	70 (63-78)			1,510	69 (62-76)			All patients	10,262	70 (63-78)			1,510	69 (62-76)		
	Missing	484	75 (67-82)	4.7		51	72 (64-78)	3.4		Missing	317	76 (69-82)	3.1		40	72 (65-78)	2.6	
	I	1,759	71 (64-77)	18.0	19.8	34	66 (61-76)	2.3	2.4	Localised	1,168	71 (64-78)	11.7	12.8	21	75 (62-79)	1.4	1.4 *
	II	892	71 (64-77)	9.1	9.2	52	69 (63-76)	3.6	3.1	Regional	3,740	71 (64-78)	37.6	37.5	474	69 (62-76)	32.2	32.2 *
	III	2,099	71 (63-78)	21.5	20.8	398	69 (62-76)	27.3	26.7	Distant	5,037	69 (61-77)	50.6	49.6	975	69 (62-76)	66.3	66.3 *
IV	5,028	69 (61-77)	51.4	50.2	975	69 (62-76)	66.8	67.9										
Canada, Manitoba	All patients	2,464	69 (62-76)			439	68 (61-74)			All patients	2,464	69 (62-76)			439	68 (61-74)		
	Missing	14	69 (54-79)	0.6		15	73 (66-79)	3.4		Missing	1	54 (54-54)	0.0		1	65 (65-65)	0.2	
	I	368	70 (63-76)	15.0	15.4	13	72 (67-77)	3.1	3.1 *	Localised	537	70 (63-76)	21.8	23.0	19	74 (69-77)	4.3	4.3 *
	II	522	70 (64-76)	21.3	19.5	22	73 (69-77)	5.2	5.2 *	Regional	679	70 (62-76)	27.6	26.1	103	70 (62-76)	23.5	23.5 *
	III	452	69 (61-77)	18.4	19.0	105	68 (59-74)	24.8	24.8 *	Distant	1,247	67 (60-75)	50.6	51.0	316	67 (60-74)	72.1	72.1 *
IV	1,108	67 (60-75)	45.2	46.1	284	67 (60-74)	67.0	67.0 *										
Canada, New Brunswick	All patients	2,389	69 (62-76)			439	68 (60-74)			All patients	2,389	69 (62-76)			439	68 (60-74)		
	Missing	26	72 (67-79)	1.1		5	59 (52-71)	1.1		Missing	4	75 (72-84)	0.2		2	56 (52-59)	0.5	
	I	672	70 (63-77)	28.4	27.9	12	71 (66-74)	2.8	2.8 *	Localised	496	70 (64-77)	20.8	21.2	9	70 (68-75)	2.1	2.1 *
	II	252	70 (64-75)	10.7	10.7	27	66 (59-71)	6.2	6.2 *	Regional	944	69 (62-76)	39.6	38.5	142	67 (60-73)	32.5	32.5 *
	III	494	68 (61-76)	20.9	20.8	109	67 (60-74)	25.1	25.1 *	Distant	945	68 (61-75)	39.6	40.4	286	68 (61-74)	65.4	65.4 *
IV	945	68 (61-75)	40.0	40.6	286	68 (61-74)	65.9	65.9 *										
Canada, Newfoundland	All patients	1,420	68 (62-74)			271	67 (60-73)			All patients	1,420	68 (62-74)			271	67 (60-73)		
	Missing	22	70 (64-79)	1.5		14	69 (58-73)	5.2		Missing	7	77 (68-83)	0.5		1	68 (68-68)	0.4	
	I	248	70 (64-76)	17.7	18.0	10	77 (69-81)	3.9	3.9 *	Localised	302	70 (64-76)	21.4	23.5	13	76 (68-79)	4.8	4.8 *
	II	218	69 (63-75)	15.6	15.9	8	68 (55-71)	3.1	3.1 *	Regional	457	68 (62-74)	32.3	28.9	68	68 (58-72)	25.2	25.2 *
	III	324	67 (61-73)	23.2	22.1	59	69 (60-74)	23.0	23.0 *	Distant	654	67 (60-74)	46.3	47.6	189	67 (60-72)	70.0	70.0 *
IV	608	67 (60-74)	43.5	44.0	180	67 (60-72)	70.0	70.0 *										
Canada, Nova Scotia	All patients	2,890	69 (62-76)			507	68 (61-75)			All patients	2,890	69 (62-76)			507	68 (61-75)		
	Missing	26	76 (68-86)	0.9		1	73 (73-73)	0.2		Missing	12	75 (69-87)	0.4		1	73 (73-73)	0.2	
	I	740	70 (63-76)	25.8	26.8	9	73 (65-78)	1.8	1.8 *	Localised	636	70 (63-76)	22.1	23.3	8	71 (63-77)	1.6	1.6 *
	II	273	71 (64-76)	9.5	9.5	12	67 (64-72)	2.4	2.4 *	Regional	929	70 (63-76)	32.3	31.8	109	68 (61-76)	21.5	21.5 *
	III	538	69 (63-76)	18.8	18.6	96	68 (61-76)	19.0	19.0 *	Distant	1,313	68 (61-75)	45.6	44.9	389	68 (61-75)	76.9	76.9 *
IV	1,313	68 (61-75)	45.8	45.2	389	68 (61-75)	76.9	76.9 *										
Canada, Ontario	All patients	30,975	70 (62-77)			4,739	69 (61-75)			All patients	30,975	70 (62-77)			4,739	69 (61-75)		
	Missing	3,030	70 (62-78)	9.8		292	69 (62-76)	6.2		Missing	2,856	70 (62-78)	9.2		279	69 (62-75)	5.9	
	I	6,130	71 (64-77)	21.9	23.0	144	73 (64-79)	3.2	3.5	Localised	4,831	71 (64-77)	17.2	18.3	121	73 (65-79)	2.7	2.9
	II	2,718	70 (63-77)	9.7	9.9	133	70 (64-76)	3.0	3.4	Regional	9,886	70 (63-77)	35.2	35.6	1,250	68 (61-75)	28.0	29.9
	III	5,695	69 (62-76)	20.4	20.7	1,081	68 (61-74)	24.3	25.7	Distant	13,402	69 (61-77)	47.7	46.1	2,027	68 (61-76)	69.3	67.2
IV	13,402	69 (61-77)	48.0	46.5	3,089	68 (61-76)	69.5	67.4										
Canada, Prince Edward Island	All patients	400	68 (62-75)			81	70 (64-76)			All patients	400	68 (62-75)			81	70 (64-76)		
	Missing	6	77 (70-83)	1.5		1	70 (70-70)	1.2		Missing	4	77 (57-80)	1.0		1	70 (70-70)	1.2	
	I	74	71 (62-76)	18.8	19.6	3	77 (73-77)	3.8	3.8 *	Localised	64	72 (62-77)	16.2	17.5	2	75 (73-77)	2.5	2.5 *
	II	36	65 (61-75)	9.1	8.6	6	76 (60-78)	7.5	7.5 *	Regional	142	69 (63-74)	35.9	34.2	16	67 (63-77)	20.0	20.0 *
	III	94	70 (64-74)	23.9	22.9	9	67 (63-68)	11.3	11.3 *	Distant	190	67 (61-75)	48.0	48.3	62	71 (64-75)	77.5	77.5 *
IV	190	67 (61-75)	48.2	48.9	62	71 (64-75)	77.5	77.5 *										
Canada, Saskatchewan	All patients	2,352	71 (64-77)			488	68 (61-74)			All patients	2,352	71 (64-77)			488	68 (61-74)		
	Missing	17	74 (71-81)	0.7		6	71 (58-79)	1.2		Missing	6	76 (69-82)	0.3		1	58 (58-58)	0.2	
	I	458	70 (64-76)	19.6	18.8	6	72 (65-76)	1.2	1.2 *	Localised	336	69 (64-76)	14.3	14.3	7	73 (66-75)	1.4	1.4 *
	II	187	73 (68-78)	8.0	8.1	11	71 (65-81)	2.3	2.3 *	Regional	768	71 (64-77)	32.7	32.8	120	70 (60-77)	24.6	24.6 *
	III	449	71 (63-76)	19.2	19.9	105	69 (60-77)	21.8	21.8 *	Distant	1,242	70 (63-77)	52.9	52.9	360	67 (61-73)	73.9	73.9 *
IV	1,241	70 (63-77)	53.1	53.2	360	67 (61-73)	74.7	74.7 *										
UK, England	All patients	102,433	71 (64-78)			18,904	69 (63-76)			All patients	102,433	71 (64-78)			18,904	69 (63-76)		
	Missing	39,619	71 (64-78)	38.7		7,406	69 (62-76)	39.2		Missing	30,740	72 (64-79)	30.0		6,603	69 (62-76)	34.9	
	I	10,287	72 (65-78)	16.4	16.7	305	71 (64-78)	2.7	2.7	Localised	15,022	71 (65-77)	21.0	19.0	401	71 (64-77)	3.3	3.1
	II	6,141	72 (65-78)	9.8	9.6	369	70 (64-76)	3.2	3.2	Regional	18,089	71 (64-77)	25.2	24.3	2,027	69 (63-76)	16.5	16.2
	III	14,130	71 (64-77)	22.5	22.2	2,790	69 (62-75)	24.3	24.2	Distant	38,582	70 (63-77)	53.8	56.7	9,873	69 (62-76)	80.3	80.7
IV	32,256	70 (63-77)	51.4	51.5	8,034	69 (63-76)	69.9	69.9										
UK, Northern Ireland	All patients	3,085	69 (62-76)			711	68 (61-74)			All patients	3,085	69 (62-76)			711	68 (61-74)		
	Missing	135	73 (65-81)	4.4		116	69 (63-77)	16.3		Missing	103	73 (65-80)	3.3		107	69 (64-77)	15.0	
	I	424	71 (64-76)	14.4	15.7	16	68 (63-75)	2.7	3.4	Localised	434	71 (64-76)	14.6	15.7	17	68 (60-75)	2.8	3.5
	II	320	70 (63-77)	10.8	10.6	25	69 (63-77)	4.2	4.4	Regional	1,135	69 (63-76)	38.1	37.8	188	68 (60-74)	31.1	32.7
	III	799	69 (62-76)	27.1	26.8	156	66 (60-74)	26.2	27.8	Distant	1,413	68 (61-75)	47.4	46.6	399	67 (61-73)	66.1	63.9
IV	1,407	68 (61-75)	47.7	46.9	398	67 (61-73)	66.9	64.3										
UK, Scotland	All patients	13,466	70 (63-76)			3,182	69 (62-75)			All patients	13,466	70 (63-76)						

Supplementary Table 7. Age-standardised^o one- and three-year net survival (%) by stage at diagnosis (without imputation, presenting results of those with missing stage information) and jurisdiction for non-small cell lung carcinoma patients diagnosed during 2010-2014, both sexes combined

Stage	Canada, Alberta	Canada, British Columbia	Canada, Manitoba	Canada, New Brunswick	Canada, Newfoundland and Labrador	Canada, Nova Scotia	Canada, Ontario	Canada, Prince Edward Island	Canada, Saskatchewan	UK, England	UK, Northern Ireland	UK, Scotland	UK, Wales
All patients	52.2 (50.7 - 53.7)	51.6 (50.2 - 53.0)	53.3 (50.5 - 56.0)	58.5 (55.9 - 61.0)	53.1 (48.7 - 57.4)	52.4 (49.8 - 54.8)	53.1 (52.2 - 53.9)	47.5 (39.7 - 54.9)	52.8 (50.1 - 55.5)	44.2 (43.8 - 44.6)	42.2 (39.7 - 44.7)	45.3 (44.0 - 46.5)	42.2 (40.2 - 44.1)
TNM Stage													
Stage I	93.7 (91.7 - 95.2)	93.6 (92.0 - 94.8)	97.8 (93.8 - 99.2)	92.9 (89.9 - 95.0)	89.9 (83.4 - 93.9)	93.9 (91.0 - 95.9)	93.0 (92.0 - 93.9)	90.2 (77.6 - 95.9)	90.4 (85.9 - 93.6)	90.8 (90.0 - 91.5)	84.1 (78.7 - 88.2)	95.0 (92.8 - 96.6)	88.1 (85.1 - 90.6)
Stage II	82.4 (78.4 - 85.8)	80.6 (76.5 - 84.1)	87.8 (83.6 - 91.0)	86.1 (79.9 - 90.6)	79.5 (67.0 - 87.8)	79.3 (72.5 - 84.7)	81.1 (78.0 - 83.8)	85.4 (61.4 - 95.0)	81.2 (73.0 - 87.1)	76.5 (75.0 - 78.0)	78.6 (72.6 - 83.5)	85.5 (83.6 - 87.3)	75.2 (70.5 - 79.2)
Stage III	59.6 (56.1 - 62.8)	57.6 (54.0 - 61.1)	63.4 (57.9 - 68.4)	62.0 (56.6 - 66.9)	60.9 (50.5 - 69.8)	61.6 (56.2 - 66.6)	58.6 (56.6 - 60.6)	54.3 (38.9 - 67.3)	67.6 (62.0 - 72.6)	51.7 (50.7 - 52.8)	48.5 (43.6 - 53.3)	58.4 (55.7 - 60.9)	50.9 (46.5 - 55.1)
Stage IV	24.7 (23.0 - 26.5)	29.2 (27.5 - 31.0)	21.9 (18.8 - 25.1)	21.6 (18.5 - 24.8)	27.4 (22.4 - 32.6)	21.6 (18.9 - 24.4)	27.5 (26.4 - 28.6)	18.2 (11.8 - 25.7)	28.5 (25.4 - 31.7)	22.7 (22.2 - 23.2)	18.4 (15.8 - 21.2)	18.5 (17.2 - 19.8)	20.0 (17.8 - 22.2)
Missing	44.1 (20.8 - 65.2)	54.3 (47.3 - 60.8)	*	*	*	*	50.8 (48.3 - 53.2)	*	*	41.1 (40.1 - 42.0)	43.1 (30.6 - 55.0)	39.3 (34.1 - 44.5)	37.5 (29.3 - 45.7)
Mapped SEER stage													
Localised	93.8 (91.4 - 95.6)	93.7 (91.7 - 95.2)	96.4 (93.4 - 98.1)	93.1 (89.7 - 95.4)	89.8 (84.0 - 93.6)	94.1 (90.9 - 96.2)	92.4 (91.0 - 93.6)	89.0 (75.7 - 95.2)	89.3 (82.5 - 93.6)	90.3 (89.6 - 90.9)	84.1 (78.7 - 88.2)	91.7 (90.2 - 93.0)	88.1 (85.1 - 90.6)
Regional	71.9 (69.5 - 74.1)	69.9 (67.6 - 72.1)	74.8 (70.5 - 78.5)	76.0 (72.6 - 79.1)	66.7 (58.3 - 73.8)	70.9 (67.2 - 74.3)	69.0 (67.4 - 70.5)	64.0 (52.0 - 73.7)	74.4 (70.4 - 78.0)	62.8 (61.8 - 63.8)	56.8 (52.6 - 60.8)	65.5 (63.2 - 67.7)	57.7 (54.3 - 60.9)
Distant	24.8 (23.1 - 26.5)	29.3 (27.6 - 31.0)	24.7 (21.7 - 27.9)	25.5 (22.2 - 28.9)	29.4 (24.4 - 34.7)	21.6 (18.9 - 24.4)	27.5 (26.4 - 28.6)	19.4 (10.7 - 29.9)	31.1 (27.9 - 34.4)	24.4 (23.9 - 24.9)	18.5 (15.9 - 21.2)	20.6 (19.3 - 21.9)	20.0 (17.8 - 22.2)
Missing	*	42.7 (32.9 - 52.2)	*	*	*	*	50.6 (48.1 - 53.1)	*	*	33.1 (32.0 - 34.2)	44.0 (29.2 - 57.8)	25.9 (21.3 - 30.7)	37.5 (29.3 - 45.7)
1-year NS (95% CI)[†]													
All patients	30.6 (29.1 - 32.1)	29.3 (27.9 - 30.7)	34.7 (32.0 - 37.3)	37.7 (34.8 - 40.6)	29.1 (25.0 - 33.4)	32.1 (29.8 - 34.4)	30.9 (30.1 - 31.8)	20.9 (14.5 - 28.2)	30.5 (27.8 - 33.2)	22.3 (21.9 - 22.6)	20.7 (18.7 - 22.7)	22.8 (21.8 - 23.8)	20.5 (18.9 - 22.2)
TNM Stage													
Stage I	75.8 (72.6 - 78.6)	77.9 (75.3 - 80.3)	83.9 (77.3 - 88.6)	76.7 (72.0 - 80.7)	76.5 (66.0 - 84.1)	74.3 (69.9 - 78.2)	79.6 (77.9 - 81.2)	71.7 (55.3 - 82.9)	79.4 (73.8 - 84.0)	71.5 (69.9 - 73.0)	63.9 (57.5 - 69.6)	78.7 (75.0 - 81.8)	68.7 (64.3 - 72.6)
Stage II	57.7 (52.5 - 62.5)	57.0 (51.9 - 61.8)	69.4 (64.0 - 74.2)	56.4 (48.2 - 63.8)	57.6 (44.5 - 68.7)	55.7 (47.9 - 62.7)	57.1 (54.0 - 60.2)	31.0 (13.1 - 50.9)	55.7 (44.8 - 65.3)	50.8 (48.8 - 52.7)	50.0 (42.8 - 56.7)	57.7 (54.6 - 60.6)	44.8 (38.3 - 51.0)
Stage III	26.2 (23.2 - 29.2)	26.7 (23.5 - 29.9)	28.6 (20.8 - 37.0)	32.1 (27.0 - 37.3)	26.6 (19.1 - 34.8)	29.7 (24.2 - 35.4)	26.7 (24.7 - 28.8)	16.8 (7.8 - 28.7)	31.3 (25.9 - 36.7)	19.9 (18.9 - 21.0)	18.4 (14.6 - 22.5)	23.8 (21.2 - 26.5)	19.8 (16.3 - 23.4)
Stage IV	7.7 (6.7 - 8.8)	9.4 (8.1 - 10.7)	6.1 (4.5 - 8.1)	6.6 (4.8 - 8.8)	4.5 (1.4 - 10.6)	7.2 (5.6 - 9.0)	7.8 (7.0 - 8.6)	5.2 (2.3 - 9.8)	7.8 (6.0 - 9.8)	5.4 (5.1 - 5.8)	3.3 (2.2 - 4.7)	3.5 (2.9 - 4.2)	5.0 (3.7 - 6.4)
Missing	28.9 (12.6 - 47.5)	39.8 (33.9 - 45.7)	*	*	*	*	29.5 (27.4 - 31.6)	*	*	20.2 (19.6 - 20.9)	30.7 (20.5 - 41.5)	14.4 (11.0 - 18.2)	19.4 (14.0 - 25.4)
Mapped SEER stage													
Localised	76.5 (72.7 - 79.8)	79.1 (75.9 - 81.9)	83.0 (77.4 - 87.3)	75.7 (70.2 - 80.4)	77.1 (67.7 - 84.1)	74.4 (69.6 - 78.6)	78.9 (76.9 - 80.8)	74.3 (53.5 - 86.9)	79.1 (71.7 - 84.7)	73.4 (72.3 - 74.5)	63.7 (57.4 - 69.3)	70.7 (68.0 - 73.3)	68.7 (64.3 - 72.6)
Regional	43.2 (40.6 - 45.7)	42.7 (40.1 - 45.2)	46.3 (37.7 - 54.5)	48.8 (43.8 - 53.5)	36.3 (29.2 - 43.5)	41.7 (36.5 - 46.7)	41.1 (39.3 - 42.9)	23.8 (15.0 - 33.7)	46.7 (42.3 - 51.0)	33.1 (32.1 - 34.2)	26.7 (22.9 - 30.6)	31.7 (29.2 - 34.3)	26.3 (23.1 - 29.5)
Distant	7.7 (6.7 - 8.9)	9.4 (8.1 - 10.7)	7.8 (6.0 - 9.8)	8.6 (6.1 - 11.7)	5.2 (1.7 - 11.8)	7.2 (5.6 - 9.0)	7.8 (7.0 - 8.6)	4.3 (0.7 - 13.2)	9.0 (6.6 - 11.8)	6.0 (5.6 - 6.3)	3.4 (2.3 - 4.8)	4.1 (3.5 - 4.8)	5.0 (3.7 - 6.4)
Missing	*	31.1 (23.3 - 39.1)	*	*	*	*	29.3 (27.2 - 31.4)	*	*	12.1 (11.5 - 12.6)	33.4 (20.9 - 46.3)	9.0 (6.8 - 11.5)	19.4 (14.0 - 25.4)

[†]NS = Net Survival; CI = Confidence Interval

* <30 patients

^o Standard population used for age-standardisation is International Cancer Survival Standard (ICSS-1) derived in Corazzari et al. (2004)

Supplementary Table 8. Age-standardised* one- and three-year net survival (%) by (imputed) stage at diagnosis and jurisdiction for non-small cell lung carcinoma patients diagnosed during 2010-2014, both sexes combined

Stage	Canada, Alberta	Canada, British Columbia	Canada, Manitoba	Canada, New Brunswick	Canada, Newfoundland and Labrador	Canada, Nova Scotia	Canada, Ontario	Canada, Prince Edward Island	Canada, Saskatchewan	UK, England	UK, Northern Ireland	UK, Scotland	UK, Wales
All patients	52.2 (50.7 - 53.7)	51.6 (50.2 - 53.0)	53.3 (50.5 - 56.0)	58.5 (55.9 - 61.0)	53.1 (48.7 - 57.4)	52.4 (49.8 - 54.8)	53.1 (52.2 - 53.9)	47.5 (39.7 - 54.9)	52.8 (50.1 - 55.5)	44.2 (43.8 - 44.6)	42.2 (39.7 - 44.7)	45.3 (44.0 - 46.5)	42.2 (40.2 - 44.1)
TNM Stage													
Stage I	94.2 (92.6 - 95.8)	93.6 (92.2 - 95.0)	97.7 (95.4 - 100.0)	92.8 (90.2 - 95.3)	89.9 (84.9 - 95.0)	93.9 (91.4 - 96.3)	92.8 (91.9 - 93.8)	89.9 (81.4 - 98.4)	90.4 (86.7 - 94.2)	90.7 (90.0 - 91.5)	84.2 (79.6 - 88.8)	94.8 (92.9 - 96.7)	87.9 (85.2 - 90.7)
Stage II	83.2 (79.6 - 86.9)	80.9 (77.2 - 84.6)	87.7 (84.0 - 91.4)	86.1 (80.8 - 91.4)	79.4 (69.2 - 89.6)	79.3 (73.2 - 85.4)	80.8 (77.8 - 83.7)	85.3 (70.1 - 100.0)	81.1 (74.2 - 88.1)	76.7 (75.3 - 78.0)	79.2 (73.9 - 84.5)	85.1 (83.3 - 86.9)	75.1 (70.8 - 79.3)
Stage III	61.8 (58.6 - 65.1)	58.0 (54.6 - 61.4)	63.1 (57.8 - 68.3)	62.0 (56.8 - 67.1)	60.9 (51.2 - 70.6)	61.6 (56.4 - 66.8)	58.6 (56.6 - 60.6)	55.6 (41.4 - 69.8)	67.6 (62.3 - 72.9)	52.0 (51.0 - 53.1)	48.8 (43.9 - 53.7)	58.1 (55.5 - 60.7)	50.5 (46.2 - 54.9)
Stage IV	26.8 (25.0 - 28.6)	29.2 (27.5 - 30.9)	21.7 (18.6 - 24.9)	21.6 (18.5 - 24.7)	27.4 (22.3 - 32.5)	21.5 (18.8 - 24.3)	27.5 (26.4 - 28.6)	18.9 (11.9 - 25.9)	28.5 (25.4 - 31.7)	22.1 (21.6 - 22.6)	18.4 (15.7 - 21.0)	18.2 (16.9 - 19.5)	19.8 (17.7 - 21.9)
Mapped SEER stage													
Localised	94.4 (92.6 - 96.2)	93.6 (91.9 - 95.4)	96.4 (94.2 - 98.6)	93.1 (90.4 - 95.9)	89.8 (85.2 - 94.5)	94.0 (91.5 - 96.6)	92.2 (91.0 - 93.4)	89.0 (80.0 - 98.0)	89.4 (84.0 - 94.7)	89.1 (88.4 - 89.9)	84.1 (79.4 - 88.8)	91.4 (89.9 - 92.8)	88.2 (85.5 - 90.9)
Regional	73.5 (71.3 - 75.6)	69.8 (67.5 - 72.0)	74.8 (70.8 - 78.8)	76.0 (72.8 - 79.3)	66.7 (58.9 - 74.4)	70.9 (67.3 - 74.4)	69.0 (67.6 - 70.5)	64.9 (54.4 - 75.3)	74.5 (70.6 - 78.3)	61.7 (60.7 - 62.6)	57.0 (52.9 - 61.1)	65.0 (62.8 - 67.2)	57.4 (54.0 - 60.7)
Distant	26.8 (24.9 - 28.6)	29.0 (27.3 - 30.7)	24.7 (21.6 - 27.8)	25.5 (22.1 - 28.8)	29.6 (24.5 - 34.8)	21.6 (18.8 - 24.3)	27.4 (26.4 - 28.5)	19.4 (9.6 - 29.3)	31.0 (27.8 - 34.3)	23.3 (22.8 - 23.8)	18.4 (15.7 - 21.1)	20.1 (18.8 - 21.4)	19.7 (17.6 - 21.9)
All patients	30.6 (29.1 - 32.1)	29.3 (27.9 - 30.7)	34.7 (32.0 - 37.3)	37.7 (34.8 - 40.6)	29.1 (25.0 - 33.4)	32.1 (29.8 - 34.4)	30.9 (30.1 - 31.8)	20.9 (14.5 - 28.2)	30.5 (27.8 - 33.2)	22.3 (21.9 - 22.6)	20.7 (18.7 - 22.7)	22.8 (21.8 - 23.8)	20.5 (18.9 - 22.2)
TNM Stage													
Stage I	76.4 (72.0 - 80.9)	78.5 (76.1 - 80.9)	83.9 (78.3 - 89.4)	76.0 (71.7 - 80.4)	75.9 (66.8 - 85.0)	74.3 (70.2 - 78.5)	79.8 (78.3 - 81.4)	71.2 (57.5 - 85.0)	79.2 (74.1 - 84.3)	72.8 (71.5 - 74.0)	64.6 (58.7 - 70.5)	77.8 (74.3 - 81.2)	68.7 (64.6 - 72.7)
Stage II	57.1 (50.7 - 63.5)	57.7 (53.0 - 62.3)	69.4 (64.3 - 74.6)	55.5 (47.7 - 63.3)	57.2 (45.1 - 69.4)	55.6 (48.1 - 63.0)	56.9 (53.1 - 60.7)	31.8 (11.8 - 51.7)	55.4 (45.1 - 65.7)	50.5 (48.5 - 52.5)	51.6 (44.7 - 58.6)	56.5 (53.5 - 59.4)	44.6 (38.3 - 51.0)
Stage III	28.7 (25.7 - 31.8)	27.3 (24.1 - 30.4)	28.5 (20.3 - 36.7)	31.3 (26.3 - 36.4)	25.9 (18.2 - 33.7)	29.8 (24.1 - 35.4)	27.0 (25.1 - 28.9)	17.1 (6.4 - 27.8)	31.1 (25.7 - 36.6)	19.7 (18.7 - 20.7)	18.9 (14.9 - 22.9)	22.8 (20.3 - 25.3)	19.7 (16.2 - 23.2)
Stage IV	8.7 (7.4 - 9.9)	9.6 (8.3 - 10.9)	6.1 (4.3 - 7.9)	6.6 (4.6 - 8.5)	4.4 (0.0 - 8.7)	7.1 (5.4 - 8.9)	7.3 (6.6 - 8.1)	5.3 (1.6 - 8.9)	7.7 (5.8 - 9.6)	5.0 (4.7 - 5.3)	3.4 (2.1 - 4.6)	3.2 (2.7 - 3.8)	4.9 (3.6 - 6.2)
Mapped SEER stage													
Localised	80.4 (77.3 - 83.5)	79.1 (76.2 - 82.0)	83.0 (78.1 - 87.8)	75.4 (70.4 - 80.4)	77.0 (68.9 - 85.1)	74.4 (69.9 - 78.9)	79.0 (77.1 - 80.9)	74.2 (57.7 - 90.6)	79.1 (72.7 - 85.6)	69.6 (68.4 - 70.8)	64.6 (58.7 - 70.5)	69.8 (67.2 - 72.4)	69.1 (65.0 - 73.1)
Regional	44.6 (41.9 - 47.4)	42.9 (40.4 - 45.4)	46.3 (37.8 - 54.8)	48.7 (43.9 - 53.6)	36.1 (28.9 - 43.2)	41.6 (36.5 - 46.7)	41.4 (39.7 - 43.0)	23.7 (14.6 - 32.8)	46.7 (42.4 - 51.1)	29.1 (28.2 - 29.9)	27.4 (23.6 - 31.3)	30.8 (28.3 - 33.2)	26.2 (23.0 - 29.3)
Distant	8.7 (7.5 - 10.0)	9.4 (8.2 - 10.7)	7.8 (5.9 - 9.7)	8.8 (6.0 - 11.7)	5.1 (0.3 - 9.9)	7.2 (5.4 - 8.9)	7.4 (6.7 - 8.1)	4.4 (0.0 - 10.4)	9.0 (6.4 - 11.5)	4.8 (4.5 - 5.0)	3.4 (2.2 - 4.7)	3.9 (3.3 - 4.5)	4.9 (3.6 - 6.2)

*NS = Net Survival; CI = Confidence Interval

* Standard population used for age-standardisation is International Cancer Survival Standard (ICSS-1) derived in Corazzari et al. (2004)

Supplementary Table 9. Age-standardised^o one- and three-year net survival (%) by stage at diagnosis (without imputation, presenting results of those with missing stage information) and jurisdiction for small cell lung carcinoma patients diagnosed during 2010-2014, both sexes combined

Stage	Canada, Alberta	Canada, British Columbia	Canada, Manitoba	Canada, New Brunswick	Canada, Newfoundland and Labrador	Canada, Nova Scotia	Canada, Ontario	Canada, Prince Edward Island	Canada, Saskatchewan	UK, England	UK, Northern Ireland	UK, Scotland	UK, Wales
All patients	34.6 (31.1 - 38.0)	31.0 (26.6 - 35.5)	31.4 (26.3 - 36.6)	33.8 (28.1 - 39.6)	32.6 (25.7 - 39.7)	25.2 (20.4 - 30.3)	34.4 (32.1 - 36.8)	31.9 (18.7 - 45.9)	34.2 (27.9 - 40.6)	28.5 (27.5 - 29.4)	23.7 (19.7 - 27.9)	28.0 (25.8 - 30.3)	24.8 (21.4 - 28.4)
TNM Stage													
Stage I	79.6 (63.7 - 89.1)	90.7 (68.9 - 97.5)	*	*	*	*	82.4 (72.6 - 88.9)	*	*	72.2 (57.1 - 82.8)	*	80.3 (54.3 - 92.4)	*
Stage II	77.3 (59.3 - 88.0)	77.5 (58.1 - 88.7)	*	*	*	*	71.8 (58.6 - 81.4)	*	*	69.0 (63.7 - 73.7)	*	67.7 (54.2 - 78.0)	39.8 (16.2 - 62.8)
Stage III	58.0 (50.4 - 64.8)	48.7 (42.5 - 54.6)	50.1 (38.3 - 60.8)	56.0 (42.2 - 67.8)	52.9 (33.3 - 69.2)	42.1 (29.8 - 53.8)	53.5 (47.9 - 58.8)	*	56.2 (43.7 - 66.9)	46.9 (44.4 - 49.3)	37.8 (28.4 - 47.1)	48.4 (43.7 - 53.0)	44.4 (37.9 - 50.7)
Stage IV	18.1 (15.0 - 21.3)	18.4 (15.5 - 21.6)	16.0 (11.3 - 21.4)	19.9 (14.5 - 26.0)	19.3 (12.9 - 26.7)	16.7 (12.6 - 21.2)	22.5 (20.0 - 25.2)	25.6 (13.3 - 39.8)	21.5 (16.4 - 27.2)	18.4 (17.4 - 19.5)	13.7 (9.5 - 18.7)	15.9 (14.0 - 18.0)	13.6 (10.9 - 16.6)
Missing	*	25.7 (10.2 - 44.6)	*	*	*	*	35.2 (26.4 - 44.2)	*	*	27.8 (25.7 - 30.0)	22.3 (13.6 - 32.3)	34.3 (27.8 - 41.0)	30.0 (18.5 - 42.3)
Mapped SEER stage													
Localised	85.6 (64.3 - 94.6)	*	*	*	*	*	80.8 (69.3 - 88.3)	*	*	69.7 (59.8 - 77.5)	*	65.9 (52.7 - 76.2)	*
Regional	60.9 (54.3 - 66.8)	54.7 (47.7 - 61.3)	56.9 (45.4 - 66.8)	60.5 (47.8 - 71.0)	56.8 (36.8 - 72.7)	47.1 (35.4 - 58.0)	56.4 (51.4 - 61.1)	63.2 (31.8 - 83.2)	58.4 (46.5 - 68.5)	53.8 (50.8 - 56.6)	39.7 (30.9 - 48.3)	51.0 (45.7 - 56.1)	44.0 (36.5 - 51.2)
Distant	18.1 (15.0 - 21.3)	17.1 (11.7 - 23.3)	19.2 (14.3 - 24.7)	19.9 (14.5 - 26.0)	20.8 (14.3 - 28.3)	16.7 (12.6 - 21.2)	22.5 (20.0 - 25.2)	24.6 (11.6 - 40.1)	21.5 (16.4 - 27.2)	21.7 (20.7 - 22.8)	14.0 (9.7 - 19.0)	19.4 (17.4 - 21.4)	13.1 (10.1 - 16.5)
Missing	*	11.5 (2.0 - 30.5)	*	*	*	*	34.0 (25.2 - 43.0)	*	*	28.6 (26.3 - 30.9)	19.6 (11.0 - 30.1)	33.9 (25.7 - 42.3)	29.9 (16.8 - 44.2)
All patients	11.1 (8.6 - 13.9)	10.9 (8.0 - 14.4)	10.9 (7.8 - 14.6)	13.0 (9.4 - 17.2)	11.4 (6.8 - 17.3)	7.7 (5.0 - 11.2)	12.2 (10.4 - 14.1)	10.5 (3.5 - 21.9)	9.5 (5.9 - 14.1)	7.8 (7.2 - 8.4)	6.2 (4.0 - 9.2)	7.7 (6.5 - 9.0)	7.7 (5.8 - 10.1)
TNM Stage													
Stage I	39.9 (23.1 - 56.3)	59.3 (37.2 - 75.8)	*	*	*	*	62.5 (49.4 - 73.2)	*	*	42.0 (32.0 - 51.7)	*	51.5 (24.3 - 73.3)	*
Stage II	50.8 (30.0 - 68.3)	37.4 (20.3 - 54.5)	*	*	*	*	38.2 (25.4 - 50.8)	*	*	34.8 (28.0 - 41.8)	*	30.1 (20.0 - 41.0)	32.7 (12.6 - 54.7)
Stage III	20.4 (14.7 - 26.9)	17.6 (13.1 - 22.6)	15.7 (8.9 - 24.4)	27.1 (16.5 - 38.8)	18.9 (7.2 - 34.9)	15.9 (8.7 - 25.1)	20.8 (16.0 - 26.0)	29.3 (3.4 - 64.0)	23.3 (14.0 - 34.0)	13.1 (10.9 - 15.4)	11.0 (5.9 - 18.0)	14.1 (10.9 - 17.7)	11.1 (7.5 - 15.4)
Stage IV	3.5 (2.3 - 5.1)	4.2 (2.8 - 6.2)	4.5 (2.3 - 7.7)	4.1 (1.9 - 7.6)	7.4 (3.4 - 13.4)	3.3 (1.7 - 5.9)	4.7 (3.6 - 5.9)	3.6 (0.2 - 16.2)	3.9 (1.8 - 7.1)	3.5 (2.9 - 4.1)	1.5 (0.4 - 4.2)	2.1 (1.4 - 3.0)	3.3 (2.0 - 5.1)
Missing	*	16.3 (5.6 - 31.9)	*	*	*	*	15.8 (10.4 - 22.2)	*	*	7.5 (6.6 - 8.5)	5.3 (2.0 - 11.3)	11.0 (7.6 - 15.1)	17.4 (9.1 - 27.9)
Mapped SEER stage													
Localised	39.7 (20.6 - 58.2)	*	*	*	*	*	56.0 (41.1 - 68.5)	*	*	40.8 (33.3 - 48.0)	*	37.1 (24.6 - 49.5)	*
Regional	25.5 (19.7 - 31.7)	21.5 (15.3 - 28.3)	23.1 (14.2 - 33.3)	29.7 (20.0 - 40.1)	20.4 (6.8 - 39.0)	19.4 (11.8 - 28.5)	24.1 (19.6 - 29.0)	31.6 (6.3 - 61.9)	25.0 (16.0 - 35.1)	17.1 (14.5 - 19.9)	13.9 (8.3 - 20.9)	17.7 (13.8 - 21.9)	13.8 (9.3 - 19.2)
Distant	3.5 (2.3 - 5.1)	3.9 (2.3 - 6.1)	5.4 (3.1 - 8.6)	4.1 (1.9 - 7.6)	6.1 (2.7 - 11.5)	3.3 (1.7 - 5.9)	4.7 (3.6 - 5.9)	5.1 (0.6 - 17.4)	3.9 (1.8 - 7.1)	4.7 (4.0 - 5.4)	1.6 (0.4 - 4.3)	2.8 (2.0 - 3.8)	2.8 (1.5 - 4.8)
Missing	*	11.9 (2.0 - 31.4)	*	*	*	*	14.3 (9.2 - 20.4)	*	*	7.5 (6.6 - 8.6)	5.5 (1.9 - 11.8)	11.7 (7.6 - 16.8)	18.3 (9.2 - 30.0)

¹NS = Net Survival; CI = Confidence Interval

* <30 patients

^o Standard population used for age-standardisation is International Cancer Survival Standard (ICSS-1) derived in Corazzini et al. (2004)

Supplementary Table 10. Age-standardised^a one- and three-year net survival (%) by (imputed) stage at diagnosis and jurisdiction for small cell lung carcinoma patients diagnosed during 2010-2014, both sexes combined

Stage	Canada, Alberta	Canada, British Columbia	Canada, Manitoba	Canada, New Brunswick	Canada, Newfoundland and Labrador	Canada, Nova Scotia	Canada, Ontario	Canada, Prince Edward Island	Canada, Saskatchewan	UK, England	UK, Northern Ireland	UK, Scotland	UK, Wales
All patients	34.6 (31.1 - 38.0)	31.0 (26.6 - 35.5)	31.4 (26.3 - 36.6)	33.8 (28.1 - 39.6)	32.6 (25.7 - 39.7)	25.2 (20.4 - 30.3)	34.4 (32.1 - 36.8)	31.9 (18.7 - 45.9)	34.2 (27.9 - 40.6)	28.5 (27.5 - 29.4)	23.7 (19.7 - 27.9)	28.0 (25.8 - 30.3)	24.8 (21.4 - 28.4)
TNM Stage													
Stage I	79.5 (67.1 - 91.8)	89.6 (76.8 - 100.0)	*	*	*	*	83.1 (75.1 - 91.1)	*	*	76.9 (71.8 - 81.9)	64.3 (37.7 - 90.9)	81.5 (64.5 - 98.4)	*
Stage II	77.0 (63.0 - 91.1)	77.8 (63.0 - 92.6)	*	*	*	*	73.2 (63.2 - 83.2)	*	*	67.9 (62.5 - 73.4)	57.5 (33.2 - 81.9)	70.3 (59.1 - 81.6)	39.8 (16.2 - 62.8)**
Stage III	58.0 (50.8 - 65.2)	48.9 (42.8 - 55.0)	50.1 (38.3 - 60.8)**	56.0 (42.2 - 67.8)**	52.9 (33.3 - 69.2)**	42.1 (29.8 - 53.8)**	54.7 (50.8 - 58.6)	42.8 (7.0 - 76.3)**°	56.2 (43.7 - 66.9)**	47.8 (45.9 - 49.7)	36.7 (27.0 - 46.4)	49.1 (44.3 - 53.8)	44.4 (37.9 - 50.7)**
Stage IV	18.2 (15.0 - 21.3)	18.3 (15.2 - 21.3)	16.0 (11.3 - 21.4)**	19.9 (14.5 - 26.0)**	19.3 (12.9 - 26.7)**	16.7 (12.6 - 21.2)**	21.8 (19.9 - 23.8)	25.6 (13.3 - 39.8)**°	21.5 (16.4 - 27.2)**	17.5 (16.6 - 18.3)	12.7 (8.6 - 16.9)	16.4 (14.4 - 18.4)	13.6 (10.9 - 16.6)**
Mapped SEER stage													
Localised	85.3 (71.3 - 99.3)	*	*	*	*	*	80.9 (71.3 - 90.5)	*	*	73.5 (68.6 - 78.4)	59.7 (33.8 - 85.6)	67.9 (56.5 - 79.4)	*
Regional	60.9 (54.6 - 67.1)	54.7 (47.7 - 61.3)**	56.9 (45.4 - 66.8)**	60.5 (47.8 - 71.0)**	56.8 (36.8 - 72.7)**	47.1 (35.4 - 58.0)**	57.4 (53.8 - 61.0)	63.2 (31.8 - 83.2)**	58.4 (46.5 - 68.5)**	54.7 (52.4 - 57.1)	38.2 (30.1 - 46.2)	52.0 (46.9 - 57.1)	44.0 (36.5 - 51.2)**
Distant	18.1 (14.9 - 21.3)	17.1 (11.7 - 23.3)**	19.2 (14.3 - 24.7)**	19.9 (14.5 - 26.0)**	20.8 (14.3 - 28.3)**	16.7 (12.6 - 21.2)**	21.7 (19.8 - 23.6)	24.6 (11.6 - 40.1)**	21.5 (16.4 - 27.2)**	20.9 (20.0 - 21.7)	13.0 (9.2 - 16.8)	19.6 (17.6 - 21.6)	13.1 (10.1 - 16.5)**
All patients	11.1 (8.6 - 13.9)	10.9 (8.0 - 14.4)	10.9 (7.8 - 14.6)	13.0 (9.4 - 17.2)	11.4 (6.8 - 17.3)	7.7 (5.0 - 11.2)	12.2 (10.4 - 14.1)	10.5 (3.5 - 21.9)	9.5 (5.9 - 14.1)	7.8 (7.2 - 8.4)	6.2 (4.0 - 9.2)	7.7 (6.5 - 9.0)	7.7 (5.8 - 10.1)
TNM Stage													
Stage I	40.2 (23.1 - 57.3)	58.3 (38.3 - 78.4)	*	*	*	*	60.1 (47.0 - 73.3)	*	*	46.3 (40.2 - 52.5)	21.4 (0.0 - 53.9)	54.1 (31.0 - 77.3)	*
Stage II	50.6 (30.9 - 70.3)	39.5 (22.2 - 56.9)	*	*	*	*	35.5 (22.9 - 48.1)	*	*	33.6 (27.1 - 40.0)	36.2 (12.2 - 60.1)	32.4 (21.3 - 43.5)	32.7 (12.6 - 54.7)**
Stage III	20.7 (14.6 - 26.9)	18.7 (14.0 - 23.4)	15.7 (8.9 - 24.4)**	27.1 (16.5 - 38.8)**	18.9 (7.2 - 34.9)**	15.9 (8.7 - 25.1)**	22.3 (18.9 - 25.7)	29.3 (3.4 - 64.0)**°	23.3 (14.0 - 34.0)**	13.9 (12.5 - 15.3)	10.6 (4.8 - 16.3)	14.7 (11.3 - 18.0)	11.1 (7.5 - 15.4)**
Stage IV	3.5 (2.1 - 4.9)	4.3 (2.6 - 6.0)	4.5 (2.3 - 7.7)**	4.1 (1.9 - 7.6)**	7.4 (3.4 - 13.4)**	3.3 (1.7 - 5.9)**	4.3 (3.3 - 5.3)	3.6 (0.2 - 16.2)**°	3.9 (1.8 - 7.1)**	2.6 (2.2 - 3.1)	1.3 (0.0 - 2.9)	2.3 (1.5 - 3.1)	3.3 (2.0 - 5.1)**
Mapped SEER stage													
Localised	39.6 (20.0 - 59.2)	*	*	*	*	*	55.2 (41.8 - 68.7)	*	*	43.5 (38.1 - 48.8)	21.5 (0.0 - 48.2)	39.3 (26.2 - 52.4)	*
Regional	25.4 (19.4 - 31.4)	21.5 (15.3 - 28.3)**	23.1 (14.2 - 33.3)**	29.7 (20.0 - 40.1)**	20.4 (6.8 - 39.0)**	19.4 (11.8 - 28.5)**	24.9 (21.7 - 28.2)	31.6 (6.3 - 61.9)**	25.0 (16.0 - 35.1)**	18.5 (16.5 - 20.6)	13.0 (7.8 - 18.3)	18.7 (14.7 - 22.8)	13.8 (9.3 - 19.2)**
Distant	3.5 (2.1 - 4.9)	3.9 (2.3 - 6.1)**	5.4 (3.1 - 8.6)**	4.1 (1.9 - 7.6)**	6.1 (2.7 - 11.5)**	3.3 (1.7 - 5.9)**	4.1 (3.2 - 5.1)	5.1 (0.6 - 17.4)**	3.9 (1.8 - 7.1)**	3.7 (3.2 - 4.2)	1.5 (0.0 - 3.2)	3.1 (2.2 - 4.0)	2.8 (1.5 - 4.8)**

¹NS = Net Survival; CI = Confidence Interval

* <30 patients

** Non-imputed results - imputation model did not converge

° No age standardisation

^a Standard population used for age-standardisation is International Cancer Survival Standard (ICSS-1) derived in Corazziari et al. (2004)

Supplementary Table 11. Age-standardised* one- and three-year net survival (%) by (imputed) stage at diagnosis and country for non-small cell lung carcinoma patients diagnosed during 2010-2014, males

	Stage	Australia [†]	Canada [†]	Denmark	Ireland [†]	New Zealand	Norway	United Kingdom [†]	
1-year NS (95% CI) [‡]	All patients	47.1 (45.8 - 48.3)	48.1 (47.2 - 48.9)	45.0 (43.4 - 46.7)	41.8 (39.7 - 43.9)	41.5 (39.3 - 43.7)	46.9 (44.8 - 49.0)	40.8 (40.3 - 41.4)	
	TNM Stage								
	Stage I		91.6 (90.5 - 92.6)	92.0 (88.8 - 95.1)	86.3 (81.6 - 91.1)			92.6 (89.8 - 95.4)	88.5 (87.3 - 89.7)
	Stage II		80.2 (77.2 - 83.2)	84.4 (81.9 - 86.8)	69.8 (61.7 - 78.0)			78.6 (74.5 - 82.7)	76.3 (74.6 - 78.1)
	Stage III		56.6 (54.8 - 58.5)	56.0 (52.8 - 59.2)	45.3 (41.0 - 49.6)			50.2 (44.9 - 55.5)	50.3 (49.0 - 51.6)
	Stage IV		23.6 (22.6 - 24.5)	21.2 (19.3 - 23.1)	19.8 (17.3 - 22.3)			21.8 (19.3 - 24.2)	18.8 (18.2 - 19.4)
	Mapped SEER stage								
	Localised	81.6 (79.0 - 84.2)	91.1 (89.8 - 92.3)	87.9 (85.4 - 90.3)	81.7 (78.4 - 85.0)	90.7 (86.4 - 95.0)	81.7 (78.5 - 84.9)	87.0 (86.0 - 88.0)	
	Regional	67.4 (64.6 - 70.2)	67.2 (65.9 - 68.6)	66.3 (63.6 - 69.0)	48.2 (44.0 - 52.4)	64.5 (60.2 - 68.8)	58.8 (55.5 - 62.2)	59.9 (58.7 - 61.0)	
	Distant	25.6 (23.8 - 27.4)	23.6 (22.7 - 24.6)	23.0 (21.1 - 24.8)	21.9 (19.5 - 24.3)	22.2 (19.5 - 24.9)	23.1 (20.6 - 25.5)	20.2 (19.6 - 20.8)	
3-year NS (95% CI) [‡]	All patients	23.6 (22.6 - 24.7)	27.1 (26.4 - 27.9)	22.4 (21.0 - 23.8)	20.7 (19.1 - 22.3)	20.3 (18.4 - 22.2)	24.7 (22.8 - 26.6)	19.7 (19.2 - 20.1)	
	TNM Stage								
	Stage I		74.4 (72.6 - 76.2)	74.7 (69.5 - 79.9)	64.8 (58.5 - 71.0)			77.4 (71.9 - 82.8)	68.2 (66.2 - 70.2)
	Stage II		54.0 (49.6 - 58.5)	60.4 (56.7 - 64.1)	46.1 (39.8 - 52.5)			55.0 (49.7 - 60.4)	48.9 (46.9 - 51.0)
	Stage III		25.6 (24.0 - 27.3)	22.6 (19.8 - 25.4)	17.1 (13.9 - 20.2)			19.3 (14.7 - 24.0)	18.3 (17.2 - 19.4)
	Stage IV		6.8 (6.2 - 7.5)	3.9 (2.9 - 4.9)	5.3 (4.0 - 6.6)			4.3 (2.8 - 5.7)	4.0 (3.7 - 4.3)
	Mapped SEER stage								
	Localised	60.2 (56.7 - 63.7)	73.8 (71.6 - 75.9)	69.2 (65.7 - 72.6)	59.6 (55.5 - 63.7)	80.3 (73.2 - 87.5)	64.6 (60.5 - 68.6)	65.5 (63.9 - 67.1)	
	Regional	35.1 (32.1 - 38.0)	39.1 (37.6 - 40.6)	33.8 (30.8 - 36.8)	21.8 (18.7 - 25.0)	31.0 (26.3 - 35.7)	28.0 (24.5 - 31.5)	27.4 (26.3 - 28.5)	
	Distant	7.2 (6.1 - 8.3)	6.9 (6.3 - 7.6)	4.6 (3.7 - 5.6)	6.0 (4.7 - 7.3)	5.1 (3.6 - 6.6)	5.7 (4.2 - 7.2)	4.1 (3.8 - 4.4)	

[‡]NS = Net Survival; CI = Confidence Interval

[†]Australia includes New South Wales; Canada includes Alberta, British Columbia, New Brunswick, Manitoba, Newfoundland, Nova Scotia, Ontario, Prince Edward Island, and Saskatchewan; Ireland (2010-2013); United Kingdom includes England, Northern Ireland, Scotland, and Wales

* Standard population used for age-standardisation is International Cancer Survival Standard (ICSS-1) derived in Corazziari et al. (2004)

Supplementary Table 12. Age-standardised* one- and three-year net survival (%) by (imputed) stage at diagnosis and country for non-small cell lung carcinoma patients diagnosed during 2010-2014, females

Stage	Australia [†]	Canada [†]	Denmark	Ireland [†]	New Zealand	Norway	United Kingdom [†]
All patients [‡]	55.0 (53.6 - 56.4)	57.8 (56.9 - 58.6)	53.8 (52.1 - 55.5)	54.4 (52.1 - 56.6)	49.0 (46.7 - 51.2)	54.6 (52.4 - 56.7)	48.3 (47.7 - 48.8)
TNM Stage							
Stage I		94.4 (93.5 - 95.2)	92.7 (90.5 - 94.9)	94.0 (91.1 - 97.0)		95.4 (92.9 - 98.0)	92.6 (91.7 - 93.5)
Stage II		83.7 (81.6 - 85.9)	89.9 (87.8 - 92.1)	79.6 (75.7 - 83.6)		87.3 (82.1 - 92.6)	80.7 (79.2 - 82.3)
Stage III		63.8 (61.9 - 65.7)	63.7 (59.5 - 67.9)	54.6 (50.3 - 58.9)		58.9 (53.8 - 63.9)	55.0 (53.7 - 56.3)
Stage IV		31.2 (30.1 - 32.3)	31.0 (29.0 - 33.0)	25.7 (22.5 - 28.9)		24.9 (22.1 - 27.6)	24.8 (24.1 - 25.4)
Mapped SEER stage							
Localised	88.2 (85.7 - 90.6)	94.3 (93.2 - 95.3)	91.7 (90.1 - 93.4)	89.1 (86.5 - 91.7)	96.3 (93.4 - 99.2)	87.4 (84.9 - 89.8)	91.7 (91.0 - 92.5)
Regional	73.6 (70.6 - 76.6)	73.8 (72.5 - 75.1)	72.5 (69.1 - 75.8)	60.2 (56.5 - 64.0)	75.2 (70.7 - 79.7)	70.2 (67.2 - 73.2)	63.3 (62.1 - 64.4)
Distant	32.2 (30.0 - 34.5)	31.3 (30.3 - 32.4)	32.4 (30.4 - 34.4)	27.9 (24.8 - 31.1)	29.5 (26.6 - 32.5)	25.4 (22.7 - 28.2)	25.9 (25.2 - 26.6)
1-year NS (95% CI)[‡]							
All patients [‡]	30.3 (29.0 - 31.7)	35.0 (34.2 - 35.9)	30.8 (29.2 - 32.4)	32.5 (30.4 - 34.6)	25.9 (23.9 - 28.0)	32.1 (30.1 - 34.1)	25.3 (24.8 - 25.9)
TNM Stage							
Stage I		81.6 (80.2 - 83.1)	80.7 (74.4 - 87.1)	83.0 (78.3 - 87.8)		82.9 (78.4 - 87.5)	76.7 (75.1 - 78.3)
Stage II		61.5 (58.6 - 64.3)	72.9 (68.9 - 76.9)	58.2 (53.6 - 62.8)		59.9 (51.8 - 68.0)	54.9 (52.7 - 57.2)
Stage III		30.6 (28.7 - 32.5)	31.1 (27.6 - 34.5)	23.6 (19.5 - 27.6)		24.9 (20.0 - 29.8)	22.2 (20.9 - 23.5)
Stage IV		9.3 (8.5 - 10.1)	8.3 (7.1 - 9.5)	6.9 (5.0 - 8.7)		5.9 (4.4 - 7.5)	5.6 (5.2 - 6.0)
Mapped SEER stage							
Localised	71.7 (68.3 - 75.2)	82.3 (80.6 - 84.0)	78.8 (76.2 - 81.3)	74.5 (70.9 - 78.1)	84.6 (74.9 - 94.2)	70.7 (66.7 - 74.6)	73.9 (72.7 - 75.2)
Regional	42.4 (39.0 - 45.9)	46.1 (44.4 - 47.7)	42.5 (38.8 - 46.3)	31.6 (27.6 - 35.5)	40.9 (35.3 - 46.5)	36.2 (31.9 - 40.4)	30.4 (29.2 - 31.7)
Distant	9.4 (8.0 - 10.8)	9.4 (8.6 - 10.2)	9.3 (8.0 - 10.5)	7.6 (5.7 - 9.4)	8.6 (6.7 - 10.4)	7.2 (5.6 - 8.7)	5.5 (5.1 - 5.9)
3-year NS (95% CI)[‡]							

[‡]NS = Net Survival; CI = Confidence Interval

[†]Australia includes New South Wales; Canada includes Alberta, British Columbia, New Brunswick, Manitoba, Newfoundland, Nova Scotia, Ontario, Prince Edward Island, and Saskatchewan; Ireland (2010-2013); United Kingdom includes England, Northern Ireland, Scotland, and Wales

* Standard population used for age-standardisation is International Cancer Survival Standard (ICSS-1) derived in Corazziari et al. (2004)

Supplementary Table 13. Age-standardised^o one- and three-year net survival (%) by (imputed) stage at diagnosis and country for small cell lung carcinoma patients diagnosed during 2010-2014, males

	Stage	Australia [†]	Canada [†]	Denmark	Ireland [†]	New Zealand	Norway	United Kingdom [†]	
1-year NS (95% CI)	All patients [‡]	31.8 (28.6 - 35.1)	28.6 (26.6 - 30.7)	31.0 (27.1 - 34.9)	26.7 (22.1 - 31.5)	25.0 (20.6 - 29.6)	30.6 (26.4 - 34.9)	25.0 (23.9 - 26.1)	
	TNM Stage ^p								
	Stage I		78.0 (68.9 - 87.1)	*	*		*	75.9 (69.4 - 82.5)	
	Stage II		72.0 (62.7 - 81.2)	85.5 (75.3 - 95.8)	*		60.0 (43.7 - 76.2)	65.4 (59.1 - 71.7)	
	Stage III		50.0 (46.0 - 54.0)	54.3 (46.5 - 62.0)	41.8 (31.6 - 52.0)		54.3 (46.0 - 62.6)	43.7 (41.3 - 46.2)	
	Stage IV		17.3 (15.7 - 18.9)	22.4 (19.3 - 25.6)	16.7 (12.4 - 21.0)		15.2 (10.9 - 19.5)	15.1 (14.2 - 16.1)	
	Mapped SEER stage ^p								
	Localised	58.3 (46.5 - 70.1)	82.2 (72.4 - 91.9)	79.5 (60.1 - 98.9)	*	*	58.6 (44.4 - 72.8)	69.7 (62.9 - 76.4)	
	Regional	60.0 (51.5 - 68.4)	52.6 (48.9 - 56.2)	63.0 (54.0 - 71.9)	41.3 (32.0 - 50.6)	39.8 (26.8 - 52.4)**	57.7 (50.7 - 64.8)	48.5 (45.7 - 51.3)	
	Distant	20.2 (16.7 - 23.7)	17.3 (15.7 - 18.9)	24.3 (21.3 - 27.4)	17.8 (13.6 - 21.9)	13.5 (9.6 - 18.0)**	13.7 (10.4 - 17.0)	17.7 (16.8 - 18.7)	
3-year NS (95% CI)	All patients [‡]	8.1 (6.3 - 10.2)	9.1 (7.6 - 10.7)	7.3 (5.4 - 9.7)	7.5 (5.2 - 10.4)	6.9 (3.8 - 11.1)	9.7 (7.0 - 13.0)	6.3 (5.7 - 6.9)	
	TNM Stage ^p								
	Stage I		48.4 (35.8 - 61.0)	*	*		*	39.3 (30.6 - 47.9)	
	Stage II		33.0 (23.1 - 42.8)	39.9 (18.7 - 61.2)	*		30.7 (15.9 - 45.5)	32.7 (25.0 - 40.4)	
	Stage III		17.2 (14.1 - 20.2)	19.5 (13.7 - 25.3)	13.0 (6.9 - 19.2)		22.9 (16.7 - 29.2)	11.5 (9.6 - 13.3)	
	Stage IV		3.8 (3.0 - 4.6)	3.2 (1.9 - 4.5)	2.0 (0.4 - 3.7)		1.3 (0.2 - 2.4)	2.0 (1.5 - 2.5)	
	Mapped SEER stage ^p								
	Localised	26.1 (15.6 - 36.6)	42.9 (28.4 - 57.4)	48.3 (29.8 - 66.9)	*	*	30.0 (17.7 - 42.4)	36.2 (28.6 - 43.8)	
	Regional	19.6 (13.3 - 25.9)	20.3 (17.3 - 23.4)	21.3 (13.9 - 28.6)	15.8 (9.5 - 22.1)	20.9 (10.4 - 33.7)**	23.9 (17.8 - 30.0)	15.8 (13.5 - 18.1)	
	Distant	2.2 (0.9 - 3.5)	3.8 (3.0 - 4.6)	4.6 (3.1 - 6.0)	2.2 (0.7 - 3.8)	4.3 (2.3 - 7.2)**	1.3 (0.3 - 2.3)	2.6 (2.1 - 3.0)	

[‡]NS = Net Survival; CI = Confidence Interval

[†]Australia includes New South Wales; Canada includes Alberta, British Columbia, New Brunswick, Manitoba, Newfoundland, Nova Scotia, Ontario, Prince Edward Island, and Saskatchewan; Ireland (2010-2013); United Kingdom includes England, Northern Ireland, Scotland, and Wales

* <30 patients

** Non-imputed results - imputation model did not converge

^o Standard population used for age-standardisation is International Cancer Survival Standard (ICSS-1) derived in Corazziari et al. (2004)

Supplementary Table 14. Age-standardised^o one- and three-year net survival (%) by (imputed) stage at diagnosis and country for small cell lung carcinoma patients diagnosed during 2010-2014, females

	Stage	Australia [†]	Canada [†]	Denmark	Ireland [†]	New Zealand	Norway	United Kingdom [†]	
1-year NS (95% CI) [‡]	All patients	38.4 (35.0 - 41.8)	39.2 (36.9 - 41.4)	38.8 (35.2 - 42.3)	35.1 (30.2 - 40.0)	33.3 (27.9 - 38.8)	37.4 (32.4 - 42.4)	31.2 (29.9 - 32.4)	
	TNM Stage								
	Stage I		86.6 (80.1 - 93.0)	*	*		*	79.7 (73.7 - 85.8)	
	Stage II		76.8 (68.4 - 85.2)	76.7 (63.1 - 90.3)	69.2 (54.2 - 84.2)		86.4 (74.9 - 97.9)	69.6 (63.3 - 75.9)	
	Stage III		56.3 (52.9 - 59.7)	54.8 (48.3 - 61.4)	49.1 (40.7 - 57.6)		53.2 (44.1 - 62.3)	50.5 (48.2 - 52.8)	
	Stage IV		23.7 (21.8 - 25.7)	26.2 (22.9 - 29.5)	21.5 (16.6 - 26.4)		23.9 (19.5 - 28.3)	18.9 (17.8 - 20.0)	
	Mapped SEER stage								
	Localised	62.8 (50.5 - 75.2)	84.7 (76.9 - 92.5)	79.4 (66.0 - 92.8)	*	*	71.2 (59.0 - 83.4)	75.5 (70.0 - 81.1)	
	Regional	66.4 (58.7 - 74.1)	59.7 (56.5 - 62.9)	61.7 (54.1 - 69.3)	51.5 (43.3 - 59.7)	48.4 (34.0 - 61.3)**	57.2 (49.5 - 64.8)	56.5 (53.9 - 59.2)	
	Distant	25.7 (21.0 - 30.4)	23.6 (21.7 - 25.5)	28.7 (25.5 - 31.9)	23.5 (18.6 - 28.4)	17.2 (12.5 - 22.6)**	22.1 (18.1 - 26.1)	22.5 (21.4 - 23.6)	
3-year NS (95% CI) [‡]	All patients	12.0 (9.7 - 14.5)	13.8 (11.9 - 15.8)	12.0 (8.9 - 15.6)	11.0 (8.1 - 14.4)	10.4 (7.4 - 13.9)	12.8 (9.3 - 17.0)	9.2 (8.4 - 10.0)	
	TNM Stage								
	Stage I		58.0 (47.8 - 68.1)	*	*		*	51.9 (44.2 - 59.7)	
	Stage II		39.8 (28.4 - 51.3)	59.9 (44.2 - 75.7)	43.3 (24.3 - 62.3)		49.7 (33.3 - 66.1)	37.0 (30.2 - 43.8)	
	Stage III		24.2 (21.2 - 27.2)	22.7 (17.4 - 28.0)	18.6 (12.7 - 24.6)		20.0 (12.9 - 27.2)	15.6 (13.9 - 17.3)	
	Stage IV		4.8 (3.8 - 5.8)	4.5 (3.0 - 6.0)	2.6 (0.8 - 4.3)		2.1 (0.7 - 3.5)	3.2 (2.7 - 3.7)	
	Mapped SEER stage								
	Localised	30.2 (18.0 - 42.4)	53.3 (41.6 - 64.9)	63.8 (47.6 - 80.0)	*	*	40.3 (27.7 - 53.0)	47.7 (41.1 - 54.3)	
	Regional	25.1 (18.6 - 31.7)	27.3 (24.4 - 30.3)	33.2 (26.0 - 40.4)	22.0 (15.7 - 28.4)	14.7 (7.0 - 25.2)**	21.2 (15.0 - 27.4)	19.6 (17.4 - 21.9)	
	Distant	6.5 (3.7 - 9.4)	4.8 (3.8 - 5.7)	5.7 (4.1 - 7.2)	3.5 (1.6 - 5.5)	2.9 (1.3 - 5.7)**	2.3 (0.9 - 3.7)	4.5 (3.9 - 5.1)	

[‡]NS = Net Survival; CI = Confidence Interval

[†]Australia includes New South Wales; Canada includes Alberta, British Columbia, New Brunswick, Manitoba, Newfoundland, Nova Scotia, Ontario, Prince Edward Island, and Saskatchewan; Ireland (2010-2013); United Kingdom includes England, Northern Ireland, Scotland, and Wales

* <30 patients

** Non-imputed results - imputation model did not converge

^o Standard population used for age-standardisation is International Cancer Survival Standard (ICSS-1) derived in Corazziari et al. (2004)

Supplementary Table 15. Number and proportion of male patients with non-small cell lung carcinoma (NSCLC) and small cell lung carcinoma (SCLC) diagnosed during 2010-2014 by jurisdiction and stage at diagnosis (TNM and mapped SEER), before and after imputation

	TNM stage	NSCLC								SCLC								Mapped SEER							
		Stage	Number	Median age at diagnosis		%		Number	Median age at diagnosis		%		Stage	Number	Median age at diagnosis		%		Number	Median age at diagnosis		%			
				Observed	After imputation	Observed	After imputation		Observed	After imputation	Observed	After imputation			Observed	After imputation	Observed	After imputation							
Canada, Alberta	All patients	3453	70 (62-77)				590	68 (62-76)				All patients	3,453	70 (62-77)				590	68 (62-76)						
	Missing	39	77 (68-81)	1.1			3	77 (76-80)	0.5			Missing	5	70 (59-81)	0.1			2	77 (76-77)	0.3					
	I	592	71 (64-77)	17.3	17.8		21	73 (63-82)	3.6	4.4		Localised	432	72 (65-78)	12.5	12.7		15	72 (64-83)	2.6	2.6 *				
	II	310	71 (62-76)	9.1	9.3		23	68 (63-73)	3.9	4.1		Regional	1,125	70 (63-76)	32.6	33.4		144	67 (62-75)	24.5	24.5 *				
	III	625	69 (62-76)	18.3	18.7		114	67 (62-75)	19.4	22.0		Distant	1,891	69 (61-77)	54.8	53.9		429	68 (62-76)	73.0	73.0 *				
	IV	1,887	69 (61-77)	55.3	54.1		429	68 (62-76)	73.1	69.5															
Canada, British Columbia	All patients	5188	71 (63-78)				736	69 (62-77)				All patients	5,188	71 (63-78)				736	69 (62-77)						
	Missing	255	75 (68-81)	4.9			31	73 (64-79)	4.2			Missing	170	76 (70-81)	3.3			23	73 (66-78)	3.1					
	I	786	71 (64-78)	15.9	17.0		13	77 (70-79)	1.8	1.8 *		Localised	519	71 (64-78)	10.3	10.8		10	77 (76-82)	1.4	1.4 *				
	II	460	71 (64-78)	9.3	9.7		26	70 (66-80)	3.7	3.7 *		Regional	1,914	72 (64-78)	38.1	38.1		210	70 (63-77)	29.5	29.5 *				
	III	1107	71 (64-78)	22.4	21.8		173	69 (63-77)	24.5	24.5 *		Distant	2,585	70 (62-77)	51.5	51.1		493	69 (61-76)	69.1	69.1 *				
	IV	2580	70 (62-77)	52.3	51.5		493	69 (61-76)	69.9	69.9 *															
Canada, Manitoba	All patients	1233	69 (62-76)				203	67 (60-74)				All patients	1,233	69 (62-76)				203	67 (60-74)						
	Missing	11	66 (54-75)	0.9			6	72 (63-77)	3.0			Missing	1	54 (54-54)	0.1			1	65 (65-65)	0.5					
	I	155	69 (63-75)	12.7	12.1		7	69 (59-75)	3.6	3.6 *		Localised	240	69 (63-76)	19.5	20.3		9	74 (64-77)	4.5	4.5 *				
	II	247	70 (64-77)	20.2	18.7		10	75 (65-77)	5.1	5.1 *		Regional	331	70 (64-76)	26.9	24.4		40	69 (63-76)	19.8	19.8 *				
	III	226	69 (62-76)	18.5	18.9		39	67 (59-73)	19.8	19.8 *		Distant	661	68 (61-76)	53.7	55.3		153	66 (59-73)	75.7	75.7 *				
	IV	594	68 (61-75)	48.6	50.3		141	67 (59-74)	71.6	71.6 *															
Canada, New Brunswick	All patients	1355	70 (63-76)				243	68 (61-74)				All patients	1,355	70 (63-76)				243	68 (61-74)						
	Missing	16	72 (67-80)	1.2			2	66 (59-73)	0.8			Missing	2	79 (71-86)	0.1			1	59 (59-59)	0.4					
	I	351	71 (65-78)	26.2	25.7		7	68 (62-74)	2.9	2.9 *		Localised	266	70 (65-78)	19.7	20.4		5	70 (67-79)	2.1	2.1 *				
	II	136	71 (65-75)	10.2	9.5		12	66 (62-71)	5.0	5.0 *		Regional	520	70 (63-76)	38.4	36.7		72	67 (61-73)	29.8	29.8 *				
	III	285	69 (61-76)	21.3	21.7		57	67 (61-73)	23.7	23.7 *		Distant	567	69 (62-75)	41.9	42.9		165	69 (61-74)	68.2	68.2 *				
	IV	567	69 (62-75)	42.3	43.1		165	69 (61-74)	68.5	68.5 *															
Canada, Newfoundland	All patients	838	69 (63-75)				145	67 (60-73)				All patients	838	69 (63-75)				145	67 (60-73)						
	Missing	13	69 (64-79)	1.6			4	70 (60-76)	2.8			Missing	4	73 (61-79)	0.5					0.0					
	I	131	71 (64-77)	15.9	15.7		7	76 (64-78)	5.0	5.0 *		Localised	165	71 (65-77)	19.8	21.3		8	76 (65-78)	5.5	5.5 *				
	II	121	70 (64-75)	14.7	15.0		1	51 (51-51)	0.7	0.7 *		Regional	278	68 (62-74)	33.3	30.3		30	67 (59-72)	20.7	20.7 *				
	III	212	68 (61-73)	25.7	24.7		31	69 (60-73)	22.0	22.0 *		Distant	391	68 (62-76)	46.9	48.3		107	67 (60-73)	73.8	73.8 *				
	IV	361	68 (62-76)	43.8	44.7		102	67 (60-72)	72.3	72.3 *															
Canada, Nova Scotia	All patients	1546	70 (63-76)				226	69 (61-74)				All patients	1,546	70 (63-76)				226	69 (61-74)						
	Missing	20	76 (69-86)	1.3			0	-	0.0			Missing	10	75 (70-87)	0.6			0	-	0.0					
	I	337	71 (64-77)	22.1	23.4		5	73 (69-78)	2.2	2.2 *		Localised	284	71 (64-77)	18.5	20.6		4	71 (69-77)	1.8	1.8 *				
	II	170	71 (64-77)	11.1	10.6		4	68 (66-71)	1.8	1.8 *		Regional	539	70 (64-77)	35.1	33.9		43	67 (61-74)	19.0	19.0 *				
	III	306	70 (64-76)	20.1	20.0		38	67 (60-75)	16.8	16.8 *		Distant	713	69 (62-76)	46.4	45.5		179	69 (61-74)	79.2	79.2 *				
	IV	713	69 (62-76)	46.7	45.9		179	69 (61-74)	79.2	79.2 *															
Canada, Ontario	All patients	16111	70 (63-77)				2436	68 (61-76)				All patients	16,111	70 (63-77)				2436	68 (61-76)						
	Missing	1579	70 (63-78)	9.8			152	69 (61-75)	6.2			Missing	1,490	70 (63-78)	9.2			145	69 (61-75)	6.0					
	I	2816	72 (65-78)	19.4	20.2		64	74 (64-79)	2.8	3.0		Localised	2,205	72 (65-78)	15.1	16.0		53	74 (66-79)	2.3	2.5				
	II	1455	71 (64-77)	10.0	10.3		58	70 (62-75)	2.5	2.9		Regional	5,234	71 (63-77)	35.8	36.1		564	68 (62-75)	24.6	26.3				
	III	3078	70 (63-77)	21.2	21.3		488	68 (62-75)	21.4	22.6		Distant	7,182	70 (62-77)	49.1	47.9		1674	68 (61-76)	73.1	71.2				
	IV	7183	70 (62-77)	49.4	48.3		1674	68 (61-76)	73.3	71.4															
Canada, Prince Edward Island	All patients	231	68 (63-75)				37	71 (64-77)				All patients	231	68 (63-75)				37	71 (64-77)						
	Missing	4	79 (57-86)	1.7			0	-	0.0			Missing	3	76 (50-81)	1.3			0	-	0.0					
	I	36	68 (59-73)	15.9	15.9 *		0	-	0.0	0.0 *		Localised	32	68 (59-73)	14.0	15.5		0	-	0.0	0.0 *				
	II	21	67 (62-78)	9.3	9.3 *		3	77 (63-77)	8.1	8.1 *		Regional	91	69 (64-75)	39.9	38.5		5	67 (65-77)	13.5	13.5 *				
	III	65	70 (64-75)	28.6	28.6 *		2	67 (66-67)	5.4	5.4 *		Distant	105	67 (63-75)	46.1	46.0		32	71 (64-76)	86.5	86.5 *				
	IV	105	67 (63-75)	46.3	46.3 *		32	71 (64-76)	86.5	86.5 *															
Canada, Saskatchewan	All patients	1187	71 (64-77)				246	68 (61-74)				All patients	1,187	71 (64-77)				246	68 (61-74)						
	Missing	8	71 (69-84)	0.7			4	67 (57-75)	1.6			Missing	1	68 (68-68)	0.1			1	58 (58-58)	0.4					
	I	197	70 (65-76)	16.7	15.8		2	77 (73-81)	0.8	0.8 *		Localised	146	70 (65-76)	12.3	12.0		3	75 (73-81)	1.2	1.2 *				
	II	102	75 (69-79)	8.7	8.5		5	68 (57-78)	2.1	2.1 *		Regional	392	72 (65-77)	33.1	32.0		49	69 (58-75)	20.0	20.0 *				
	III	233	70 (64-76)	19.8	19.4		42	70 (58-75)	17.4	17.4 *		Distant	648	70 (63-77)	54.6	56.0		193	68 (61-74)	78.8	78.8 *				
	IV	647	70 (63-77)	54.9	56.3		193	68 (61-74)	79.8	79.8 *															
UK, England	All patients	58417	71 (64-78)				9791	70 (63-76)				All patients	58,417	71 (64-78)				9791	70 (63-76)						
	Missing	22890	71 (64-78)	39.2			3852	70 (63-76)	39.3			Missing	18,025	72 (64-79)	30.9			3424	70 (63-76)	35.0					
	I	5163	72 (66-78)	14.5	14.6		147	73 (65-77)	2.5	2.5		Localised	7,684	72 (66-78)	19.0	17.1		193	73 (65-77)	3.0	2.9				
	II	3663	72 (65-78)	10.3	10.1		184	71 (65-79)	3.1	3.0		Regional	10,532	71 (65-77)	36.1	25.0		997	70 (64-77)	15.7	15.3				
	III	8311	71 (64-78)	23.4	23.0		1310	69 (63-76)	22.1	21.8		Distant	22,176	70 (63-77)	54.9	57.9		5177	70 (63-76)	81.3	81.9				
	IV	18390	71 (64-77)	51.8	52.2		429																		

Supplementary Table 16. Number and proportion of female patients with non-small cell lung carcinoma (NSCLC) and small cell lung carcinoma (SCLC) diagnosed during 2010-2014 by jurisdiction and stage at diagnosis (TNM and mapped SEER), before and after imputation

		TNM stage				SCLC				Mapped SEER								
		NSCLC		%		SCLC		%		NSCLC		SCLC		%				
	Stage	Number	Median age at diagnosis	Observed	After imputation	Number	Median age at diagnosis	Observed	After imputation	Stage	Number	Median age at diagnosis	Observed	After imputation	Number	Median age at diagnosis	Observed	After imputation
Canada, Alberta	All patients	3364	69 (61-76)			607	68 (60-76)			All patients	3,364	69 (61-76)			607	68 (60-76)		
	Missing	26	73 (63-82)	0.8		3	83 (77-85)	0.5		Missing	8	75 (59-87)	0.2		0	-		0.0
	I	781	69 (62-76)	23.4	24.9	29	70 (62-76)	4.8	5.7	Localised	559	70 (63-76)	16.7	17.7	21	68 (63-73)	3.5	3.5 *
	II	306	71 (64-77)	9.2	9.4	21	74 (71-79)	3.5	4.6	Regional	1,163	70 (63-76)	34.7	34.6	169	69 (60-76)	27.8	27.8 *
	III	617	70 (63-76)	18.5	17.7	137	66 (60-74)	22.7	25.7	Distant	1,634	68 (60-76)	48.7	47.8	417	68 (60-77)	68.7	68.7 *
Canada, British Columbia	All patients	5074	70 (62-77)			774	69 (63-76)			All patients	5,074	70 (62-77)			774	69 (63-76)		
Missing	229	75 (66-82)	4.5		20	72 (63-78)	2.6		Missing	147	76 (68-83)	2.9		17	72 (65-78)	2.2		
I	973	70 (64-77)	20.1	22.6	21	63 (57-70)	2.8	2.8 *	Localised	649	70 (64-77)	13.2	14.8	11	63 (58-75)	1.5	1.5 *	
II	432	71 (63-76)	8.9	8.7	26	69 (61-72)	3.4	3.4 *	Regional	1,826	71 (63-77)	37.1	36.9	264	68 (61-75)	34.9	34.9 *	
III	992	70 (63-78)	20.5	19.9	225	68 (62-76)	29.8	29.8 *	Distant	2,452	69 (60-77)	49.8	48.3	482	70 (64-76)	63.7	63.7 *	
IV	2448	69 (60-77)	50.5	48.8	482	70 (64-76)	63.9	63.9 *										
Canada, Manitoba	All patients	1231	69 (61-76)			236	69 (61-75)			All patients	1,231	69 (61-76)			236	69 (61-75)		
Missing	3	81 (71-81)	0.2		9	73 (59-81)	3.8		Missing	0	-	0.0		0	-		0.0	
I	213	70 (62-76)	17.3	18.8	6	75 (68-79)	2.6	2.6 *	Localised	297	70 (63-76)	24.1	24.1 *	10	74 (68-77)	4.2	4.2 *	
II	275	69 (62-76)	22.4	20.3	12	72 (70-76)	5.3	5.3 *	Regional	348	70 (61-77)	28.3	28.3 *	63	71 (62-76)	26.7	26.7 *	
III	226	69 (60-77)	18.4	19.2	66	68 (59-74)	29.1	29.1 *	Distant	586	67 (60-75)	47.6	47.6 *	163	68 (61-74)	69.1	69.1 *	
IV	514	67 (60-75)	41.9	41.6	143	69 (61-74)	63.0	63.0 *										
Canada, New Brunswick	All patients	1034	68 (61-76)			196	68 (59-75)			All patients	1,034	68 (61-76)			196	68 (59-75)		
Missing	10	72 (69-79)	1.0		3	52 (52-68)	1.5		Missing	2	75 (73-77)	0.2		1	52 (52-52)	0.5		
I	321	69 (62-76)	31.3	30.7	5	72 (70-74)	2.6	2.6 *	Localised	230	69 (63-77)	22.3	22.1	4	70 (67-75)	2.1	2.1 *	
II	116	68 (63-75)	11.3	12.2	15	66 (57-74)	7.8	7.8 *	Regional	424	68 (61-75)	41.1	40.7	70	67 (58-75)	35.9	35.9 *	
III	209	68 (61-75)	20.4	19.8	52	67 (58-75)	26.9	26.9 *	Distant	378	67 (60-76)	36.6	37.2	121	67 (60-76)	62.1	62.1 *	
IV	378	67 (60-76)	36.9	37.4	121	67 (60-76)	62.7	62.7 *										
Canada, Newfoundland	All patients	582	67 (60-74)			126	67 (60-72)			All patients	582	67 (60-74)			126	67 (60-72)		
Missing	9	73 (65-81)	1.5		10	69 (57-74)	7.9		Missing	3	83 (73-85)	0.5		1	68 (68-68)	0.8		
I	117	68 (62-75)	20.4	21.0	3	84 (71-85)	2.6	2.6 *	Localised	137	69 (62-75)	23.7	26.3	5	71 (68-85)	4.0	4.0 *	
II	97	69 (62-76)	16.9	16.9	7	68 (67-71)	6.0	6.0 *	Regional	179	67 (62-74)	30.9	27.1	38	69 (57-73)	30.4	30.4 *	
III	112	66 (61-73)	19.5	18.9	28	68 (58-74)	24.1	24.1 *	Distant	263	66 (58-73)	45.4	46.6	82	66 (60-72)	65.6	65.6 *	
IV	247	66 (58-73)	43.1	43.2	78	66 (60-72)	67.2	67.2 *										
Canada, Nova Scotia	All patients	1344	68 (61-75)			281	68 (60-76)			All patients	1,344	68 (61-75)			281	68 (60-76)		
Missing	6	71 (66-86)	0.4		1	73 (73-73)	0.4		Missing	2	76 (66-85)	0.1		1	73 (73-73)	0.4		
I	403	69 (62-76)	30.1	30.7	4	68 (61-77)	1.4	1.4 *	Localised	352	69 (63-76)	26.2	26.4	4	68 (61-77)	1.4	1.4 *	
II	103	71 (62-76)	7.7	8.1	8	65 (60-74)	2.9	2.9 *	Regional	390	69 (62-76)	29.1	29.4	66	69 (61-76)	23.6	23.6 *	
III	232	69 (61-75)	17.3	17.0	58	70 (61-76)	20.7	20.7 *	Distant	600	67 (60-75)	44.7	44.2	210	68 (60-77)	75.0	75.0 *	
IV	600	67 (60-75)	44.8	44.2	210	68 (60-77)	75.0	75.0 *										
Canada, Ontario	All patients	14864	69 (62-77)			2303	69 (61-75)			All patients	14,864	69 (62-77)			2303	69 (61-75)		
Missing	1451	70 (61-78)	9.8		140	70 (63-77)	6.1		Missing	1,366	70 (61-78)	9.2		134	70 (63-77)	5.8		
I	3314	70 (63-77)	24.7	26.0	80	73 (64-79)	3.7	3.7 *	Localised	2,626	70 (63-77)	19.5	20.9	68	73 (63-80)	3.1	3.4	
II	1263	69 (62-76)	9.4	9.6	75	69 (64-77)	3.5	3.5 *	Regional	4,652	69 (62-76)	34.5	35.1	686	68 (60-74)	31.6	33.6	
III	2617	69 (61-76)	19.5	20.0	593	67 (60-74)	27.4	27.4 *	Distant	6,220	69 (61-77)	46.1	44.1	1415	69 (61-75)	65.2	63.0	
IV	6219	69 (61-77)	46.4	44.4	1415	69 (61-75)	65.4	65.4 *										
Canada, Prince Edward Island	All patients	169	68 (60-75)			44	69 (63-75)			All patients	169	68 (60-75)			44	69 (63-75)		
Missing	2	77 (77-77)	1.2		1	70 (70-70)	2.3		Missing	1	77 (77-77)	0.6		1	70 (70-70)	2.3		
I	38	72 (64-77)	22.8	22.6	3	77 (73-77)	7.0	7.0 *	Localised	32	72 (65-77)	19.0	19.9	2	75 (73-77)	4.7	4.7 *	
II	15	64 (60-69)	9.0	8.2	3	75 (50-81)	7.0	7.0 *	Regional	51	68 (60-73)	30.4	29.2	11	67 (62-75)	25.6	25.6 *	
III	29	70 (61-74)	17.4	18.3	7	67 (62-68)	16.3	16.3 *	Distant	85	67 (59-74)	50.6	50.9	30	70 (63-75)	69.8	69.8 *	
IV	85	67 (59-74)	50.9	50.9	30	70 (63-75)	69.8	69.8 *										
Canada, Saskatchewan	All patients	1165	70 (63-77)			242	68 (60-74)			All patients	1,165	70 (63-77)			242	68 (60-74)		
Missing	9	78 (74-81)	0.8		2	78 (66-89)	0.8		Missing	5	78 (72-84)	0.4		0	-		0.0	
I	261	69 (64-77)	22.6	21.8	4	69 (62-73)	1.7	1.7 *	Localised	190	69 (64-76)	16.4	16.7	4	69 (62-73)	1.7	1.7 *	
II	85	72 (66-75)	7.4	7.8	6	75 (67-84)	2.5	2.5 *	Regional	376	71 (64-76)	32.4	33.6	71	70 (61-78)	29.3	29.3 *	
III	216	71 (63-76)	18.7	20.4	63	69 (61-77)	26.3	26.3 *	Distant	594	70 (62-78)	51.2	49.7	167	67 (60-72)	69.0	69.0 *	
IV	594	70 (62-78)	51.4	50.0	167	67 (60-72)	69.6	69.6 *										
UK, England	All patients	44016	70 (63-77)			9113	69 (62-75)			All patients	44,016	70 (63-77)			9113	69 (62-75)		
Missing	16729	70 (63-78)	38.0		3554	69 (62-76)	39.0		Missing	12,715	71 (63-79)	28.9		3179	69 (62-76)	34.9		
I	5124	71 (65-77)	18.8	19.3	158	70 (63-78)	2.8	2.9	Localised	7,338	70 (64-76)	23.4	21.4	208	70 (63-78)	3.5	3.5	
II	2478	71 (64-77)	9.1	9.1	185	69 (63-75)	3.3	3.4	Regional	7,557	70 (63-77)	24.1	23.4	1030	69 (62-75)	17.4	17.1	
III	5819	70 (63-77)	21.3	21.0	1480	68 (62-75)	26.6	26.8	Distant	16,406	69 (62-77)	52.4	55.2	4696	68 (62-75)	79.1	79.4	
IV	13866	69 (62-77)	50.8	50.6	3736	69 (62-75)	67.2	66.9										
UK, Northern Ireland	All patients	1255	69 (61-76)			332	67 (60-74)			All patients	1,255	69 (61-76)			332	67 (60-74)		
Missing	51	74 (67-83)	4.1		60	68 (62-75)	18.1		Missing	41	73 (67-83)	3.3		56	68 (62-75)	16.9		
I	192	70 (63-76)	15.9	17.6	8	68 (53-69)	2.9	2.9 *	Localised	196	70 (63-76)	16.1	17.7	9	67 (54-69)	3.3	4.9	
II	134	69 (62-77)	11.1	11.8	12	71 (62-82)	4.4	4.4 *	Regional	440	69 (62-76)	36.2	37.3	94	68 (60-75)	34.1	35.9	
III	303	69 (62-75)	25.2	25.2	79	65 (60-74)	29.0	29.0 *	Distant	578	67 (60-75)	47.6	45.0	173	66 (61-72)	62.7	59.2	
IV	575	67 (60-75)	47.8	45.5	173	66 (61-72)	63.6	63.6 *										
UK, Scotland	All patients	6226	70 (63-76)			1721	68 (62-75)			All patients	6,226	70 (63-76)			1721	68 (62-75)		
Missing	731	73 (66-79)	11.7		274	69 (62-76)	15.9		Missing	512	74 (66-80)	8.2		212	69 (63-76)	12.3		
I	640	70 (63-75)	11.6	11.9	22	69 (63-75)	1.5											

Supplementary Table 17. Age-standardised^o one- and three-year net survival (%) by (imputed) stage at diagnosis and jurisdiction for non-small cell lung carcinoma patients diagnosed during 2010-2014, males

Stage	Canada, Alberta	Canada, British Columbia	Canada, Manitoba	Canada, New Brunswick	Canada, Newfoundland and Labrador	Canada, Nova Scotia	Canada, Ontario	Canada, Prince Edward Island	Canada, Saskatchewan	UK, England	UK, Northern Ireland	UK, Scotland	UK, Wales
All patients	46.5 (44.3 - 48.6)	47.0 (44.9 - 49.0)	48.6 (44.7 - 52.4)	53.9 (50.0 - 57.7)	47.6 (40.8 - 54.2)	48.4 (44.9 - 51.8)	48.1 (46.8 - 49.3)	40.5 (31.1 - 49.7)	48.5 (44.4 - 52.5)	40.8 (40.2 - 41.4)	39.7 (36.2 - 43.1)	42.0 (40.3 - 43.6)	39.7 (37.0 - 42.4)
TNM Stage													
Stage I	91.7 (88.9 - 94.4)	92.6 (90.4 - 94.8)	95.9 (90.9 - 100.0)	93.3 (90.1 - 96.5)	82.8 (73.0 - 92.6)	91.6 (87.5 - 95.8)	91.5 (89.9 - 93.0)	74.2 (43.9 - 89.8)**	88.3 (81.7 - 94.8)	88.5 (87.1 - 89.9)	82.2 (75.4 - 89.1)	92.3 (88.4 - 96.3)	87.3 (83.6 - 91.1)
Stage II	85.0 (80.0 - 90.1)	76.9 (70.3 - 83.6)	86.4 (80.6 - 92.1)	78.6 (68.7 - 88.5)	79.6 (68.0 - 91.3)	74.0 (65.7 - 82.4)	79.8 (76.9 - 82.7)	*	84.0 (76.4 - 91.7)	74.9 (72.7 - 77.1)	72.5 (64.0 - 81.0)	83.7 (81.1 - 86.4)	71.4 (64.4 - 78.4)
Stage III	56.9 (52.2 - 61.6)	53.8 (49.2 - 58.4)	56.0 (48.1 - 63.9)	62.2 (55.4 - 69.0)	61.3 (52.2 - 70.4)	59.2 (52.2 - 66.3)	54.9 (52.2 - 57.6)	43.9 (25.4 - 60.9)**	69.7 (62.2 - 77.2)	49.6 (48.2 - 51.0)	49.6 (42.8 - 56.3)	56.6 (53.3 - 60.0)	50.8 (44.8 - 56.8)
Stage IV	22.9 (20.5 - 25.2)	24.9 (22.6 - 27.2)	21.2 (17.2 - 25.2)	20.4 (16.4 - 24.4)	21.5 (15.9 - 27.1)	19.6 (15.9 - 23.3)	23.7 (22.2 - 25.1)	13.4 (6.3 - 23.1)**	24.0 (19.8 - 28.2)	19.4 (18.7 - 20.1)	17.0 (13.4 - 20.5)	15.9 (14.2 - 17.5)	17.7 (14.8 - 20.6)
Mapped SEER stage													
Localised	90.7 (87.3 - 94.2)	91.9 (88.8 - 94.9)	95.6 (92.0 - 99.2)	91.8 (87.9 - 95.7)	82.1 (72.4 - 91.8)	92.4 (88.1 - 96.7)	90.9 (89.1 - 92.6)	73.4 (51.5 - 95.3)	87.9 (80.2 - 95.6)	86.8 (85.6 - 88.0)	81.5 (74.5 - 88.4)	88.7 (86.4 - 91.1)	87.4 (83.5 - 91.2)
Regional	70.7 (67.4 - 73.9)	65.8 (62.6 - 69.1)	70.5 (64.5 - 76.6)	71.1 (66.1 - 76.1)	66.6 (58.7 - 74.5)	67.3 (62.5 - 72.1)	65.8 (63.6 - 68.0)	58.1 (44.6 - 71.6)	75.0 (69.4 - 80.6)	59.9 (58.6 - 61.3)	55.6 (49.5 - 61.7)	64.4 (61.8 - 67.1)	56.6 (52.0 - 61.2)
Distant	22.9 (20.5 - 25.3)	24.8 (22.5 - 27.1)	22.9 (18.9 - 26.9)	20.4 (16.4 - 24.4)	23.4 (17.8 - 29.1)	19.8 (16.0 - 23.5)	23.6 (22.1 - 25.1)	13.4 (4.9 - 21.8)	23.8 (19.6 - 27.9)	20.7 (20.1 - 21.4)	17.0 (13.5 - 20.5)	18.1 (16.5 - 19.8)	17.7 (14.8 - 20.5)
All patients	26.5 (24.6 - 28.5)	25.9 (24.1 - 27.8)	30.1 (26.5 - 33.9)	33.4 (30.0 - 36.8)	22.6 (17.3 - 28.4)	28.6 (25.6 - 31.7)	27.0 (25.9 - 28.1)	16.3 (10.1 - 23.8)	26.1 (22.1 - 30.2)	19.7 (19.3 - 20.2)	18.9 (16.5 - 21.5)	20.1 (18.8 - 21.4)	17.7 (15.6 - 19.9)
TNM Stage													
Stage I	74.9 (70.1 - 79.8)	72.6 (68.5 - 76.6)	78.9 (69.6 - 88.1)	74.9 (68.6 - 81.1)	64.4 (49.8 - 79.0)	67.5 (60.7 - 74.2)	76.2 (73.7 - 78.8)	57.1 (29.9 - 77.1)**	74.4 (65.3 - 83.5)	68.6 (66.5 - 70.7)	61.2 (52.7 - 69.6)	73.2 (67.3 - 79.0)	64.5 (58.4 - 70.7)
Stage II	55.2 (47.8 - 62.6)	52.4 (44.5 - 60.4)	68.5 (60.6 - 76.4)	48.5 (36.4 - 60.7)	50.1 (34.4 - 65.8)	46.6 (37.2 - 55.9)	54.7 (50.4 - 59.0)	*	61.2 (45.9 - 76.6)	48.2 (45.3 - 51.1)	41.1 (31.5 - 50.7)	53.6 (49.6 - 57.7)	40.2 (31.4 - 49.0)
Stage III	26.0 (21.8 - 30.3)	25.1 (21.5 - 28.8)	27.1 (20.0 - 34.3)	30.3 (23.7 - 36.9)	23.6 (15.5 - 31.6)	30.6 (22.5 - 38.6)	23.7 (20.8 - 26.6)	11.5 (3.9 - 23.5)**	31.3 (23.8 - 38.9)	17.8 (16.8 - 18.9)	18.6 (14.1 - 23.2)	22.6 (19.7 - 25.6)	18.3 (13.4 - 23.1)
Stage IV	7.3 (5.8 - 8.9)	8.1 (6.4 - 9.9)	4.3 (2.2 - 6.5)	4.6 (2.3 - 7.0)	3.1 (0.5 - 5.7)	7.7 (5.3 - 10.1)	6.5 (5.6 - 7.4)	4.0 (1.2 - 9.5)**	5.0 (2.6 - 7.3)	4.3 (3.9 - 4.7)	3.1 (1.6 - 4.7)	2.4 (1.7 - 3.0)	3.8 (2.2 - 5.5)
Mapped SEER stage													
Localised	67.9 (61.1 - 74.7)	71.8 (66.9 - 76.8)	79.9 (72.2 - 87.6)	72.6 (65.0 - 80.1)	65.0 (51.7 - 78.3)	68.4 (61.0 - 75.7)	75.7 (72.6 - 78.8)	60.7 (35.9 - 85.4)	74.2 (63.6 - 84.8)	65.6 (63.8 - 67.5)	60.7 (52.3 - 69.1)	65.3 (61.5 - 69.1)	63.8 (57.7 - 69.8)
Regional	43.7 (40.0 - 47.4)	39.1 (35.9 - 42.4)	44.8 (37.6 - 52.0)	42.3 (36.9 - 47.8)	30.2 (22.4 - 38.0)	38.0 (29.4 - 46.6)	37.4 (35.1 - 39.8)	15.7 (6.4 - 25.0)	42.1 (35.6 - 48.6)	27.5 (26.2 - 28.8)	26.6 (22.1 - 31.1)	31.8 (29.2 - 34.4)	23.8 (19.7 - 27.9)
Distant	7.4 (5.8 - 9.0)	8.1 (6.4 - 9.9)	7.0 (4.6 - 9.4)	4.8 (2.3 - 7.2)	3.9 (1.0 - 6.7)	7.7 (5.3 - 10.1)	6.5 (5.5 - 7.5)	4.0 (0.0 - 8.0)	5.1 (2.7 - 7.4)	4.2 (3.8 - 4.6)	3.2 (1.7 - 4.8)	3.1 (2.3 - 3.8)	4.0 (2.3 - 5.6)

^oNS = Net Survival; CI = Confidence Interval

* <30 patients

** Non-imputed results - imputation model did not converge

^o Standard population used for age-standardisation is International Cancer Survival Standard (ICSS-1) derived in Corazzari et al. (2004)

Supplementary Table 18. Age-standardised^o one- and three-year net survival (%) by (imputed) stage at diagnosis and jurisdiction for non-small cell lung carcinoma patients diagnosed during 2010-2014, females

Stage	Canada, Alberta	Canada, British Columbia	Canada, Manitoba	Canada, New Brunswick	Canada, Newfoundland and Labrador	Canada, Nova Scotia	Canada, Ontario	Canada, Prince Edward Island	Canada, Saskatchewan	UK, England	UK, Northern Ireland	UK, Scotland	UK, Wales
All patients	58.7 (56.7 - 60.7)	56.8 (54.9 - 58.6)	59.9 (56.2 - 63.4)	64.3 (60.9 - 67.5)	62.8 (57.0 - 68.1)	58.3 (54.8 - 61.6)	59.1 (58.0 - 60.2)	55.4 (46.0 - 63.9)	58.2 (54.6 - 61.6)	50.4 (49.8 - 51.0)	47.8 (44.3 - 51.1)	50.3 (48.6 - 52.0)	47.2 (44.7 - 49.6)
TNM Stage													
Stage I	96.2 (94.4 - 98.0)	94.7 (93.0 - 96.5)	98.7 (96.2 - 100.0)	93.0 (89.3 - 96.7)	96.0 (91.0 - 100.0)	95.1 (92.1 - 98.1)	93.9 (92.6 - 95.2)	98.4 (92.7 - 100.0)	92.0 (87.4 - 96.5)	92.5 (91.6 - 93.5)	86.7 (80.7 - 92.6)	96.3 (94.2 - 98.4)	89.3 (85.3 - 93.4)
Stage II	79.4 (73.7 - 85.1)	84.3 (80.2 - 88.4)	89.1 (84.1 - 94.1)	92.7 (87.2 - 98.3)	83.8 (73.5 - 94.2)	86.7 (78.0 - 95.4)	82.8 (78.9 - 86.7)	*	79.6 (68.9 - 90.3)	79.0 (76.8 - 81.2)	82.6 (75.2 - 90.1)	86.7 (84.1 - 89.3)	77.6 (70.9 - 84.3)
Stage III	66.8 (62.3 - 71.3)	62.1 (56.7 - 67.6)	66.5 (59.1 - 73.9)	61.1 (53.0 - 69.1)	62.9 (50.0 - 75.8)	63.8 (56.0 - 71.5)	63.2 (60.4 - 66.0)	70.0 (49.1 - 90.8)	64.7 (57.1 - 72.2)	55.0 (53.4 - 56.6)	46.7 (39.9 - 53.6)	59.8 (55.9 - 63.6)	50.2 (43.9 - 56.6)
Stage IV	31.4 (28.6 - 34.1)	33.3 (30.9 - 35.8)	22.8 (18.1 - 27.5)	23.5 (18.5 - 28.5)	32.0 (24.1 - 40.0)	22.1 (18.0 - 26.1)	31.4 (29.7 - 33.0)	23.8 (12.6 - 35.0)	33.0 (28.4 - 37.7)	25.6 (24.7 - 26.4)	18.9 (15.2 - 22.7)	21.1 (19.0 - 23.2)	21.8 (18.5 - 25.0)
Mapped SEER stage													
Localised	96.7 (94.6 - 98.8)	95.1 (93.1 - 97.2)	97.1 (92.8 - 98.8)**	95.3 (91.7 - 98.9)	94.8 (89.9 - 99.8)	94.8 (91.5 - 98.1)	93.4 (91.8 - 95.0)	97.9 (91.0 - 100.0)	91.9 (86.2 - 97.5)	91.6 (90.8 - 92.4)	86.9 (81.0 - 92.9)	94.0 (92.4 - 95.7)	89.4 (85.5 - 93.4)
Regional	76.2 (73.3 - 79.1)	73.8 (70.9 - 76.7)	77.7 (71.7 - 82.5)**	77.9 (73.3 - 82.5)	67.0 (53.1 - 80.8)	74.8 (69.5 - 80.2)	72.8 (70.8 - 74.8)	75.4 (60.1 - 90.7)	73.2 (67.8 - 78.5)	63.6 (62.2 - 64.9)	57.7 (52.2 - 63.2)	66.0 (62.7 - 69.3)	58.4 (53.6 - 63.2)
Distant	31.3 (28.5 - 34.1)	33.3 (30.9 - 35.8)	26.3 (21.7 - 31.1)**	31.6 (26.4 - 36.9)	40.8 (32.9 - 48.6)	22.1 (18.0 - 26.2)	31.3 (29.7 - 32.9)	24.5 (13.2 - 35.8)	35.2 (30.4 - 39.9)	26.7 (26.0 - 27.5)	19.0 (15.2 - 22.8)	22.4 (20.3 - 24.5)	21.7 (18.5 - 24.9)
All patients	36.2 (34.1 - 38.3)	34.1 (32.3 - 36.0)	41.5 (38.0 - 45.0)	43.5 (38.7 - 48.1)	39.7 (33.2 - 46.0)	37.8 (34.4 - 41.2)	36.9 (35.7 - 38.1)	31.8 (23.3 - 40.6)	36.6 (33.1 - 40.1)	28.3 (27.8 - 28.9)	27.1 (24.0 - 30.3)	27.9 (26.4 - 29.5)	26.8 (24.6 - 29.0)
TNM Stage													
Stage I	73.9 (62.4 - 85.4)	83.3 (78.8 - 87.7)	87.0 (80.8 - 93.3)	78.2 (72.2 - 84.1)	84.3 (73.5 - 95.1)	77.6 (72.2 - 82.9)	82.5 (80.4 - 84.6)	76.0 (55.7 - 96.3)	82.4 (76.3 - 88.5)	76.3 (74.6 - 78.1)	67.6 (59.0 - 76.2)	81.4 (77.0 - 85.8)	73.5 (67.6 - 79.4)
Stage II	58.1 (50.3 - 65.9)	62.1 (56.5 - 67.7)	70.1 (63.1 - 77.0)	60.4 (49.5 - 71.2)	66.0 (52.5 - 79.5)	69.9 (58.2 - 81.5)	59.4 (54.8 - 64.0)	*	52.7 (38.6 - 66.8)	52.4 (49.6 - 55.3)	51.6 (40.6 - 62.7)	60.1 (55.7 - 64.5)	49.9 (39.8 - 60.1)
Stage III	31.5 (27.0 - 36.0)	29.6 (23.1 - 36.1)	32.3 (25.0 - 39.7)	32.5 (24.6 - 40.4)	28.7 (15.8 - 41.6)	29.4 (22.3 - 36.4)	30.4 (27.5 - 33.4)	28.7 (4.6 - 52.8)	30.9 (23.2 - 38.6)	22.5 (20.7 - 24.3)	18.7 (13.0 - 24.4)	23.7 (19.9 - 27.5)	21.1 (16.0 - 26.2)
Stage IV	10.4 (8.4 - 12.4)	11.0 (9.3 - 12.8)	7.1 (4.3 - 9.9)	9.2 (5.8 - 12.7)	7.7 (2.1 - 13.3)	4.9 (2.7 - 7.1)	8.6 (7.5 - 9.7)	6.3 (0.0 - 12.7)	10.3 (7.3 - 13.3)	6.0 (5.4 - 6.6)	3.6 (1.9 - 5.4)	4.3 (3.3 - 5.3)	6.0 (4.0 - 8.0)
Mapped SEER stage													
Localised	82.7 (78.5 - 86.9)	85.6 (82.2 - 89.0)	86.9 (81.0 - 91.2)**	80.0 (73.2 - 86.7)	85.4 (76.2 - 94.7)	77.3 (71.6 - 83.0)	81.8 (79.4 - 84.2)	78.8 (55.3 - 100.0)	82.8 (75.5 - 90.1)	73.9 (72.4 - 75.5)	67.4 (58.7 - 76.1)	74.3 (70.8 - 77.7)	73.3 (67.5 - 79.1)
Regional	45.4 (41.2 - 49.6)	46.6 (42.7 - 50.5)	52.0 (45.7 - 58.0)**	50.7 (43.6 - 57.9)	42.4 (30.7 - 54.1)	47.4 (41.3 - 53.4)	45.6 (43.2 - 47.9)	36.5 (19.6 - 53.5)	48.5 (42.5 - 54.5)	30.8 (29.4 - 32.2)	28.7 (23.2 - 34.3)	31.7 (28.0 - 35.3)	28.8 (24.0 - 33.7)
Distant	10.4 (8.4 - 12.4)	10.9 (9.1 - 12.7)	8.6 (6.0 - 11.7)**	13.6 (6.2 - 21.0)	7.4 (0.0 - 18.1)	4.9 (2.7 - 7.0)	8.5 (7.5 - 9.6)	6.4 (0.0 - 12.8)	11.5 (8.2 - 14.8)	5.6 (5.1 - 6.0)	3.5 (1.8 - 5.2)	4.8 (3.9 - 5.8)	6.1 (4.1 - 8.2)

[†]NS = Net Survival; CI = Confidence Interval

* <30 patients

** Non-imputed results - imputation model did not converge

^o Standard population used for age-standardisation is International Cancer Survival Standard (ICSS-1) derived in Corazziari et al. (2004)

Supplementary Table 19. Age-standardised* one- and three-year net survival (%) by (imputed) stage at diagnosis and jurisdiction for small cell lung carcinoma patients diagnosed during 2010-2014, males

Stage	Canada, Alberta	Canada, British Columbia	Canada, Manitoba	Canada, New Brunswick	Canada, Newfoundland and Labrador	Canada, Nova Scotia	Canada, Ontario	Canada, Prince Edward Island	Canada, Saskatchewan	UK, England	UK, Northern Ireland	UK, Scotland	UK, Wales
All patients	31.3 (26.6 - 36.1)	25.5 (16.9 - 35.0)	27.2 (20.2 - 34.7)	27.7 (20.6 - 35.4)	29.4 (20.8 - 38.5)	22.5 (15.7 - 30.0)	27.9 (24.7 - 31.1)	27.2 (11.8 - 45.4)	26.4 (19.1 - 34.3)	25.6 (24.3 - 26.9)	18.7 (13.2 - 25.0)	25.0 (22.1 - 28.0)	20.3 (16.1 - 24.9)
TNM Stage													
Stage I	*	*	*	*	*	*	84.8 (73.9 - 95.7)	*	*	74.6 (67.1 - 82.2)	*	*	*
Stage II	*	*	*	*	*	*	72.0 (57.2 - 86.8)	*	*	67.7 (60.3 - 75.1)	*	60.7 (43.7 - 77.7)	*
Stage III	57.2 (46.8 - 67.7)	41.1 (31.9 - 50.0)**	43.1 (21.9 - 62.7)**	54.7 (37.0 - 69.4)**	61.7 (35.8 - 79.7)**	23.8 (8.5 - 43.2)**	52.2 (46.3 - 58.1)	*	44.9 (26.7 - 61.5)**	44.2 (41.5 - 47.0)	33.9 (21.8 - 46.5)**	44.9 (37.8 - 52.1)	39.2 (27.1 - 51.0)**
Stage IV	15.8 (11.6 - 20.0)	19.6 (15.4 - 24.1)**	12.9 (7.3 - 20.2)**	15.5 (9.4 - 23.0)**	13.8 (7.1 - 22.8)**	15.8 (10.2 - 22.6)**	17.3 (14.9 - 19.7)	21.6 (8.2 - 39.1)** °	17.9 (11.7 - 25.3)**	15.8 (14.7 - 16.9)	10.2 (5.9 - 15.9)**	14.1 (11.4 - 16.8)	10.0 (6.7 - 14.0)**
Mapped SEER stage													
Localised	*	*	*	*	*	*	89.8 (80.2 - 99.4)	*	*	70.6 (63.4 - 77.9)	*	56.7 (38.1 - 75.3)	*
Regional	62.0 (52.0 - 70.5)**	45.4 (36.8 - 53.6)**	54.8 (35.2 - 70.7)**	56.4 (39.4 - 70.3)**	57.0 (32.3 - 75.6)**	32.2 (15.3 - 50.3)**	54.9 (49.4 - 60.3)	*	46.6 (29.5 - 62.1)**	51.0 (47.6 - 54.5)	37.2 (25.3 - 49.1)**	44.3 (36.5 - 52.2)	39.0 (27.1 - 50.6)**
Distant	17.6 (13.1 - 22.6)**	17.7 (12.2 - 24.1)**	15.8 (9.6 - 23.2)**	15.5 (9.4 - 23.0)**	16.8 (9.3 - 26.1)**	15.8 (10.2 - 22.6)**	17.1 (14.8 - 19.5)	23.9 (8.5 - 43.7)**	17.9 (11.7 - 25.3)**	18.6 (17.5 - 19.8)	10.9 (6.5 - 16.7)**	17.1 (14.3 - 19.9)	10.0 (6.7 - 14.0)**
All patients	8.9 (6.0 - 12.4)	12.0 (7.8 - 17.3)	6.8 (3.4 - 11.7)	12.4 (7.8 - 18.2)	13.4 (7.3 - 21.2)	4.1 (1.6 - 8.4)	9.6 (7.4 - 12.1)	6.0 (0.6 - 21.7)	4.3 (1.5 - 9.4)	6.4 (5.7 - 7.2)	4.7 (2.5 - 8.0)	5.7 (4.2 - 7.6)	5.9 (3.9 - 8.5)
TNM Stage													
Stage I	*	*	*	*	*	*	62.1 (43.7 - 80.4)	*	*	36.6 (26.5 - 46.7)	*	*	*
Stage II	*	*	*	*	*	*	35.2 (17.0 - 53.4)	*	*	31.8 (24.3 - 39.4)	*	27.8 (12.9 - 42.8)	*
Stage III	16.4 (7.7 - 25.1)	8.7 (4.0 - 15.7)**	10.8 (2.5 - 26.3)**	25.2 (12.4 - 40.4)**	20.0 (5.4 - 41.2)**	3.0 (0.4 - 11.1)**	19.1 (14.1 - 24.0)	*	20.6 (7.6 - 37.9)**	12.0 (10.2 - 13.9)	8.7 (3.2 - 17.8)**	12.0 (7.0 - 17.0)	11.0 (5.9 - 17.8)**
Stage IV	4.0 (1.8 - 6.1)	5.7 (3.3 - 9.0)**	0.9 (0.1 - 3.8)**	3.6 (1.2 - 8.5)**	9.9 (4.4 - 18.1)**	3.2 (1.2 - 6.7)**	3.4 (2.2 - 4.5)	5.0 (0.4 - 19.4)** °	0.5 (0.0 - 3.4)**	2.1 (1.7 - 2.6)	0.4 (0.0 - 3.2)**	1.4 (0.5 - 2.3)	1.7 (0.6 - 4.0)**
Mapped SEER stage													
Localised	*	*	*	*	*	*	59.8 (38.2 - 81.4)	*	*	35.9 (27.9 - 44.0)	*	27.7 (12.4 - 43.0)	*
Regional	21.1 (12.4 - 31.3)**	14.4 (8.7 - 21.4)**	17.5 (5.6 - 34.7)**	24.6 (13.3 - 37.6)**	21.9 (5.7 - 44.7)**	4.1 (0.7 - 12.7)**	22.4 (17.5 - 27.3)	*	23.1 (10.1 - 39.1)**	17.2 (13.9 - 20.5)	13.4 (6.6 - 22.6)**	14.8 (8.7 - 20.9)	12.6 (7.3 - 19.6)**
Distant	3.7 (1.7 - 7.0)**	5.1 (2.8 - 8.4)**	2.1 (0.5 - 5.7)**	3.6 (1.2 - 8.5)**	8.1 (3.2 - 16.0)**	3.2 (1.2 - 6.7)**	3.3 (2.1 - 4.4)	7.8 (0.8 - 26.0)**	0.5 (0.0 - 3.4)**	2.8 (2.3 - 3.3)	0.4 (0.0 - 3.2)**	2.3 (1.2 - 3.3)	1.7 (0.6 - 4.0)**

*NS = Net Survival; CI = Confidence Interval

* <30 patients

** Non-imputed results - imputation model did not converge

° No age standardisation

* Standard population used for age-standardisation is International Cancer Survival Standard (ICSS-1) derived in Corazzari et al. (2004)

Supplementary Table 20. Age-standardised[†] one- and three-year net survival (%) by (imputed) stage at diagnosis and jurisdiction for small cell lung carcinoma patients diagnosed during 2010-2014, females

Stage	Canada, Alberta	Canada, British Columbia	Canada, Manitoba	Canada, New Brunswick	Canada, Newfoundland and Labrador	Canada, Nova Scotia	Canada, Ontario	Canada, Prince Edward Island	Canada, Saskatchewan	UK, England	UK, Northern Ireland	UK, Scotland	UK, Wales
All patients	39.0 (34.4 - 43.6)	35.0 (29.8 - 40.3)	35.6 (28.5 - 42.8)	40.9 (31.9 - 49.6)	36.7 (25.8 - 47.7)	28.3 (21.4 - 35.7)	41.0 (37.6 - 44.3)	33.3 (11.3 - 57.5)	40.7 (32.6 - 48.6)	31.5 (30.1 - 33.0)	27.2 (21.4 - 33.3)	29.6 (26.0 - 33.3)	33.3 (29.0 - 37.6)
TNM Stage													
Stage I	*	*	*	*	*	*	81.0 (65.5 - 90.0)**	*	*	80.4 (73.8 - 87.1)	*	*	*
Stage II	*	*	*	*	*	*	75.4 (58.7 - 86.2)**	*	*	69.9 (63.0 - 76.8)	*	76.5 (60.7 - 92.3)	*
Stage III	56.8 (46.4 - 67.3)	57.6 (49.3 - 65.1)**	53.2 (38.6 - 65.8)**	57.0 (35.0 - 74.0)**	*	50.4 (34.3 - 64.5)**	56.6 (51.3 - 61.6)**	*	63.9 (46.5 - 76.9)**	51.0 (48.5 - 53.5)	42.2 (28.8 - 55.0)**	52.8 (47.1 - 58.5)	46.8 (37.7 - 55.3)**
Stage IV	20.8 (16.0 - 25.6)	16.7 (8.5 - 27.2)**	19.1 (12.1 - 27.4)**	28.3 (19.1 - 38.2)**	26.2 (15.3 - 38.5)**	17.0 (11.5 - 23.4)**	27.3 (24.1 - 30.5)**	32.0 (11.1 - 55.4)** °	25.5 (17.4 - 34.3)**	19.3 (18.0 - 20.5)	17.8 (11.5 - 25.4)**	18.2 (15.4 - 21.0)	16.5 (12.4 - 21.2)**
Mapped SEER stage													
Localised	*	*	*	*	*	*	76.7 (63.2 - 90.3)	*	*	75.6 (69.0 - 82.2)	*	78.2 (65.4 - 91.1)	*
Regional	63.1 (54.1 - 70.8)**	61.6 (54.1 - 68.3)**	58.7 (44.2 - 70.6)**	62.0 (42.9 - 76.3)**	51.1 (19.3 - 76.0)**	55.3 (40.0 - 68.1)**	58.8 (54.2 - 63.5)	*	66.3 (49.4 - 78.7)**	59.0 (55.8 - 62.2)	40.2 (29.0 - 51.5)	58.4 (51.8 - 65.0)	47.3 (38.5 - 55.5)**
Distant	19.8 (15.4 - 24.7)**	16.7 (8.5 - 27.2)**	23.0 (15.6 - 31.2)**	28.3 (19.1 - 38.2)**	25.9 (15.3 - 37.8)**	17.0 (11.5 - 23.4)**	27.1 (24.0 - 30.2)	23.9 (4.9 - 50.8)**	25.5 (17.4 - 34.3)**	23.2 (22.0 - 24.5)	14.9 (9.1 - 20.8)	21.6 (18.9 - 24.4)	16.5 (12.4 - 21.2)**
All patients	13.6 (8.9 - 19.2)	11.2 (7.5 - 15.6)	14.8 (10.0 - 20.6)	14.0 (8.8 - 20.3)	9.1 (3.4 - 18.1)	11.5 (7.0 - 17.1)	14.8 (12.3 - 17.5)	13.5 (2.6 - 33.5)	15.2 (9.9 - 21.6)	9.2 (8.4 - 10.2)	7.3 (4.1 - 11.6)	9.4 (7.6 - 11.3)	8.3 (3.4 - 15.7)
TNM Stage													
Stage I	*	*	*	*	*	*	55.8 (36.4 - 71.5)**	*	*	51.6 (40.4 - 62.8)	*	*	*
Stage II	*	*	*	*	*	*	35.7 (17.9 - 54.1)**	*	*	37.5 (28.0 - 46.9)	*	33.1 (16.9 - 49.4)	*
Stage III	22.3 (13.7 - 30.8)	22.1 (14.2 - 31.1)**	17.3 (8.5 - 28.7)**	20.9 (8.6 - 36.8)**	*	24.8 (13.5 - 38.0)**	23.6 (19.0 - 28.5)**	*	24.5 (12.5 - 38.6)**	15.6 (13.7 - 17.6)	14.0 (6.4 - 24.4)**	16.8 (12.1 - 21.5)	13.1 (8.2 - 19.1)**
Stage IV	3.0 (1.1 - 5.0)	2.8 (1.1 - 5.8)**	8.4 (4.1 - 14.4)**	5.7 (2.1 - 11.7)**	4.2 (0.7 - 12.8)**	3.5 (1.2 - 7.7)**	5.1 (3.6 - 6.9)**	**	8.1 (3.8 - 14.5)**	3.1 (2.4 - 3.8)	2.6 (0.5 - 8.2)**	3.1 (1.7 - 4.4)	4.5 (2.5 - 7.4)**
Mapped SEER stage													
Localised	*	*	*	*	*	*	53.0 (35.0 - 71.0)	*	*	48.5 (41.0 - 55.9)	*	11.5 (0.0 - 31.4)	*
Regional	30.2 (21.9 - 38.9)**	24.6 (17.0 - 33.0)**	26.1 (14.3 - 39.6)**	24.6 (12.9 - 38.4)**	17.0 (2.2 - 44.0)**	30.2 (18.2 - 43.1)**	26.7 (22.3 - 31.1)	*	25.8 (14.1 - 39.2)**	20.0 (17.3 - 22.7)	13.1 (6.0 - 20.3)	13.1 (6.0 - 20.3)	15.1 (10.0 - 21.2)**
Distant	2.8 (1.4 - 5.0)**	2.8 (1.1 - 5.8)**	8.7 (4.7 - 14.3)**	5.7 (2.1 - 11.7)**	3.8 (0.7 - 11.8)**	3.5 (1.2 - 7.7)**	5.2 (3.6 - 6.7)	**	8.1 (3.8 - 14.5)**	4.7 (4.0 - 5.4)	2.8 (0.0 - 5.8)	2.8 (0.0 - 5.8)	4.5 (2.5 - 7.4)**

[†]NS = Net Survival; CI = Confidence Interval

* <30 patients

** Non-imputed results - imputation model did not converge

° No age standardisation

[†] Standard population used for age-standardisation is International Cancer Survival Standard (ICSS-1) derived in Corazziari et al. (2004)