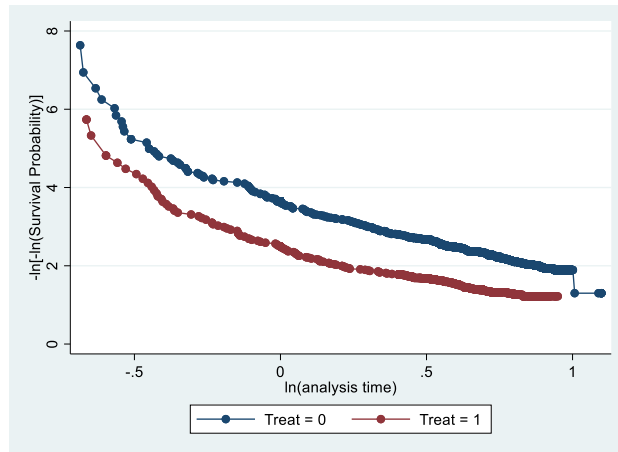


## Appendix 1

**Figure S1: Log-minus-log plot for lobectomy and SABR 6 months after date of procedure and Schoenfeld p-value.**

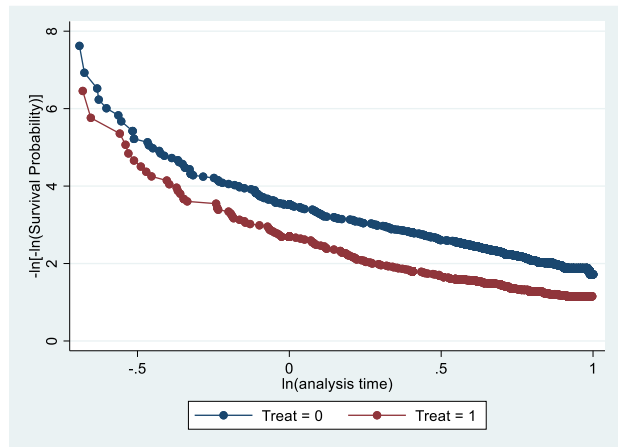


Test of proportional-hazards assumption

Time: Time

	chi2	df	Prob>chi2
global test	11.35	16	0.7874

**Figure S2: Log-minus-log plot for lobectomy and SABR 6 months after date of diagnosis and Schoenfeld p-value**



Test of proportional-hazards assumption

Time: Time

	chi2	df	Prob>chi2
global test	12.65	16	0.6978

**Table S1: Regression analysis from date of procedure till death at 90 days, 6 months, one year and overall in patients aged <80 years, PS 0 or 1 and stage IA only**

	Total number of patients	Adjusted odds ratio at 90 days after procedure (95% CI)	Adjusted odds ratio at 180 days after procedure (95% CI)	Adjusted odds ratio at 365 days after procedure (95% CI)	Adjusted odd ratios at 730 days after procedure (95% CI)‡
<b>Type of Treatment</b>					
Lobectomy	954	1	1	1	1
SABR	138	0.42 (0.05 - 3.40)	1.30 (0.30 - 5.51)	2.42 (1.03 - 5.67)	2.00 (1.03 - 3.87)
<b>Sex</b>					
Female	613	1	1	1	1
Male	479	1.63 (0.52 - 5.14)	1.83 (0.77 - 4.35)	1.72 (0.97 - 3.06)	1.99 (1.31 - 3.02)‡
<b>Age</b>					
<65	352	1	1	1	1
65-80	740	2.21 (0.47 - 10.3)	1.46 (0.52 - 4.09)	1.32 (0.68 - 2.57)	1.27 (0.79 - 2.05)
<b>Performance status</b>					
0	553	1	1	1	1
1	539	0.96 (0.30 - 3.02)	1.32 (0.54 - 3.24)	1.51 (0.82 - 2.77)	1.82 (1.17 - 2.84)‡
<b>Charlson Index</b>					
0	420	1	1	1	1
1	256	0.54 (0.05 - 5.26)	0.37 (0.07 - 1.77)	1.25 (0.58 - 2.69)	1.15 (0.65 - 2.04)
2-3	253	2.57 (0.59 - 11.1)	1.16 (0.40 - 3.36)	0.87 (0.38 - 1.95)	1.21 (0.69 - 2.09)
4+	163	3.20 (0.68 - 15.0)	1.44 (0.47 - 4.44)	1.46 (0.66 - 3.23)	1.35 (0.74 - 2.46)
<b>Socioeconomic Status</b>					
1	168	1	1	1	1
2	204	-	1.50 (0.27 - 8.42)	2.44 (0.64 - 9.28)	1.54 (0.66 - 3.58)
3	230	-	1.39 (0.25 - 7.79)	2.55 (0.68 - 9.54)	1.64 (0.71 - 3.76)
4	236	-	2.15 (0.42 - 11.0)	3.33 (0.92 - 11.9)	1.96 (0.87 - 4.39)
5 (most deprived)	254	-	2.27 (0.45 - 11.3)	3.92 (1.10 - 13.9)	2.98 (1.37 - 6.50)‡
<b>Pathology confirmed diagnosis</b>					
No	73	1	1	1	1
Yes	1019	-	1.33 (0.19 - 9.15)	1.47 (0.46 - 4.63)	1.13 (0.47 - 2.67)
<b>Laterality</b>					
Left	439	1	1	1	1
Right	653	0.55 (0.18 - 1.66)	0.72 (0.31 - 1.68)	0.90 (0.51 - 1.60)	0.75 (0.49 - 1.12)

‡ Significant at 99% Confidence intervals

- Unable to calculate due to low numbers

Results mutually adjusted for all the patient features in the table

The results of logistic regression from date of procedure to 90 days, 6 months, one year and 2 years in patients who were less than 80 years, PS 0 or 1 and stage IA are presented in S1 table. Overall, patients undergoing SABR were 2 times more likely to die after procedure which was only significant at 95% CI. There was no difference between the two groups at 90 days, 6 months and one year after the procedure by age, charlson index, pathologically confirmed diagnosis, laterality and affluent socioeconomic groups. Male sex, PS 1 and most deprived socioeconomic status were the only three characteristics that were significant at 99% confidence interval.

**Table S2: Regression analysis from date of diagnosis till death at 90 days, 6 months, one year and overall in patients aged <80 years, PS 0 or 1 and stage IA only**

	Total number of patients	Adjusted odds ratio at 90 days after procedure (95% CI)	Adjusted odds ratio at 180 days after procedure (95% CI)	Adjusted odds ratio at 365 days after procedure (95% CI)	Adjusted odd ratios at 730 days after procedure (95% CI)‡
<b>Type of Treatment</b>					
Lobectomy	954	1	1	1	1
SABR	138	1.02 (0.12 - 8.62)	0.71 (0.08 - 5.72)	1.73 (0.65 - 4.61)	1.62 (0.80 - 3.24)
<b>Sex</b>					
Female	613	1	1	1	1
Male	479	1.48 (0.45 - 4.87)	1.58 (0.58 - 4.30)	1.64 (0.87 - 3.09)	1.86 (1.22 - 2.83)‡
<b>Age</b>					
<65	352	1	1	1	1
65-80	740	2.30 (0.48 - 10.9)	1.40 (0.43 - 4.49)	1.69 (0.78 - 3.64)	1.25 (0.78 - 2.02)
<b>Performance status</b>					
0	553	1	1	1	1
1	539	0.71 (0.21 - 2.38)	1.23 (0.44 - 3.42)	1.67 (0.86 - 3.26)	1.78 (1.14 - 2.77)
<b>Charlson Index</b>					
0	420	1	1	1	1
1	256	0.45 (0.04 - 4.50)	0.26 (0.03 - 2.28)	0.88 (0.35 - 2.19)	1.18 (0.66 - 2.10)
2-3	253	2.23 (0.49 - 9.98)	1.45 (0.42 - 5.03)	0.91 (0.38 - 2.17)	1.17 (0.67 - 2.06)
4+	163	2.08 (0.38 - 11.1)	2.02 (0.45 - 7.45)	1.84 (0.80 - 4.22)	1.45 (0.79 - 2.63)
<b>Socioeconomic Status</b>					
1	168	1	1	1	1
2	204	-	-	3.29 (0.68 - 15.8)	1.35 (0.57 - 3.19)
3	230	-	-	2.97 (0.61 - 14.3)	1.61 (0.70 - 3.68)
4	236	-	-	3.96 (0.85 - 18.4)	1.94 (0.86 - 4.38)
5 (most deprived)	254	-	-	5.04 (1.11 - 22.7)	2.81 (1.29 - 6.12)‡
<b>Pathology confirmed diagnosis</b>					
No	73	1	1	1	1
Yes	1019	-	-	2.35 (0.53 - 10.2)	1.01 (0.41 - 2.49)
<b>Laterality</b>					
Left	439	1	1	1	1
Right	653	0.45 (0.14 - 1.47)	0.72 (0.27 - 1.90)	1.10 (0.58 - 2.08)	0.79 (0.52 - 1.19)

‡ Significant at 99% Confidence intervals

- Unable to calculate due to low numbers

Results mutually adjusted for all the patient features in the table

The results of logistic regression from date of diagnosis to 90 days, 6 months, one year and 2 years in patients who were less than 80 years, PS 0 or 1 and stage IA are presented in S2 table.

**Table S3: Regression analysis from date of procedure till death at 90 days, 6 months, one year and two years with 99% confidence intervals**

	Total number of patients	Adjusted odds ratio at 90 days after procedure (99% CI)	Adjusted odds ratio at 180 days after procedure (99% CI)	Adjusted odds ratio at 365 days after procedure (99% CI)	Adjusted odd ratio at 730 days after procedure (99% CI)
<b>Type of Treatment</b>					
Lobectomy	1897	1	1	1	1
SABR	476	0.63 (0.15 - 2.55)	0.88 (0.34 - 2.26)	2.12 (1.18 - 3.80)	2.20 (1.40 - 3.45)
<b>Sex</b>					
Female	1259	1	1	1	1
Male	1114	1.50 (0.70 - 3.20)	1.32 (0.74 - 2.36)	1.38 (0.92 - 2.07)	1.54 (1.13 - 2.09)
<b>Age</b>					
<65	621	1	1	1	1
65-80	1470	1.76 (0.61 - 5.04)	1.64 (0.71 - 3.75)	1.34 (0.78 - 2.31)	1.09 (0.74 - 1.61)
>80	282	2.57 (0.63 - 10.4)	2.54 (0.89 - 7.25)	1.74 (0.85 - 3.56)	1.76 (1.04 - 2.97)
<b>Performance status</b>					
0	957	1	1	1	1
1	1064	1.63 (0.68 - 3.92)	1.77 (0.87 - 3.61)	1.38 (0.84 - 2.27)	1.46 (1.01 - 2.11)
2	352	1.64 (0.46 - 5.78)	2.55 (1.02 - 6.37)	1.85 (0.99 - 3.46)	2.34 (1.47 - 3.72)
<b>Stage</b>					
IA	1432	1	1	1	1
IB	941	2.06 (0.95 - 4.47)	2.07 (1.14 - 3.74)	1.85 (1.22 - 2.80)	2.03 (1.48 - 2.78)
<b>Charlson Index</b>					
0	894	1	1	1	1
1	580	1.12 (0.43 - 2.92)	0.97 (0.46 - 2.03)	1.22 (0.72 - 2.07)	1.37 (0.91 - 2.07)
2-3	568	0.94 (0.34 - 2.58)	0.84 (0.39 - 1.82)	0.94 (0.54 - 1.64)	1.28 (0.85 - 1.93)
4+	331	0.98 (0.29 - 3.29)	0.89 (0.35 - 2.23)	1.33 (0.72 - 2.42)	1.78 (1.12 - 2.80)
<b>Socioeconomic Status</b>					
1	365	1	1	1	1
2	435	2.05 (0.43 - 9.63)	1.23 (0.45 - 3.30)	1.37 (0.63 - 2.95)	1.11 (0.63 - 1.96)
3	460	1.42 (0.27 - 7.31)	0.87 (0.30 - 2.52)	1.29 (0.59 - 2.79)	1.16 (0.66 - 2.03)
4	527	2.92 (0.67 - 12.6)	1.40 (0.54 - 3.61)	1.68 (0.81 - 3.47)	1.49 (0.88 - 2.54)
5 (most deprived)	586	2.14 (0.47 - 9.69)	0.98 (0.36 - 2.64)	1.72 (0.84 - 3.52)	1.72 (1.02 - 2.88)
<b>Pathology confirmed diagnosis</b>					
No	240	1	1	1	1
Yes	2133	1.06 (0.18 - 6.14)	0.92 (0.30 - 2.81)	1.05 (0.53 - 2.06)	1.05 (0.62 - 1.78)
<b>Laterality</b>					
Left	941	1	1	1	1
Right	1432	1.11 (0.51 - 2.39)	0.93 (0.52 - 1.67)	1.04 (0.69 - 1.57)	0.93 (0.69 - 1.27)

**Table S4: Regression analysis from date of diagnosis till death at 90 days, 6 months, one year and two years with 99% confidence intervals**

	Total number of patients	Adjusted odds ratio at 90 days after procedure (99% CI)	Adjusted odds ratio at 180 days after procedure (99% CI)	Adjusted odds ratio at 365 days after procedure (99% CI)	Adjusted odds ratio at 730 days after procedure (99% CI)
<b>Type of Treatment</b>					
Lobectomy	1897	1	1	1	1
SABR	476	0.26 (0.01 - 3.88)	0.29 (0.06 - 1.36)	1.25 (0.63 - 2.45)	1.89 (1.19 - 3.01)
<b>Sex</b>					
Female	1259	1	1	1	1
Male	1114	1.40 (0.56 - 3.48)	1.46 (0.72 - 2.94)	1.46 (0.94 - 2.27)	1.47 (1.08 - 2.00)
<b>Age</b>					
<65	621	1	1	1	1
65-80	1470	2.27 (0.62 - 8.29)	1.74 (0.67 - 4.49)	1.58 (0.86 - 2.88)	1.09 (0.74 - 1.62)
>80	282	2.95 (0.47 - 18.4)	2.89 (0.79 - 10.5)	2.11 (0.96 - 4.67)	1.59 (0.93 - 2.72)
<b>Performance status</b>					
0	957	1	1	1	1
1	1064	1.35 (0.52 - 3.47)	1.70 (0.75 - 3.86)	1.54 (0.90 - 2.62)	1.52 (1.04 - 2.20)
2	352	0.30 (0.02 - 4.70)	2.62 (0.87 - 7.87)	2.22 (1.12 - 4.37)	2.35 (1.46 - 3.78)
<b>Stage</b>					
IA	1432	1	1	1	1
IB	941	2.15 (0.85 - 5.42)	2.05 (1.01 - 4.19)	1.93 (1.23 - 3.00)	2.00 (1.46 - 2.75)
<b>Charlson Index</b>					
0	894	1	1	1	1
1	580	1.18 (0.37 - 3.74)	0.91 (0.36 - 2.27)	1.22 (0.69 - 2.16)	1.32 (0.88 - 2.00)
2-3	568	1.23 (0.38 - 3.94)	0.95 (0.38 - 2.37)	0.90 (0.49 - 1.65)	1.17 (0.77 - 1.77)
4+	331	0.99 (0.21 - 4.73)	1.05 (0.35 - 3.12)	1.42 (0.75 - 2.70)	1.67 (1.05 - 2.64)
<b>Socioeconomic Status</b>					
1	365	1	1	1	1
2	435	1.96 (0.32 - 11.8)	1.82 (0.44 - 7.50)	1.47 (0.66 - 3.26)	1.19 (0.67 - 2.13)
3	460	1.41 (0.21 - 9.51)	1.50 (0.34 - 6.48)	1.01 (0.43 - 2.35)	1.20 (0.67 - 2.13)
4	527	2.60 (0.46 - 14.6)	2.39 (0.61 - 9.24)	1.51 (0.69 - 3.27)	1.53 (0.89 - 2.60)
5 (most deprived)	586	2.47 (0.43 - 14.0)	2.41 (0.63 - 9.25)	1.62 (0.76 - 3.46)	1.78 (1.05 - 3.03)
<b>Pathology confirmed diagnosis</b>					
No	240	1	1	1	1
Yes	2133	-	1.78 (0.19 - 16.4)	0.98 (0.44 - 2.16)	0.92 (0.54 - 1.59)
<b>Laterality</b>					
Left	941	1	1	1	1
Right	1432	1.01 (0.41 - 2.52)	0.91 (0.45 - 1.83)	1.11 (0.71 - 1.74)	0.94 (0.69 - 1.28)