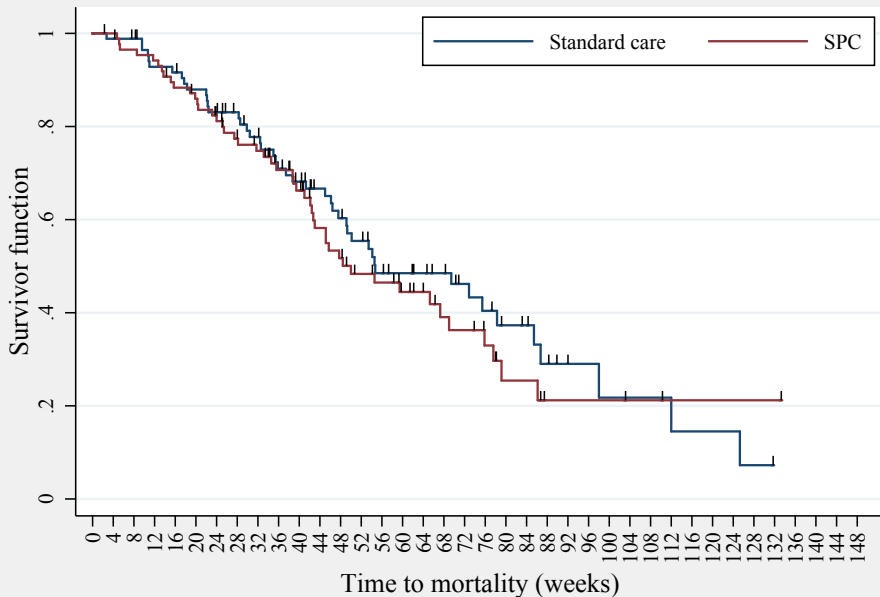


Overall survival



Number at risk

treat = Standard Care

87 86 84 77 76 72 67 63 57 52 48 42 38 34 28 26 24 22 16 14 11 10 7 4 4 3 3 3 3 3 3 2 2 2 2 1 0 0 0 0 0

treat = SPC

87 86 83 81 75 72 67 60 57 50 45 36 32 27 25 20 17 14 13 10 6 6 3 3 3 3 2 2 1 1 1 1 1 1 1 0 0 0 0