



OPEN ACCESS

ORIGINAL ARTICLE

Geographical variations in the use of cancer treatments are associated with survival of lung cancer patients

Henrik Møller,^{1,2} Victoria H Coupland,³ Daniela Tataru,³ Michael D Peake,^{3,4} Anders Møller,⁵ Thomas Round,¹ David R Baldwin,⁶ Matthew E J Callister,⁷ Erik Jakobsen,⁸ Peter Vedsted,² Richard Sullivan,¹ James Spicer¹

► Additional material is published online only. To view please visit the journal online (<http://dx.doi.org/10.1136/thoraxjnl-2017-210710>).

¹School of Cancer and Pharmaceutical Sciences, King's College London, London, UK

²Department of Public Health, Research Centre for Cancer Diagnosis in Primary Care (CaP), Research Unit for General Practice, Aarhus University, Aarhus, Denmark

³National Cancer Registration and Analysis Service, Public Health England, London, UK

⁴Department of Respiratory Medicine, University of Leicester, Glenfield Hospital, Leicester, UK

⁵Department of Oncology, Herlev Hospital, University of Copenhagen, Herlev, Denmark

⁶Division of Respiratory Medicine, University of Nottingham, Nottingham City Hospital, Nottingham, UK

⁷Department of Respiratory Medicine, St James's University Hospital, Leeds, UK

⁸Department of Cardiothoracic Surgery, Odense University Hospital, Odense, Denmark

Correspondence to

Professor Henrik Møller, School of Cancer and Pharmaceutical Sciences, King's College London, London SE1 9RT, UK; henrik.moller@kcl.ac.uk

Received 30 June 2017

Revised 30 October 2017

Accepted 4 December 2017

Published Online First

6 March 2018

ABSTRACT

Introduction Lung cancer outcomes in England are inferior to comparable countries. Patient or disease characteristics, healthcare-seeking behaviour, diagnostic pathways, and oncology service provision may contribute. We aimed to quantify associations between geographic variations in treatment and survival of patients in England.

Methods We retrieved detailed cancer registration data to analyse the variation in survival of 176,225 lung cancer patients, diagnosed 2010–2014. We used Kaplan-Meier analysis and Cox proportional hazards regression to investigate survival in the two-year period following diagnosis.

Results Survival improved over the period studied. The use of active treatment varied between geographical areas, with inter-quintile ranges of 9%–17% for surgical resection, 4%–13% for radical radiotherapy, and 22%–35% for chemotherapy. At 2 years, there were 188 potentially avoidable deaths annually for surgical resection, and 373 for radical radiotherapy, if all treated proportions were the same as in the highest quintiles. At the 6 month time-point, 318 deaths per year could be postponed if chemotherapy use for all patients was as in the highest quintile. The results were robust to statistical adjustments for age, sex, socio-economic status, performance status and co-morbidity.

Conclusion The extent of use of different treatment modalities varies between geographical areas in England. These variations are not attributable to measurable patient and tumour characteristics, and more likely reflect differences in clinical management between local multi-disciplinary teams. The data suggest improvement over time, but there is potential for further survival gains if the use of active treatments in all areas could be increased towards the highest current regional rates.

INTRODUCTION

Lung cancer is a major burden of cancer morbidity and mortality in England.¹ Survival from lung cancer has been lower in England than in comparable countries,^{2–3} but there are indications of improving survival in recent years, possibly linked to more active treatment.^{3–7}

Early diagnosis of lung cancer is important and patients with localised cancers have a much greater chance of radical treatment and long-term survival.⁸

Key messages

What is the key question?

► Is the local variation in lung cancer treatment in England associated with patient survival?

What is the bottom line?

► Variations in the use of surgical resection, radical radiotherapy and chemotherapy are each associated with the survival of patients in the relevant stage groups.

Why read on?

► If these results are appreciated among clinicians in lung cancer multi-disciplinary teams, and treatment rates are increased towards the currently highest levels, more than 800 lung cancer patients each year could have a clinically relevant extension of their lives.

Recent papers have shown that the use of the fast-track 2 week referral route from the general practitioner to the diagnostic and oncology services is associated with favourable stage distribution and with higher survival of cancer patients.^{9–11} Conversely, long waiting times for treatment are associated with stage progression.^{12–13}

There remain important variations in lung cancer outcomes linked to region of residence, hospital of first attendance, socio-economic position, co-morbidity, tumour stage, histological type, and biological markers of prognosis, and there are separate variations in relation to local patterns of oncology treatment and care provision.^{14–17}

The aim of this study was to assess the magnitude of variation in the use of active treatments for lung cancer, and to identify potential opportunities to reduce variation and improve outcomes.

DATA AND METHODS

From the Cancer Analysis System in Public Health England, we extracted cancer registration data on patients with primary lung cancer, diagnosed between 2005 and 2014. If a person had more than one primary lung cancer, only the first record was considered.

Age at diagnosis, sex, topography (the anatomic location of the primary tumour), histology (the cell

Check for updates

To cite: Møller H, Coupland VH, Tataru D, *et al.* *Thorax* 2018;**73**:530–537.



type of the cancer), performance status and tumour stage were retrieved from the cancer registration records. Socio-economic status was taken as the quintile of the index of multiple deprivation 2010, based on the local area of residence at the time of cancer diagnosis.¹⁸ Co-morbidity was assessed by the Charlson co-morbidity index, derived from hospital discharge diagnosis from in-patient hospital admissions in the 2 year period from 27 months to 3 months before cancer diagnosis.^{19–21}

Unspecified codes for performance status, topography, histology and stage were retained as separate categories in the analysis. Performance status data were only available in the period 2010–2012. Persons with no in-patient hospital activity in the relevant period were assigned a co-morbidity score of zero.

At the level of the individual patient, the initial active cancer treatments (surgical resection; radical radiotherapy; chemotherapy) were derived from surgical procedure codes in Hospital Episode Statistics data, or from treatment tables in the Cancer Analysis System (radiotherapy; chemotherapy). The periods of treatment were from the month before cancer diagnosis to 6 months after for surgery and chemotherapy, and from 3 months before diagnosis to 12 months after for radiotherapy.

We used Primary Care Trust (PCT) organisation areas for the geographical analysis of treatment rates (the proportion of patients given particular treatments). There were 151 PCT organisations operating in England in the period 2006–2013 with an average population of 3 42 000 people.

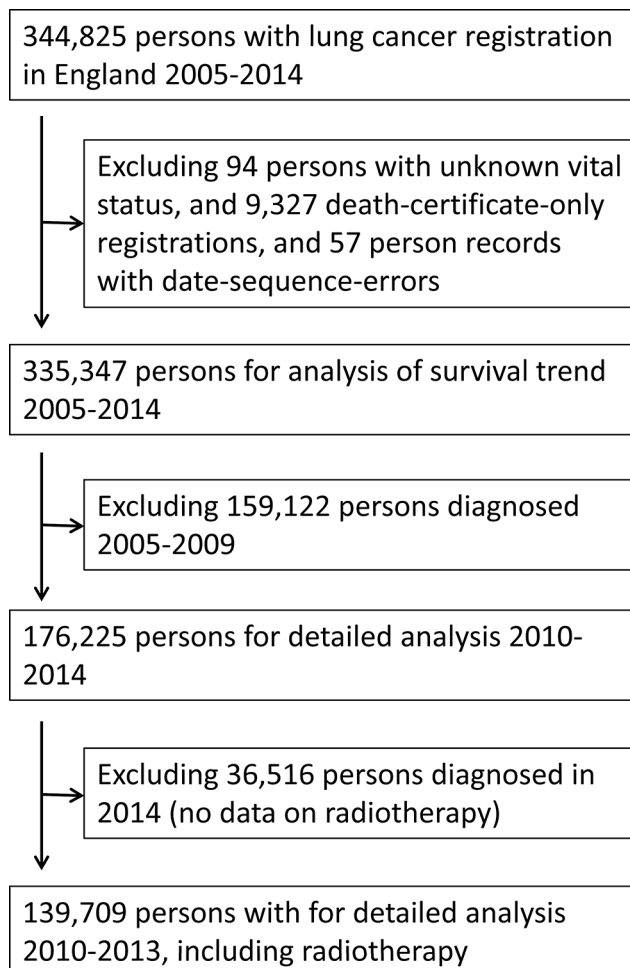


Figure 1 Inclusions and exclusions in lung cancer datasets 2005–2014, 2010–2014 and 2010–2013.

Table 1 Overview of person and tumour characteristics in lung cancer dataset, England 2010 – 2014 (n = 1 76 225), and the number of deaths during follow-up

Variable	Value	n	%	Deaths
Age	–49	4791	2.7	3396
	50–59	17 121	9.7	13 440
	60–69	47 166	26.8	37 868
	70–79	59 804	33.9	50 633
	80–89	41 089	23.3	37 545
	90+	6254	3.5	6043
Sex	Male	96 209	54.6	83 301
	Female	80 016	45.4	65 624
Socio-economic deprivation quintile	1 Least deprived	24 302	13.8	20 020
	2	31 470	17.9	26 453
	3	36 059	20.5	30 575
	4	40 208	22.8	34 170
	5 Most deprived	44 186	25.1	37 707
Performance status	0	14 366	13.8	10 692
	1	24 310	23.4	21 112
	2	14 888	14.3	14 226
	3	13 644	13.1	13 462
	4+	7822	7.5	7514
	NA	28 891	27.8	25 788
	NA (2013–2014)	72 304	–	56 131
Charlson comorbidity score	0	1 27 382	72.3	1 07 291
	1	24 062	13.7	20 292
	2	13 214	7.5	11 202
	3+	11 567	6.6	10 140
Topography	Trachea	166	0.1	121
	Main bronchus	8906	5.1	8299
	Upper lobe	75 936	43.1	61 267
	Middle lobe	6224	3.5	4848
	Lower lobe	40 123	22.8	32 419
	Overlapping or NA	44 870	25.5	41 971
	NA	–	–	–
Histology	Adenocarcinoma	49 880	28.3	38 141
	Squamous cell	34 420	19.5	27 437
	Small cell	19 407	11.0	17 878
	Carcinoid	3268	1.9	1466
	Large cell	1453	0.8	1161
	Non-small cell NOS	18 049	10.2	16 512
	Other specified	424	0.2	293
	Unspecified	49 324	28.0	46 037
Stage	I	19 339	11.0	8444
	II	10 696	6.1	6639
	III	29 491	16.7	24 742
	IV	76 843	43.6	73 558
	NA	39 856	22.6	35 542
	NA	–	–	–
Individual treatment: surgical resection	Y	23 172	13.1	8195
	N	1 53 053	86.9	1 40 730

Continued

Table 1 Continued

Variable	Value	n	%	Deaths
Individual treatment: radical radiotherapy	Y	11 311	8.1	8322
	N	128 398	91.9	1 13 840
	NA (2014)	36 516	–	26 763
Individual treatment: chemotherapy	Y	50 520	28.7	42 031
	N	125 705	71.3	1 06 894

The proportions of patients with different initial treatments were computed for each PCT area, and patients were thereafter grouped into quintiles based on PCT-level treatment rates.

Radiotherapy data were not available in 2014 and patients diagnosed in this year were assigned ‘not known’ codes for radiotherapy. Radical radiotherapy was assigned to patients in whom there was evidence from administration of 15 or more fractions of radiation.

We used Kaplan-Meier survival analysis to compute the cumulative risk of death from any cause at one, two and 5 year time-points after diagnosis for patients diagnosed in the period 2005–2014.

We did a cohort analysis to compute relative rates of death from any cause in the person-years experience from lung cancer diagnosis to death or censoring at 2 years of follow-up. This was implemented with Cox regression models. In models of chemotherapy, the HR was not constant over the 2 year follow-up period, and we therefore present hazard ratios computed over the initial 6 month period.

In the geographical analysis, the survival outcome was estimated for the entire patient population, regardless of individual treatments. The geographical treatment rate hereby serves as an ‘instrumental variable’²² and this has the potential to avoid the strong selection bias (‘confounding by indication’) that is inevitable if comparison is made directly between treated and untreated patients. Regression models were stratified by cancer stage, and in subsequent sensitivity analyses we did further adjustments for socio-economic status, performance status, co-morbidity, topography and histology. Sensitivity analyses of performance status were restricted to the period 2010–2012.

For selected models we used a shared frailty random effects model in order to account for the hierarchical nature of the data,

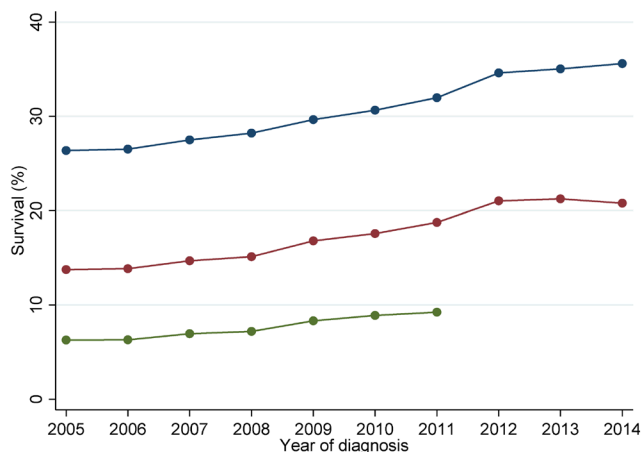


Figure 2 One-year (blue), 2 year (red) and 5 year (green) survival of lung cancer patients in England, diagnosed 2005–2014.

Table 2 Overview of geographically based treatment rates in lung cancer patients, England 2010–2014 (n=1 76 225)

Variable	Value	Median (%) in quintile	n	%	Deaths
Geographical surgery rate quintile	1 Lowest	9.3	35 253	20.0	31 335
	2	11.4	35 674	20.2	30 782
	3	13.1	34 927	19.8	29 711
	4	14.6	35 143	19.9	28 889
	5 Highest	17.2	35 228	20.0	28 208
Geographical radical radiotherapy rate quintile	1 Lowest	4.0	28 062	20.1	24 770
	2	6.1	27 879	20.0	24 610
	3	7.6	27 958	20.0	24 514
	4	9.3	28 342	20.3	24 530
	5 Highest	12.9	27 468	19.7	23 738
	NA (2014)		36 516	–	26 763
Geographical chemotherapy rate quintile	1 Lowest	21.6	35 289	20.0	30 199
	2	26.7	35 450	20.1	30 170
	3	29.2	35 120	19.9	29 242
	4	31.2	35 182	20.0	29 690
	5 Highest	34.5	35 184	20.0	29 624

with groups of patients belonging to the same PCT area. The results from the shared frailty models were in all cases virtually identical to the single-level models and results are, therefore, presented for the single-level models only.

To give an appreciation of the absolute magnitude of effects, we did a Kaplan-Meier analysis of patients in the relevant stage categories and compared survival of these patients in the quintiles of the geographical treatment rates. From the cumulative survival to the 2 year time point (surgery and radical radiotherapy) or the 6 month time-point (chemotherapy), we computed the approximate number of ‘avoidable deaths’, that is the number of deaths that could potentially be postponed beyond the 2 year or the 6 month time-point, if all patients had the same survival as those in the highest quintile of treatment rate.

In order to visualise the shapes of the relationships between the geographical treatment rates and the survival of patients in the relevant stage groups, we extended the five categories (quintiles) to 15 categories, and fitted quadratic functions to the resulting hazard ratios.

RESULTS

We retrieved data on 344 825 persons who were resident in England with a first record of lung cancer (ICD10 C33 or C34) in the period 2005–2014 (figure 1). Data cleaning eliminated 9327 death-certificate-only registrations (2.7%) and small numbers of records with unknown vital status or date-sequence errors (for example when the recorded date of diagnosis was after the date of death). More detailed analyses were restricted to the period 2010–2014 (176 225 persons). At the time when these data were retrieved and prepared for analysis, radiotherapy data were not available for the year 2014, and persons diagnosed in 2014 (36 516) were assigned a missing value for radiotherapy. Similarly, performance status was only available for 2010–2012, and patients diagnosed in 2013–2014 were assigned a missing value for performance status.

Figure 2 shows the trend in 1 year, 2 year and 5 year survival of lung cancer patients in England. The 1 year survival estimate

Table 3 Analysis of survival of lung cancer patients in relation to the geographically based propensity to use surgical resection

A) Surgical resection					
Geographical quintile of surgical resection		Adjusted for age and sex		Adjusted for age and sex and restricted to stage I and II patients	
		HR	95 % CI	HR	95 % CI
1	Lowest	1.00		1.00	
2		0.96	0.94 to 0.97	0.91	0.85 to 0.96
3		0.92	0.91 to 0.94	0.89	0.84 to 0.94
4		0.90	0.88 to 0.91	0.82	0.77 to 0.86
5	Highest	0.84	0.83 to 0.86	0.80	0.75 to 0.84
χ^2 (one df)		456.7		74.2	
P for trend		<0.001		<0.001	
B) Radical radiotherapy					
Geographical quintile of radiotherapy		Adjusted for age and sex		Adjusted for age and sex and restricted to Stage III and Stage NA patients	
		HR	95% CI	HR	95% CI
1	Lowest	1.00		1.00	
2		0.98	0.97 to 1.00	0.97	0.95 to 1.00
3		0.97	0.95 to 0.99	0.94	0.91 to 0.97
4		0.93	0.91 to 0.95	0.92	0.89 to 0.94
5	Highest	0.94	0.92 to 0.95	0.88	0.85 to 0.90
χ^2 (one df)		80.7		97.4	
P for trend		<0.001		<0.001	
C) Chemotherapy					
Geographical quintile of chemotherapy		Adjusted for age and sex		Adjusted for Age and sex and restricted to Stage IV patients	
		HR	95% CI	HR	95% CI
1	Lowest	1.00		1.00	
2		0.96	0.94 to 0.98	0.97	0.94 to 0.99
3		0.90	0.89 to 0.92	0.94	0.91 to 0.96
4		0.90	0.88 to 0.92	0.92	0.89 to 0.94
5	Highest	0.90	0.88 to 0.91	0.90	0.87 to 0.92
χ^2 (one df)		138.5		73.8	
P for trend		<0.001		<0.001	

increased by one percentage point per year, from 26% in 2005 to 36% in 2014.

Table 1 gives an overview of the person and tumour characteristics of the 176 225 persons diagnosed in 2010–2014. In these recent data, tumour stage was recorded in 77% of the cases. The table also shows the tabulation of the individual cancer treatments administered at the time of diagnosis: surgical resection (13.1%), radical radiotherapy (8.1% of cases diagnosed in 2010–2013), and chemotherapy (28.7%). Of note, 48% of patients receiving radical radiotherapy also had chemotherapy, and 23% of the surgically resected patients also had chemotherapy.

Table 2 shows the geographical variation in the use of treatment modalities, represented by the quintiles of the distributions. Surgical resection varied from 9.3% of patients in the lowest quintile to 17.2% in the highest. Radical radiotherapy varied similarly between 4.0% and 12.9%, and chemotherapy varied between 21.6% and 34.5%.

Table 3A shows the analysis of all-cause mortality in relation to the geographical quintile of the PCT-level distribution of the use of surgical resection. The basic model was adjusted for age and sex (these adjustments did not change the estimates importantly, compared with the crude model). The HR was 0.84

(0.83–0.86) in the highest quintile compared with the lowest, and the statistical trend over the five quintiles was highly statistically significant. Exclusion of small-cell cancers from the analysis did not change this result. An analysis stratified by stage showed that the association between surgical resection and survival was largely restricted to patients with Stage I or II lung cancer (HR 0.80 (0.75–0.84) in highest vs lowest quintile). Further analyses showed that the association in Stage I and II patients was not confounded by socio-economic status, performance status, co-morbidity or the anatomic site of the cancer, but there was a small degree of confounding by tumour histology (fully adjusted model, HR 0.84 (0.80–0.89) between the extreme quintiles). The confounding by histology was due to a higher completeness of the recording of specific histology information in geographical areas with high surgical resection rates.

Figure 3A shows the Kaplan-Meier survival functions for Stage I and II patients in the five quintiles of resection rate. The variation in survival at the 2 year time-point was 8.5% points difference between the extreme quintiles. In absolute terms, the variability between the five quintiles corresponds to about 188 (95%CI 177 to 200) avoidable deaths per year at the 2 year survival time-point. This is the number of potentially avoidable

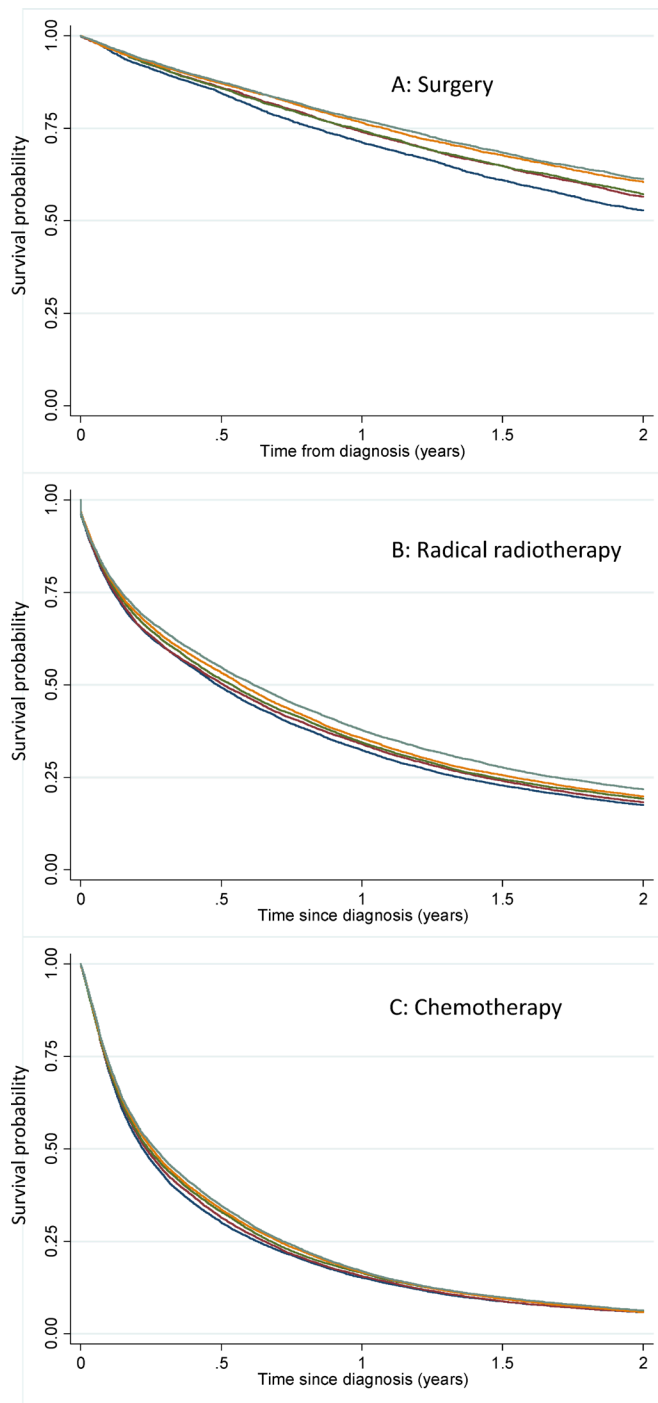


Figure 3 Kaplan-Meier survival functions for lung cancer patients, categorised by the quintiles of treatment rates in their area of residence. A: Survival of Stage I-II patients in relation to quintile of surgical resection rate. B: Survival of Stage III patients and patients with no record of stage, in relation to quintile of radical radiotherapy rate. C: Survival of Stage IV patients in relation to quintile of chemotherapy rate.

deaths if all lung cancer patients in Stage I and II had the same survival as those in the highest quintile of surgical resection.

Table 3B shows the analysis of the geographical variation in radical radiotherapy. As for surgical resection, there was a statistically significant trend with higher survival in areas with high use of radical radiotherapy (HR 0.94 (0.92–0.95)) in the highest vs. the lowest quintile. Stratification by stage showed that the association was largely restricted to patients with Stage

III cancer and patients with no record of stage, and these two groups were therefore combined. The estimate of 0.88 (0.85–0.90) for the highest vs. the lowest quintile was not confounded by socio-economic status, performance status, co-morbidity or tumour histology, but adjustment for the anatomic location of the tumour changed the estimate slightly to 0.92 (0.89–0.95). The confounding was due to a higher proportion of cases with unspecified anatomic site in geographical areas with low use of radical radiotherapy.

Figure 3B shows the Kaplan-Meier survival functions for patients with Stage III and patients with no record of stage in relation to the quintile of radical radiotherapy use. At the 2 year time-point, the difference between the extreme quintiles was 4.3 percentage points and the number of deaths potentially avoidable at the 2 year time-point was 373 (355–391) per year.

Table 3C shows the association between use of chemotherapy and patient survival in the 6 months following diagnosis. The HR was 0.90 (0.88–0.91) in the highest versus the lowest quintile of chemotherapy use. The survival gradient was largely due to an association with survival of stage IV patients (HR 0.90 (0.87–0.92)). This was not confounded by socio-economic group, performance status, co-morbidity or anatomic site of the primary cancer, but there was a degree of confounding (adjusted HR 0.94 (0.91–0.97)) due to less complete recording of histology in geographical areas with low use of chemotherapy.

Figure 3C shows the Kaplan-Meier survival function for Stage IV patients in the quintiles of chemotherapy use. The functions were separated by 4.6 percentage points at the 6 month time point, but converged towards the 2 year time-point. The number of potentially avoidable deaths at 6 months was 318 (302–333).

DISCUSSION

Principal findings

We have shown a striking variation in patterns and rates of treatment for lung cancer across geographical areas in England. Surgical resection rates ranged from 9.3% for areas in the lowest quintile to 17.2% in the highest, with radical radiotherapy varying similarly from 4.0% to 12.9%. These differences are associated with outcomes including overall survival at 2 years. The proportion of patients receiving chemotherapy varied between 21.6% and 34.5%, and this was associated with survival at 6 months. Chemotherapy treatment rates did not affect 2 year survival, probably reflecting the poor longer-term prognosis for advanced lung cancer, irrespective of treatment. The data suggest important improvement in lung cancer survival over time, but there is potential for further survival gains if the use of active treatments in all areas could be increased towards the highest current regional rates.

Interpretation and caveats

It is a limitation that 57% of records in the full 2010–2014 dataset had a missing value for performance status (PS). The availability of PS information in the national cancer register changed in 2013 due to changes to the national lung cancer audit, which previously received this data from hospitals. However, a large proportion of the cohort ($n=75\,030$) had non-missing PS data, and statistical adjustment for PS in the 2010–2012 sub-cohort did not change the estimated hazard ratios materially.

The incidence of most solid tumours increases with age, and lung cancer is, in general, a disease of the elderly. Median age at presentation in the UK is in the early 70s¹⁷ and is likely to increase in the future. This has implications for clinical management decisions relating to radical treatment, where

operability and co-morbidity have a significant impact. Importantly, the heterogeneity of outcomes reported here remain significant after standardisation by age and other covariates. Although 72% of this national cohort is recorded as having a Charlson co-morbidity score of 0, this is based on in-patient activity data only, and therefore an under-estimate of the true extent of co-morbidity in the lung cancer population.

Socio-economic deprivation is associated with low cancer survival.^{23–25} In the case of lung cancer this effect is likely to be exaggerated by the very marked inverse association between socio-economic status and smoking prevalence.²⁶ This is because lung cancer is one of many smoking-related diseases that may co-exist in the same patient, and these diseases may not have been recognised and recorded. The impact of socio-economic deprivation could also support the hypothesis that healthcare-seeking behaviours may contribute to the poor outcomes overall in England. However, even if systematic behavioural differences do exist between the population in England and in other European countries, the geographical variation in treatment rates reported here highlights an unsatisfactory heterogeneity in delivery of active treatment across the country, irrespective of demographics and co-morbidities.

The analysis of radiotherapy data was based on the new Radiotherapy Data Set (RTDS),²⁷ which is in a relatively early stage of development and in need of data harmonisation and quality assurance. Although we attempted to identify patients receiving stereotactic ablative radiotherapy (SABR)²⁸ by focusing on patients with multiple fractions of large doses of radiation, we did not succeed in distinguishing these patients from those treated with palliative intent. The numbers of patients being treated with SABR in England between 2010 and 2013 was relatively small, so this is unlikely to have materially influenced the results.

Regarding the associations between therapies, the main co-variation in these data was a gradient from little treatment towards more treatment (of each kind of treatment and of any kind of treatment). Therefore, the general message is about more active treatment, using the specific treatment modality that is appropriate in relation to the stage of the cancer in each patient. A secondary, less strong, gradient was seen between surgery and radical radiotherapy. However, as the effects on survival from surgery and from radical radiotherapy were manifest in separate strata of stage (surgery, stage I and II; radical radiotherapy, stage III), we did not pursue the analysis of surgery and radiotherapy as alternative strategies, based on these data. The next few years of data may perhaps be useful for a comparative study of surgery and radical radiotherapy (including SABR).

The present analysis is population-based, and includes all lung cancer patients nationally, regardless of hospital attendance or specialist oncology care. The survival outcomes we report are therefore expected to be inferior to patient groups seen in a lung cancer clinic setting²⁹ or analysis restricted to those with a confirmed histological diagnosis.³⁰ The advantage of the population-based setting is that it includes the entire lung cancer population, and avoids the selection bias that would arise from selective referral of patients into the lung cancer specialist service. As a consequence of the inclusive population-base of the study, data including stage and histology were not recorded for some patients, and we did not attempt to impute this information. The analysis showed that the completeness of recording of these variables seemed to be associated with other aspects of the local clinical treatment culture. We explored a wide range of stratifications and adjustments, and all the important findings are reported in the Results section. There was a small degree of

sensitivity in some of the Cox regressions. Rather than reflecting on this as the modification of a causal effect, we think it is more likely that the causation is in the opposite direction, and that a particular treatment culture (like high use of surgical resection) is associated with the use of specific evaluation tools (like PET scanning and ultrasound guided tissue sampling), and that it hereby influences the recording of topography and histology. The association in these data was in the direction of more complete recording of topography and histology in clinical cultures with higher rates of active treatment.

The 'instrumental variable' analysis reported here looks at survival in combined treated and untreated cancer patients for each therapeutic modality. This avoids a direct comparison between treated and untreated patients, which would be subject to strong selection bias.^{31 32} The instrumental variable analysis approach can provide measures of effectiveness that are not confounded by the characteristics that would otherwise be strong confounders at the individual level (age, sex, socio-economic status, co-morbidity, performance status). Evidence of the validity of the results can be inferred from the absence of association between the potential confounder and the treatment quintiles, and from the lack of sensitivity of the estimated hazard ratios to statistical adjustment for the potential confounder.

The choice of the size of the geographical areas for derivation of the instrumental variables is somewhat arbitrary. If we chose too large an area (like Government Office Region) we get a mixture of clinical attitudes within each area, and we lose much of the potential variation between areas. If too small areas are chosen (like the full postcode) then each patient would likely have this area to themselves, and the design collapses to an individual-level analysis with its well known biases. The ideal area selection is somewhere in-between, but we are not aware of any current formal methodology to decide the best area size. Intuitively, it would seem preferable if the number of areas corresponds approximately to the number of clinical decision-making teams, and the PCT level could then be considered about right.

We used a shared frailty random effects model in order to account for the hierarchical nature of the data, with groups of patients belonging to the same PCT area. The results were in all cases virtually identical to the single-level models and results were, therefore, presented from the single-level Cox models.

We attempted to describe, in absolute terms, the number of deaths that correspond to the observed differences between the Kaplan-Meier survival functions at a selected time-point. The assumption is that the observed patients in the low-treatment culture could potentially get the same survival as the patients observed in the high-treatment culture. The support for this conjecture comes from the absence of confounding in the HR estimates in the Cox regression analyses.

In the observational setting, an analysis restricted to treated patients is likely to show that the survival of treated patients is lower when treatment rate is high. This is because a higher treatment rate is possible only by giving active treatment to a less favourable case-mix. Our analysis has focused on the overall clinical effectiveness of different treatment strategies and patterns.

Changes over time and comparison with another population

It is a limitation of this work that we have studied short-term survival, and there is no consideration of patient experience or quality of life. This short-term emphasis is appropriate for lung cancer patients, who have a poor prognosis compared with most other cancers, irrespective of treatment modality. Despite this, the increase in 1 year survival of one percentage point per

calendar year is evidence of remarkable progress (figure 2). It has been shown that this improvement in survival is strongest in the early stage group.³³ The geographical variability in surgical resection has increased most where it was higher already.³⁴ It would be preferable to see over time a decrease in the geographical variation, and these trends should continue to be monitored for all the treatment modalities. Some initiatives have been taken in an effort to address this, with a recent significant increase nationally in both the number of surgical resections for lung cancer, and in the number of specialist thoracic surgeons.^{35 36}

Results from other national registries show that the highest treatment quintiles in England are in line with international standards. The surgical resection rate in 2014 was 13.1% in England and 16.3% in Denmark.³⁷ Overall curative intended treatment rates were 19.5% and 30.6%, respectively. The differences in treatment intensity are associated with differences in survival between the two countries. One-year survival in 2014 was 36% in England and 46% in Denmark. Similarly, 2 year survival was 20% and 29%, respectively, and 5 year survival was 9% and 13%, respectively.

Clinical and policy implications

We have observed superior survival associated with higher use of active treatment in lung cancer. Therefore there is certainly room for enhanced delivery of care in some geographical areas in England. However, there must be a point beyond which further increase in treatment rates yields no further survival improvement, or may even lead to inferior outcomes. Our analyses indicate linear relationships between treatment rates and survival that extend to the highest range of treatment rates for each modality (figure 4). We conclude that even the highest treatment rates that we observe are still below the levels required for optimal survival outcomes.

Regional variation in lung cancer treatment and outcomes in the UK has been examined in several previous studies,^{17 34 38} and it has been suggested that major outcome improvements at a population level would be achievable if all services were equivalent to the best performing clinical teams in the UK.³⁹ Our data validates this suggestion and quantifies the absolute numbers of deaths potentially preventable by more uniform care provision. The mechanisms required to achieve this range from improving access to more specialised lung cancer multi-disciplinary teams,⁴ to increasing the numbers of specialist thoracic surgeons.³⁸

The National Health Service in England has developed guidance for regional commissioning bodies based on the best lung cancer services provided at major centres. This guidance suggests local provision where possible, with support from larger centres if necessary. Implementation of these recommendations remains a demanding challenge because multiple institutions and clinical services must be coordinated in each geographical region, but our data demonstrates that the potential benefits are significant and achievable. We have established that a clinical culture that is active in its use of available therapies improves outcomes for the lung cancer patients in its community.

Contributors HM, VHC and DT designed the study. VHC, DT and HM assembled the data set. HM analysed the data. All authors contributed to the interpretation of the results. HM and JS organised the drafting of the manuscript. All authors contributed to the writing of the manuscript and approved the final version.

Funding The study was supported by the National Cancer Registration and Analysis Service, Public Health England, and by the National Institute for Health Research (NIHR) Biomedical Research Centre at Guy's and St Thomas' NHS Foundation Trust.

Disclaimer The views expressed are those of the authors and not necessarily those of Public Health England, NIHR, NHS, or the Department of Health.

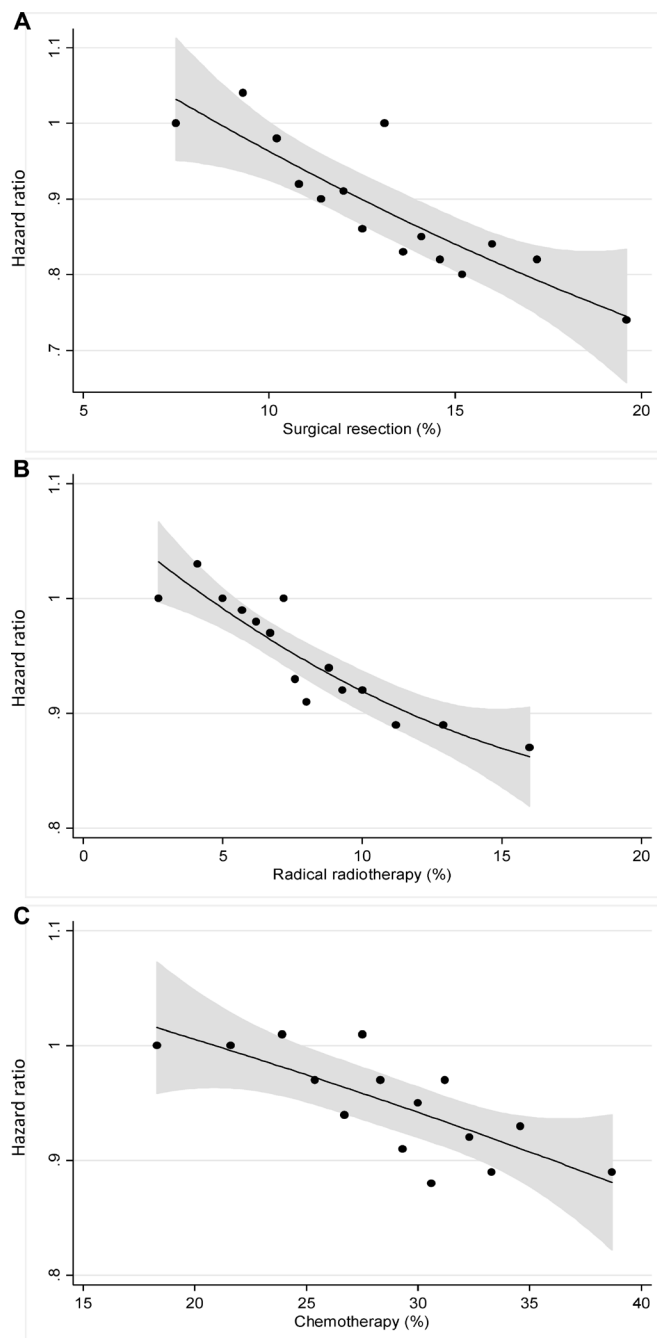


Figure 4 Plots of the HR for death in 15 equal-sized groups of patients from geographical areas, from the lowest to the highest geographical treatment rates. A: Survival of Stage I-II patients in relation to surgical resection rate. B: Survival of Stage III patients and patients with no record of stage, in relation to radical radiotherapy rate. C: Survival of Stage IV patients in relation to chemotherapy rate. Quadratic functions were fit to the 15 data points and are presented with 95% CIs.

Competing interests TR has a personal grant from the National Institute for Health Research during the period of this work. DRB has received personal fees from Astra Zeneca, outside the submitted work. Other authors have no competing interest to declare.

Patient consent Detail has been removed from this case description/these case descriptions to ensure anonymity. The editors and reviewers have seen the detailed information available and are satisfied that the information backs up the case the authors are making.

Ethics approval The study was covered by Section 251 of the National Health

Service Act 2006 which enables the collection and analysis of cancer registration data in England. Therefore, separate ethical approval was not required for this study.

Provenance and peer review Not commissioned; externally peer reviewed.

Data sharing statement This work uses data provided by patients and collected by the NHS as part of their care and support.

Open Access This is an Open Access article distributed in accordance with the Creative Commons Attribution Non Commercial (CC BY-NC 4.0) license, which permits others to distribute, remix, adapt, build upon this work non-commercially, and license their derivative works on different terms, provided the original work is properly cited and the use is non-commercial. See: <http://creativecommons.org/licenses/by-nc/4.0/>

© Article author(s) (or their employer(s) unless otherwise stated in the text of the article) 2018. All rights reserved. No commercial use is permitted unless otherwise expressly granted.

REFERENCES

- 1 Cancer Research UK. Lung cancer statistics. <http://www.cancerresearchuk.org/health-professional/lung-cancer-statistics> 2016.
- 2 Holmberg L, Sandin F, Bray F, *et al.* National comparisons of lung cancer survival in England, Norway and Sweden 2001-2004: differences occur early in follow-up. *Thorax* 2010;65:436–41.
- 3 Walters S, Benitez-Majano S, Muller P, *et al.* Is England closing the international gap in cancer survival? *Br J Cancer* 2015;113:848–60.
- 4 Sethi T, Lim E, Peake M, *et al.* Improving care for patients with lung cancer in the UK. *Thorax* 2013;68:1181–5.
- 5 Riaz SP, Linklater KM, Page R, *et al.* Recent trends in resection rates among non-small cell lung cancer patients in England. *Thorax* 2012;67:811–4.
- 6 Khakwani A, Rich AL, Tata LJ, *et al.* Small-cell lung cancer in England: trends in survival and chemotherapy using the National Lung Cancer Audit. *PLoS One* 2014;9:e89426.
- 7 Khakwani A, Rich AL, Powell HA, *et al.* Lung cancer survival in England: trends in non-small-cell lung cancer survival over the duration of the National Lung Cancer Audit. *Br J Cancer* 2013;109:2058–65.
- 8 Lichtenborg M, Riaz SP, Lim E, *et al.* Survival of patients with small cell lung cancer undergoing lung resection in England, 1998-2009. *Thorax* 2014;69:269–73.
- 9 Møller H, Gildea C, Meechan D, *et al.* Use of the English urgent referral pathway for suspected cancer and mortality in patients with cancer: cohort study. *BMJ* 2015;351:h5102.
- 10 O'Dowd EL, McKeever TM, Baldwin DR, *et al.* What characteristics of primary care and patients are associated with early death in patients with lung cancer in the UK? *Thorax* 2015;70:161–8.
- 11 Maclean R, Jeffreys M, Ives A, *et al.* Primary care characteristics and stage of cancer at diagnosis using data from the national cancer registration service, quality outcomes framework and general practice information. *BMC Cancer* 2015;15:500.
- 12 Chen Z, King W, Pearcey R, *et al.* The relationship between waiting time for radiotherapy and clinical outcomes: a systematic review of the literature. *Radiation Oncol* 2008;87:3–16.
- 13 Wang J, Mahasittiwat P, Wong KK, *et al.* Natural growth and disease progression of non-small cell lung cancer evaluated with 18F-fluorodeoxyglucose PET/CT. *Lung Cancer* 2012;78:51–6.
- 14 Lichtenborg M, Riaz SP, Coupland VH, *et al.* High procedure volume is strongly associated with improved survival after lung cancer surgery. *J Clin Oncol* 2013;31:3141–6.
- 15 Jack RH, Davies EA, Møller H. Lung cancer incidence and survival in different ethnic groups in South East England. *Br J Cancer* 2011;105:1049–53.
- 16 Khakwani A, Rich AL, Powell HA, *et al.* The impact of the 'hub and spoke' model of care for lung cancer and equitable access to surgery. *Thorax* 2015;70:146–51.
- 17 Royal College of Physicians. 2015. NLCA annual report. London: National Lung Cancer Audit. <https://www.rcplondon.ac.uk/projects/outputs/nlca-annual-report-2016>.
- 18 *English indices of deprivation*. England: Department for Communities and Local Government, 2010.
- 19 Charlson ME, Pompei P, Ales KL, *et al.* A new method of classifying prognostic comorbidity in longitudinal studies: development and validation. *J Chronic Dis* 1987;40:373–83.
- 20 Sarfati D, Hill S, Purdie G, *et al.* How well does routine hospitalisation data capture information on comorbidity in New Zealand? *N Z Med J* 2010;123:50–61.
- 21 Crooks CJ, West J, Card TR. A comparison of the recording of comorbidity in primary and secondary care by using the Charlson Index to predict short-term and long-term survival in a routine linked data cohort. *BMJ Open* 2015;5:e007974.
- 22 Greenland S. An introduction to instrumental variables for epidemiologists. *Int J Epidemiol* 2000;29:722–9.
- 23 National cancer registration and analysis service. *Cancer by deprivation in England 1996 – 2011*. London: Public Health England, 2010.
- 24 Berglund A, Lambe M, Lichtenborg M, *et al.* Social differences in lung cancer management and survival in South East England: a cohort study. *BMJ Open* 2012;2:e001048.
- 25 Coleman MP, Rachet B, Woods LM, *et al.* Trends and socioeconomic inequalities in cancer survival in England and Wales up to 2001. *Br J Cancer* 2004;90:1367–73.
- 26 Parkin DM. 2. Tobacco-attributable cancer burden in the UK in 2010. *Br J Cancer* 2011;105:S6–13.
- 27 Radiotherapy Data Set (RTDS). http://www.datadictionary.nhs.uk/data_dictionary/messages/clinical_data_sets/data_sets/radiotherapy_data_set_fr.asp?shownav=1
- 28 Sun B, Brooks ED, Komaki RU, *et al.* 7-year follow-up after stereotactic ablative radiotherapy for patients with stage I non-small cell lung cancer: results of a phase 2 clinical trial. *Cancer* 2017;123:3031–9.
- 29 Rich AL, Tata LJ, Stanley RA, *et al.* Lung cancer in England: information from the national lung cancer audit (LUCADA). *Lung Cancer* 2011;72:16–22.
- 30 Ni X, Han JQ, Ye X, *et al.* Percutaneous CT-guided microwave ablation as maintenance after first-line treatment for patients with advanced NSCLC. *Onco Targets Ther* 2015;8:3227–35.
- 31 Feinstein AR, Sosin DM, Wells CK. The Will Rogers phenomenon. Stage migration and new diagnostic techniques as a source of misleading statistics for survival in cancer. *N Engl J Med* 1985;312:1604–8.
- 32 Swanson SA, Robins JM, Miller M, *et al.* Selecting on treatment: a pervasive form of bias in instrumental variable analyses. *Am J Epidemiol* 2015;181:191–7.
- 33 McPhail S, Johnson S, Greenberg D, *et al.* Stage at diagnosis and early mortality from cancer in England. *Br J Cancer* 2015;112:S108–115.
- 34 Riaz SP, Lichtenborg M, Jack RH, *et al.* Variation in surgical resection for lung cancer in relation to survival: population-based study in England 2004-2006. *Eur J Cancer* 2012;48:54–60.
- 35 Lung cancer clinical outcomes publication 2016 (for the 2014 audit period). http://scts.org/wp-content/uploads/2016/12/LCCOP-2016-report_WEB.pdf
- 36 Peake MD, Black EA. Increasing the surgical resection rate for lung cancer in the UK: the debate. *Lung Cancer Manag* 2013;2:205–11.
- 37 Jakobsen E, Rasmussen TR, Green A. Mortality and survival of lung cancer in Denmark: results from the Danish lung cancer group 2000-2012. *Acta Oncol* 2016;55:2–9.
- 38 Lau KK, Rathinam S, Waller DA, *et al.* The effects of increased provision of thoracic surgical specialists on the variation in lung cancer resection rate in England. *J Thorac Oncol* 2013;8:68–72.
- 39 UK Lung Cancer Coalition. *A ten year strategy to improve lung cancer outcomes*. UK: The United Kingdom Lung Cancer Coalition (UKLCC). <http://www.uklcc.org.uk/files/UKLCC-%2025%20by%2025%20FINAL.pdf>

THORAX

Treatment variations may be cutting short lives of hundreds of lung cancer patients in England every year

Obvious disease or patient factors not driving geographical differences, say researchers

Differences in the active treatment of lung cancer across England may be cutting short the lives of hundreds of patients with the disease every year, concludes research published online in the journal *Thorax*.

Disease and patient factors don't seem to be driving these variations, say the researchers, who calculate that if treatment rates rose to optimal levels, 800 patients could "have a clinically relevant extension of their lives each year."

Lung cancer survival in England is worse than in other comparable countries, with various factors, such as speed of diagnosis and access to cancer services, thought to influence the figures.

The researchers wanted to know if geographical variations in treatment might also have a role in lung cancer survival rates across the country.

So they retrieved national cancer registry information on the survival of people who had been diagnosed with lung cancer between 2005 and 2014.

The 1 year survival of lung cancer patients in England improved by one percentage point each year between 2005 and 2014, rising from 26 percent in 2005 to 36 percent in 2014, the figures showed.

The researchers then looked in detail at active treatment (surgery, radiotherapy, and chemotherapy) and its potential association with survival of 176,225 people who had been diagnosed with the disease between 2010 and 2014.

The detailed analysis of the 2010-14 period showed considerable variations in use of active treatment, which was in turn associated with survival rates.

Fewer than one in 10 patients (9.3%) had surgery in the bottom fifth (quintile) of active treatment areas compared with one in six (17%) in the top fifth. Similarly, radical radiotherapy varied from 4 percent to 13 percent, and chemotherapy from 21.5 percent to 34.5 percent.

The more active the treatment, the longer survival tended to be. And the researchers calculated that this variation added up to 188 potentially avoidable annual deaths in the first two years after diagnosis for those not actively treated with surgery plus 373 deaths for those not actively treated with radiotherapy.

Similarly, 318 deaths could have been delayed at the six month time point if patients had been as actively treated with chemotherapy as they were in the top five performing areas.

Chemotherapy treatment rates didn't affect two year survival rates, possibly because more advanced lung cancer tends to have a poor outlook irrespective of what treatment is given, say the researchers.

But the annual toll of avoidable deaths could be 800 if active treatment reached the rates of the top five performing areas, they say.

Their calculations held true after taking account of underlying conditions; age; sex; and tumour stage.

The researchers go on to say that linear associations between treatment rates and length of survival extend to the highest range of treatment rates for each option, and they conclude that "even the highest treatment rates that we observed are still below the levels required for optimal survival outcomes."

Notes for editors

Research: Geographical variations in the use of cancer treatments are associated with survival of lung cancer patients doi 10.1136/thoraxjnl-2017-210710

Journal: *Thorax*