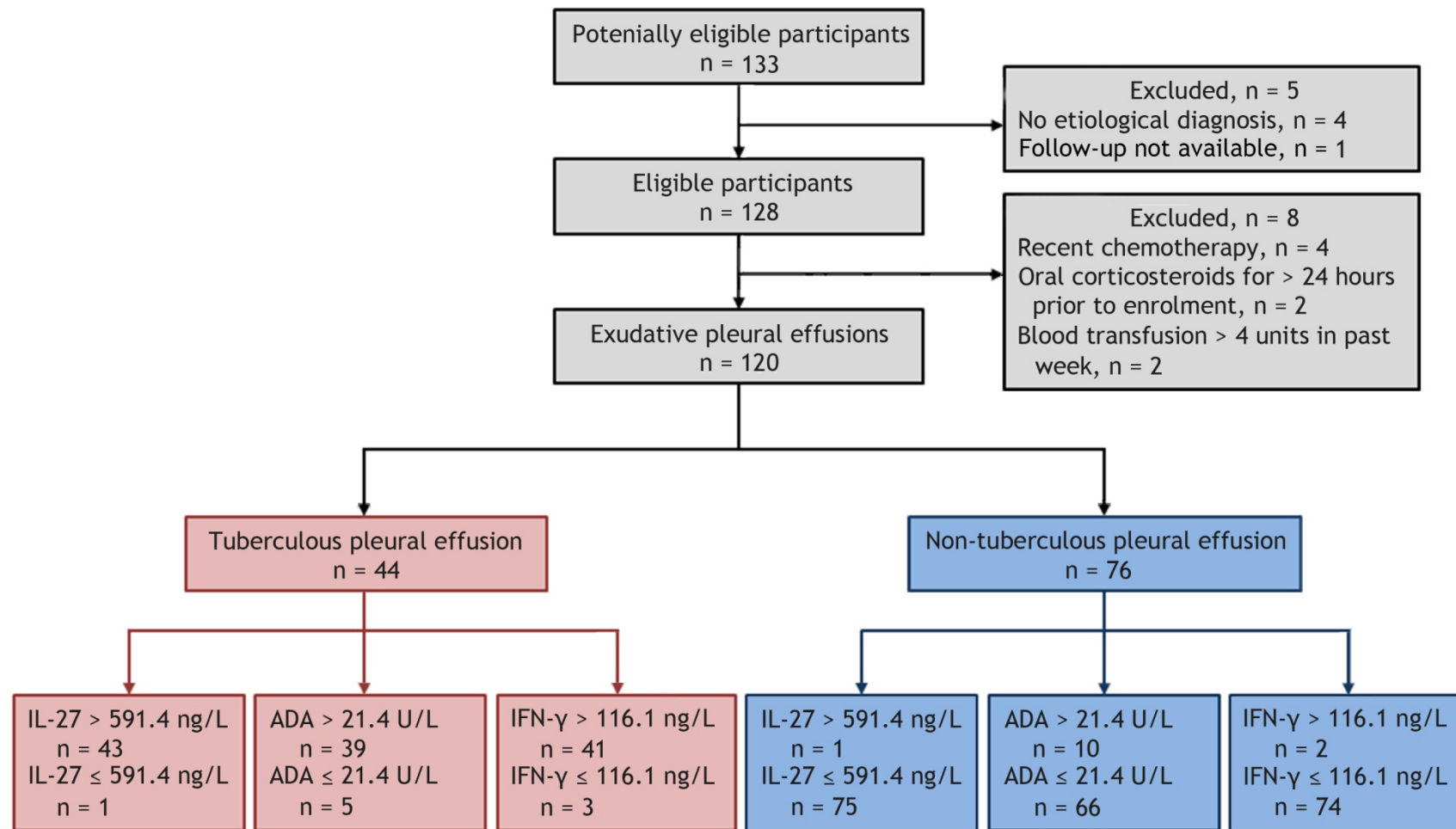
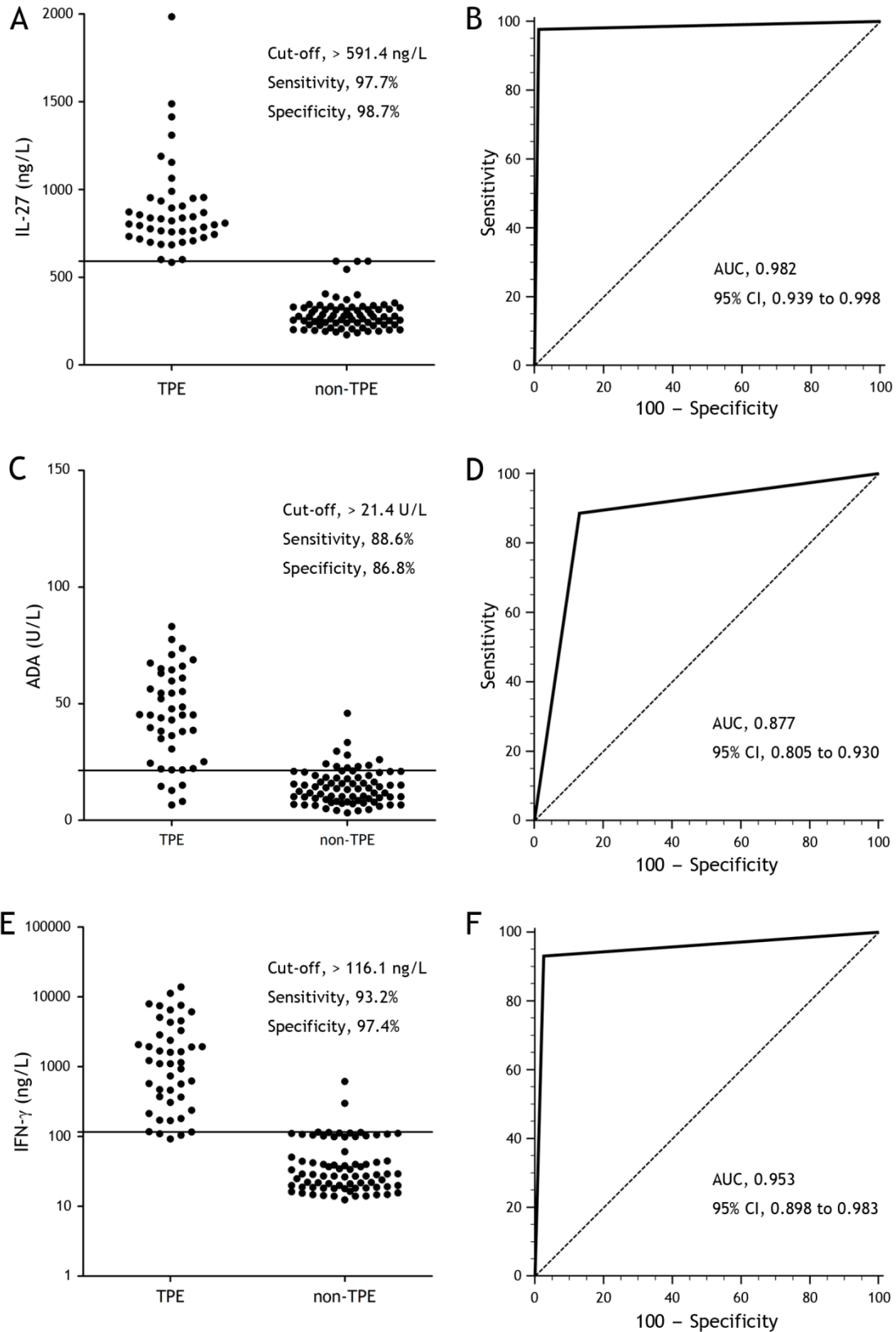


**Supplement Figure 1: Flow Diagram of study Population in Beijing Cohort.** ADA = adenosine deaminase, IL-27 = interleukin 27, IFN-γ = interferon-γ.

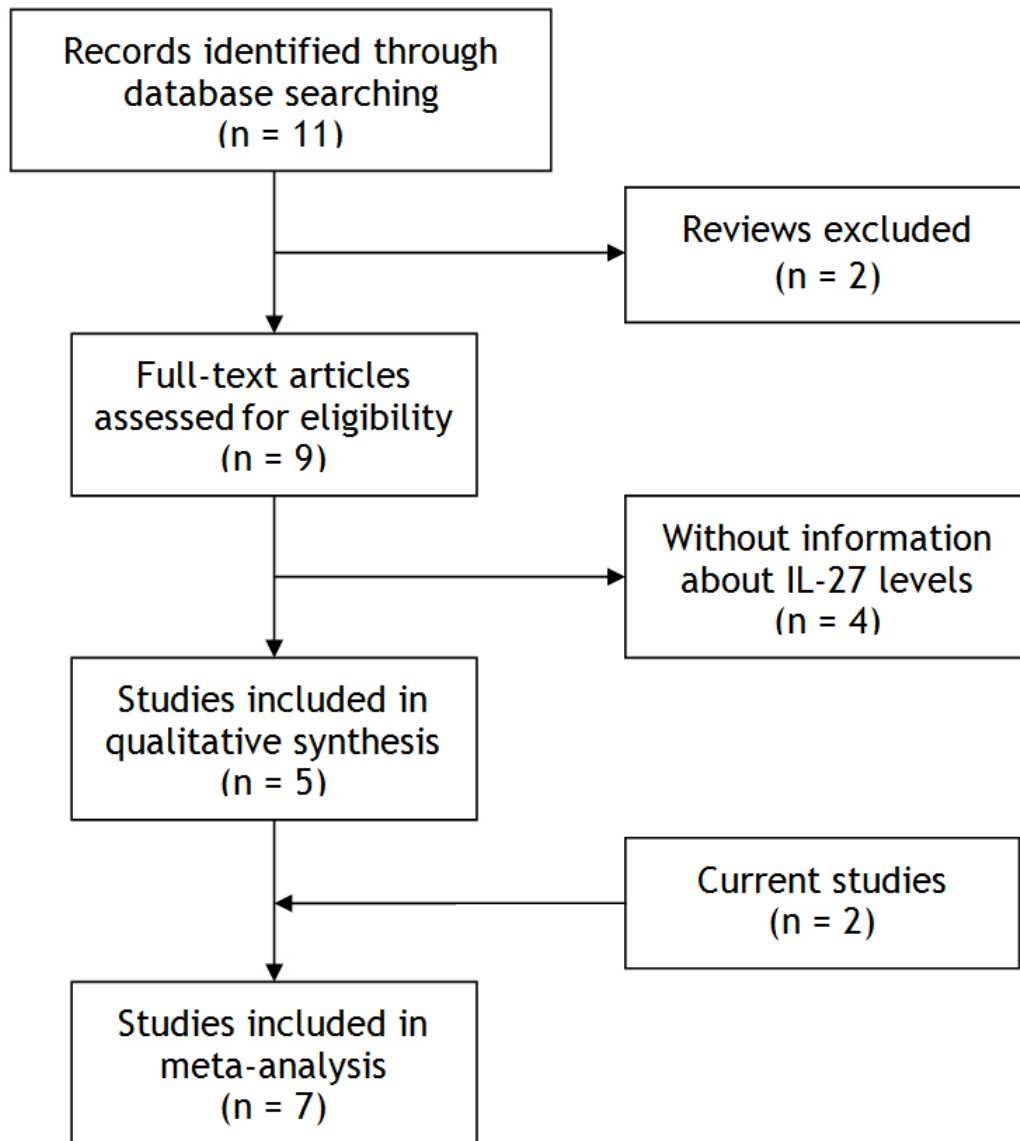


**Supplement Figure 2: Flow Diagram of Study Population in Wuhan Cohort.** ADA = adenosine deaminase, IL-27 = interleukin 27, IFN-γ = interferon-γ, TPE = tuberculous pleural effusion.

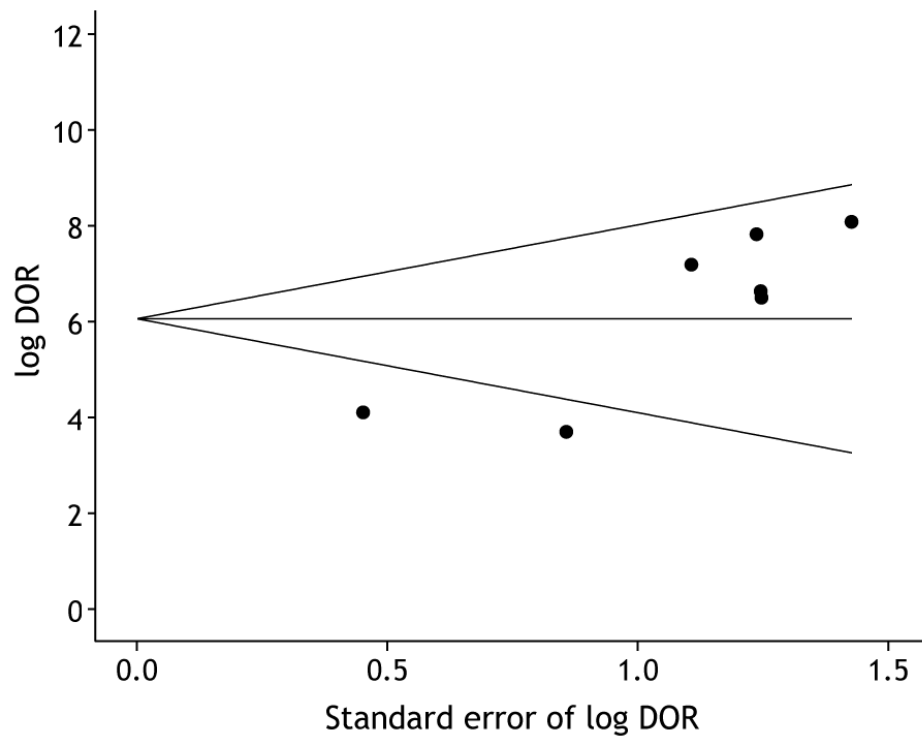


**Supplement Figure 3: Diagnostic Accuracy of IL-27, ADA and IFN- $\gamma$  in Distinguishing Patients with Tuberculous from Non-Tuberculous Pleural Effusions in Wuhan Cohort.**

In Panel A, the use of a cut-off value of 591.4 ng/L of IL-27 showed high sensitivity and specificity for the detection of tuberculous pleural effusion (TPE). In Panel B, receiver operating characteristic curve shows the diagnostic performance of IL-27 assay performed on pleural fluid samples obtained from Wuhan study that included 44 patients with TPE and 76 patients with non-TPE. In Panel C, the use of a cut-off value of 21.4 U/L of ADA showed relative high sensitivity and specificity for the detection of TPE. In Panel D, receiver operating characteristic curve shows the diagnostic performance of ADA assay performed on pleural fluid samples obtained from Wuhan study. In Panel E, the use of a cut-off value of 116.1 ng/L of IFN- $\gamma$  showed high sensitivity and specificity for the detection of TPE. In Panel F, receiver operating characteristic curve shows the diagnostic performance of IFN- $\gamma$  assay performed on pleural fluid samples obtained from Wuhan study.



**Supplement Figure 4: Flow Diagram of Selected Studies.**



**Supplement Figure 5: Funnel Graph for the Assessment of Potential Publication Bias in IL-27 in Pleural Fluid.** The funnel graph plots the log of the diagnostic odds ratio (DOR) against the standard error of the log of the DOR (an indicator of sample size). Each solid circle represents each study in the meta-analysis. The line in the centre indicates the summary DOR.