

literature showed that CPTA Results can vary considerably depending on the clinical setting from 6.6% for patients seen in A and E, to up to 31% for patients admitted in General Medicine with mean positive yield of 18.8%. The documentation of pre-test probability was also poor (between 0% and 24%). Results from UK teaching and non-teaching hospitals were similar.

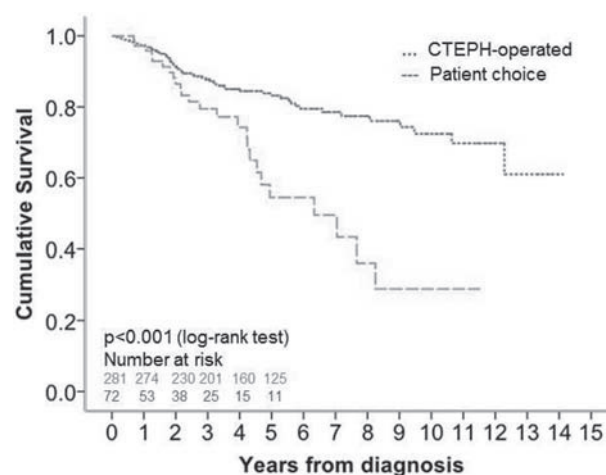
Conclusions Our regional clinical audit showed that our positive yield is lower than the recommended standards. We made good use of d-dimer testing when PE was suspected in patients with high pre-test probability. Adherence to current guidelines could increase the diagnostic yield and reduce costs and risks associated with CTPA scans. Extrapolated to a larger scale, this would translate into significant reduction in costs and risks associated with radiation and contrast exposure. Most of the reported clinical audits from UK hospitals revealed acceptable CTPA positive rates.

Abstract P182 Table 1 Audit results

	d-dimers	Positive CTPA result
Low Wells score (n=183)	Tested positive: 92 (50%)	11
	Not tested: 88 (49%)	6
	Negative: 3 (0.2%)	0
High Wells score (n=53)	Tested positive: 17 (32%)	4
	Not tested: 36 (68%)	13
	Negative: 0	-
Total=236 34 (14%)		

artery disease (p=0.031) and patient choice (declining surgery) (p<0.001) were independent predictors of mortality. For patients who declined surgery a median threshold of DLco 62%, right atrial pressure 11 mmHg, and SvO₂62% the positive and negative predictive values for 3 year survival were 31% and 100%, 32% and 95% and 30% and 97%, respectively.

Conclusion In a cohort of consecutive patients with CTEPH the long-term survival of patients undergoing PEA is excellent and superior to patients declining surgery and strongly favours surgical intervention in eligible patients. More work is required to understand factors influencing decision making in CTEPH and to ensure that patients are counselled and supported to make informed decisions.



Abstract P183 Figure 1

P183 IMPACT OF PATIENT CHOICE ON SURVIVAL IN PATIENTS WITH CHRONIC THROMBOEMBOLIC PULMONARY HYPERTENSION OFFERED PULMONARY ENDARTERECTOMY

¹SR Quadery, ²AJ Swift, ¹C Billings, ²AAR Thompson, ¹CA Elliot, ¹J Hurdman, ¹S Garrod, ¹A Charalampopoulos, ²I Sabroe, ¹I Armstrong, ¹N Hamilton, ¹P Sephton, ¹RA Lewis, ¹P Prasannan, ³DP Jenkins, ³J Pepke-Zaba, ³N Screaton, ²A Lawrie, ¹CS Johns, ¹S Rajaram, ¹C Hill, ²JM Wild, ¹R Condliffe, ¹DG Kiely. ¹Sheffield Teaching Hospitals NHS Foundation Trust, Sheffield, UK; ²University Of Sheffield, Sheffield, UK; ³Papworth Hospital NHS Foundation Trust, Cambridge, UK

10.1136/thoraxjnl-2017-210983.325

Introduction Chronic thromboembolic pulmonary hypertension (CTEPH) is potentially curable by pulmonary endarterectomy (PEA). Despite this a significant proportion of patients offered PEA decline surgery.

Objective To compare long term survival and prognostic indicators in patients with technically operable CTEPH who underwent PEA and those who declined surgery.

Methods Data were collected for consecutive, treatment-naïve patients diagnosed with CTEPH between 2001 and 2014 identified from the ASPIRE-pulmonary-hypertension-registry.

Results Of 588 patients with CTEPH, 368 patients were offered surgery. Seventy six percent (n=281) underwent PEA, 20% (n=72) declined surgery and 4% (n=15) were planned to undergo surgery. Five year survival was superior in patients undergoing PEA at 83% compared to patients who declined surgery at 56% (p=0.001, log-rank test). In patients who were offered surgery, mixed venous oxygen saturation (SvO₂) (p=0.003), gas transfer (DLco) (p=0.042), history of coronary

P184 AGE SHOULD NOT BE A BARRIER TO PULMONARY ENDARTERECTOMY IN CAREFULLY SELECTED PATIENTS

M Newnham, J Hernandez-Sanchez, J Dunning, C Ng, S Tsui, K Bunclark, K Sheares, D Taboada, M Toshner, J Pepke-Zaba, D Jenkins, J Cannon. *Papworth Hospital, Cambridge, UK*

10.1136/thoraxjnl-2017-210983.326

Introduction We previously reported that hospital survival in patients over 70 years undergoing pulmonary endarterectomy (PEA) was comparable to those under 70, albeit with longer hospital and intensive care unit (ICU) stays.¹ Octogenarians have acceptable morbidity and mortality outcomes following cardiac surgery. We aimed to assess if this also applies to PEA surgery.

Methods Consecutive patients undergoing PEA for chronic thromboembolic pulmonary hypertension (CTEPH) from June 2006 to August 2016 at the National referral centre for PEA were included in a retrospective analysis. The cohort was dichotomized into over and under 80 years according to age at surgery. Pre-operative baseline and post-operative 3–6 month follow-up data were recorded, with follow-up data included until November 2016.

Results 1152 individuals underwent PEA (1115 under 80 years, 37 over 80) during the study period. Baseline and 3–6 month follow up variables and outcomes are summarised in Table 1. Survival is lower in the over 80 group (Log-rank test, p=0.002), but is no different from an age and sex