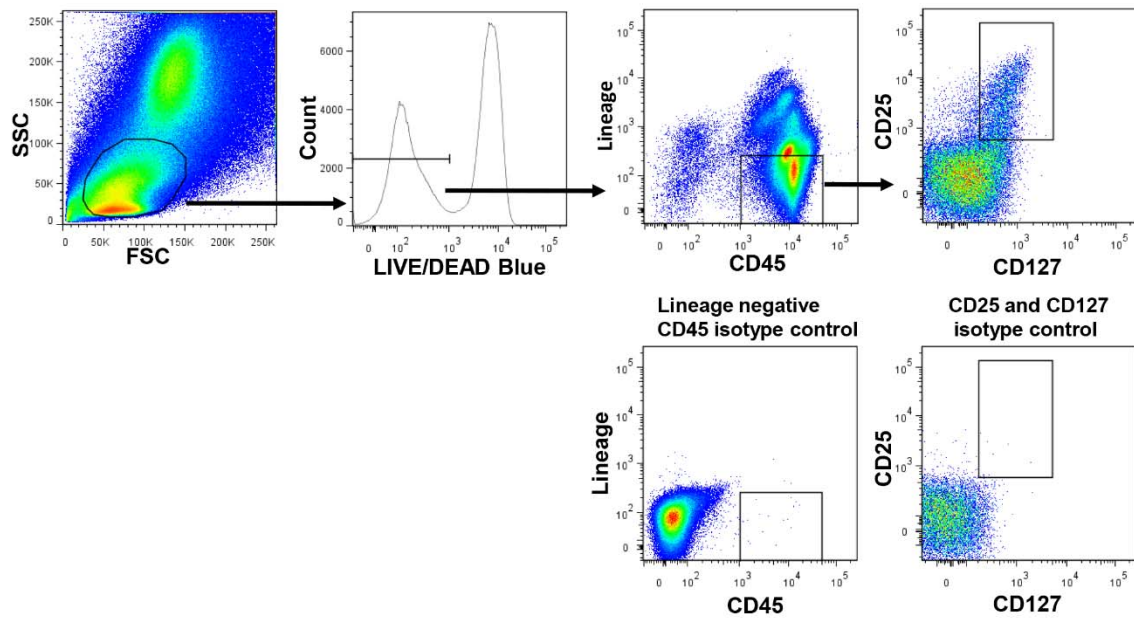
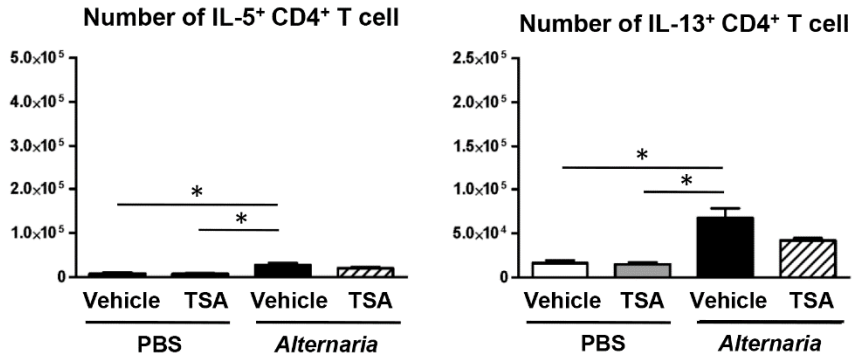


Supplementary Figure 1: The Gating Strategy of ILC2. ILC2 were identified by flow cytometry as FSC-A/SSC-A low, CD45 positive, lineage marker negative, and CD25, CD127 double positive cells.

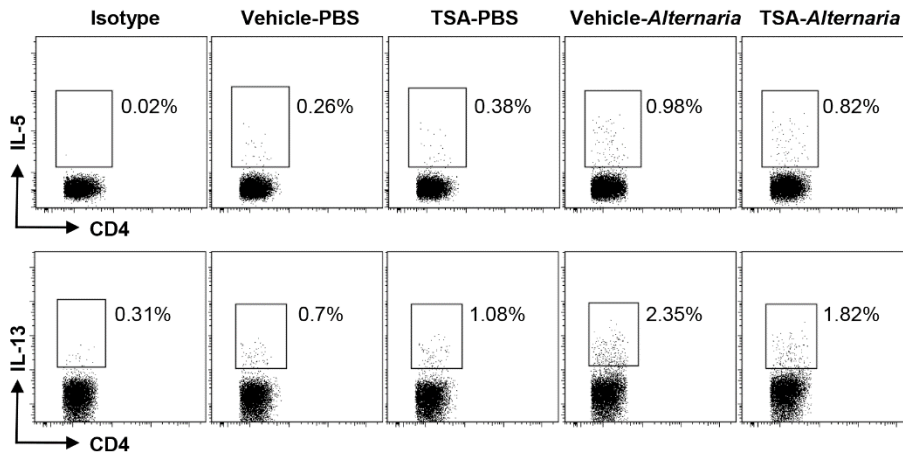


Supplementary Figure 2: (A) The number of IL-5⁺ and IL-13⁺ CD4⁺ T cells in the lung from the mice challenged with PBS or *Alternaria* extract following vehicle or TSA treatment. (B) Representative plots of IL-5 and IL-13 intracellular staining on CD4⁺ T cells in the lung from the mice challenged with PBS or *Alternaria* extract following vehicle or TSA treatment. The results are shown as mean ± S.E.M. of 4 mice in each group. * *P* < 0.05

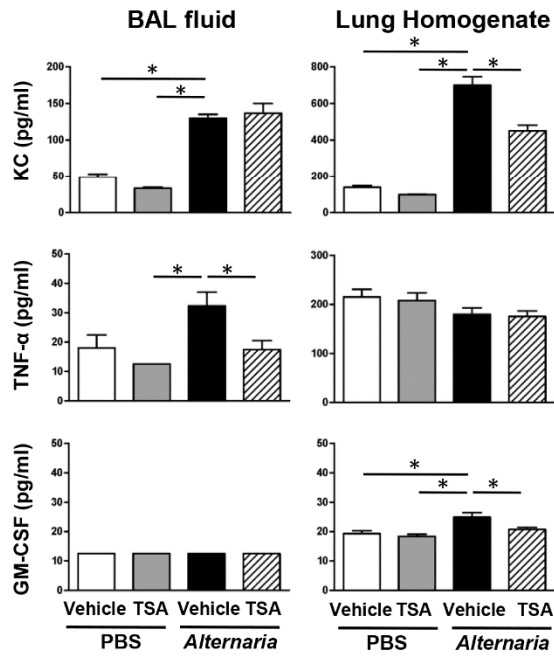
A



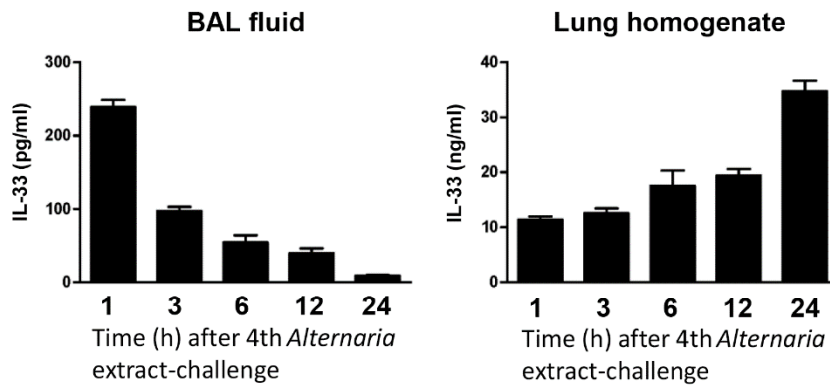
B



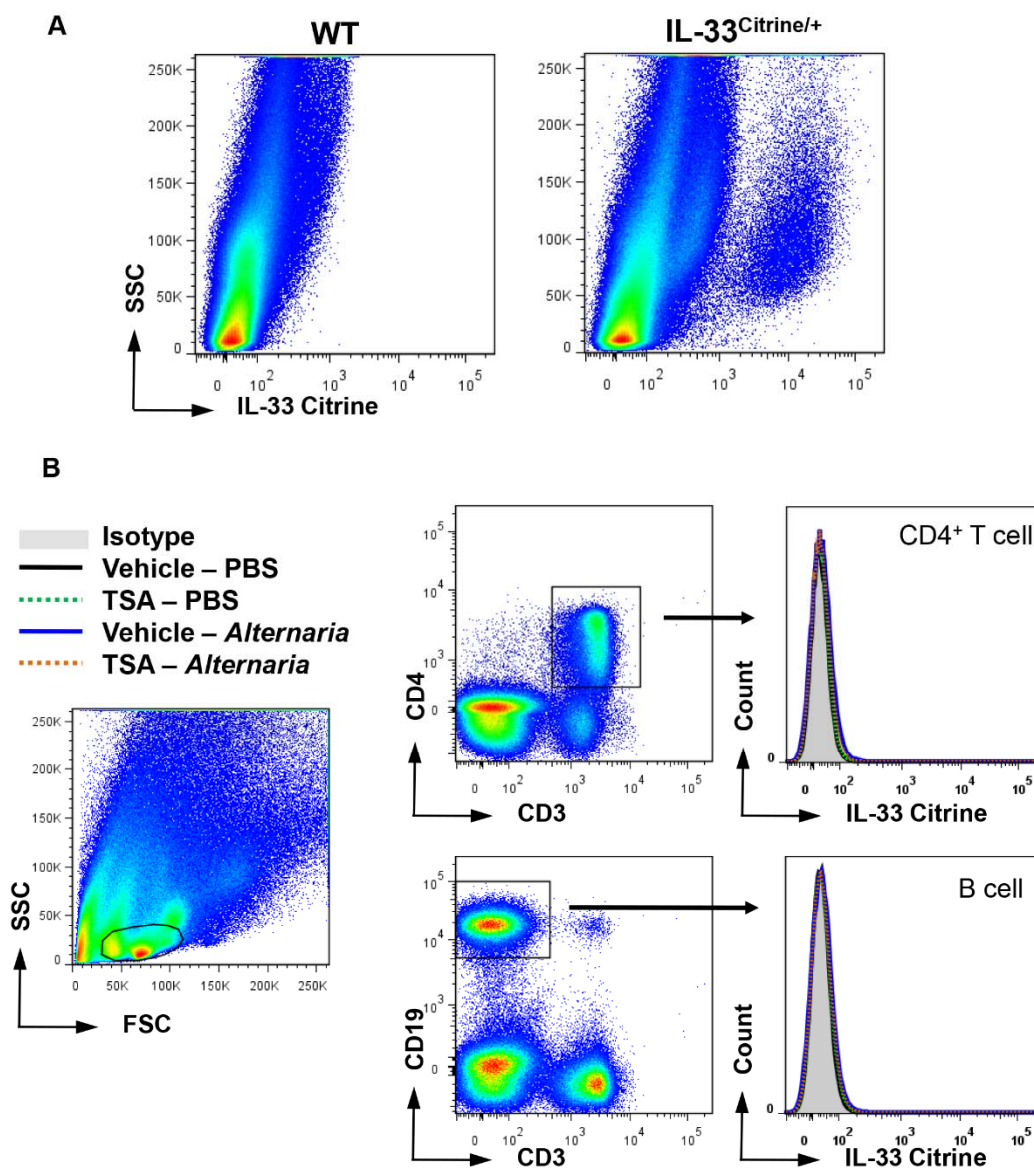
Supplementary Figure 3: BAL fluids and lungs were harvested 24 h after the last *Alternaria* extract-challenge to measure the protein expression of KC, TNF- α , and GM-CSF. The results are shown as mean \pm S.E.M. of 4 mice in PBS-challenged groups and 6 mice in *Alternaria* extract-challenged groups. * $P < 0.05$



Supplementary Figure 4: BAL fluids and lungs were harvested 1, 3, 6, 12 and 24 h after the last *Alternaria* extract-challenge in the 4 consecutive day protocol to measure the protein level of IL-33. The results are shown as mean \pm S.E.M. of 4 mice.



Supplementary Figure 5: (A) Citrine (IL-33) expression in lung cells from naïve WT and IL-33^{Citrine/+} reporter mouse. (B) The gating strategies and representative histograms of citrine (IL-33) expression on CD4⁺ T cell, B cell, macrophages, DC, eosinophils and granulocytes cells in the lung from WT mice (filled gray area) or IL-33^{Citrine/+} reporter mice challenged with vehicle-PBS (solid black line), TSA-PBS (dotted green line), vehicle-*Alternaria* extract (solid blue line), and TSA-*Alternaria* extract (dotted orange line).



B

- Isotype
- Vehicle – PBS
- ⋯ TSA – PBS
- Vehicle – *Alternaria*
- ⋯ TSA – *Alternaria*

