

## BTS STATEMENT

# Managing passengers with respiratory disease planning air travel: British Thoracic Society recommendations

British Thoracic Society Standards of Care Committee

*Thorax* 2002;57:289–304

### INTRODUCTION

#### Need for recommendations on managing passengers with lung disease planning air travel

Air travel is now a common mode of travel for millions, with a single UK airline carrying over 33 million passengers annually. It is estimated that over one billion passengers travel by air worldwide each year, and for the majority this is without hazard.

Despite current uncertainties about the future of the airline industry, it seems likely that air travel will continue to offer a convenient form of transport for many. In the longer term passenger numbers may therefore increase further. Given the rising age of western populations, the age of air travellers is also likely to increase, with greater propensity for medical impairment. Over 25 years ago it was already estimated that 5% of commercial airline passengers were ambulatory patients with some illness including chronic obstructive pulmonary disease (COPD).<sup>1</sup>

There are still no established methods for quantifying the risk of in-flight medical problems. However, a North American service offering expert assistance by radio link for in-flight medical emergencies logged 8500 calls in 2000, of which 11% were respiratory in nature.<sup>2</sup> Physicians should therefore be aware of the potential effects of the flight environment in passengers with lung disease. One million residents of Denver, Colorado live at 5280 ft (1609 m) and coaches crossing high Alpine passes reach 10 000 ft (3048 m), indicating that moderate hypoxaemia is not generally hazardous. Nevertheless, greater awareness of the risks of air travel will enable physicians to encourage patients to fly safely wherever possible and increase the safety of fellow air passengers.

The aircraft crew are subject to regular medical examination but passengers are not. For potential passengers with lung disease it would clearly be valuable for their physician to have recommendations for assessing the fitness of their patients for flying. A recent national survey of respiratory physicians indicated that many would welcome advice.<sup>3</sup> Sources of available information include British and European,<sup>4,6</sup> North American,<sup>7</sup> and Canadian<sup>8</sup> COPD guidelines, aviation medicine textbooks,<sup>9</sup> supplements to the journal *Aviation, Space & Environmental Medicine*<sup>10–12</sup> and other publications on air travel.<sup>13</sup> However, these references may not always be readily accessible to physicians and do not all provide consistent, practical, or comprehensive coverage. In particular, there is disparity between European and North American guidelines, uncertainty about assessment methods, and failure to consider other respiratory causes of hypoxaemia such as pulmonary fibrosis.

To meet the need for consistent, practical, and comprehensive advice, the British Thoracic Society (BTS) Standards of Care Committee set up a Working Party to formulate national recommendations for managing patients with lung disease planning air travel. There is currently insufficient evidence to produce formal guidelines. The following recommendations are derived from literature reviews and aim to provide practical advice for respiratory physicians. They apply to commercial flights only and exclude emergency aeromedical evacuation situations.

### Purpose of recommendations

- To enhance safety for passengers with lung disease travelling by air and reduce the number of in-flight medical incidents due to respiratory disease.
- To increase recognition among healthcare professionals that patients with respiratory disease may require clinical assessment and advice before air travel.
- To provide an authoritative up to date literature review of available evidence.
- To provide consistent, practical, and comprehensive advice for healthcare professionals managing such patients.
- To formulate key research questions to provoke further investigation. This should produce a strengthened, high quality evidence base from which clearer evidence-based guidelines can be developed.
- To promote the development of methods for monitoring the size of the problem.

### Methods of production

The Working Party defined the target and purpose of the recommendations. Independent literature searches were performed by Working Party members from which a draft document was produced summarising current evidence and containing recommendations regarding (1) the flight environment, (2) physiological effects of exposure to altitude, (3) clinical assessment, (4) respiratory disorders presenting a possible risk for potential air travellers, and (5) oxygen supplementation. The document was reviewed by the Working Party and redrafted. It was then circulated to the BTS Standards of Care Committee and reviewers listed in Appendix 1 before being made available to BTS members on the members only section of the BTS website. A final draft was produced incorporating feedback after discussion and further review by the BTS Standards of Care Committee. The

Air Travel Working Party:  
Dr R K Coker (chair),  
Dr D A R Boldy,  
Dr R Buchdahl,  
Mr D Cramer,  
Professor D Denison,  
Wing Commander  
D P Gradwell,  
Professor J M B Hughes,  
Dr J A Innes,  
Dr A O C Johnson,  
Dr K P McKinlay,  
Dr M R Partridge

Correspondence to:  
Dr R Coker, Department of  
Respiratory Medicine,  
Hammersmith Hospital,  
Du Cane Road, London  
W12 0HS, UK;  
robina.coker@ic.ac.uk

## SUMMARY OF KEY POINTS AND RECOMMENDATIONS WITH AHCPR GRADING

### The flight environment and effects of altitude

Modern aircraft are pressurised to cabin altitudes up to 2438 m (8000 ft) although this maximum may be breached in emergencies. Cabin altitudes in Concorde are lower at around 1829 m (6000 ft). At 2438 m (8000 ft) the partial pressure of oxygen will have dropped to the equivalent of breathing 15.1% oxygen at sea level. In a healthy passenger the arterial oxygen tension ( $P_{aO_2}$ ) at 2438 m (8000 ft) will be influenced by age and minute ventilation, but will fall to 7.0–8.5 kPa (53–64 mm Hg,  $SpO_2$  85–91%). There is thus concern that altitude exposure may exacerbate hypoxaemia in patients with lung disease, and particular caution seems justified in those who are hypoxaemic at sea level. The physiological compensations for acute hypoxaemia at rest are mild to moderate hyperventilation (lowering of arterial carbon dioxide tension ( $P_{aCO_2}$ ) moderates the hyperventilation) and a moderate tachycardia.

### Pre-flight assessment for adults

The following groups should be assessed:

- severe COPD or asthma; [B]
- severe restrictive disease (including chest wall and respiratory muscle disease), especially with hypoxaemia and/or hypercapnia; [C]
- patients with cystic fibrosis; [C]
- history of air travel intolerance with respiratory symptoms (dyspnoea, chest pain, confusion or syncope); [C]
- co-morbidity with other conditions worsened by hypoxaemia (cerebrovascular disease, coronary artery disease, heart failure); [C]
- pulmonary tuberculosis; [C]
- within 6 weeks of hospital discharge for acute respiratory illness; [C]
- recent pneumothorax; [B]
- risk of or previous venous thromboembolism; [B]
- pre-existing requirement for oxygen or ventilator support. [C]

The following assessment is recommended:

- history and examination with particular reference to cardiorespiratory disease, dyspnoea, and previous flying experience; [C]
- spirometric tests (in non-tuberculous patients only); [C]
- measurement of  $SpO_2$  by pulse oximetry. Readings should be taken from a warm ear or finger after sufficient delay for the oximeter to display a stable reading. Blood gas tensions are preferred if hypercapnia is known or suspected. [C]

In those who are screened who have resting sea level oximetry between 92% and 95% with additional risk factors (table 1, p 293), hypoxic challenge testing is recommended (table 2, p 293). [C]

### Notes

(1) The following groups should not fly:

- patients with infectious tuberculosis must not travel by public air transportation until rendered non-infectious. Three smear negative sputum examinations on separate days in a person on effective antituberculous treatment indicates an extremely low potential for transmission, and a negative culture result virtually precludes potential for transmission; [B]
- those with a current closed pneumothorax should avoid commercial air travel. [C]

(2) Patients who have undergone major thoracic surgery should ideally delay flying for 6 weeks after an uncomplicated procedure. [C] Patients should only fly if essential, and formal medical assessment is required before departure. In practice, some airlines are prepared to accept patients within 2 weeks of major thoracic surgery. The relative risk of these two approaches is not known, but careful medical assessment is required beforehand, whichever is adopted.

(3) Lung cancer per se is not a contraindication to flying. However, associated respiratory diseases should be considered in their own right. [C]

(4) Additional precautions for all passengers:

- excess alcohol should be avoided before and during the flight, particularly in those with obstructive sleep apnoea and those at risk of venous thromboembolism; [C]
- individuals not receiving oxygen should remain mobile during the flight; [C]
- exercise without supplemental oxygen may worsen hypoxaemia; it may be prudent for the most compromised to use oxygen while walking on the plane and to let a flight attendant know how long they expect to be away from their seat; [C]
- the risk of thromboembolic disease should initiate prophylactic measures as detailed in the following summary; [B]
- patients should carry preventative and relieving inhalers in their hand luggage; [C]
- portable nebulisers may be used at the discretion of the cabin crew, but there is good evidence that spacers are as effective as nebulisers in treating asthma; [A]
- patients should check with their local or hospital pharmacists whether any medicine may be adversely affected by the extreme temperature in the hold baggage compartment; [C]

**SUMMARY OF KEY POINTS AND RECOMMENDATIONS WITH AHCPR GRADING (continued)**

- dry cell battery powered continuous positive airway pressure (CPAP) machines may be required by patients with obstructive sleep apnoea on long haul flights, but they must be switched off before landing; [C]
  - ventilator dependent patients should inform the airline of their requirements at the time of reservation, and a doctor's letter is required outlining the medical diagnosis, necessary equipment, recent blood gas results, and ventilator settings. A medical attendant is likely to be needed. Arrangements must be made for proceeding through air terminals before and after the flight. [C]
- (5) Logistics of air travel with oxygen: supplementary in-flight oxygen is usually prescribed at a rate of 2 l/min and should be given by nasal cannulae. In-flight oxygen need not be switched on until the plane is at cruising altitude, and may be switched off at the start of descent. For patients on oxygen at sea level, the rate should only be increased while at cruising altitude. [B]
- (6) In complex circumstances patients can be referred for testing in a hypobaric chamber. Centres are listed in Appendix 3.

Even with in-flight oxygen, travel cannot be guaranteed to be safe. Air travel is almost always possible with appropriate medical support, but the logistics and economic costs may outweigh the benefits in individual cases.

**Pre-flight assessment for children**

- It is prudent to wait for 1 week after birth before allowing infants to fly to ensure the infant is healthy. [C]
- If the infant has had any neonatal respiratory problems, the proposed journey should be discussed with a paediatrician and a hypoxic challenge test considered. [B]
- For oxygen dependent children including ex-premature infants with chronic lung disease (bronchopulmonary dysplasia) where flying is imperative, oxygen requirements should be titrated in a body box [B] as follows:

The infant, receiving oxygen via nasal cannulae, is placed in the body box in the company of a parent or carer, and SpO<sub>2</sub> monitored. The air in the body box is then diluted to 15% oxygen with nitrogen. Any fall in SpO<sub>2</sub> can be restored to the original value by titration of the flow of oxygen through the nasal cannulae. This flow of oxygen should then be supplied during the flight.

**Disease specific recommendations****Asthma**

- Assessment is recommended as described above.
- Preventative and relieving inhalers should be carried in the hand luggage.
- Portable nebulisers may be used at the discretion of cabin crew. They may be connected to the aircraft electrical supply on some but not all airlines. Some airlines can provide nebulisers for in-flight use and patients should check with the carrier when booking. Spacers are as effective as nebulisers.

**COPD**

- Assessment is recommended as described above.
- Passengers should travel on a non-smoking flight.
- Preventative and relieving inhalers should be carried in the hand luggage.
- Portable nebulisers may be used at the discretion of cabin crew. They may be connected to the aircraft electrical supply on some but not all airlines. Some airlines can provide nebulisers for in-flight use and patients should check with the carrier when booking. Spacers are as effective as nebulisers.
- Patients prescribed in-flight oxygen should receive oxygen while visiting high altitude destinations (see Appendix 4).
- Many airports can provide wheelchairs for transport to and from the aircraft.

**Cystic fibrosis**

- Assessment by the cystic fibrosis physician is recommended as described above.
- Medications should be divided between hand and hold baggage to allow for delays and stopovers.
- Portable nebulisers may be used at the discretion of cabin crew and can be connected to the aircraft electrical supply on some but not all airlines. Some airlines can provide nebulisers for in-flight use and patients should check with the carrier when booking. Spacers are as effective as nebulisers.
- Passengers should undertake physiotherapy during stopovers.
- In-flight nebulised antibiotics and DNase should not be necessary.
- Passengers should check with their pharmacist whether any medicine may be adversely affected by extreme temperatures in the hold baggage compartment.
- Many airports can provide wheelchairs for transport to and from the aircraft.

**Infections**

- Assessment is recommended as described above.
- Aircraft boarding should be denied to those known to have infectious tuberculosis.
- Patients with infectious tuberculosis must not travel by public air transportation until rendered non-infectious. WHO guidelines state that three smear negative sputum examinations on separate days in a person on effective antituberculous treatment indicate an extremely low potential for transmission, and a negative sputum culture result virtually precludes potential for transmission.<sup>14</sup> This may be over-cautious. While this remains the policy for HIV positive patients, HIV negative patients who have completed 2 weeks of effective antituberculous treatment are, in practice, generally considered non-infectious.<sup>15</sup>

**SUMMARY OF KEY POINTS AND RECOMMENDATIONS WITH AHCPR GRADING (continued)****Fibrosing alveolitis**

- Assessment is recommended as described above.

**Neuromuscular disease and kyphoscoliosis**

- Assessment is recommended as described above.

**Ventilator dependent patients**

For all patients:

- The airline must be consulted before reservation.
- A doctor's letter is required outlining the medical diagnosis, necessary equipment, recent blood gas results, and ventilator settings. It should state that the ventilator must travel in the cabin as extra hand luggage.
- Long haul flights are best avoided.
- A dual 110/240 volt function is recommended so that the ventilator is compatible with the voltage at the intended destination.
- A dry cell battery pack is essential for back-up and for proceeding through air terminals before and after the flight.

For patients on permanent (24 hour) ventilation:

- Ventilator dependent patients need a medical escort.
- An electrical supply can be provided on the flight if arranged in advance.
- Wet acid batteries are prohibited.
- The medical escort must be competent to change the tube, operate suction, and ambubag the patient for emergency ventilation if electrical power fails.
- A spare tracheostomy tube and battery powered suction must be taken.
- Owing to reduced barometric pressure at altitude, patients with a tracheostomy should have the air in the cuff of their tube replaced with an equal volume of saline before boarding.

**Obstructive sleep apnoea (OSA)**

- Assessment is recommended as described above.
- The airline must be consulted before reservation.
- A doctor's letter is required outlining the medical diagnosis and necessary equipment. It should state that the CPAP machine should travel in the cabin as extra hand luggage.
- Long haul flights are best avoided.
- A dual 110/240 volt function is recommended so that the CPAP machine is compatible with the voltage at the intended destination.
- Dry cell battery powered CPAP can be used during the flight but must be switched off before landing.
- Patients should avoid alcohol immediately before and during the flight.
- Patients with mild snoring and hypersomnolence are unlikely to require CPAP during the flight.
- Patients with significant desaturation intending to sleep during the flight should consider using their CPAP machine.
- Patients with significant desaturation should use CPAP during sleep while visiting high altitude destinations (see Appendix 4).

**Previous pneumothorax**

- Patients with a current closed pneumothorax should not travel on commercial flights.
- Patients may be able to fly 6 weeks after a definitive surgical intervention and resolution of the pneumothorax. Careful medical assessment is required beforehand.
- Patients who have not had surgery must have had a chest radiograph confirming resolution, and at least 6 weeks must have elapsed following resolution before travel.
- Although recurrence is unlikely during the flight, the consequences at altitude may be significant given the absence of prompt medical care. This is particularly true for those with additional co-existing lung disease. Passengers may wish to consider alternative forms of transport within 1 year of the initial event.

**Venous thromboembolic disease (VTE)**

- All passengers should avoid excess alcohol and caffeine containing drinks, and preferably remain mobile or exercise their legs during the flight.
- Passengers at slightly increased risk of VTE include those aged over 40, those who are obese or who have extensive varicose veins, polycythaemia, and those who have undergone minor surgery in the previous 72 hours. In addition to the above precautions they should avoid alcohol and caffeine containing drinks, take only short periods of sleep unless they can attain their normal sleeping position, and avoid sleeping pills. Physicians may wish to recommend support tights or non-elasticated long socks.
- Passengers at moderately increased risk of VTE include those with a family history of VTE, recent myocardial infarction, pregnancy or oestrogen therapy (including hormone replacement therapy and some types of oral contraception), postnatal patients within 2 weeks of delivery, and those with lower limb paralysis, recent lower limb trauma or recent surgery. In addition to the above precautions, physicians may wish to recommend pre-flight aspirin and graduating compression stockings.

**SUMMARY OF KEY POINTS AND RECOMMENDATIONS WITH AHCPR GRADING (continued)**

- Passengers at high risk of VTE include those with previous VTE, thrombophilia, those who have undergone within the previous 6 weeks, those with a history of previous stroke, or current known malignancy. If flying cannot be avoided or delayed, as an alternative to low dose aspirin it may be prudent to recommend either low molecular weight heparin or formal anticoagulation with an international normalised ratio (INR) in the therapeutic range (2–3) before departure. Depending on the length of stay abroad, passengers may need to remain anticoagulated until the homeward journey.

**Thoracic surgery**

- Assessment is recommended as described above.
- Air travel should be delayed for at least 2 weeks after uncomplicated chest surgery, and confirmation of resolution of any pneumothorax or collected air by chest radiography is recommended. Careful medical assessment is required before travel.

**Logistics of travel with oxygen**

**For all patients**

- The need for oxygen should be disclosed when the patient books with the airline.
- The airline medical department will issue a MEDIF form (see Appendix 5) or their own medical form. This requires completion by both the patient and the GP or hospital specialist and requests information about the patient’s condition and oxygen requirements. The airline’s Medical Officer then evaluates the patient’s needs.
- The need for oxygen on the ground and while changing flights must be considered.
- The airline should be consulted in advance if the patient wishes to use humidification equipment.
- Airlines do not provide oxygen for use at the airport. Some airports restrict oxygen use in the airport because of the risk of explosion.
- In-flight oxygen flow is usually limited to 2 l/min or 4 l/min.
- Patients cannot use their own cylinder or concentrator but may be able to take these items with them as baggage if empty. They should check with the airline first. Charges may be made for this service, in addition to a charge for in-flight oxygen.
- Patients are advised to check charges with several airlines before reservation as considerable variation exists in fees and services.

**For totally oxygen dependent patients**

- Special arrangements must be made with the airline and airport authorities. Transport to the aircraft by ambulance is possible, and some airports have a specially designated medical unit.
- Patients should have a supply of all their usual medication, a copy of their medical form, and be accompanied.
- A direct flight is preferable. If connecting flights are unavoidable, separate arrangements must be made for oxygen while on the ground during stopovers. The main oxygen distributors have their own international distribution network and can supply oxygen at intended destinations if active in those areas.
- Patients normally using long term oxygen therapy (LTOT) should ensure that they have LTOT throughout their stay. In case of difficulty, the major UK lung charities may be able to advise.
- Attention should be drawn to the need to make prior arrangements for the return as well as outward journey.

**Table 1** Results of initial assessment

Screening result	Recommendation
Sea level SpO <sub>2</sub> >95%	Oxygen not required [B]
Sea level SpO <sub>2</sub> 92–95% and no risk factor*	Oxygen not required [C]
Sea level SpO <sub>2</sub> 92–95% and additional risk factor*	Perform hypoxic challenge test with arterial or capillary measurements [B]
Sea level SpO <sub>2</sub> <92%	In-flight oxygen [B]
Receiving supplemental oxygen at sea level	Increase the flow while at cruising altitude [B]

\*Additional risk factors: hypercapnia; FEV<sub>1</sub> <50% predicted; lung cancer; restrictive lung disease involving the parenchyma (fibrosis,) chest wall (kyphoscoliosis) or respiratory muscles; ventilator support; cerebrovascular or cardiac disease; within 6 weeks of discharge for an exacerbation of chronic lung or cardiac disease.

**Table 2** Results of hypoxic challenge test (15% FiO<sub>2</sub> for 20 minutes) with AHCPR grading (Appendix 2)

Hypoxic challenge result	Recommendation
Pao <sub>2</sub> >7.4 kPa (>55 mm Hg)	Oxygen not required [B]
Pao <sub>2</sub> 6.6–7.4 kPa (50–55 mm Hg)	Borderline; a walk test may be helpful [C]
Pao <sub>2</sub> <6.6 kPa (<50 mm Hg)	In-flight oxygen (2 l/min) [B]



strength of evidence was agreed and the recommendations graded according to the Scottish Intercollegiate Guideline Network (SIGN) criteria shown in Appendix 2.

The search engines used were Medline (English language) 1966–99 and the Cochrane Library database. The word titles were: accidents, altitude, anoxia, aeroplane, aerospace medicine, asthma, aircraft, aircraft emergencies, air travel, aviation, bronchiectasis, bronchitis, COPD, cross infection, cystic fibrosis, decompression chamber, emergencies, emphysema, fibrosing alveolitis, fitness for air travel, fitness to fly, hypoxia inhalation simulation test, hypoxia inhalation test, infection, lung diseases (restrictive), *Mycobacterium tuberculosis*, opportunistic infections, passenger, pneumothorax, rehabilitation, pulmonary fibrosis, respiratory failure, respiratory tract disease, respiratory tract infections, thoracic surgery, travel, traveller, venous thromboembolism, walking test.

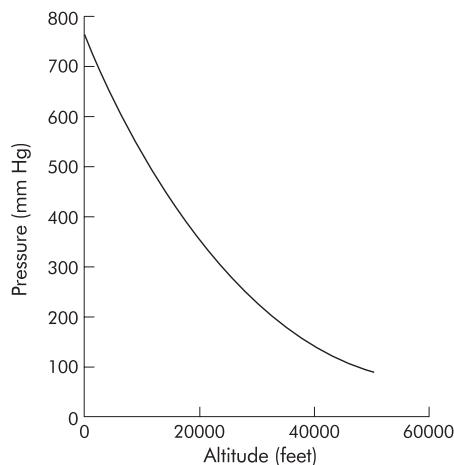
A summary of the recommendations for general practitioners is available on the *Thorax* website ([www.thoraxjnl.com](http://www.thoraxjnl.com)) and the website of the British Thoracic Society ([www.brit-thoracic.org.uk](http://www.brit-thoracic.org.uk)).

## BACKGROUND LITERATURE REVIEW

### The flight environment

To understand how the flight environment influences physiology and occasionally pathology, it is useful to consider the physical properties of the atmosphere and changes that occur on ascent to altitude. The atmosphere consists of several concentric “shells” around the Earth. The innermost shell is the troposphere, which extends from ground level to 9144 m (30 000 ft) at the poles and 18 288 m (60 000 ft) at the Equator. Conventional aircraft operate in this region. It is characterised by a relatively constant decline in temperature with increasing altitude at a rate of 1.98°C/305 m (1000 ft) ascent. Air is compressed by gravity. Atmospheric pressure is therefore greatest at sea level and declines logarithmically with ascent (fig 1). Small changes in height at low altitude thus cause a much greater pressure change than the same change in height at high altitude. A conversion chart from feet to metres is shown in the table in Appendix 6.

The troposphere has a constant composition containing 21% oxygen, 78% nitrogen, and 1% other gases (including argon and carbon dioxide, the latter being present at a concentration of 0.03%). It is the fall in the partial pressure of oxygen as total pressure declines on ascent that can give rise to hypobaric hypoxia, not a change in its percentage in air. The changes in pressure and temperature have other physical effects as described by the gas laws. Boyle’s law predicts that,



**Figure 1** Relationship between atmospheric pressure (mm Hg) and altitude (feet).

as pressure falls on ascent, there will be an inversely proportional increase in gas volumes. This affects body parts where gases are trapped, including the middle and inner ear, sinuses, and intestines. The same effect occurs in the lungs, although gas in free communication with ambient air equilibrates easily. Gas trapped in bullae or a closed pneumothorax is unlikely to equilibrate as rapidly, if at all. The volume of a gas is also related to temperature, but the temperature of gases trapped in the body stays constant at 37°C.

Cabin pressurisation in modern aircraft ensures that the effective altitude to which occupants are exposed is much lower than that at which the aircraft is flying. Commercial aircraft are not pressurised to sea level but to a relatively modest intermediate cabin altitude. This allows the aircraft to fly at much higher altitudes, which is fuel efficient for jet engines and more comfortable since it avoids much turbulence. Aircraft cabin altitude can thus approach 2438 m (8000 ft) while the aircraft is flying at 11 582 m (38 000 ft). A pressure differential therefore exists across the cabin wall, commonly of up to 9 pounds per square inch (psi). International aviation regulations<sup>16</sup> stipulate that, at a plane’s maximum cruising altitude, the cabin pressure should not exceed 2438 m (8000 ft). This may be exceeded in emergencies. One study of in-flight cabin altitude on 204 scheduled commercial aircraft flights has revealed significant variations in cabin altitude.<sup>17</sup>

In the event of failure of the cabin pressurisation system at high altitude, all occupants would require supplemental oxygen to prevent an unacceptable degree of hypoxaemia. Commercial aircraft are thus equipped with an emergency oxygen system for passengers, demonstrated before each flight in accordance with civil aviation regulations. However, some passengers with impaired respiratory function may be unusually susceptible to the effects of ascent even to normal cabin altitudes. It is these problems which are addressed here. These recommendations apply only to larger commercial aircraft. They do not apply to small private or unpressurised aircraft operating under general aviation regulations.<sup>18</sup>

### Physiological effects of exposure to altitude

Breathing air at 2438 m (8000 ft) and 1524 m (5000 ft) is equivalent to breathing 15.1% and 17.1% oxygen at sea level. In healthy subjects exposed to these conditions, their  $P_{aO_2}$  will be influenced by their age and minute ventilation, but the  $P_{aO_2}$  is likely to fall to 7.0–8.5 kPa (53–64 mm Hg,  $Sp_{O_2}$  85–91%).<sup>19,20</sup> However, healthy passengers do not generally experience symptoms. Conversion data to kPa and mm Hg are shown in Appendix 7.

### Clinical pre-flight assessment

There are currently three procedures used to assess whether patients are fit to fly: (1) the 50 metre walk, (2) predicting hypoxaemia from equations, and (3) the hypoxic challenge test.

#### The 50 metre walk

The ability to walk 50 metres without distress is traditionally favoured by airline medical departments because of its simplicity, but it is often the only subject of enquiry and is not verified. There is no evidence validating this test. Although this may seem a crude assessment, the ability to increase minute ventilation and cardiac output in response to an exercise load is a good test of cardiorespiratory reserve. It is also a common sense approach to simulating the stress of the additional hypoxaemia patients will experience at rest during a flight. Respiratory physicians have experience of the value of walk tests in other contexts, including the six or 12 minute walk and the shuttle walk test.<sup>21–23</sup> Such tests are increasingly being used as part of the assessment of patients for lung volume reduction surgery and lung transplantation.

The walk test used should be that in use in the laboratory where the assessment is being performed. Failure to complete the task (in terms of distance or time) or moderate to severe respiratory distress (recorded on a visual analogue scale) will alert the physician and the patient to the possible need for in-flight oxygen. Walk tests are obviously not suitable for those with lower limb arthritis or neuromuscular weakness.

### Predicting hypoxaemia from equations

Some centres use one of several equations to predict  $P_{aO_2}$  or  $Sp_{O_2}$  from measurements at sea level (see Appendix 8).<sup>24–28</sup> The equations have been derived almost exclusively from patients with COPD who have had measurements of  $P_{aO_2}$  in a hypobaric chamber, or before and during exposure to simulated altitude while breathing 15% inspired oxygen from a reservoir bag. Measurements of forced expiratory volume in 1 second ( $FEV_1$ ) may improve the accuracy of predicted values.<sup>25, 26</sup> One weakness is that the 90% confidence limits are  $\pm 1$  kPa ( $\pm 2–4\%$   $Sp_{O_2}$ ). However, the predictions are reliable enough to establish upper and lower thresholds for “no in-flight oxygen required” ( $Sp_{O_2} > 95\%$ ) or “in-flight oxygen needed” ( $Sp_{O_2} < 92\%$ ) (table 1). Flight duration and cabin conditions are not reproduced.

### Hypoxic challenge test

The ideal test, which is to expose a subject to hypoxia in a hypobaric chamber, is not widely available. The hypoxic challenge test described by Gong *et al* is therefore often used.<sup>27</sup> It assumes that breathing hypoxic gas mixtures at sea level (normobaric hypoxia) equates to the hypobaric hypoxia of altitude.<sup>29</sup> The maximum cabin altitude of 2438 m (8000 ft) can be simulated at sea level with a gas mixture containing 15% oxygen in nitrogen. Subjects are usually asked to breathe the hypoxic gas mixture for 20 minutes or until equilibration. Saturation is monitored throughout, and blood gas tensions measured before and on completion.

Fifteen percent oxygen can be administered in several ways. Oxygen and nitrogen can be mixed in the appropriate proportions in a Douglas bag or cylinders of 15% oxygen in nitrogen can be bought from British Oxygen Corporation. The gas mixture can be given with a non-rebreathing valve with a mouthpiece or tight fitting face mask. It is also possible to fill a body box with 15% oxygen to provide the hypoxic environment without using a face mask or mouthpiece.<sup>30</sup> This allows oxygen requirements to be titrated accurately using nasal prongs to supply oxygen within the body box. A similar but unpublished suggestion is to use a hood over the subject's head filled with 15% oxygen. Similar levels of hypoxic gas mixtures can be given with a commercial 40% Venturi mask if nitrogen is used as the driving gas. The entrained air dilutes the nitrogen producing a 14–15% oxygen mixture under experimental conditions in subjects with COPD.<sup>31</sup> Using a 35% Venturi mask will yield a 15–16% oxygen mixture.

A subject is usually judged to require in-flight oxygen if the  $P_{aO_2}$  falls below 6.6 kPa (50 mm Hg) or  $Sp_{O_2}$  falls below 85%.<sup>30</sup> These figures appear purely arbitrary with no supporting evidence, but many physicians have adopted them as a reasonable compromise. Hypoxic challenge testing is the pre-flight test of choice for patients with hypercapnia. As with equations, flight duration and cabin conditions are not reproduced.

### Fitness to fly in childhood

The physiology of children's lungs differs from that of adults. In particular, during early life compliance is lower while residual volume and airway resistance are higher.<sup>32</sup> In the neonatal period regional lung perfusion may remain labile with estimates of a 10% persistent right to left pulmonary shunt in healthy infants at 1 week of age.<sup>33</sup> Fetal haemoglobin

is present in significant amounts up to 3 months of age. Its effect on the oxygen dissociation curve will be to enhance loading of oxygen in a hypoxic environment but possibly to decrease unloading in peripheral tissues.<sup>34</sup> Some of these factors may explain why the response to a hypoxic environment is less predictable in infants than it is in adults. In an otherwise normal term infant we recommend a delay of 1 week after birth to be sure the infant is otherwise healthy.

Should infants and children with lung disease undergo tests of fitness to fly? There is very little documented evidence of what happens to such children during flight. The spectrum of disease is wide. Infants, especially those born prematurely at less than 32 weeks gestation, who develop an acute viral respiratory infection are known to be at risk of apnoea because they appear to revert to a more immature pattern of breathing.<sup>35, 36</sup> Exposure to a hypoxic environment at this time may increase the risk of apnoea. Ex-premature infants who develop respiratory infection should therefore probably not fly under the age of 6 months after the expected date of delivery.

Children with chronic lung disease such as cystic fibrosis may be better adapted to a hypoxic environment, possibly through changes in haemoglobin oxygen dissociation characteristics. A recent study of 87 children with cystic fibrosis suggested that pre-flight spirometric testing is a better predictor of desaturation during flight than hypoxic challenge.<sup>37</sup>

We recommend that infants with any history of neonatal respiratory illness and children with hypoxia due to chronic lung disease such as cystic fibrosis should undergo pre-flight assessment. This may include hypoxic challenge testing in addition to spirometric tests. The most practical and non-invasive way of performing a hypoxic challenge test is to titrate the extra oxygen requirement of the infant or young child in a body box as described in the summary.

### Respiratory disorders with potential complications for air travellers

#### Asthma

Guidelines were identified relating to professional aircrew and potential recruits with asthma, but none were found relating to passengers. The flight environment experienced by commercial passengers should not pose a problem for most patients with asthma. In a review of all consecutive in-flight medical incidents reported for QANTAS airlines in 1993 there were 454 significant medical incidents, 9% of which were reported as respiratory tract infection or asthma.<sup>38</sup> A review of incidents on US commercial aircraft where an enhanced medical kit was used found that 10% of 362 episodes were due to asthma, lung disease or breathlessness.<sup>39</sup>

All airlines permit use of dry cell battery operated nebulisers, but there is usually a restriction during take off and landing because of the risk of electrical interference.<sup>40</sup> However, a Cochrane review has shown that spacers are as effective as nebulisers in treating acute asthma.<sup>41</sup> Co-morbidity may present a problem if the patient has severe airflow obstruction and hypoxia or if there is complicating cardiac disease. Low cabin humidity may present a theoretical risk of bronchospasm as a result of water loss from bronchial mucosa. A doctor's letter describing the patient's condition and listing medications is recommended.<sup>42</sup>

#### Cardiac disease

Cardiac disease is considered here briefly because it often co-exists with lung disease and may give rise to symptoms attributable to respiratory disease. Co-morbidity may present more of a risk to the passenger than the respiratory disease alone, although no data exist to support or refute this view. One study measured  $Sp_{O_2}$  at simulated altitudes and on commercial flights in 12 patients with cyanotic congenital heart disease (CCHD) and acquired pulmonary hypertension and in 27 control subjects.<sup>43</sup> At the simulated altitude (equivalent to

$FiO_2$  15%) mean  $SpO_2$  fell from 86% (range 69–98%) to 78% (range 56–90%) in the patients and from 98% to 90% in the controls. During air travel the mean in-flight  $SpO_2$  was higher at 83% (range 78–94%). There were no changes in lactic acid concentrations, pH, or  $Paco_2$ , and no clinical problems.

The tolerance of patients with cardiorespiratory disease in a stable clinical condition to a moderate increase in hypoxaemia is unremarkable since they are effectively “acclimatised” to hypoxia. From the point of view of oxygen delivery to the tissues, a fall in  $SpO_2$  of 10% is easily overcome by a similar percentage increase in cardiac output. Hypoxaemia is a cardiac stimulant, and even patients in severe but stable heart failure can increase their cardiac output by 50% on mild exercise.

## COPD

Data on patients with COPD are limited, and existing guidelines contain largely empirical advice based on relatively small studies. In addition to the risk of hypoxaemia, patients with severe COPD may be put at risk from high levels of carboxyhaemoglobin resulting from smoking. They may experience expansion of non-functioning emphysematous bullae and abdominal gases which could further compromise lung function.

Gong *et al*<sup>77</sup> studied 22 patients (13 men) with stable mild COPD ( $FEV_1$  <80% predicted), 17 of whom reported variable discomfort (chest tightness or exertional dyspnoea) on previous flights. They inhaled sequential gas mixtures of 20.9% (sea level baseline), 17.1% (simulating 1524 m), 15.1% (simulating 2438 m), 13.9% (simulating 3048 m), and 20.9% oxygen (sea level recovery). With 15.1% inspired oxygen there was a mean fall in  $SpO_2$  of 11% from 94% to 83%. The lowest recordings were 87% on 21% inspired oxygen and 74% on 15.1% inspired oxygen. Progressive hypoxia induced mild hyperventilation resulting in small but significant falls in  $Paco_2$ . Supplemental oxygen was given during inhalation of 15.1% oxygen in five subjects and 13.9% oxygen in 16.  $Pao_2$  increased significantly with supplemental oxygen and  $Paco_2$  returned to baseline or, in eight subjects, rose modestly above baseline. Heart rate rose and asymptomatic cardiac dysrhythmias occurred in 10 subjects; blood pressure was unchanged. Eleven subjects had no symptoms and 11 reported mild symptoms which did not correlate with hypoxia or hypoxaemia. Variable sleepiness noted by the investigators was partly reversed by supplemental oxygen.

Dillard *et al*<sup>78</sup> examined 100 patients (retired military personnel and dependents) with severe COPD over a period of 28 months. Forty four travelled on commercial flights, of whom eight reported transient symptoms during air travel but reached their destination apparently without complications. Those who did not travel by air had a lower mean  $FEV_1$  and greater use of domiciliary oxygen, suggesting that many patients with COPD choose not to fly.

Christensen *et al*<sup>79</sup> studied 15 patients with COPD with  $FEV_1$  <50% predicted and sea level  $SpO_2$  >94%,  $Pao_2$  >9.3 kPa. Arterial blood gas tensions were measured at sea level, at 2438 m (8000 ft) and 3048 m (10 000 ft) in an altitude chamber at rest and during light exercise (20–30 watts). At 2438 m (8000 ft)  $Pao_2$  fell below 6.7 kPa in three patients at rest and in 13 during exercise. None developed symptoms, probably because of existing acclimatisation. Resting  $Pao_2$  >9.3 kPa or  $SpO_2$  >94% do not therefore exclude significant hypoxaemia at altitude in patients with severe COPD. Light exercise, equivalent to slow walking along the aisle of an aeroplane, may worsen hypoxaemia.

The risk of recurrent pneumothorax is discussed separately, but it should be noted here that COPD patients with large bullae are theoretically at increased risk of pneumothorax as a result of volume expansion at reduced cabin pressures. The volume of gas in a non-communicating bulla will increase by 30% on ascent from sea level to 2438 m (8000 ft). There is one case report of fatal air embolism in a patient with a giant

intrapulmonary bronchogenic cyst.<sup>46</sup> However, there are no data to state with any confidence what the maximum volume of a bulla should be before it reaches an unacceptable level of risk of rupture leading to tension pneumothorax, pneumomediastinum, or air embolism.

Recent UK guidelines on oxygen prescribing<sup>47</sup> quote evidence from two studies<sup>24–48</sup> which suggest that the best predictor of  $Pao_2$  at altitude is pre-flight  $Pao_2$  on the ground. In one study the authors measured  $Pao_2$  and  $Paco_2$  in 13 patients with COPD at 1650 m and 2250 m. No symptoms attributable to hypoxia were recorded although  $Pao_2$  fell from 9.1 kPa (68.2 mm Hg) at sea level to 6.6 kPa (51 mm Hg) at 1650 m and 6.0 kPa (44.7 mm Hg) at 2250 m.  $Pao_2$  on air at sea level measured some weeks before did not correlate with that measured at altitude, but  $Pao_2$  measured within 2 hours of flight time did. In the second study 18 retired servicemen with severe COPD were exposed to an altitude of 2438 m (8000 ft) in a hypobaric chamber. Mean  $Pao_2$  fell from 9.6 kPa to 6.3 kPa after 45 minutes at steady state. The authors describe a predictive equation and recommend using the patient's pre-flight  $FEV_1$  to limit variation in the  $Pao_2$  result at altitude.

In a review of acute responses of cardiopulmonary patients to altitude, Gong *et al*<sup>79</sup> recommend in-flight oxygen if the pre-flight  $Pao_2$  breathing 15% oxygen at sea level is <6.6 kPa. They conclude that equations do not accurately predict altitude  $Pao_2$  and favour the hypoxia altitude test.

A study of eight patients with mild to moderate COPD ( $FEV_1$  25–78% predicted) at sea level and after ascent to 1920 m (6298 ft) revealed no significant complications at altitude and 2,3-diphosphoglycerate levels remained unchanged.<sup>30</sup> This was despite levels of hypoxaemia similar to those observed in healthy mountaineers at altitudes of 4000–5000 m (13 000–16 000 ft). The authors suggest that pre-existing hypoxaemia resulting from disease may facilitate adaptation of patients to hypoxia and prevent symptoms of acute mountain sickness.

One study has examined the vasopressor responses to hypoxia in 18 men with severe COPD (mean (SD)  $FEV_1$  0.97 (0.32) l) at sea level, at 2438 m in a hypobaric chamber, and after oxygen supplementation at 2438 m.<sup>51</sup> Mean arterial pressure, systolic and diastolic blood pressure, and pulsus paradoxicus were unchanged at simulated altitude; oxygen reduced systolic blood pressure, pulsus paradoxicus, and pulse pressure. In one subject who developed increased cardiac ectopy, it was reduced by supplemental oxygen. The authors conclude that vasopressor responses to hypoxia do not increase the risk of flying in this group, but that in-flight oxygen may be beneficial.

In summary, the clinical significance of temporary altitude induced hypoxaemia in patients with COPD is unclear. The available controlled studies involve relatively small numbers of patients with stable disease and no co-existing medical problems. Simulated altitude exposure did not generally exceed 1 hour. These studies also largely excluded additional stressors such as exercise, dehydration, sleep, and active smoking. The only report to study exercise suggested that  $FEV_1$  <50% predicted is a risk factor for desaturation. We therefore recommend that patients with severe COPD are assessed before flying. Although there are no data to support this view, we also recommend that patients who require in-flight oxygen should receive oxygen when visiting high altitude destinations. Major high altitude destinations are listed in Appendix 4.

## Cystic fibrosis

There are few data on the risks of air travel to patients with cystic fibrosis. In 1994 a study of 22 children with cystic fibrosis aged 11–16 years examined the value of hypoxic challenge testing.<sup>52</sup> The children were assessed in the laboratory, in the Alps, and on commercial aircraft and all desaturated at altitude. Hypoxic challenge was found to be the best predictor



of hypoxia. However, a more recent study<sup>37</sup> of 87 children with cystic fibrosis aged 7–19 years who travelled on flights lasting 8–13 hours suggested that spirometric tests were a better predictor of desaturation. Low cabin humidity may increase the risk of acute bronchospasm and retention of secretions with possible lobar or segmental collapse, but there are no data to quantify this risk.

#### Diffuse parenchymal lung disease

There are no published data; clearly this is an area needing future research.

#### Infections

There is concern about the potential for transmission of infectious disease to other passengers on board commercial aircraft. There is also concern about the effect of travel after recent respiratory tract infections. The most important consideration is that of transmission of pulmonary tuberculosis, especially that of multiple drug resistant (MDR) tuberculosis.

Seven cases of possible transmission of *Mycobacterium tuberculosis* on aircraft have been reported to the Center for Disease Control and Prevention (CDC), Atlanta, Georgia, USA. The first concerned a flight attendant with documented tuberculin skin test (TST) conversion who did not receive prophylaxis and who developed pulmonary tuberculosis 3 years later.<sup>53</sup> The CDC concluded that the index case transmitted *M tuberculosis* to other flight crew members, but evidence of transmission to passengers was inconclusive. The second case concerned a passenger with pulmonary tuberculosis on a transatlantic flight.<sup>34</sup> Following a TST in 79 crew and passengers, eight had a positive TST. All had received Bacille Calmette-Guèrin (BCG) vaccine or had a history of past exposure to *M tuberculosis*. The CDC found no evidence of in-flight transmission of tuberculosis. The third report concerned a passenger with pulmonary tuberculosis who travelled from Mexico to San Francisco.<sup>55</sup> Ninety two passengers were on the flight. The TST was positive in 10 of the 22 who completed screening, nine of whom were born outside the US and the tenth was a 75 year old passenger who had lived overseas and was thought likely to have been exposed to tuberculosis previously. The San Francisco Department of Health found no conclusive evidence of *M tuberculosis* transmission during the flight.

In the fourth case a refugee from the former Soviet Union with pulmonary tuberculosis travelled on three separate flights from Germany to his final destination in the USA.<sup>56</sup> Of 219 passengers and flight crew, 142 completed screening. The TST was positive in 32, including five TST conversions. Twenty nine had received BCG vaccine or had lived in countries where tuberculosis is endemic. The five passengers with TST conversions were seated throughout the plane and none sat near the index case. None of the US born passengers had TST conversions. The investigation concluded that transmission could not be excluded but that the TST conversions probably represented previous exposure to tuberculosis.

The fifth report was of an immunosuppressed US citizen with pulmonary tuberculosis domiciled in Asia. He flew from Taiwan to Tokyo, then to Seattle, and subsequently to two further US destinations.<sup>35</sup> Of the 345 US residents on these flights, 25% completed screening. Fourteen had a positive TST, of whom nine were born in Asia. Of the remaining five, one had a positive TST before the flight, two had lived in a country with a high prevalence of tuberculosis, and two were aged over 75. The investigators concluded that transmission of tuberculosis could not be excluded but that the positive TST results may have resulted from prior *M tuberculosis* infection.

In the sixth report a passenger with pulmonary tuberculosis flew from Honolulu to Chicago and then to Baltimore where she stayed 1 month.<sup>37</sup> She then returned to Hawaii by the same route. Of 925 passengers resident in the US, 802

completed screening. Six passengers on the longer flight had TST conversions, four of whom were born in the USA and sat in the same section of the plane as the index case. The investigation considered that transmission of *M tuberculosis* had probably occurred.

In the final report a passenger with pulmonary and laryngeal tuberculosis flew from Canada to the US on three separate flights and returned 1 month later by the same route.<sup>58</sup> Five passengers had positive TST results but all had other possible explanations, and it was concluded that the likelihood of *M tuberculosis* transmission was low.

In all these reports the index patient was considered highly infectious and sputum specimens were heavily positive for acid fast bacilli. All were culture positive and had extensive pulmonary disease on chest radiography. Laryngeal tuberculosis is the most infectious form. In two instances the *M tuberculosis* strain isolated was resistant to at least isoniazid and rifampicin.<sup>54 57</sup> Despite the highly infectious nature of all seven index cases, only two reports yielded evidence of TST conversion.<sup>53 57</sup>

In the first case evidence of transmission was limited to crew members exposed to the index case for over 11 hours. In the second report transmission was demonstrated only in a few passengers seated in close proximity to the index case, and only on a flight lasting more than 8 hours. Although pulmonary tuberculosis does therefore appear to be transmissible during the course of air travel, none of the passengers with documented TST conversion have since developed active tuberculosis. The World Health Organisation (WHO) concludes that air travel does not carry a greater risk of infection with *M tuberculosis* than other situations in which contact with infectious individuals may occur, such as travelling by rail, bus, or attending conferences.<sup>59</sup>

There are other studies of potential transmission of airborne infectious diseases on aircraft. An influenza outbreak occurred in 1979 among passengers on a flight with a 3 hour ground delay before take off.<sup>60</sup> Seventy two percent of the 54 passengers developed symptoms; a similar virus was isolated from eight of 31 cultures, and 20 of 22 patients had serological evidence of infection with the same virus. The high attack rate was attributed to the ventilation system being switched off during the ground delay. Measles may be transmitted during international flights.<sup>61 62</sup> In a study of patients with recent lower respiratory tract infections, Richards reported that 23 patients travelling by air after acute respiratory infection suffered no adverse effects.<sup>63</sup> There are no other data specifically relating to patients travelling after infection, and there is no evidence that recirculation of air facilitates transmission of infectious agents on commercial aircraft.

#### Neuromuscular disease and kyphoscoliosis

The data in this area are sparse, but there is one case report of cor pulmonale developing in a patient with congenital kyphoscoliosis after intercontinental air travel.<sup>64</sup> The patient was a 59 year old man with apparently stable cardiorespiratory function who developed a first episode of pulmonary hypertension and right heart failure after a long haul flight. The authors conclude that this resulted from prolonged exposure to the low  $F_{iO_2}$  in the cabin. There are also anecdotal reports of oxygen dependent patients with scoliosis whose  $P_{aO_2}$  has fallen precipitously during hypoxic challenge, despite a baseline oxygen saturation above 94% (A K Simmonds, personal communication).

#### Obstructive sleep apnoea

Few data exist regarding the effects of air travel on patients with obstructive sleep apnoea. Toff<sup>65</sup> reported a morbidly obese woman who developed respiratory and cardiac failure at the end of a 2 week tour involving two flights and a stay at altitude.

It has been recognised since the 19th century that climbers to high altitude experience periodic breathing during

sleep.<sup>66–68</sup> Apnoeic periods arise with reductions in arterial oxygen saturation and are nearly universal above 2800 m. Although generally thought harmless, periodic breathing can cause insomnia. It has also been speculated that the desaturations may contribute to altitude sickness. Three studies have examined this phenomenon in greater detail<sup>69–71</sup> but all the subjects were healthy volunteers. The apnoeas are thought to be central in origin. However, in the light of these observations it would seem prudent to recommend that patients using CPAP should take their CPAP machine with them when visiting high altitude destinations above 2438 m (8000 ft). Major high altitude destinations are listed in Appendix 4.

### Previous pneumothorax

Thirty seven papers were reviewed. Airlines currently advise a 6 week interval between having a pneumothorax and travelling by air. The rationale for this recommendation is not explicit, but it is assumed that it reflects the time period during which a recurrence of a pneumothorax is most likely. In fact, the risk for a patient with a pneumothorax, if one were present, relates to ascent and descent, and a “new” pneumothorax occurring at altitude may be hazardous because of absence of medical care, but there should be no particular risk associated with pressure change. The “6 week rule” appears to have been arbitrarily applied with no account being taken of the type, if any, of underlying disease, or of any therapeutic intervention that has been undertaken, or of demographic factors.

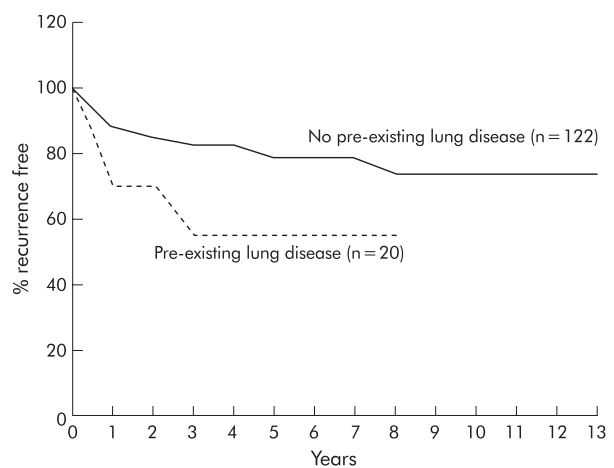
The literature was reviewed to examine whether better evidence could be found for the timing of maximum risk of a recurrence of pneumothorax and to determine whether different advice should be offered to different subgroups of patients. Two papers were found relating to therapeutic interventions which included evidence about recurrence rates, and the following conclusions regarding timing of the recurrence or differences between subgroups were drawn.

If the pneumothorax was treated by a thoracotomy and surgical pleurodesis or by insufflation of talc (at thoracotomy), the recurrence rate should be so low that no subsequent restriction on travel is necessary.<sup>72</sup> Talc pleurodesis performed via a thoracoscopy may not be as successful in preventing recurrence of a pneumothorax—a 93% success rate was reported in one study<sup>73</sup> and a 92% success rate in another.<sup>74</sup> Similarly, other interventions via a thoracoscopy, even when using the same techniques as performed by a more major thoracotomy, may not always carry the same certainty of success,<sup>72</sup> although some good reports with no recurrence of pneumothorax have been published.<sup>75</sup> Further studies are required.

Non-talc chemical pleurodeses (for example, with tetracycline) are associated with a more significant and continued risk of recurrence—16% in one study with 50% of the recurrences arising in 30 days<sup>76</sup> and 13% in another.<sup>74</sup> The best figure found was a 9% rate of recurrence after chemical pleurodesis.<sup>77</sup> These recurrence rates suggest that, even after such an intervention, the patient should still be subject to travel advice applied to others after a spontaneous pneumothorax.

For patients who have not had a definitive surgical pleurodesis via a thoracotomy, a risk of recurrence should therefore be expected. While many studies have included details of the percentage of patients suffering a recurrence, very few have given much detail of the timing of these recurrences after the first episode, and few have characterised those most at risk. In one study a 54.2% recurrence rate was recorded with the majority occurring within 1 year of the first pneumothorax,<sup>78</sup> and in another study 72% of the recurrences occurred within 2 years of the first episode.<sup>79</sup>

Cumulative freedom from recurrence data have been published by Lippert *et al*<sup>79</sup> and stratified according to smoking history and underlying lung disease over a follow up period of up to 13 years. The shape of the curve (fig 2) does indeed imply that the biggest risk of recurrence is in the first year. One



**Figure 2** Cumulative freedom from pneumothorax recurrence in relation to pre-existing lung disease (adapted with permission from Lippert *et al*<sup>79</sup>).

author has intimated that a further prospective trial he and colleagues are currently undertaking may provide a clearer month by month detail of recurrence rates.

At present the recommended 6 week cut off seems to be arbitrary, with a significant fall in risk only appearing to occur after 1 year has elapsed. Furthermore, current advice does not take into account those with a higher risk of recurrence such as smokers, those with pre-existing lung disease, taller men, and possibly women.<sup>79–80</sup> Thoracoscopic examination of the pleura does not permit any greater prediction of those at greatest risk of recurrence.<sup>79–81</sup>

In conclusion, a definitive surgical intervention makes the risk of recurrence of a pneumothorax negligible. Such patients may be able to fly 6 weeks after surgery and resolution of the pneumothorax in the absence of other contraindications. Careful medical assessment is required beforehand. For others the risk of a further pneumothorax is considerable for at least a year after the first episode. This risk is greatest for those with underlying lung disease and for continuing smokers.

While the likelihood of recurrence during flight is low and there is no evidence that air travel precipitates recurrence, the sequelae of recurrence at altitude may be significant. Recurrence of a pneumothorax while flying is likely to have more serious effects than a first episode, and recurrence in passengers with pre-existing lung disease is more likely to have serious consequences. Passengers may therefore choose to avoid this risk by delaying air travel for 1 year after a pneumothorax. This strategy should be given special consideration by those who smoke and/or have underlying lung disease.

### Venous thromboembolic disease (VTE)

Fourteen papers were reviewed but the evidence is conflicting with many questions unanswered. BTS guidelines on suspected pulmonary thromboembolism list six major risk factors for VTE.<sup>82</sup> Air travel is classified as one of several lesser risks. The evidence quoted in favour of an increased risk of air travel relates to long haul flights.<sup>83–84</sup> Such reports are supported by others dating back over 20 years,<sup>85–88</sup> and by more recent surveys.<sup>89–91</sup> It is not possible from the published data to quantify the risk, and the underlying mechanisms have not been elucidated. Hypotheses include immobility, seated position, dehydration, and alcohol ingestion. Owing to delayed onset of symptoms and rapid dispersal of patients after a flight, many current reports are likely to underestimate the size of the problem.

In small studies evidence suggests that co-morbidity may increase the risk of VTE associated with air travel.<sup>89–90</sup> Some

studies suggest that previous VTE increases the risk of air travel associated recurrence,<sup>89–93</sup> but the data are controversial. Further research is needed to determine whether delay in travel for those at risk is beneficial, and whether avoidance of alcohol and dehydration and upgrading reduce risk. Research is also required to examine the potential role of prophylactic low molecular weight heparin, full formal anticoagulation, and mechanical prophylactic methods including graded elastic compression hosiery and full leg pneumatic compression devices. The latter may be impractical on board an aeroplane and have not been studied in this context. However, they have been shown to have an additive effect in other at risk situations.<sup>94</sup> A recent study suggests that symptomless deep vein thrombosis may occur in up to 10% of airline passengers, and that wearing elastic compression stockings during long haul flights is associated with a reduced incidence.<sup>95</sup>

The role of aspirin in this setting also requires investigation. A study of 13 356 patients undergoing surgery for hip fracture and 4088 patients undergoing elective arthroplasty showed that aspirin reduces the risk of pulmonary embolism and deep vein thrombosis by at least one third throughout a period of increased risk.<sup>96</sup> The authors conclude that there is now good evidence for considering aspirin routinely in a wide range of groups at high risk of thromboembolism.

### Thoracic surgery

There are few data available, but it is clear that the volume of gas in air spaces will increase by 30% at a cabin altitude of 2438 m (8000 ft). Postoperative complications such as sepsis or volume depletion should have resolved before patients undergo air travel. Severe headache precipitated by airline travel has been recorded 7 days after a spinal anaesthetic, presumed to be due to cabin pressure changes inducing a dural leak.<sup>97</sup> North American guidelines<sup>13</sup> highlight the fact that postoperative patients are in a state of increased oxygen consumption due to surgical trauma, possible sepsis, and increased adrenergic drive. Oxygen delivery may be reduced or fixed in patients who are elderly, volume depleted, anaemic, or who have cardiopulmonary disease. Reduced use of transfusions means that postoperative patients are now often more anaemic than previously.

### Logistics of travel with oxygen

Berg *et al*<sup>98</sup> have investigated the effects of oxygen supplementation in a group of 18 patients with severe COPD (mean FEV<sub>1</sub> 31% predicted). Baseline Pao<sub>2</sub> at sea level was 9.47 kPa, which fell to 6.18 kPa when exposed to an altitude of 2438 m in a hypobaric chamber. The subjects were then given supplemental oxygen; 24% oxygen by Venturi mask increased Pao<sub>2</sub> to 8.02 kPa, 28% oxygen by Venturi mask increased Pao<sub>2</sub> to 8.55 kPa, and 4 l/min via nasal prongs increased Pao<sub>2</sub> to 10.79 kPa. This suggests that, in patients with COPD, 24% and 28% oxygen via Venturi masks (and probably 2 l/min via nasal prongs) will improve hypoxaemia at 2438 m but will not fully correct it to sea level values. However, oxygen given at 4 l/min via nasal prongs will overcorrect hypoxaemia to produce values above sea level baseline values.

In practical terms, aircraft oxygen delivery systems are usually limited to 2 or 4 l/min. This is probably best delivered by nasal prongs as the simple oxygen masks provided by many airlines may allow some re-breathing and worsen carbon dioxide retention in susceptible subjects. Using 100% oxygen at a rate of 4 l/min via nasal prongs from a cylinder will produce a Pao<sub>2</sub> at 2438 m (8000 ft) cabin altitude slightly higher than sea level Pao<sub>2</sub> on air. Using 2 l/min via nasal prongs should correct the fall in oxygenation. Patients who require LTOT are not excluded from air travel, but no randomised controlled trials exist on which to base recommendations on the optimal flow rate.

The method of oxygen delivery depends upon the specific aircraft, but the supply is usually from cylinders. In some air-

craft oxygen can also be tapped from the “ring main” of oxygen.<sup>99</sup> Patients are not allowed to use their own oxygen equipment on the aircraft but can take an empty oxygen cylinder or oxygen concentrator as baggage. Charges may be made for both services, as well as a charge for supplemental oxygen. Regulations vary with each airline, which can decline the patient's request to travel.<sup>100</sup> A comparative study of arranging in-flight oxygen on commercial air carriers was performed by members of the respiratory therapy department at the Cleveland Clinic Foundation in Cleveland, Ohio;<sup>101</sup> 76% of the 33 carriers contacted offered in-flight oxygen. There was significant variation in oxygen device and litre flow availability. Flow options varied from only two flow rates (36% of carriers) to a range of 1–15 l/min (one carrier). All carriers provided nasal cannulae, which was the only device available on 21 carriers. Charges varied considerably. Six carriers supplied oxygen free of charge while 18 carriers charged a fee ranging from \$64 to \$1500. Charges for an accompanying empty cylinder ranged from none to \$250. Most carriers required 48–72 hours advance notice; one required one month's notice.

### FUTURE DIRECTIONS

The justification for these recommendations is the significant number of in-flight medical incidents resulting from respiratory disease. The paucity of evidence on which to base them leads us to propose the following for patients with respiratory disease:

- a prospective study to establish the predictive value of spirometric tests, equations, hypoxic challenge, and walk tests in different disease groups;
- research to ascertain the effect of reduced humidity in the aircraft cabin;
- comparison of the effects of long haul and short haul flights;
- a prospective study to examine the risk of air travel for patients with diffuse parenchymal lung disease;
- a prospective study to examine the risk of staying at altitude for patients with obstructive sleep apnoea;
- a prospective study to clarify the benefit, if any, in delayed travel for those at risk where the risk will reduce with time—for example, after surgery or fracture.

In order to perform such studies it may be appropriate to establish a voluntary national reporting system to record in-flight respiratory incidents and collect airline data.

### APPENDIX 1: Reviewers

Dr A G Arnold, Consultant Respiratory Physician, Castle Hill Hospital, North Humberside; Mrs R Barnes, Chief Executive, Cystic Fibrosis Trust; Miss A Bradley, Chief Executive, National Asthma Campaign; British Thoracic Society Standards of Care Committee; Dr M Britton, Chairman, British Lung Foundation & Breathe Easy; Dr J Coakley, Chairman, Intensive Care Society; Dr C Davidson, Home Mechanical Ventilation Group UK; Dr R J O Davies, Chairman, BTS Working Party on Pleural Disease; Dr D J C Flower, Consultant Occupational Physician, British Airways; Dr S A Goodwin, Airport Medical Services, Horley, Surrey; Professor D Peira Gray, President, Royal College of General Practitioners; Dr B Higgins, Chairman, BTS Standards of Care Committee; Dr S Hill, ARTP, Queen Elizabeth Hospital, Birmingham; Dr D Holland, Consultant Anaesthetist, Southmead Hospital, Bristol, and Medical Director & Adviser to CEGA Air Ambulance Limited, Chichester, West Sussex; Professor G Pasvol, Professor in Infection & Tropical Medicine, Imperial College Faculty of Medicine and Honorary Consultant in Infectious Disease, Northwick Park Hospital; Professor D Price, GP Airways Group; Professor S G Spiro, Respiratory Medicine Group, Royal College of Physicians, London; Dr H Swanton, President, British Cardiac Society; Mr M Winter, Sunrise Medical, Reading, Berkshire.



**APPENDIX 2: Grading scheme for recommendations**

Criteria for grading of recommendations are based on a paper by Petrie *et al* published on behalf of the Scottish Intercollegiate Guidelines Network<sup>102</sup>

Level	Type of evidence (based on AHCPR <sup>103</sup> )
Ia	Evidence obtained from meta-analysis of randomised controlled trials
Ib	Evidence obtained from at least one randomised controlled trial
IIa	Evidence obtained from at least one well designed controlled study without randomisation
IIb	Evidence obtained from at least one other type of well designed quasi-experimental study
III	Evidence obtained from well designed non-experimental descriptive studies such as comparative studies, correlation studies and case controlled studies
IV	Evidence obtained from expert committee reports of opinions and/or clinical experience of respected authorities
Grade	Type of recommendations (based on AHCPR <sup>103</sup> )
A (levels Ia, Ib)	Requires at least one randomised controlled trial as part of the body of literature of overall good quality and consistency addressing the specific recommendation
B (levels IIa, IIb, III)	Requires availability of well conducted clinical studies but no randomised clinical trials on the topic of recommendation
C (level IV)	Requires evidence from expert committee reports or opinions and/or clinical experience of respected authorities. Indicates absence of directly applicable studies of good quality

**APPENDIX 3: National referral centres with decompression chambers**

- (1) RAF Centre for Aviation Medicine, RAF Henlow, Hitchin, Bedfordshire SG16 6DN. Tel 01462 851 515
- (2) Qinetiq Centre for Human Sciences, Building A50, Cody Technical Park, Farnborough, Hampshire GU14 OLX. Tel 01252 396 498 (general enquiries) or 01252 393 937 (decompression chamber)
- (3) HMS Sultan, Military Road, Gosport, Hampshire PO12 3BY. Tel 02392 542 934

**APPENDIX 4: Major destinations exceeding 2438 m (8000 ft)**

This is not an exhaustive list and passengers are recommended to contact the carrier if they suspect their destination may be at high altitude:

Bangda, Tibet: 15 548 ft  
 Bengdag, China: 14 100 ft  
 Bogota, Colombia: 8355 ft  
 La Paz, Bolivia: 13 310 ft  
 Lhasa, Tibet: 14 315 ft  
 Quito, Ecuador: 9222 ft  
 Telluride, USA: 9086 ft

**APPENDIX 5: Sample MEDIF form (see pages 301 and 302)****APPENDIX 6: Conversion chart from feet to metres**

Conversion chart from feet to metres

Feet	Metres	Feet	Metres
1000	305	26000	7925
2000	610	27000	8230
3000	914	28000	8534
4000	1219	29000	8839
5000	1525	30000	9144
6000	1829	31000	9449
7000	2134	32000	9754
8000	2438	33000	10058
9000	2743	34000	10363
10000	3048	35000	10668
11000	3353	36000	10973
12000	3658	37000	11278
13000	3962	38000	11582
14000	4267	39000	11887
15000	4572	40000	12192
16000	4879	41000	12497
17000	5182	42000	12802
18000	5486	43000	13107
19000	5791	44000	13411
20000	6096	45000	13716
21000	6401	46000	14021
22000	6706	47000	14326
23000	7010	48000	14630
24000	7315	49000	14935
25000	7620	50000	15240

**APPENDIX 7: Conversion algorithms for saturations to kPa and mm Hg**

Conversion algorithm: saturations to kPa and mm Hg

SaO <sub>2</sub> (%)	Pao <sub>2</sub> (kPa)	Pao <sub>2</sub> (mm Hg)
97	12.7–14.0	95–105
94	9.3–10.0	70–75
92	8.9–9.7	67–73
90	7.7–8.3	58–62
87	6.9–7.7	52–58
84	6.1–6.9	46–52
Guideline threshold for advising in-flight oxygen:		
82–84	<6.6	<50

**APPENDIX 8: Examples of equations for predicting hypoxaemia**

- (1) This relates Pao<sub>2</sub> at altitude (Alt) to Pao<sub>2</sub> at sea level (Ground)<sup>26</sup>:  

$$Pao_2 \text{ Alt (mm Hg)} = 0.410 \times Pao_2 \text{ Ground (mm Hg)} + 17.652$$
- (2) This relates Pao<sub>2</sub> Alt to Pao<sub>2</sub> Ground and includes FEV<sub>1</sub> in litres<sup>26</sup>:  

$$Pao_2 \text{ Alt} = 0.519 \times Pao_2 \text{ Ground (mm Hg)} + 11.855 \times FEV_1 \text{ (litres)} - 1.760$$
- (3) This relates Pao<sub>2</sub> Alt to Pao<sub>2</sub> Ground and includes FEV<sub>1</sub> as % predicted<sup>26</sup>:  


$$Pao_2 \text{ Alt} = 0.453 \times Pao_2 \text{ Ground (mm Hg)} + 0.386 \times (FEV_1 \% \text{ pred}) + 2.44$$
- (4) This relates Pao<sub>2</sub> Alt to Pao<sub>2</sub> Ground and includes flight or destination altitude<sup>27</sup>:  

$$Pao_2 \text{ Alt} = 22.8 - (2.74 \times \text{altitude in thousands of feet}) + 0.68 \times Pao_2 \text{ Ground (mm Hg)}$$

Notes:

- (a) Thousands of feet should be entered as feet divided by 1000; 8000 feet would thus be entered in the equation as 8.0 not as 8000.
- (b) All these papers use mm Hg; 1 kPa = 7.5 mm Hg.




	<b>INCAPACITATED PASSENGERS HANDLING ADVICE</b> <b>INCAD HANDLING INFORMATION</b>	<b>Part 1</b>  To be completed by Sales Office/Agent												
Answer all questions. Put a cross (X) in 'Yes' or 'No' boxes. Use block letters or typewriter when completing this form														
<b>A</b>	Name/Initials/Title													
<b>B</b>	Proposed itinerary (airline(s), flight number(s), class(es), date(s), segment(s), reservation status of continuous air journey)	Transfer from one flight to another often requires longer connecting time												
<b>C</b>	Nature of incapacitation	Medical clearance required? No <input type="checkbox"/> Yes <input type="checkbox"/>												
<b>D</b>	Is stretcher needed on board? (all stretcher cases must be escorted) No <input type="checkbox"/> Yes <input type="checkbox"/>	Request rate if unknown												
<b>E</b>	Intended escort (Name, sex, age, professional qualification, segments, if different from passenger). If untrained, state 'Travel companion'	For blind and/or deaf state if escorted by trained dog												
<b>F</b>	Wheelchair needed? No <input type="checkbox"/> Yes <input type="checkbox"/> Wheelchair category <input type="text"/> Categories are WCHR - can climb steps/walk cabin WCHS - unable steps/can walk cabin WCHC - immobile	<table border="1" style="font-size: x-small; border-collapse: collapse;"> <tr> <td>Own wheelchair?</td> <td>Collapsible?</td> <td>Power Driven?</td> <td>Battery type (spillable)?</td> </tr> <tr> <td>No <input type="checkbox"/></td> <td>No <input type="checkbox"/></td> <td>No <input type="checkbox"/></td> <td>No <input type="checkbox"/></td> </tr> <tr> <td>Yes <input type="checkbox"/></td> <td>Yes <input type="checkbox"/></td> <td>Yes <input type="checkbox"/></td> <td>Yes <input type="checkbox"/></td> </tr> </table> Wheelchairs with spillable batteries are 'restricted articles'	Own wheelchair?	Collapsible?	Power Driven?	Battery type (spillable)?	No <input type="checkbox"/>	No <input type="checkbox"/>	No <input type="checkbox"/>	No <input type="checkbox"/>	Yes <input type="checkbox"/>	Yes <input type="checkbox"/>	Yes <input type="checkbox"/>	Yes <input type="checkbox"/>
Own wheelchair?	Collapsible?	Power Driven?	Battery type (spillable)?											
No <input type="checkbox"/>	No <input type="checkbox"/>	No <input type="checkbox"/>	No <input type="checkbox"/>											
Yes <input type="checkbox"/>	Yes <input type="checkbox"/>	Yes <input type="checkbox"/>	Yes <input type="checkbox"/>											
<b>G</b>	Ambulance needed? No <input type="checkbox"/> Yes <input type="checkbox"/> To be arranged by airline No <input type="checkbox"/> specify Ambul Company contact <input type="text"/> Yes <input type="checkbox"/> specify destination address <input type="text"/>	Request rate(s) if unknown												
<b>H</b>	Other ground arrangements needed? No <input type="checkbox"/> Yes <input type="checkbox"/> If yes, specify below and indicate for each item, (a) the arranging airline or other organisation, (b) at whose expense, and (c) contact addresses/phones where appropriate, or whenever specific persons are designated to meet/assist the passenger.													
	1 Arrangements for delivery at airport of departure No <input type="checkbox"/> Yes <input type="checkbox"/> specify <input type="text"/> 2 Arrangements for assistance at connecting points No <input type="checkbox"/> Yes <input type="checkbox"/> specify <input type="text"/> 3 Arrangements for meeting at airport of arrival No <input type="checkbox"/> Yes <input type="checkbox"/> specify <input type="text"/> 4 Other requirements or relevant information No <input type="checkbox"/> Yes <input type="checkbox"/> specify <input type="text"/>													
<b>K</b>	Special in-flight arrangements needed, such as: special meals, special seating, leg rest, extra seat(s), special equipment etc. No <input type="checkbox"/> Yes <input type="checkbox"/> If yes, describe and indicate for each item, (a) segment(s) on which required, (b) airline arranged or arranging third party, and (c) at whose expense. Provision of special equipment such as oxygen etc. always requires completion of Part 2 overleaf. (See 'Note(*)' at the end of Part 2 overleaf)													
<b>L</b>	Does passenger hold a 'Frequent traveller's medical card' valid for this trip? (FREMEC) No <input type="checkbox"/> Yes <input type="checkbox"/> If yes, add below FREMEC data to your reservation requests. If no, (or additional data needed by carrying airline(s)), have physician in attendance complete Part 2 overleaf.													
	FREMEC <input type="text"/> <input type="text"/> <input type="text"/> <input type="text"/> <input type="text"/> <input type="text"/> (FREMEC Nr) (issued by) (valid until) (sex) (age) (incapacitation) (Incapacit. contd.) (Limitations)													
<b>Passenger's declaration</b>  I hereby authorize _____ (name of nominated physician)  to complete Part 2 for the purpose as indicated overleaf and in consideration there of I hereby relieve that physician of his/her professional duty of confidentiality in respect of such information, and agree to meet such physician's fees in connection therewith.														
Date:	Passenger's signature or Agent													

Thorax: first published as 10.1136/thorax-57.4.289 on 1 April 2002. Downloaded from <http://thorax.bmj.com/> on June 8, 2023 by guest. Protected by copyright.

## Part 2 MEDIF Medical information sheet

CONFIDENTIAL

Return this form to: British Airways plc Passenger Medical Clearance Unit Health Services (HMAG) Waterside P.O. Box 365 Harmondsworth UB7 OGB Carriers designated office		This form is intended to provide confidential information to enable the airlines' medical departments to provide for the passenger's special needs. To be completed by attending physician <ul style="list-style-type: none"> <li>when fitness to travel is in doubt as evidenced by recent illness, hospitalisation, injury, surgery or instability</li> <li>where special services are required, i.e. oxygen, stretcher, authority to carry accompanying medical equipment.</li> </ul> Completion of the form in block letters or by typewriter will be appreciated.		British Airways Health Service  Telephone: 0208 738 5444 24 Hours Fax: 0208 738 9644 Airline message address LHRKHBA	
Airlines' ref code MEDA01	Patient's name, initial(s), sex				Age
MEDA02	Attending physician Name and address				
	Telephone contact	Business:	Home:		
MEDA03	Medical data: Diagnosis in details (including vital signs)				
	Day/month/year of first symptoms:		Date of diagnosis/injury	Date of operation	
MEDA04	Prognosis for the flight:				
MEDA05	Contagious and communicable disease?	No <input type="checkbox"/>	Yes <input type="checkbox"/>	Specify	
MEDA06	Would the physical and/or mental condition of the patient be likely to cause distress or discomfort to other passengers?	No <input type="checkbox"/>	Yes <input type="checkbox"/>	Specify	
MEDA07	Can patient use normal aircraft seat with seatback placed in the upright position when so required?	Yes <input type="checkbox"/>		No <input type="checkbox"/>	
MEDA08	Can patient take care of his own needs on board unassisted* (including meals, visit to toilet, etc.)?	Yes <input type="checkbox"/>		No <input type="checkbox"/>	
		If not, type of help needed			
MEDA09	If to be escorted, is the arrangement proposed in Part 1/E overleaf satisfactory for you?	Yes <input type="checkbox"/>		No <input type="checkbox"/>	
		If not, type of escort proposed by you			
MEDA10	Does patient need supplementary oxygen** equipment in flight? (if yes, state rate of flow, 2 or 4 l/min). Guidance: supplementary oxygen is not generally required unless dyspnoeic after walking 50 metres. (Charge £100 per journey)	Yes <input type="checkbox"/>	No <input type="checkbox"/>	Litres per minute <input type="text"/>	Continuous <input type="checkbox"/> Intermittent <input type="checkbox"/>
MEDA11	Does patient need any medication*, other than self-administered, and/or the use of special apparatus such as respirator, incubator etc.**	(a) on the ground while at the airport(s)			
		No <input type="checkbox"/>	Yes <input type="checkbox"/>	Specify	
MEDA12		(b) on board the aircraft			
		No <input type="checkbox"/>	Yes <input type="checkbox"/>	Specify	
MEDA13	Does patient need hospitalisation? (If yes, indicate arrangements made or, if none were made indicate 'No action taken')	(a) during long layover or nightstop at connecting points en route			
		No <input type="checkbox"/>	Yes <input type="checkbox"/>	Action	
MEDA14		(b) upon arrival at destination			
		No <input type="checkbox"/>	Yes <input type="checkbox"/>	Action	
MEDA15	Other remarks or information in the interest of your patient's smooth and comfortable transportation:	None <input type="checkbox"/>	Specify if any**		
MEDA16	Other arrangements made by the attending physician				
Note (*): Cabin attendants are not authorized to give special assistance to particular passengers, to the detriment of their service to other passengers. Additionally, they are trained only in first aid and are not permitted to administer any injection, or to give medication.		Important: Fees if any, relevant to the provision of the above information and for carrier - provided special equipment (**) are to be paid by the passenger concerned.			
Date:	Place:	Attending Physician's signature			

## REFERENCES

- 1 **Iglesias R**, Cortes MDCG, Almanza C. Facing air passengers' medical problems while on board. *Aerospace Med* 1974;**45**:204–6.
- 2 <http://www.mediterranean.com>. February 2001.
- 3 **Coker RK**, Partridge MR. Assessing the risk for hypoxia in flight: the need for more rational guidelines. *Eur Respir J* 2000;**15**:128–30.
- 4 **COPD Guidelines Group of the Standards of Care Committee of the British Thoracic Society**. BTS guidelines for the management of chronic obstructive pulmonary disease. *Thorax* 1997;**52**(Suppl 5):S1–28.
- 5 **Siafakas NM**, Vermeire P, Pride NB, *et al*. Optimal assessment and management of chronic obstructive pulmonary disease (COPD). *Eur Respir J* 1995;**8**:1398–420.
- 6 **Royal College of Physicians**. *Domiciliary oxygen prescribing services. Clinical guidelines and advice for prescribers*. London: Royal College of Physicians, 1999.
- 7 **American Thoracic Society**. ATS statement: standards for the diagnosis and care of patients with chronic obstructive pulmonary disease. *Am J Respir Crit Care Med* 1995;**152**: S77–120.
- 8 **Lien D**, Turner MD. Recommendations for patients with chronic respiratory disease considering air travel: a statement from the Canadian Thoracic Society. *Can Respir J* 1998;**5**:95–100.
- 9 **Ernsting J**, Nicholson AN, Rainford DJ. *Aviation medicine*. 3rd ed. Oxford: Butterworth Heinmann, 1999.
- 10 **Aerospace Medical Association**. Medical guidelines for air travel. *Aviat Space Environ Med* 1996;**67**(10 Suppl): B1–16.
- 11 **Aerospace Medical Association**. Medical oxygen and air travel. *Aviat Space Environ Med* 2000;**71**:827–31.
- 12 **Aerospace Medical Association**. Inflight medical emergencies. *Aviat Space Environ Med* 2000;**71**:832–8.
- 13 **Air Transport Medicine Committee**, Aerospace Medical Association. *Medical guidelines for airline travel*. Virginia: Aerospace Medical Association, 1997.
- 14 **World Health Organisation**. *TB and air travel: guidelines for prevention and control*. Geneva: WHO, 1998.
- 15 **Joint Tuberculosis Committee of the British Thoracic Society**. Control and prevention of tuberculosis in the United Kingdom: Code of Practice 2000. *Thorax* 2000;**55**:887–901.
- 16 **Code of Federal Regulations**. Title 14, part 25.841. Washington: US Government Printing Office, 1986.
- 17 **Cottrell JJ**. Altitude exposures during aircraft flight. *Chest* 1988;**92**:81–4.
- 18 **Air Navigation Order**. Schedule K, 1995.
- 19 **Liebman J**, Lucas R, Moss A, *et al*. Airline travel for children with chronic pulmonary disease. *Pediatrics* 1976;**57**:408–10.
- 20 **Nunn JF**. *Applied respiratory physiology*. 3rd ed. London: Butterworths, 1987: 312.
- 21 **Butland RJ**, Pang J, Gross ER, *et al*. Two, six, and 12 minute walking tests in respiratory disease. *BMJ Clin Res Ed* 1982;**284**:1607–8.
- 22 **McGavin CR**, Gupta SP, McHardy GJ. Twelve minute walking test for assessing disability in chronic bronchitis. *BMJ* 1976;**1**: 822–3.
- 23 **Revill SM**, Morgan MD, Singh SJ, *et al*. The endurance shuttle walk: a new field test for the assessment of endurance capacity in chronic obstructive pulmonary disease. *Thorax* 1999;**54**:213–22.
- 24 **Apte NM**, Karnad DR. Altitude hypoxaemia and the arterial-to-alveolar oxygen ratio. *Ann Intern Med* 1990;**112**:547–8.
- 25 **Dillard TA**, Rosenberg AP, Berg BW. Hypoxaemia during altitude exposure. A meta-analysis of chronic obstructive pulmonary disease. *Chest* 1993;**103**:422–5.
- 26 **Dillard TA**, Berg BW, Rajagopal KR, *et al*. Hypoxaemia during air travel in patients with COPD. *Ann Intern Med* 1989;**111**:362–7.
- 27 **Gong H**, Tashkin DP, Lee EY, *et al*. Hypoxia-altitude simulation test. *Am Rev Respir Dis* 1984;**130**:980–6.
- 28 **Henry JN**, Krenis LJ, Cutting RT. Hypoxaemia during aeromedical evacuation. *Surg Gynecol Obstet* 1973;**136**:49–53.
- 29 **Dillard TA**, Moores LK, Billelo KL, *et al*. The preflight evaluation. A comparison of the hypoxia inhalation test with hypobaric exposure. *Chest* 1995;**107**:352–7.
- 30 **Cramer D**, Ward S, Geddes D. Assessment of oxygen supplementation during air travel. *Thorax* 1996;**51**:202–3.
- 31 **Vohra KP**, Klocke RA. Detection and correction of hypoxemia associated with air travel. *Am Rev Respir Dis* 1993;**148**:1215–9.
- 32 **Lanteri CJ**, Sly PD. Changes in respiratory mechanics with age. *J Appl Physiol* 1993;**74**:369–78.
- 33 **Greenough A**. Neonatal pulmonary physiology. In: Rennie JM, Robertson NRC, eds. *Textbook of neonatology*. 3rd ed. Edinburgh: Churchill Livingstone, 1999: 455–81.
- 34 **Letsky EA**. Anaemia in the newborn. In: Rennie JM, Robertson NRC, eds. *Textbook of neonatology*. 3rd ed. Edinburgh: Churchill Livingstone, 1999: 806–33.
- 35 **Church NR**, Anas NG, Hall CB, *et al*. Respiratory syncytial virus-related apnea in infants. Demographics and outcome. *Am J Dis Child* 1984;**138**:247–50.
- 36 **Bruhn FW**, Makrochisky ST, McIntosh K. Apnea associated with respiratory syncytial virus infection in young infants. *J Pediatr* 1977;**3**:382–6.
- 37 **Buchdahl RM**, Babiker A, Bush A, *et al*. Predicting hypoxaemia during flights in children with cystic fibrosis. *Thorax* 2001;**56**:877–9.
- 38 **Donaldson E**, Pearn J. First aid in the air. *Aust NZ J Surg* 1996;**66**:431–4.
- 39 **Cottrell JJ**, Callaghan JT, Kohn GM, *et al*. In-flight medical emergencies. One year of experience with the enhanced medical kit. *JAMA* 1989;**262**:1653–6.
- 40 **Poundstone W**. Air travel and supplementary oxygen: friendly skies for respiratory patients? *Respir Ther* 1983;**13**:79–82.
- 41 **Cates CJ**. Holding chambers versus nebulisers for beta agonist treatment of acute asthma. (Cochrane Review). In: *Cochrane Library*. Issue 3. Oxford: Update Software, 1999.
- 42 **Bonnet D**, Marotel C, Miltgen J, *et al*. Travel and chronic respiratory insufficiency. *Médecine Tropicale* 1997;**57**:465–7.
- 43 **Harinck E**, Hutter PA, Hoortnietje TM, *et al*. Air travel and adults with cyanotic congenital heart disease. *Circulation* 1996;**93**:272–6.
- 44 **Dillard TA**, Beninati WA, Berg BW. Air travel in patients with chronic obstructive airways disease. *Arch Intern Med* 1991;**151**:1793–5.
- 45 **Christensen CC**, Ryg M, Refvem OK, *et al*. Development of severe hypoxaemia in chronic obstructive pulmonary disease patients at 2438 m (8000 ft) altitude. *Eur Respir J* 2000;**15**:635–9.
- 46 **Zaugg M**, Kaplan V, Widemer U, *et al*. Fatal air embolism in an airplane passenger with a giant intrapulmonary bronchogenic cyst. *Am J Respir Crit Care Med* 1998;**157**:1686–9.
- 47 **Domiciliary Oxygen Prescribing Services**. *Clinical guidelines and advice for prescribers*. London: Royal College of Physicians, 1999.
- 48 **Schwartz JS**, Bencowitz HZ, Moser KM. Air travel hypoxaemia with chronic obstructive pulmonary disease. *Ann Intern Med* 1984;**100**:473–7.
- 49 **Gong H Jr**. Air travel and oxygen therapy in cardiopulmonary patients. *Chest* 1992;**101**:1104–13.
- 50 **Graham WGB**, Houston CS. Short-term adaptation to moderate altitude. Patients with chronic obstructive pulmonary disease. *JAMA* 1978;**240**:1491–4.
- 51 **Berg BW**, Dillard TA, Derderian SS, *et al*. Haemodynamic effects of altitude exposure and oxygen administration in chronic obstructive pulmonary disease. *Am J Med* 1993;**94**:407–12.
- 52 **Oades PJ**, Buchdahl RM, Bush A. Prediction of hypoxaemia at high altitude in children with cystic fibrosis. *BMJ* 1994;**308**:15–18.
- 53 **Driver CR**, Valway SE, Morgan WM, *et al*. Transmission of Mycobacterium tuberculosis associated with air travel. *JAMA* 1994;**272**:1031–5.
- 54 **McFarland JW**, Hickman C, Osterholm MT, *et al*. Exposure to Mycobacterium tuberculosis during air travel. *Lancet* 1993;**342**:112–3.
- 55 **Center for Disease Control and Prevention (CDC)**. Exposure of passengers and flight crew to Mycobacterium tuberculosis on commercial aircraft, 1992–1995. *MMWR* 1995;**44**:137–40.
- 56 **Miller MA**, Valway S, Onorato IM. Tuberculosis risk after exposure on airplanes. *Tuberc Lung Dis* 1996;**77**:414–9.
- 57 **Kenyon TA**, Valway SE, Ihle WW, *et al*. Transmission of multidrug-resistant Mycobacterium tuberculosis during a long airplane flight. *N Engl J Med* 1996;**334**:933–8.
- 58 **Moore M**, Fleming KS, Sands L. A passenger with pulmonary/laryngeal tuberculosis: no evidence of transmission on two short flights. *Aviat Space Environ Med* 1996;**67**:1097–100.
- 59 **World Health Organisation**. *Tuberculosis and air travel: guidelines for prevention and control*. Report WHO/TB/98.256. Geneva: WHO, 1998.
- 60 **Moser MR**, Bender TR, Margolis HS, *et al*. An outbreak of influenza aboard a commercial airliner. *Am J Epidemiol* 1979;**110**:1–6.
- 61 **Amler RW**, Bloch AB, Orenstein WA, *et al*. Imported measles in the United States. *JAMA* 1982;**248**:2129–33.
- 62 **CDC**. Epidemiological notes and reports. Interstate importation of measles following transmission in an airport, California, Washington 1982. *MMWR* 1983;**32**:210–6.
- 63 **Richards PR**. The effects of air travel on passengers with cardiovascular and respiratory diseases. *Practitioner* 1973;**210**:2320–41.
- 64 **Noble JS**, Davidson JA. Cor pulmonale presenting in a patient with congenital kyphoscoliosis following intercontinental air travel. *Anaesthesia* 1999;**54**:361–3.
- 65 **Toff NJ**. Hazards of air travel for the obese. Miss Pickwick and the Boeing 747. *J R Coll Physicians Lond* 1993;**27**:375–6.
- 66 **Reite M**, Jackson D, Cahoon RL, *et al*. Sleep physiology at high altitude. *Electroenceph Clin Neurophysiol* 1975;**38**:463–71.
- 67 **Weil JV**, Kryger MH, Scoggin CH. Sleep and breathing at high altitude. In: Guilleminault C, Dement WC, eds. *Sleep apnea syndromes*. New York: Alan R Liss, 1978: 119–36.
- 68 **Powles ACP**, Sutton JR. Sleep at altitude. In: *Seminars in respiratory medicine. Man at altitude*. Volume 5. New York: Thieme-Stratton, 1983: 175–80.
- 69 **Hackett PH**, Roach RC, Harrison GL, *et al*. Respiratory stimulants and sleep periodic breathing at high altitude. *Am Rev Respir Dis* 1987;**135**:896–8.
- 70 **Nicholson AN**, Smith PA, Stone BM, *et al*. Altitude insomnia: studies during an expedition to the Himalayas. *Sleep* 1988;**11**:354–61.
- 71 **Normand H**, Barragan M, Benoit O, *et al*. Period breathing and O<sub>2</sub> saturation in relation to sleep stages at high altitude. *Aviat Space Environ Med* 1990;**61**:229–35.
- 72 **Massard G**, Thomas P, Wihlm JM. Minimally invasive management for first and recurrent pneumothorax. *Ann Thorac Surg* 1998;**66**:592–9.
- 73 **DeLauois L**, el Khawand C. Medical thoracoscopy in the management of pneumothorax. *Monaldi Arch Chest Dis* 1998;**53**:148–50.
- 74 **Almind M**, Lange P, Viskum K. Spontaneous pneumothorax: comparison of simple drainage, talc pleurodesis and tetracycline pleurodesis. *Thorax* 1989;**44**:627–30.
- 75 **Liu HP**, Lin PG, Hsieh MG, *et al*. Thoracoscopic surgery as a routine procedure for spontaneous pneumothorax. Results from 82 patients. *Chest* 1995;**107**:559–62.
- 76 **Olsen PS**, Andersen HO. Long term results after tetracycline pleurodesis in spontaneous pneumothorax. *Ann Thorac Surg* 1992;**53**:1015–7.

- 77 **Alfageme I**, Moreno L, Huertas C, *et al.* Spontaneous pneumothorax. Long term results with tetracycline pleurodesis. *Chest* 1994;**106**:347–50.
- 78 **Sadikot RT**, Greene T, Meadows K, *et al.* Recurrence of primary spontaneous pneumothorax. *Thorax* 1997;**52**:805–9.
- 79 **Lippert HL**, Lund O, Blegvade S, *et al.* Independent risk factors for cumulative recurrence rate after first spontaneous pneumothorax. *Eur Respir J* 1991;**4**:324–31.
- 80 **Athanassiadi K**, Kalavrouziotis G, Loutsidis A, *et al.* Surgical treatment of spontaneous pneumothorax: 10 year experience. *World J Surg* 1998;**22**:803–6.
- 81 **Janssen JP**, Schramel FM, Sutedja TJ, *et al.* Video thorascopic appearance of first and recurrent pneumothorax. *Chest* 1995;**108**:330–4.
- 82 **British Thoracic Society Standards of Care Committee.** Suspected acute pulmonary embolism: a practical approach. *Thorax* 1997;**52**(suppl 4):S1–4.
- 83 **Cruickshank JM**, Gorlin R, Jennett B. Air travel and thrombotic episodes: the economy class syndrome. *Lancet* 1988;ii: 497–8.
- 84 **Paganin F**, Laurent Y, Gauzers BA, *et al.* Pulmonary embolism on non-stop flights between France and Reunion Island. *Lancet* 1996;**347**:1195–6.
- 85 **Symington IS**, Stack BHR. Pulmonary thromboembolism after travel. *Br J Dis Chest* 1997;**71**:138–40.
- 86 **Ledermann JA**, Keshavarzian A. Acute pulmonary embolism following air travel. *Postgrad Med J* 1983;**59**:104–5.
- 87 **Sahiar F**, Mohler SR. Economy class syndrome. *Aviat Space Environ Med* 1994;**65**:957–60.
- 88 **Milne R.** Venous thromboembolism and travel: is there an association? *J R Coll Physicians Lond* 1992;**26**:47–9.
- 89 **Mercer A**, Brown JD. Venous thromboembolism associated with air travel. A report of 33 patients. *Aviat Space Environ Med* 1998;**69**:154–7.
- 90 **Ferrari E**, Chevalier T, Chapelier A, *et al.* Travel as a risk factor for venous thromboembolic disease: a case control study. *Chest* 1999;**115**:440–4.
- 91 **House of Lords Select Committee on Science and Technology.** Deep vein thrombosis, seating and stress. In: *Air travel and health*. Report of House of Lords Select Committee on Science and Technology, 2000: 44–50.
- 92 **Forbes CD**, Johnston RV. Venous and arterial thrombosis in airline passengers. *J R Soc Med* 1998;**91**:565–6.
- 93 **Eklöf B**, Kistner RL, Masuda EM, *et al.* Venous thromboembolism in association with prolonged air travel. *Dermatol Surg* 1996;**22**:637–41.
- 94 **Hyers TM.** Venous thromboembolism. *Am J Respir Crit Care Med* 1999;**159**:1–14.
- 95 **Scurr JH**, Machin SJ, Bailey-King S, *et al.* Frequency and prevention of symptomless deep-vein thrombosis in long haul flights: a randomised trial. *Lancet* 2001;**357**:1485–9.
- 96 **Pulmonary Embolism Prevention (PEP) Trial Collaborative Group.** Prevention of pulmonary embolism and deep vein thrombosis with low dose aspirin: pulmonary prevention (PEP) trial. *Lancet* 2000;**355**:1295–302.
- 97 **Vacanti JJ.** Post-spinal headache and air travel. *Anaesthesiology* 1972;**37**:358–9.
- 98 **Berg BW**, Dillard TA, Rajagopal KR, *et al.* Oxygen supplementation during air travel in patients with chronic obstructive lung disease. *Chest* 1992;**101**:638–41.
- 99 **Byrne NJ.** Comparison of airline oxygen systems. *Aviat Space Environ Med* 1995;**66**:780–3.
- 100 **Smeets F.** Travel for technology dependent patients with respiratory disease. *Thorax* 1994;**49**:77–81.
- 101 **Stoller JK**, Hoisington E, Auger G. A comparative analysis of arranging in-flight oxygen aboard commercial air carriers. *Chest* 1999;**115**:991–5.
- 102 **Petrie GJ**, Barnwell E, Grimshaw J, on behalf of the Scottish Intercollegiate Guidelines Network. *Clinical guidelines: criteria for appraisal for national use*. Edinburgh: Royal College of Physicians, 1995.
- 103 **Agency for Health Care Policy and Research (AHCPR).** *Clinical practice guideline 92-0032*. Rockville, Maryland: Agency for Healthcare Policy and Research Publications, 1992.



# Managing passengers with respiratory disease planning air travel: British Thoracic Society recommendations

## Summary for primary care

British Thoracic Society Standards of Care Committee

*Thorax* 2002;**57**:1–2

Over one billion people are estimated to undertake air travel each year. For the vast majority commercial flights are safe, but an increasing proportion are at risk of respiratory complications triggered by hypoxaemia, immobility, and dehydration. The risk of hypoxaemia is partially limited by cabin pressurisation to 2438 m (8000 ft), but is still equivalent to breathing 15.1% oxygen at sea level.

Patients with severe asthma, severe COPD, fibrosing alveolitis, cystic fibrosis, neuromuscular disease and kyphoscoliosis, those recently hospitalised for acute respiratory illness (<6 weeks), a history of air travel intolerance with respiratory symptoms (dyspnoea, chest pain, confusion or syncope), or a co-morbid condition worsened by hypoxaemia (cerebrovascular disease, coronary artery disease, heart failure) require assessment before flying.

### GENERAL RECOMMENDATIONS

- Preventative and relieving inhalers should be carried in hand luggage.
- Nebulisers may be used at airline's discretion, but spacers are as effective.
- Many airports can provide wheelchairs for transport to and from the aircraft.
- Individuals not receiving oxygen should remain mobile during the flight.
- The most compromised should use oxygen at all times when travelling including in airports.

### Recommended assessment

- Cardiorespiratory history, examination, and record of previous flying experience.
- Spirometric tests (in non-tuberculous patients only).
- Oximetry; if SpO<sub>2</sub> <95% recommend further testing which may include:
  - ability to walk 50 metres without distress (a traditional but not complete guarantee);
  - regression equations predicting PaO<sub>2</sub> or SpO<sub>2</sub> from sea level measurements;
  - hypoxic challenge test simulates cabin conditions using 15% oxygen.

### SPECIFIC RECOMMENDATIONS

Specific recommendations for the following groups of patients:

#### COPD

- Patients requiring in-flight oxygen should also receive it at high altitude destinations.

#### Cystic fibrosis

- Assessment by the CF physician is recommended.
- Medications to be divided between hand and hold baggage to allow for delays.
- In-flight nebulised antibiotics and DNase should not be required.
- Check with pharmacist whether medicines affected by temperatures in the hold.

#### Infections

- Infectious tuberculosis patients must not use public air transport until non-infectious.

#### Oxygen and ventilator dependent and obstructive sleep apnoea patients

All patients

- Airline to be consulted before reservation and require doctor's letter outlining diagnosis, equipment and settings, blood gas tensions, and that equipment must travel as hand luggage.
- Short haul flights are preferred.
- Dual 110/240 volt function so equipment compatible with voltage at destination.
- Dry cell battery pack for back-up and on long haul flights (wet cell prohibited).

Patients on permanent (24 hour) ventilation

- Medical escort able to change tube, operate suction, and ambubag the patient.

Patients with obstructive sleep apnoea

- Patients should avoid alcohol immediately before and during the flight.
- Patients with mild snoring/hypersomnolence unlikely to need CPAP during flight.
- Those with significant desaturation intending to sleep during the flight should consider using CPAP and it should also be used during sleep at high altitude destinations.

### Previous pneumothorax

- Patients should be able to fly 6 weeks after definitive surgical intervention.
- Patients who have not had surgery must have a chest radiograph confirming resolution.
- Although recurrence is unlikely during flight, consequences may be serious and passengers may wish to consider alternative transport within 1 year of pneumothorax.

### Venous thromboembolic disease (VTE)

See table 1.

### Fitness to fly in childhood

- Children's lung physiology differs from that of adults, especially in the very young. In normal term infants the BTS recommend waiting 1 week after birth to ensure the infant is healthy.
- Because of the risk of apnoeic episodes, ex-premature infants who have had complications should probably not fly under the age of 6 months after the expected date of delivery.
- Infants with any history of neonatal respiratory illness and children with hypoxia due to chronic lung disease who must fly should undergo pre-flight assessment.

**Table 1** Risk factors and advice for patients with venous thromboembolic disease

Risk status	Risk factors	Advice
All passengers	Low	<ul style="list-style-type: none"><li>• Avoid excess alcohol and caffeine-containing drinks</li><li>• Remain mobile/exercise legs</li></ul>
Slightly increased	Aged over 40 Extensive varicose veins Polycythaemia Within 72 hours of minor surgery	<ul style="list-style-type: none"><li>• Avoid alcohol and caffeine-containing drinks</li><li>• Take short periods of sleep</li><li>• Consider support hosiery</li></ul>
Moderately increased	Family history of VTE Recent MI Pregnancy or early postnatal Oestrogen therapy Limb trauma or paralysis	Above plus consider: <ul style="list-style-type: none"><li>• Pre-flight aspirin</li><li>• Graduating compression stockings</li></ul>
High risk	Previous VTE Thrombophilia Within 6 weeks of major surgery Previous stroke Current malignancy	<ul style="list-style-type: none"><li>• Avoid flying or recommend low molecular weight heparin or formal anticoagulation (including return journey)</li></ul>