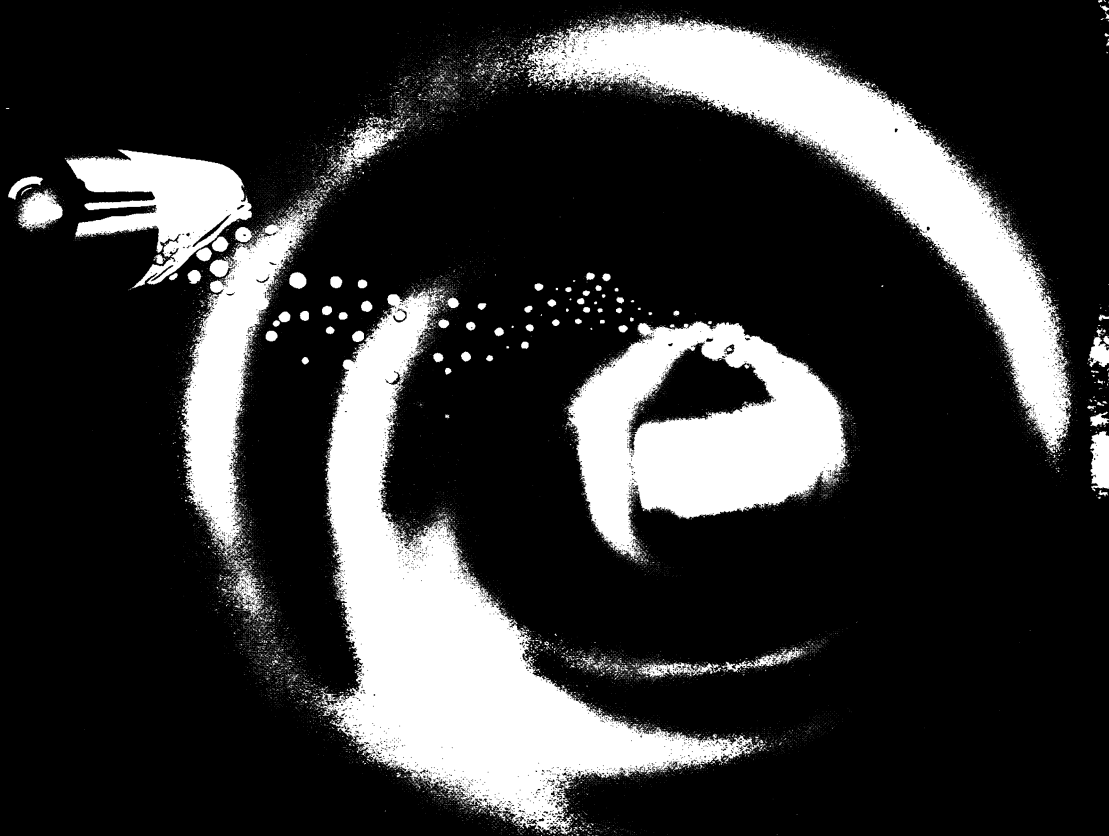


Enteric coated granules for improved enzyme delivery in cystic fibrosis



creon[®]
pancreatin

Capsule dissolves in stomach

Granules unaffected by stomach acid

Enzymes released in duodenum

Mimics the normal digestive process

A predictable release for cystic fibrosis patients

PRESCRIBING INFORMATION: **Presentation:** Brown/yellow capsules containing enteric coated granules of pancreatin equivalent to: 9,000 BP units of amylase; 8,000 BP units of lipase; 210 BP units of protease. Available in packs of 100. Basic N.H.S. price £13.33. **Indication:** Pancreatic exocrine insufficiency. **Dosage and administration:** Adults and children: Initially one or two capsules with meals, then adjust according to response. The capsules should be swallowed whole, or for ease of administration they may be opened and the granules taken with fluid or soft food, but without chewing. If the granules are mixed with food, it is important that they are taken immediately, otherwise dissolution of the enteric coating may result. **Contra-indications, Warnings, etc.** **Contra-indications:** Substitution with pancreatic enzymes is contra-indicated in the early stages of acute pancreatitis. **Warnings:** Use in pregnancy: There is inadequate evidence of safety in use during pregnancy. The product is of porcine origin. Rarely, cases of hyper-uricosuria and hyper-uricaemia have been reported with high doses of pancreatin. Overdosage could precipitate meconium ileus equivalent. Perianal irritation could occur, and, rarely, inflammation when large doses are used. **Product Licence Number:** 5727/0001. **Name and address of Licence Holder:** Kali Chemie Pharma GmbH, Postfach 220, D-3000, Hannover 1, West Germany.

duphar

Further information is available from:

Duphar Laboratories Ltd, Duphar House, Gaters Hill, West End, Southampton SO3 3JD. Tel: (0703) 472281

Top this



✂
 Please send me more information on Phadiatop™
 Name.....
 Address.....
 Position.....
 Return this coupon to:
 Pharmacia Limited,
 Pharmacia House,
 Midsummer Boulevard,
 MK9 3HP

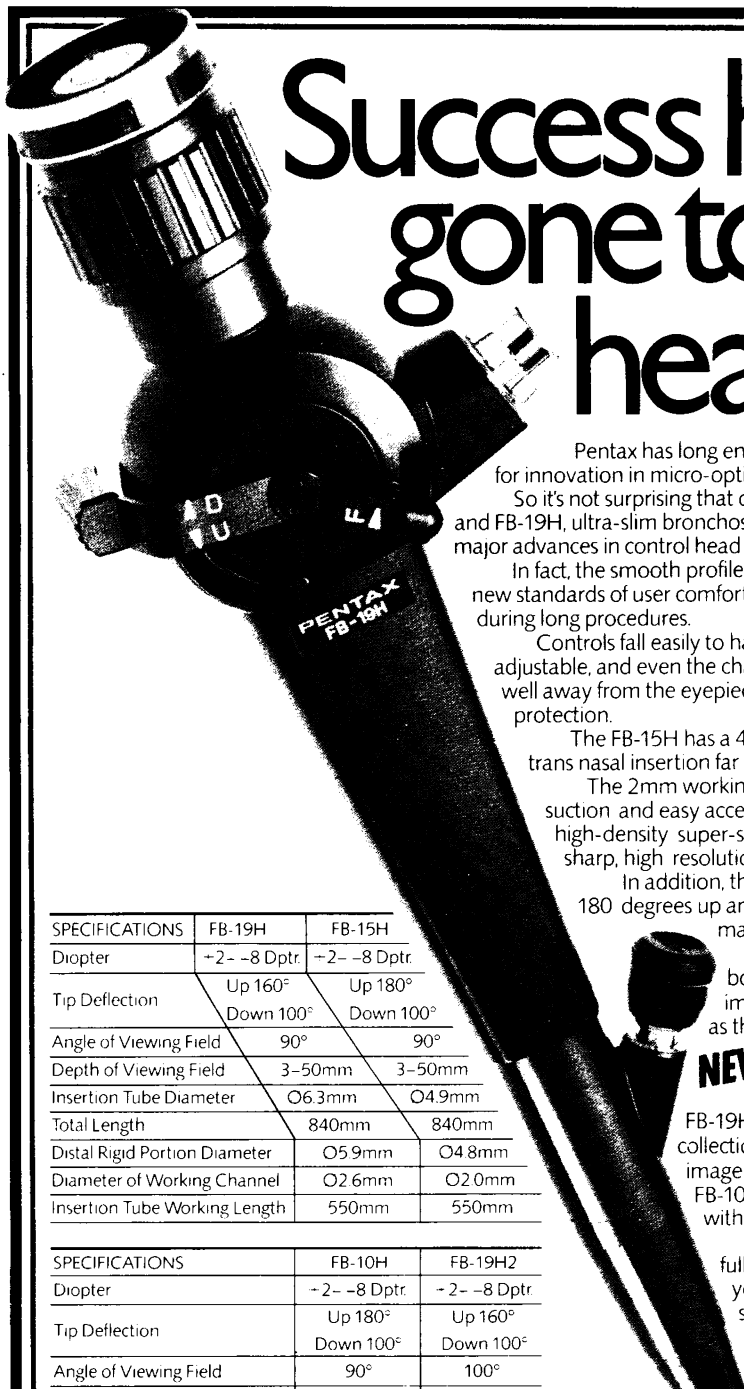
In the diagnosis of inhalant allergy
 as a cause of respiratory symptoms,
 Phadiatop™
 is a simple laboratory test
 gives a yes/no answer
 is more than 95% accurate
 simplifies your diagnostic
 procedures
 helps in your patient management

Phadiatop™
 THE YES/NO ANSWER
 IN INHALANT ALLERGY



Pharmacia Limited, Pharmacia House,
 Midsummer Boulevard, Milton Keynes, MK9 3HP.
 Telephone 0908 661101.

Success has gone to our head!



Pentax has long enjoyed world-wide recognition for innovation in micro-optical technology.

So it's not surprising that our much acclaimed FB-15H and FB-19H, ultra-slim bronchoscopes both incorporate major advances in control head design.

In fact, the smooth profile and compact dimensions set new standards of user comfort and convenience, even during long procedures.

Controls fall easily to hand. The eye-piece is fully adjustable, and even the channel outlet has been located well away from the eyepiece to provide positive protection.

The FB-15H has a 4.9mm insertion tube making trans nasal insertion far less traumatic for the patient.

The 2mm working channel allows for good suction and easy accessory passage and a new high-density super-slim fibre bundle gives brilliant sharp, high resolution images.

In addition, the distal tip has a deflection of 180 degrees up and 100 degrees down for maximum manoeuvrability.

To complete the picture, both instruments are fully immersible and as easy to clean as they are to use.

NEW! Check the specifications of the new additions to the Pentax Range, the FB-19H2, designed for data collection with greatly increased image size, and the super slim FB-10H, only 3.5mm in diameter with a 1.2mm working channel.

Ask your representative for a full demonstration and see how you – and your patients – can share in our success!

SPECIFICATIONS	FB-19H	FB-15H
Diopter	+2 - -8 Dptr	+2 - -8 Dptr
Tip Deflection	Up 160°	Up 180°
	Down 100°	Down 100°
Angle of Viewing Field	90°	90°
Depth of Viewing Field	3-50mm	3-50mm
Insertion Tube Diameter	Ø6.3mm	Ø4.9mm
Total Length	840mm	840mm
Distal Rigid Portion Diameter	Ø5.9mm	Ø4.8mm
Diameter of Working Channel	Ø2.6mm	Ø2.0mm
Insertion Tube Working Length	550mm	550mm

SPECIFICATIONS	FB-10H	FB-19H2
Diopter	+2 - -8 Dptr	+2 - -8 Dptr
Tip Deflection	Up 180°	Up 160°
	Down 100°	Down 100°
Angle of Viewing Field	90°	100°
Depth of Viewing Field	3-50mm	3-100mm
Insertion Tube Diameter	Ø3.5mm	Ø6.3mm
Total Length	840mm	840mm
Distal Rigid Portion Diameter	Ø3.4mm	Ø5.9mm
Insertion Tube Working Length	550mm	550mm
Diameter of Working Channel	Ø1.2mm	Ø2.0mm

PENTAX
LOOKING AHEAD

Pentax UK Ltd
Medical Division
Pentax House
South Hill Avenue
South Harrow
Middlesex
HA2 0LT

Churchill Livingstone 

PULMONARY PHARMACOLOGY

CALL FOR PAPERS

Pulmonary Pharmacology is an international journal devoted to all aspects of lung pharmacology, both basic and clinical.

The subject matter encompasses the major diseases of the lung, physiology and pathology, and drug delivery and metabolism. Papers will be considered for publication on all aspects of pharmacology related to the respiratory tract (airways and upper respiratory tract), particularly vessels, lung parenchyma and pulmonary diseases. Laboratory and clinical research on humans and animals will be considered. Studies relating to chemotherapy of cancer, tuberculosis and infection are not within the scope of the journal.

In addition to original research papers, the journal includes 'rapid communications' and commissioned review articles, together with book reviews and correspondence. Reports on important new results which fall within the scope of the journal may be submitted as a 'rapid communication', which should not exceed 1,000 words.

The journal is subscribed to by pharmacologists and clinical pharmacologists, chest physicians, clinical physiologists, immunologists and specialists in inflammatory diseases. It is also of great interest to pharmaceutical manufacturers.

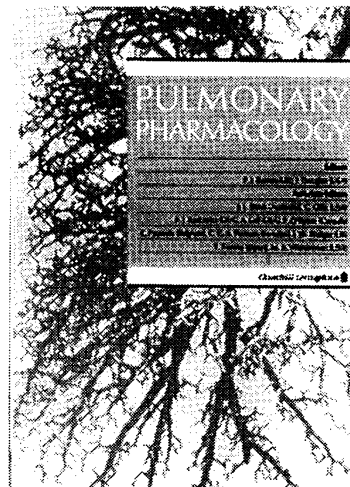
The geographical spread of the editorial team reflects the international scope of the journal.

Editors:

Professor Peter Barnes
National Heart & Lung Institute
Dovehouse Street
London SW3 6LY
UK

Original papers, or 'rapid communications', on any aspect of lung pharmacology, should be sent to the nearest Editor.

Dr James Douglas
John Pierce Foundation Laboratory
290 Congress Avenue
New Haven
Connecticut 06519
USA



Associate Editors:

Dr Judith Black, Sydney, Australia
 Dr Norman Gillis, New Haven, USA
 Dr Philip J. Kadowitz, New Orleans, USA
 Dr Alan Leff, Chicago, USA
 Dr Paul O'Byrne, Hamilton, Canada
 Professor Romain Pauwels, Gent, Belgium
 Professor Carl Persson, Lund, Sweden
 Dr Ian Rodger, Glasgow, UK
 Professor Tadao Tomita, Nagoya, Japan
 Dr Marty Wasserman, Philadelphia, USA

If you would like to receive a FREE sample copy of **Pulmonary Pharmacology**, please write to:

Churchill Livingstone Medical Journals
 Robert Stevenson House
 1-3 Baxter's Place
 Edinburgh, UK

or Churchill Livingstone Inc.
 1560 Broadway
 New York
 NY 10036, USA