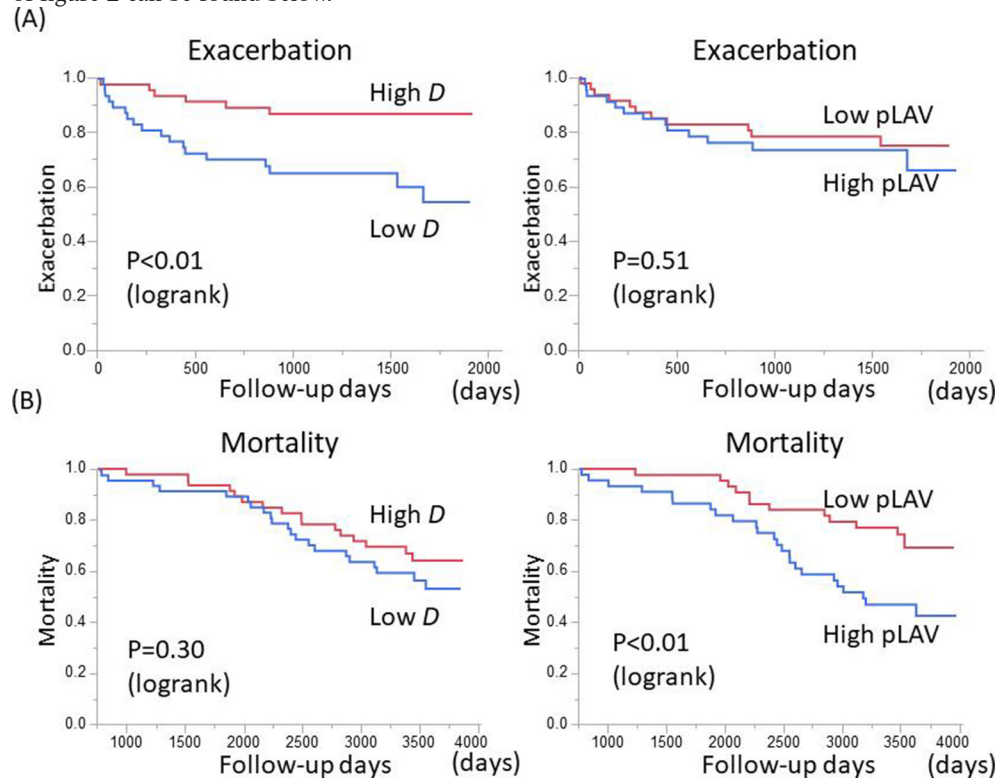


Correction: Percent low attenuation volume and fractal dimension of low attenuation clusters on computed tomography predict different long-term outcomes in COPD

Shimizu K, Tanabe N, Tho NV, *et al.* Percent low attenuation volume and fractal dimension of low attenuation clusters on computed tomography predict different long-term outcomes in COPD. *Thorax* 2020;75(2):116–122. doi: 10.1136/thoraxjnl-2019-213525.

Since the publication of this article, the authors noticed that there was an error of the p-value in panel B of figure 2. This should have been listed as 0.30 and not 0.030. The corrected version of figure 2 can be found below.



© Author(s) (or their employer(s)) 2020. No commercial re-use. See rights and permissions. Published by BMJ.

Thorax 2020;75:e4. doi:10.1136/thoraxjnl-2019-213525corr1

