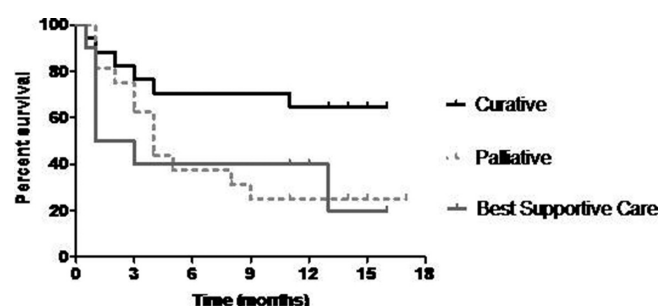


radiotherapy, chemotherapy for SCLC), sixteen (37%) patients with *palliative* intent (radiotherapy, chemotherapy, brachytherapy), and ten (23%) patients received *best supportive care* (BSC) only. Of the five patients with PS 3, one received palliative radiotherapy and the other four BSC. Patients treated with curative intent had 71% survival at six months, 65% survival at 12 months: survival rates significantly higher compared with those receiving palliative treatment or BSC ($p = 0.02$). There was no survival difference between palliative treatment and BSC ($p = 0.81$) (Figure 1).



Abstract P170 Figure 1 Kaplan-Meier curves with survival stratified by treatment

Conclusion When a tissue diagnosis of lung cancer is pursued in those aged 75 and older, most patients will receive specific cancer treatment and this data informs clinical discussions about curative intent outcomes. In those who are PS 3 at baseline, BSC only is the likely outcome, and pursuing tissue diagnosis may not be appropriate.

P171 A LOCAL CANCER NETWORK ROOT CAUSE AUDIT OF 62-DAY LUNG CANCER PATHWAY BREACHES

¹O Eneje, ¹N Kumar, ²D Powrie, ¹B Yung, ³M Lawson. ¹Basildon University Hospital NHS Foundation Trust, Basildon, UK; ²Southend University Hospital NHS Foundation Trust, Southend, UK; ³Broomfield Hospital, Chelmsford, UK

10.1136/thoraxjnl-2015-207770.308

Introduction Over several years there has been an ongoing rise in 62-day Lung Cancer pathway referrals initiated by GPs as two-week wait referrals (2WW). This was particularly marked in 2014 and breach rates increased across the East of England SCN. Within the Essex Lung Cancer Network an audit of these breaches was undertaken by three Trusts to look for common themes and to share best practice.

Methods Data were collected for all pathways that failed to meet the 62-day target across three NHS Trusts in Essex to identify any predictive factors for breaching the pathway. A standard proforma was used for abstraction. Results were analysed using GraphPad Prism 6 (La Jolla, CA).

Results In 2014 a total of 1,419 2WW referrals were received by the three Trusts of which 13–23% were diagnosed with lung cancer. Between 19% and 54% breached the 62-day target (89 of 246 pathways). The median length of the breached pathways varied from 86–88 days by Trust. Trusts did not appear to differ significantly by end treatment after pathway breach. There were generic common themes within the breached pathways of each Trust but for the two worst performing Trusts specific pathway issues were identified. In one Trust it was clear that time delays to perform CT guided lung biopsies with a 2.75 relative risk of breaching if a pathway involved a CT biopsy (95% CI 1.6–4.6,

$p < 0.0001$). At another Trust a high proportion of breached pathways had a bronchoscopy as the first test but went on to have further diagnostic biopsies by other methods.

Conclusion Many of the diagnostic delays were due to complex patient pathways needing multiple diagnostic tests. However for two Trusts significant problems were highlighted for targeted quality improvement plans. Selecting the best test to give diagnostic and staging information is vital particularly when services are stretched and capacity is reached.

P172 TRAINING NURSES IN SAMPLING AND ACQUISITION OF SPECIMEN DURING EBUS GUIDED TRANSBRONCHIAL NEEDLE ASPIRATION

V Johnson, W Stables, S Binu, C Smyth, M Walshaw, K Mohan. Liverpool Heart and Chest Hospital, Liverpool, UK

10.1136/thoraxjnl-2015-207770.309

Introduction EBUS has now become the standard of choice for mediastinal staging and in the diagnosis of paratracheal and peribronchial lesions. EBUS is usually performed as a 2 person procedure, one to locate and align the bronchoscope and a second to carry out node sampling. Whilst these have traditionally both been medical personnel, with the increase in use of this procedure and alterations in the training and availability of medical staff, we wished to look at the feasibility of empowering nurses to perform needle aspiration during EBUS.

Methods We provide a regional service for EBUS, carrying out over 420 procedures per year, often in technically difficult cases where local hospital EBUS has been unhelpful. From January 2015 we trained a band 5 registered nurse in needle aspiration, who randomly assisted in the procedure in 93 of 172 cases up to June 2015. We report our experience in these 93 cases.

Results These 93 patients were referred from 12 hospitals and 20 had undergone previous undiagnostic procedures (6 EBUS, 14 bronchoscopy). The mean age was 67 years (range 27 – 87) and 50 were male. 82 were performed under local anaesthesia using lignocaine spray and intravenous midazolam (1 – 10 mg; mean 4 mgs) and the remaining 11 under general anaesthesia. 200 lymph nodes (2R, 4R, 4L, 7, 10R, 10L, 11R) and 13 lung lesions were biopsied. Results were as follows: Adequate samples were obtained in 99% (91/93) and the NSCLC - NOS rate was 2%. 31 adenocarcinoma, 10 squamous cell carcinoma, 10 small cell carcinoma, 1 NSCLC - NOS, 1 large cell neuroendocrine carcinoma, 1 soft tissue lesion (repeat EBUS showed myxoid spindle cell mesenchymal lesion), 1 breast carcinoma, 19 nonspecific benign nodes, 15 sarcoid and 2 TB. There were no complications.

Conclusion Our findings suggest that with motivated staff and adequate training, it is possible for nurses to perform needle aspiration during EBUS procedure with excellent results. This could be adopted as the method of choice by other centres as EBUS services continue to expand.

P173 THE INVESTIGATION OF PATIENTS REFERRED WITH HAEMOPTYSIS VIA THE TWO WEEK WAIT SYSTEM IN SOUTHMEAD HOSPITAL, BRISTOL, UK

J Harper, J Curran, M Plummeridge. Southmead Hospital, Bristol, UK

10.1136/thoraxjnl-2015-207770.310