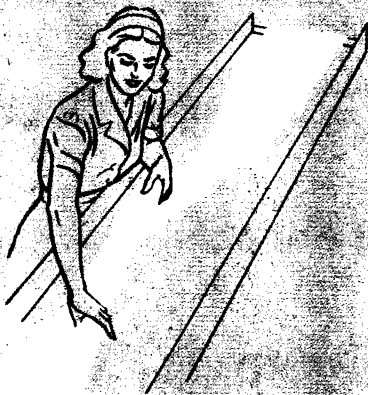


# UNIFORMITY OF SUTURE DIGESTION IN TISSUE



*Checking ribbons of surgical gut preliminary to immersion in chrome baths for true chromicization.*

## ETHICON CHROMICIZED GUT SUTURE GIVES YOU CONTROLLED RESULTS

**CHROMIC SUTURES** when their use is indicated should have the following attributes: (1) Sufficient chrome content to withstand digestion and so obviate the possibility of post-operative herniae and wound disruptions. (2) Chrome content should not be so high as to result in fragments resisting digestion and perhaps causing knot extrusions.

**ETHICON** technicians chromicize raw gut strands at the ribbon stage and rigidly control—to laboratory standards—the chromic content so that a surgically satisfactory suture is placed in the surgeon's hands by his theatre sister.

**SURFACE-CHROMICIZING**—In enzyme solution, the core of most surface-chromicized gut digests readily, leaving a hollow cylinder which separates into ribbons. This cylinder may be excessively resistant to enzyme action and remain as an undigested foreign body indefinitely.

**RIBBON-CHROMICIZING**—Ethicon Ribbon-Chromicized gut exhibits uniform enzyme resistance throughout digestion. It digests from the surface inward, and retains its integrity as unified sutures until dissolution approaches completion. Total digestion eliminates the danger of knot extrusions.



**LOOK TO THE LEADERS FOR LEADERSHIP...**

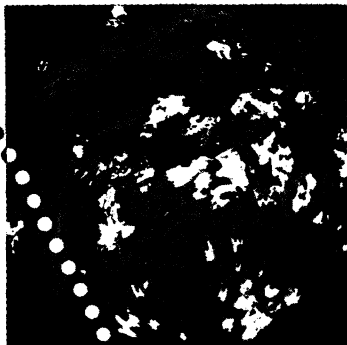
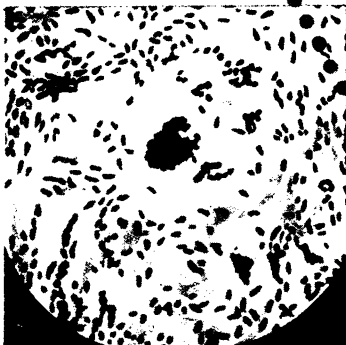


**ETHICON SUTURE LABORATORIES LTD**

BANKHEAD AVENUE, EDINBURGH

Associate Companies: NEW BRUNSWICK, NEW JERSEY SAO PAULO, BRAZIL SYDNEY, AUSTRALIA

# BIO-SORB COMPLETELY ELIMINATES GLOVE POWDER ADHESIONS



Photographs show talc granulomas in myometrium. Left, taken under ordinary light. Right, identical field taken under polarized light.

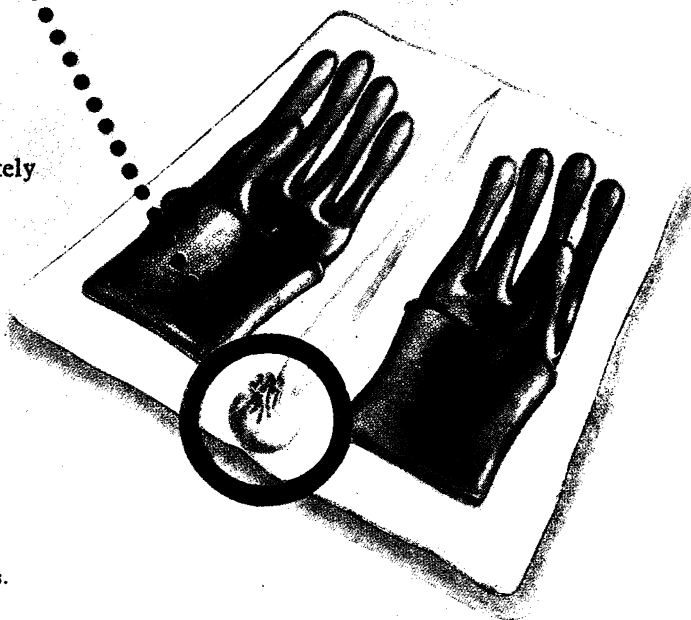
BIO-SORB ABSORBABLE GLOVE POWDER is derived from corn starch. It is a freely-flowing pure white powder especially processed both physically and chemically to prevent gelatinisation.

The routine use of BIO-SORB completely eliminates the hazards inherent in the use of talc or French chalk which, all published reports agree, is unsafe as a glove lubricant and so helps to reduce the likelihood of post-operative complications.

Bio-Sorb has the following valuable properties :

- Compatible with body tissues.
- Does not contain FORMALDEHYDE.
- Perfect rubber lubricant harmless to gloves.
- Readily sterilized by standard techniques.
- Gives the surgeon maximum comfort and accuracy of "touch".

Full technical and clinical literature is available on request



**ETHICON SUTURE LABORATORIES LTD**  
BANKHEAD AVENUE, EDINBURGH

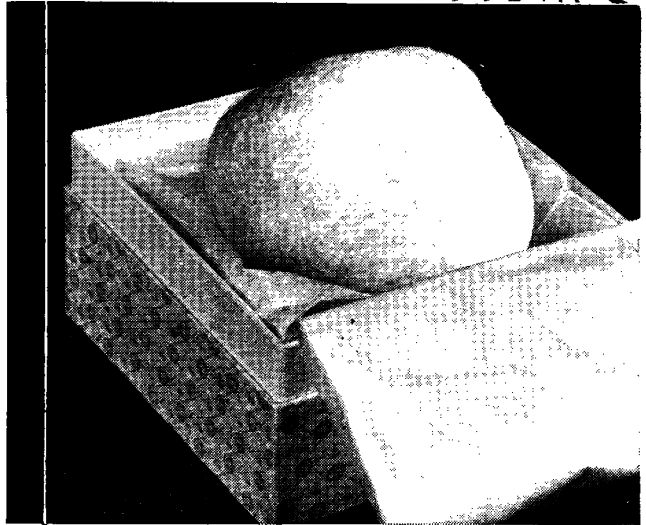
ANOTHER **ETHICON**  
SERVICE TO SURGERY

## COLLAPSE THERAPY and PNEUMONECTOMY

**POLYSTAN SPONGE**

The advantages of 'POLYSTAN' Polythene Sponge as a filling material for extra-pleural pneumothorax and pneumonectomy are as follows:—

- 'POLYSTAN' is non-irritating to body tissues.
- 'POLYSTAN' is non-absorbable.
- 'POLYSTAN' induces no foreign body reaction.
- 'POLYSTAN' does not interfere with the action of chemotherapeutics and antibiotics, and is not affected by them.
- 'POLYSTAN' gives no shadow on the X-ray film.
- 'POLYSTAN' has a spongy texture and this contributes to its fixation through ingrowth of connective tissue.



Literature and prices on application to:

HERTS PHARMACEUTICALS LTD.  
WELWYN GARDEN CITY, ENGLAND

**'POLYSTAN' PLOMBS****Three shapes :**

The 'Polystan' plomb is supplied in three shapes:

- 'Polystan' Plomb No. 1, shaped to fit the apex.
- 'Polystan' Plomb No. 2, a circular, slightly double-convex plomb, used to supplement plomb No. 1.
- 'Polystan' complete prosthesis No 3 for insertion following pneumonectomy.

**Two types :**

Plombs 1 and 2 are made in two consistencies, a firm *D* plomb, used in extraperiosteal operations, and a soft *S* plomb, used in extrapleural operations.

# For wide-range choice of administrative forms...

Every recognized and commonly used means of PAS administration is made available through one or other of the various forms of 'Aminacyl' brand of *p*-aminosalicylic acid.

## Cachets

Cryst. Ca or Na PAS: 1.5 g.n., 100's and 500's; 2.0 gm., 80's and 400's.

## Granulate

Cryst. Ca PAS: 100 gm., 400 gm., 2,000 gm. packs.

## Dragées

Cryst. Ca or Na PAS: 0.4 gm., 0.5 gm., 0.75 gm., 250's and 1,000's.

## Dry Ampoules

1 and 6 : 2.41 gm. crystal. 2.0 gm. Na PAS anhyd.

## Solution Ampoules

Na PAS: 20% topical; 2.8% (isotonic) ophthalmic.

## Bulk Powder

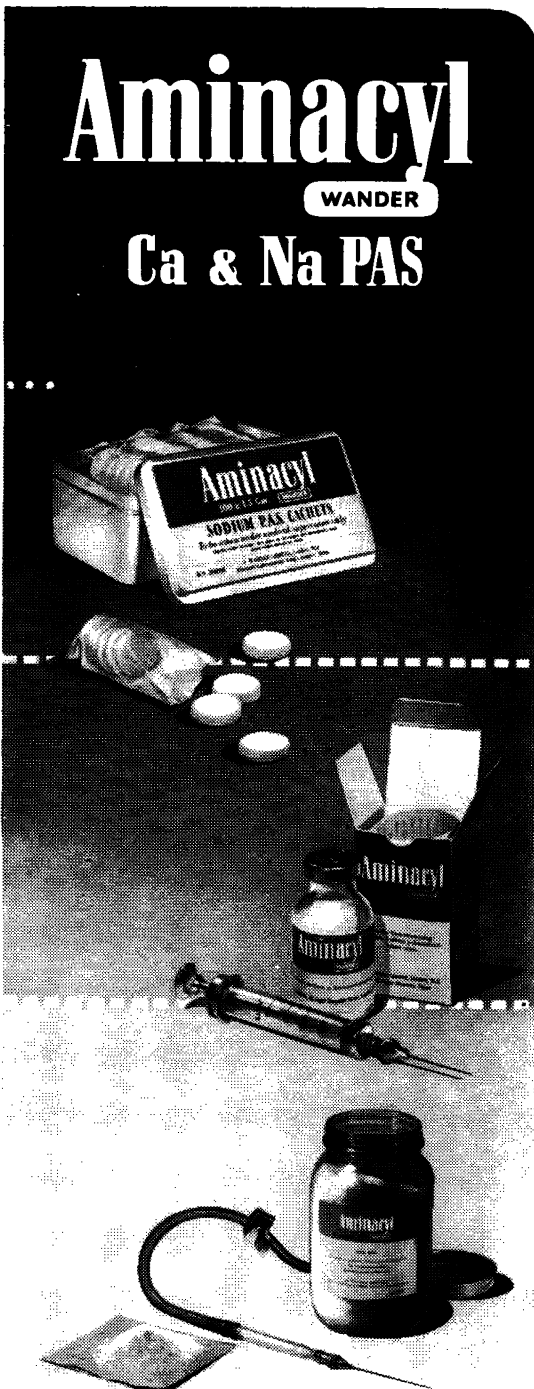
Cryst. Ca or Na PAS: 100 gm., ½, ¼, 1 and 5 kg.

## Intravenous

Purified crystalline Na PAS for I.V. solutions; bottle of 250 gm.

Further information from the Medical Dept.,

**A. WANDER LIMITED,**  
42 Upper Grosvenor Street,  
Grosvenor Square, London W.1.

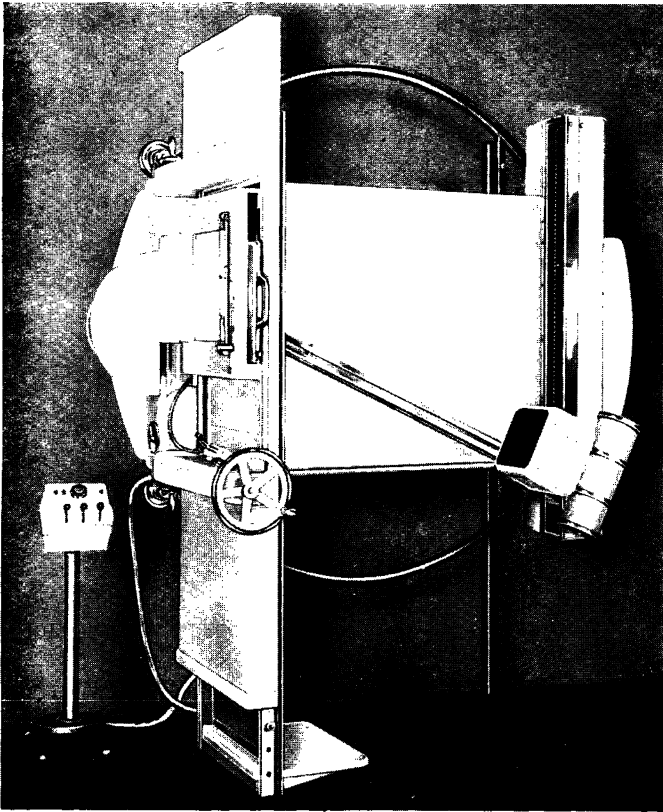


CANADA: A. Wander Ltd., Peterborough, Ontario.  
AUSTRALIA: A. Wander Ltd., Devonport, Tasmania.  
NEW ZEALAND: A. Wander Ltd., Christchurch.  
INDIA: Grahams Trading Co (India) Ltd., 16 Bank Street, Bombay.  
PAKISTAN: Grahams Trading Co. (Pakistan) Ltd., P.O. Box 30, Karachi.  
CEYLON: A. Baur & Co., Ltd., Co'ombo. M. 574



SIEMENS

# UNIVERSAL PLANIGRAPH



The unique stand for layer radiography of patients in a vertical, recumbent or oblique position.

This design of a universal apparatus for layer radiography incorporates outstanding features which render it suitable for diagnosis in chest radiography and also for all other examinations where layer radiography is indicated.

The depth of the layer radiograph to be taken can be predetermined by fluoroscopy, resulting in considerable saving of film material.

*Planigraph in vertical position*

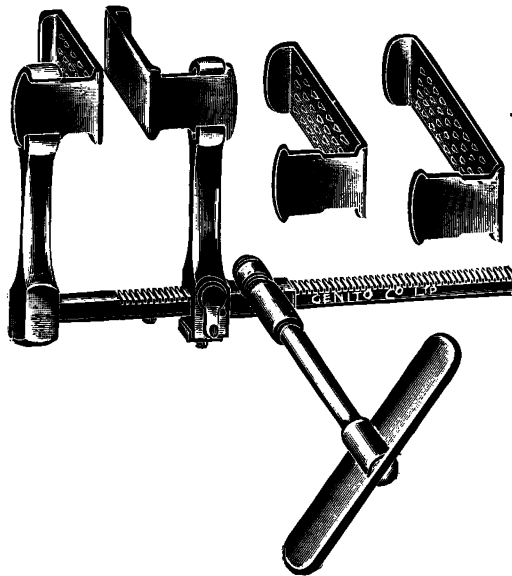
*As supplied to Westminster Hospital, London,  
and Churchill Hospital, Oxford.*

*For further details, write to:*

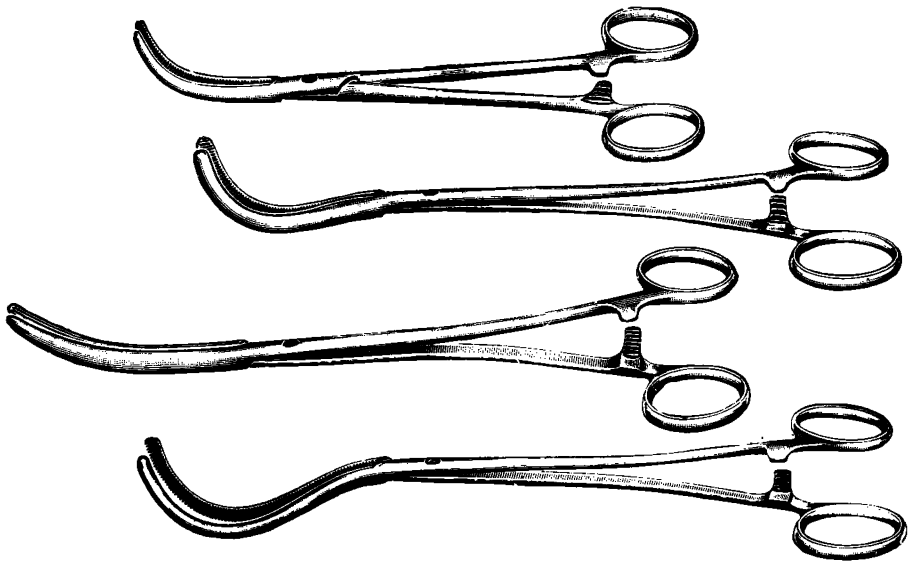
**SIEREX LTD., 262-4 REGENT STREET, LONDON, W.1**

**Telephone: Regent 2626**

Sole distributors for United Kingdom, Eire, and British Colonies for Siemens Reiniger Werke A.G., Erlangen



RIB RETRACTOR, A. TUDOR EDWARDS', with three pairs detachable blades.



COARCTATION CLAMPS, by C. CRAFOORD.

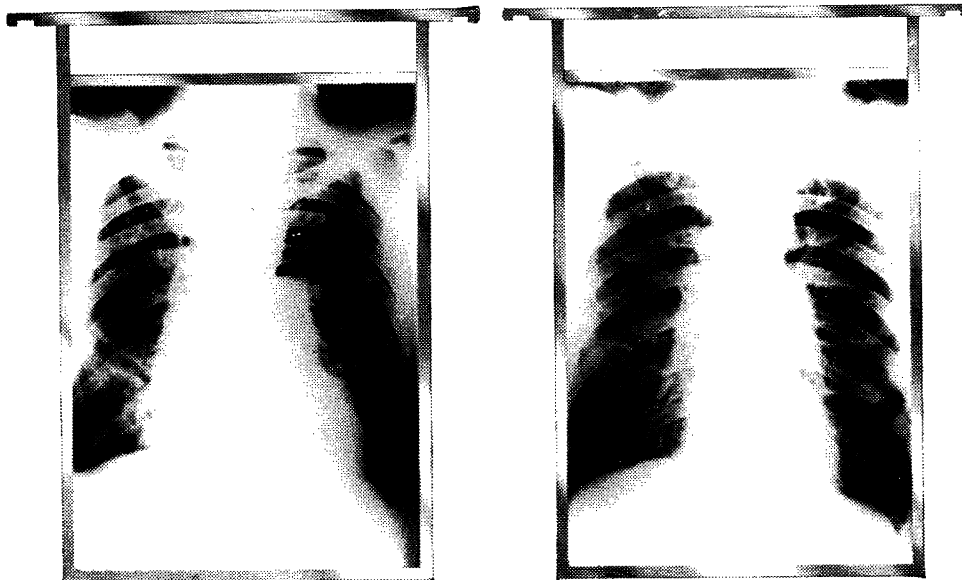
**THE GENITO-U RINARY MFG. CO., LTD.**

By Appointment to St. Peter's Hospital for Stone, India Office, War Office, Admiralty, Crown Agents for the Colonies  
 THORACOSCOPES — LARYNGOSCOPES — BRONCHOSCOPES — INSTRUMENTS for THORACIC SURGERY

**28a, DEVONSHIRE STREET, LONDON, W.1**

Telephone: Welbeck 2835 (3 lines). Telegraphic Address: "Cystoscope. Wesdo. London."

subjective and  
**OBJECTIVE** improvement  
*in* COR PULMONALE



before treatment

after 6 weeks' treatment

*with* **Benecardin**  
TRADE MARK

a highly purified preparation of KHELLIN

available for oral or intramuscular administration

**Benger Laboratories**

Benecardin is a useful ancillary in the management of chronic anoxic heart disease in which true bronchial spasm is a definite contributory factor. Benecardin appears to act directly as a dilator of

the bronchi. Its maximal effect will be produced when reduction of the bronchial lumina, resulting from increased mucosal turgidity or irreversible structural changes in the lung, do not predominate.



# PLASTIC INTENSIFYING SCREENS

- Practically indestructible
- Impervious to chemical staining
- Pliable
- Easily mounted in cassettes
- Washable
- Supplied in two varieties:

**EXPRESS** *high speed with fine grain.*

**FINE GRAIN** *medium speed with extremely fine grain. Ideal for bone work.*

Details and prices from  
Gevaert Ltd. X-ray Dept.



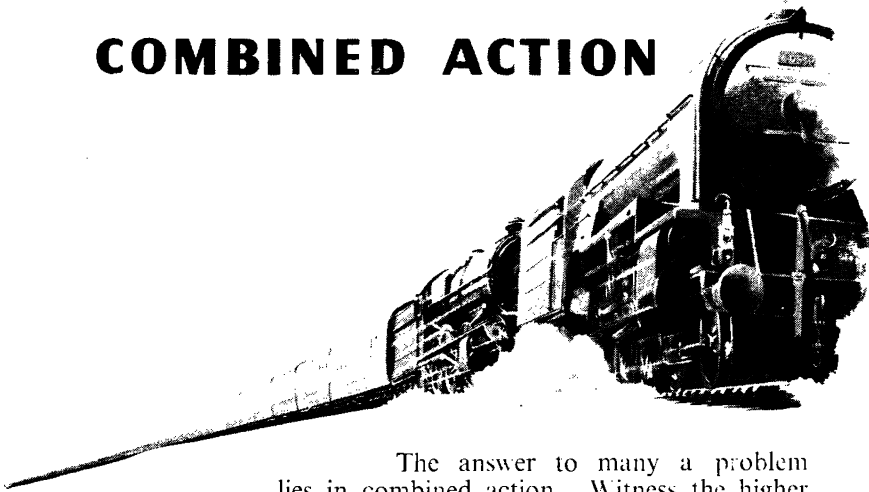
Ask for 'Gave-Art'

GEVAERT LIMITED · ACTON LANE · HARLESDEN · NW10 · Tel. ELGAR 6755





## THERE'S STRENGTH IN COMBINED ACTION



The answer to many a problem lies in combined action. Witness the higher blood levels and the greater clinical efficacy that have been reported from the oral administration of penicillin and the sulphonamides simultaneously in cases when the oral administration of the antibiotic or chemotherapeutic agent alone has been ineffective. A convenient means of applying this combined antibacterial therapy is Sulpenin. Containing penicillin, sulphadiazine and sulphamerazine in balanced dosage, it provides a valuable treatment for many infections due to susceptible micro-organisms. By utilising the synergistic action between penicillin and the sulphonamides the antibacterial range is increased, the likelihood of kidney damage is lessened and the tendency for the bacteria to develop mutant strains resistant to one or other of the component drugs is reduced.

# SULPENIN

*Combined Oral Penicillin and Sulphonamide Therapy*

In tubes of 10 and bottles of 100 tablets.

Each tablet contains  
Crystalline Penicillin G (Potassium Salt), 100,000 units,  
Sulphamerazine, 0.25 gramme, Sulphadiazine, 0.25 gramme.

Literature and Samples on request.

**ALLEN & HANBURYS LTD LONDON E 2**  
TELEPHONE BISHOPSGATE 3201 (17 LINES) TELEGRAMS "GREENBURYS BETH LONDON"

# Sedative and Therapeutic TRISAN<sup>\*</sup> in Bronchial ASTHMA

**TRISAN**—Hommel is an established agent in the symptomatic treatment of bronchial asthma and related states. It combines in its formula both sedative and anti-spasmodic drugs of recognized performance.

**COMPOSITION** Physicians experienced in asthma have long recognized the value of concurrent prescription of Potassium Iodide and Chloral Hydrate; a small dose of Soluble Barbitone is added as a sedative adjuvant to enhance their therapeutic effect. Trisan therefore comprises—

|                                       |         |
|---------------------------------------|---------|
| <i>Iodide of Potassium B.P.</i> ..... | 6.03%   |
| <i>Chloral Hydrate B.P.</i> .....     | 7.11%   |
| <i>Barbitone Sodium B.P.</i> .....    | 0.24%   |
| <i>Alcohol</i> .....                  | 4.00%   |
| <i>Excipient ad</i> .....             | 100.00% |

**CLINICAL INVESTIGATION** shows that Trisan produces spasmolysis and relief of expectoration in nocturnal asthma; its sedative component satisfactorily encourages sleep and provides an additional value in asthma complicated by hypertension.

**INDICATIONS** Trisan is indicated in bronchial asthma, especially nocturnal; certain types of hypertension; allergic diathesis. It is contra-indicated in iodine allergy and hyperthyroidism.

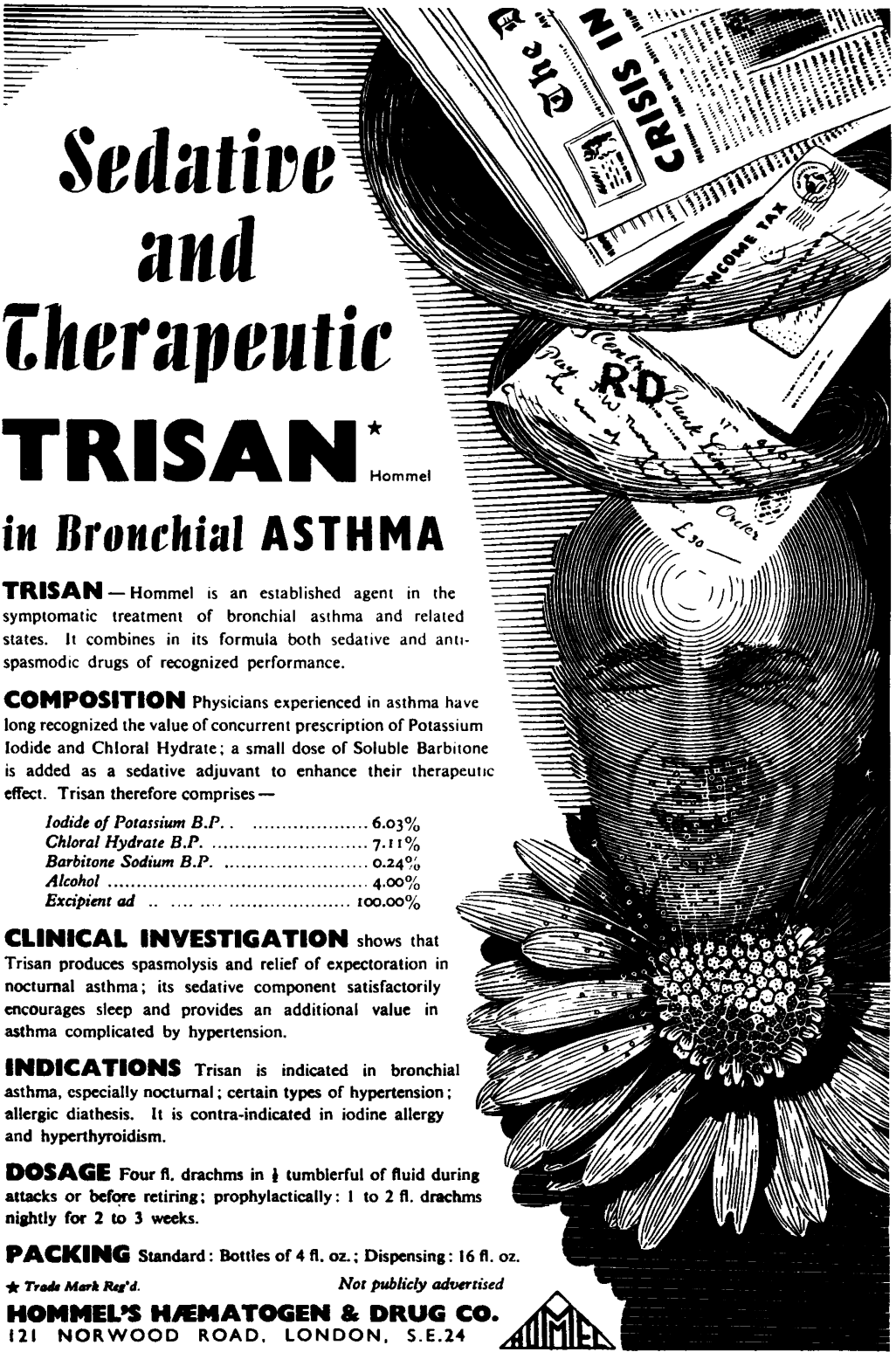
**DOSAGE** Four fl. drachms in  $\frac{1}{2}$  tumblerful of fluid during attacks or before retiring; prophylactically: 1 to 2 fl. drachms nightly for 2 to 3 weeks.

**PACKING** Standard: Bottles of 4 fl. oz.; Dispensing: 16 fl. oz.

★ *Trade Mark Reg'd.*

*Not publicly advertised*

**HOMMEL'S HÆMATOGEN & DRUG CO.**  
121 NORWOOD ROAD, LONDON, S.E.24



# Aleudrin

TRADE MARK

The ORIGINAL Brand

N-Isopropyl-nor-adrenaline sulphate

For the treatment of bronchospasm in

## ASTHMA

Bronchial Asthma · Emphysema  
and Chronic Bronchitis

**ALEUDRIN Tablets**  
for sublingual administration

**ALEUDRIN Solution**  
for inhalation



**LEWIS LABORATORIES LTD · LEEDS · 9**

The  
"LEWLAB" INHALERS  
are particularly  
recommended  
for use with  
Aleudrin Solution

*and now*

for efficient SUPPORTIVE

*"It is now possible to manufacture dextran on a commercial scale with a narrow range of molecular size. Preliminary trials with this narrow fraction dextran have been eminently satisfactory; 60 per cent of the dextran remains in the circulation after 24 hours, and thus the blood volume can be maintained without difficulty over the crucial 48 hours after operation.*

*There is little doubt that the narrow fraction dextran will revolutionize supportive therapy, and may be regarded as one of the major advances of the year."*

BRITISH ENCYCLOPEDIA OF MEDICAL PRACTICE  
(MEDICAL PROGRESS) 1952. 26

THERAPY . . .

# *DEXTRAVEN*

Trade Mark

A new "NARROW FRACTION" dextran preparation with optimum range of molecular size, DEXTRAVEN is the outcome of intensive research in close collaboration with various academic centres

*it produces*

**RAPID** ELEVATION and  
**PROLONGED** MAINTENANCE  
of BLOOD VOLUME

**DEXTRAVEN** has been developed for the  
efficient prophylaxis and treatment of shock

---

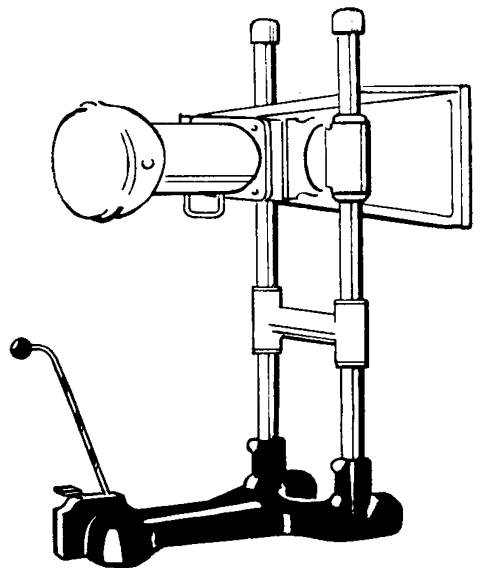
**Benger Laboratories**

H O L M E S   C H A P E L   ·   C H E S H I R E   ·   E N G L A N D



## Against Tuberculosis

The Odelca X-ray Camera is an economical, efficient and reliable aid in fighting tuberculosis. And we do not use the word economical in any loose sense. The Odelca gives a 15:1 saving of photographic material compared with the direct method. As for efficiency. . . . the lens has a very high aperture: 1:0.75 G.R.A., with excellent overall definition and a resolving power of more than 30 lines per mm. The Odelca can be used both for mass radiography and single pictures; it is adaptable to any X-ray apparatus of sufficient power and gives double the sharpness over the whole field with extremely high luminosity due to the new Bouwers' mirror system. The 70 mm. film permits study with the naked eye. . . . Add to these points the proven fact that the Odelca is the world's fastest X-ray camera and it will be apparent how much the Odelca can help in the fight against tuberculosis.



**GR** **GENERAL RADIOLOGICAL**  
 MAKERS OF X-RAY AND ELECTRO-MEDICAL EQUIPMENT

15-18 CLIPSTONE STREET, GT. PORTLAND STREET, LONDON, W.1. PHONE: MUSEUM 3121  
 CRC 25

## **A** new advance in the chemotherapy of tuberculosis



The value of P.A.S. in certain stages of tuberculosis is now accepted. The drug is, however, very rapidly excreted, and continued medication at intervals of 2-3 hours is essential if the necessary blood titre is to be maintained. Administration in the form of 'Enseals' brand timed disintegrating tablets offers the following advantages.

● **ABSENCE OF GASTRIC SYMPTOMS.** Ensures that the full amount needed will be taken. The patient is not tempted to miss occasional doses.

● **HIGHER CONCENTRATION.** Each tablet contains 0.5 Gm. para-aminosalicylic acid, equivalent to 0.69 Gm. of hydrated sodium P.A.S.

● **THERAPEUTIC LEVEL MAINTAINED.** The delayed action of 'Enseals' can be made use of to keep up the blood level during the night, when it normally falls almost to zero. (Dosage schedule on request).

● **'ENSEALS' ARE DIFFERENT.** Relying only on time and moisture for disintegration, their action is virtually independent of the pH of the small intestine.

*'Enseals' brand timed disintegrating tablets each containing 0.5 Gm. para-aminosalicylic acid are supplied in bottles of 100, 1,000 and 5,000 (No. 69).*

*Lilly*  
TRADE MARK

ELI LILLY AND COMPANY LIMITED, BASINGSTOKE, HANTS

**STANDARD X-RAY FILM**

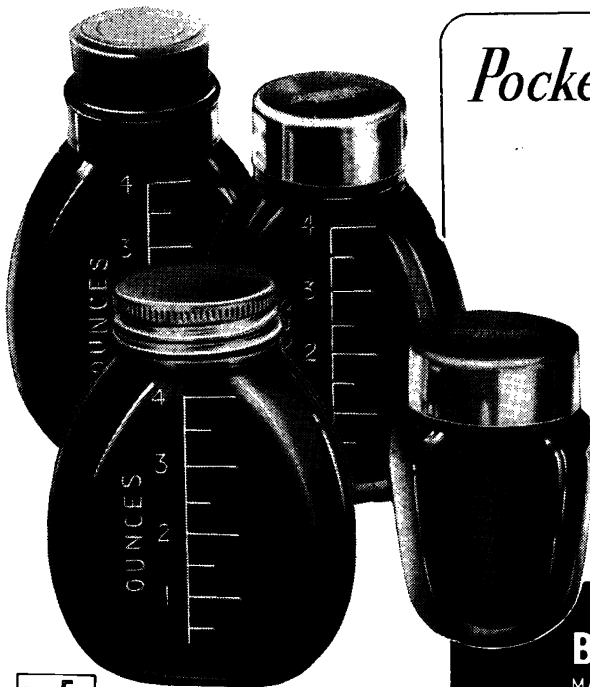
in conjunction with ILFORD Standard Tungstate intensifying screens, is an ideal combination for chest radiography in all cases where the available power permits sufficiently brief exposure times. With a kilovoltage appropriate to the subject, its gradation is such that lung detail is well defined in all regions and, if exposure is reasonably correct scatter effects are practically negligible.

# ILFORD X-ray films

**RED SEAL X-RAY FILM**

is more than twice as fast as ILFORD Standard X-ray film and its use is recommended when exposures would otherwise be longer than 0.1 second. It is also of particular value when a pathological condition presents an unusually long range of subject opacities, or when it is desired to limit the X-ray dosage in an extensive examination. Many workers prefer Red Seal film for all thoracic radiography, since they consider that the many advantages offered by its phenomenal speed are well worth the little extra care necessitated by its use.

ILFORD LIMITED · ILFORD · LONDON



## *Pocket* SPITTING FLASKS

MADE IN DARK BLUE GLASS

*For use in preventing the spread of*

### TUBERCULOSIS

- Top left: No. 1, fitted with non-absorbent rubber plug.
- Top right: No. 2, fitted with nickelled bayonet screw cap and rubber washer.
- Bottom left: No. 6, graduated and fitted with burnished aluminium cap and rubber wad.
- Bottom right: No. 4 (small), with nickelled bayonet screw cap and rubber washer.



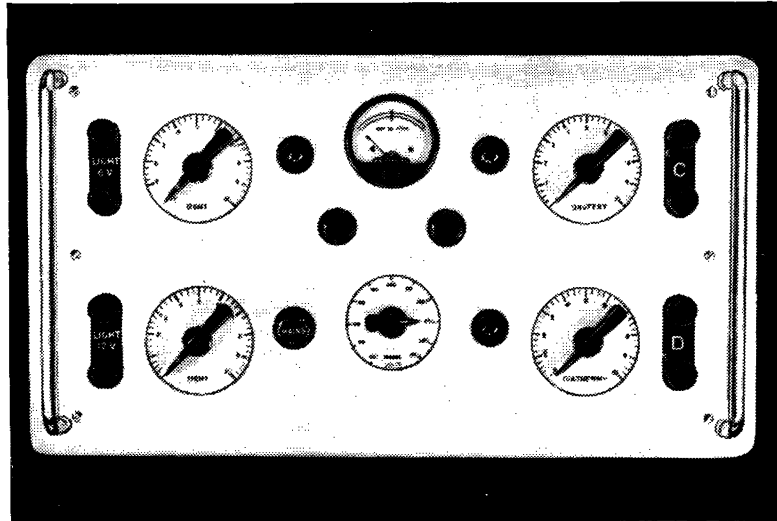
"The sign of a good bottle"

**BEATSON, CLARK & CO. LTD**  
 MANUFACTURERS OF CHEMICAL AND MEDICAL GLASS  
 ROTHERHAM Established 1751 YORKS



# DIAPANTOM VALVE OPERATED SURGICAL DIATHERMY APPARATUS

- COMPACT
- PORTABLE
- HIGH OUTPUT
- CAUTERY CIRCUIT
- 2 LIGHT CIRCUITS
- MAINS SELECTOR
- MODERATE PRICE



SIEREX LIMITED · 262 4 REGENT STREET W1 · TEL: REGent 2626

# MUNDESLEY SANATORIUM

MUNDESLEY, NORFOLK

TERMS FROM 16 GUINEAS WEEKLY (Single Room), waiting list 2 weeks  
 „ 13 „ „ (Shared Room), immediate vacancies

*Medical Superintendents:*

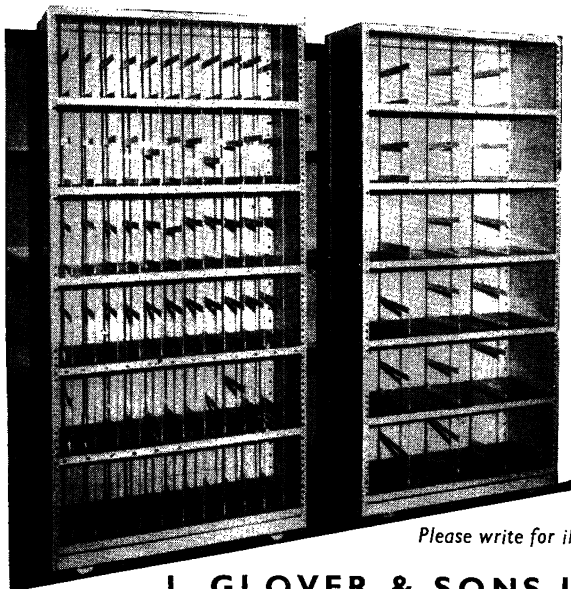
E. C. WYNNE-EDWARDS,  
 M.B.(Cantab.), F.R.C.S.(Edin.)

GEORGE H. DAY,  
 M.D.(Cantab.)

*For all information apply*  
 THE SECRETARY

Telephone: Mundesley 94 and 95 (2 lines)

# A New Type of Shelving for Storing X-Ray Films



Designed specially for use in hospitals, this new method of storage using vertical rods and adjustable horizontal strips makes it simple to divide shelves into 3 in., 6 in., 9 in., or 12 in. compartments without the normal bin dividers. Label holders are provided and the compartments can be numbered for easy reference. Fixed or mobile units can be supplied.

## Stormor

— of course !

Please write for illustrated Brochure which fully describes STORMOR Storage Equipment.

**J. GLOVER & SONS LTD.** (Head Licensees—Foulkes Patents)

71, GROTON ROAD, LONDON, S.W.18 Telephone: **BATtersea 6511** & AT BRISTOL, LEEDS & MANCHESTER

## Your Own Insurance Agency

GIVES DEFINITE ADVANTAGES  
TO YOU

- Independent and Unbiased Advice
- Substantial Rebates
- All profits to Medical and Dental Charities

ALL CLASSES OF  
INSURANCE

Life Pension Sickness  
Motor Household Education

LOANS FOR THE PURCHASE OF  
HOUSES—EQUIPMENT—MOTOR CARS  
and approved DENTAL PRACTICES a  
speciality



**Medical Insurance Agency Ltd.**

B.M.A. House, Tavistock Square (Chief Office),  
London, W.C.1. Tel. : EUSton 5561-2-3

Chairman: General Manager:  
JAMES FENTON, C.B.E., M.D., D.P.M. A. N. DIXON, A.C.I.I.  
Hon. Secretary: HENRY ROBINSON, M.D., D.L.

EDINBURGH :  
6 Drumshugh Gardens  
GLASGOW :  
234 St. Vincent Street  
LEEDS : 20/21 Norwich Union  
Buildings, City Square

MANCHESTER : 33 Cross St.  
DUBLIN : 28 Molesworth St.  
BIRMINGHAM :  
154 Great Charles Street  
CARDIFF : 195 Newport Rd.  
NEWCASTLE : 16 Saville Row

TUBERCULOSIS EDUCATIONAL INSTITUTE

**REFRESHER COURSES**  
IN

1953

**Preliminary Announcement**

Provisional arrangements have been made for three  
T.E.I. Refresher Courses in 1953.

**14th to 17th April: LONDON**

Concurrent lectures for Doctors, Health Visitors,  
Nurses, Social Workers and Administrators.

**11th to 19th May: PARIS**

(In collaboration with the Comité National de  
Défense contre la Tuberculose.) For Doctors only.

**1st to 4th September: CAMBRIDGE**

For Doctors only.

Please address all enquiries to the Secretary

**TUBERCULOSIS EDUCATIONAL INSTITUTE**

Tavistock House North, Tavistock Square,  
London, W.C.1.

# BRITISH HEART JOURNAL

CONTENTS—OCTOBER, 1952

## THE LESSER ELECTROCARDIOGRAPHIC SIGNS OF CARDIAC PAIN

By William Evans and Colin McRae

## CARDIOGRAPHIC STUDIES IN SEVERE PULMONARY EMPHYSEMA

By J. P. D. Mounsey, L. W. Ritzmann, and N. J. Selverstone

## THE CARDIOGRAPHIC DIAGNOSIS OF COMBINED VENTRICULAR HYPERTROPHY

By Annamaria Pagnoni and J. F. Goodwin

## A COMPARISON OF UNIPOLAR LEADS OBTAINED WITH THE METHODS OF WILSON AND GOLDBERGER

By K. Braun and A. M. Cohen

## THE RESPONSE OF ARRHYTHMIAS AND TACHYCARDIAS OF SUPRAVENTRICULAR ORIGIN TO ORAL PROCAINE AMIDE

By Jerome A. Schack, Irwin Hoffman, and Harry Vesell

## PROCAINE AMIDE IN THE CONTROL OF CARDIAC ARRHYTHMIAS

By B. G. B. Lucas and D. S. Short

## CONGENITAL HEART DISEASE IN ONE OF UNIOVULAR TWINS

By Geoffrey Wade

## THE SIGNIFICANCE OF THE DIRECTION OF THE P WAVE IN DEXTROCARDIA AND ISOLATED LÆVOCARDIA

By Maurice Campbell and Geoffrey Reynolds

## THE SURGICAL AND PATHOLOGICAL ANATOMY OF THE MITRAL VALVE

By R. C. Brock

## THE ANOXÆMIC TEST FOR CORONARY INSUFFICIENCY

By Richard W. D. Turner and Eric V. B. Morton

### CASE REPORTS

#### A CASE OF VENTRICULAR FIBRILLATION

By G. Austin Gresham

#### COARCTATION OF THE AORTA

By M. McGregor and M. Medalie.

#### COAL-GAS POISONING AND CARDIAC SEQUELÆ

By Montague Hadley

#### RUPTURE OF THE INTERVENTRICULAR SEPTUM

By Byron Evans and W. F. Anderson

#### PROCEEDINGS OF THE BRITISH CARDIAC SOCIETY

#### EUROPEAN CONGRESS OF CARDIOLOGY—SCIENTIFIC PROGRAMME

#### ABSTRACTS

*Annual Subscription 42/—, U.S.A. \$7.00*

From Publishing Manager,  
B.M.A. House, Tavistock Square, London, W.C.1

the 'spreading factor'



in paediatrics

**'HYALASE' . . . . .**

**Benger Laboratories**

a preparation of the enzyme hyaluronidase extensively employed as an aid to subcutaneous rehydration therapy is of particular value in infants.

'Hyalase' is also widely used to facilitate local anaesthesia in obstetric and orthopaedic practice and has recently been found of value in plastic surgery.

*Details of these and other applications are obtainable on request.*

BENGER LABORATORIES LIMITED · HOLMES CHAPEL · CHESHIRE · ENGLAND