

ORIGINAL ARTICLE

Peptide-induced immune regulation by a promiscuous and immunodominant CD4T-cell epitope of Timothy grass pollen: a role of Cbl-b and Itch in regulation

Stephen J Till,^{1,2} Eleanor J Raynsford,^{2,3} Catherine J Reynolds,^{2,3} Kathryn J Quigley,^{2,3} Agnieszka Grzybowska-Kowalczyk,^{2,3} Lavina R Saggat,² Andrea Goldstone,^{2,4} Bernard Maillere,⁵ William W Kwok,⁶ Daniel M Altmann,³ Stephen R Durham,^{2,4} Rosemary J Boyton^{2,3,4}

► Additional material is published online only. To view please visit the journal online (<http://dx.doi.org/10.1136/thoraxjnl-2013-204324>).

For numbered affiliations see end of article.

Correspondence to

Dr Rosemary J Boyton, Lung Immunology Group, Section of Infectious Diseases and Immunity, Department of Medicine, MRC & Asthma UK Centre in Allergic Mechanisms of Asthma, Hammersmith Hospital, Du Cane Road, Imperial College London, London W12 0NN, UK; r.boyton@imperial.ac.uk

Received 13 August 2013
Revised 6 November 2013
Accepted 8 November 2013
Published Online First
20 November 2013

ABSTRACT

Background T-cell targeted peptide epitope tolerogens from grass pollen allergens may be useful in treating seasonal allergic rhinitis, but there is urgent need for optimisation of approaches from improved understanding of mechanism.

Objective We sought to identify human leukocyte antigen (HLA)-DR1-restricted epitopes from the Timothy grass pollen allergen, *Phleum pratense*, and characterise T-cell immune regulation following intranasal administration of a single, immunodominant epitope.

Methods T-cell epitopes within *P. pratense* were identified using HLA-DR1 transgenic mice and tetramer-guided epitope mapping (TGEM) in HLA-DR1-positive individuals with grass allergy. An immunodominant epitope was tested in HLA-DR1 transgenics for impact on responses to whole Phl p5 b or peptide. Microarrays and quantitative PCR were used to characterise T-cell immunity.

Results Peptide 26 (p26) was identified in HLA-DR1 transgenic mice and by TGEM analysis of HLA-DR1-positive individuals with grass allergy. p26 shows promiscuous binding to a wide range of HLA class II alleles, making it of relevance across immunogenetically diverse patients. The epitope is conserved in rye and velvet grass, making it applicable across a spectrum of grass pollen allergy. Intranasal pretreatment of mice with p26 results in significantly reduced T-cell responses. Transcriptomic array analysis in mice showed T-cell regulation in the intranasal treatment group associated with increased expression of members of the Cbl-b and Itch E3 ubiquitin ligase pathway.

Conclusions We defined an immunodominant *P. pratense* epitope, p26, with broad binding across multiple HLA class II alleles. Intranasal treatment of mice with p26 results in T-cell regulation to whole allergen, involving the Cbl-b and Itch regulatory pathway.

Key messages

What is the key question?

- To identify important immunodominant epitopes from the Timothy grass pollen allergen, *Phleum pratense*, and study T cell immune regulation following intranasal treatment using a single immunodominant epitope.

What is the bottom line?

- We describe an immunodominant *Phleum pratense* epitope, p26, with binding across multiple Human Leukocyte Antigen (HLA) class II alleles and sequence conservation with allergens from other grass species including rye grass and velvet grass making it an epitope of potential applicability across a spectrum of grass pollen allergy in the majority of individuals; intranasal treatment with this peptide results in T cell regulation to whole allergen mediated through the Cbl-b and Itch pathway.

Why read on?

- This study exploits an approach combining HLA transgenic mice, tetramer guided epitope mapping, HLA binding studies and therapeutic studies in mice to define immune targets for the development of therapeutics in pollen allergy and identify a novel molecular pathway for the induced tolerance, offering the potential for additional future drug targets.

INTRODUCTION

Allergic rhinitis and asthma triggered by grass pollen is an important cause of morbidity.¹ Many patients with these conditions express dissatisfaction with pharmacotherapy. For these patients, specific grass pollen immunotherapy, given as crude extract either subcutaneously or sublingually, is effective and

associated with long-term benefits persisting after treatment is discontinued.^{2,3} However, subcutaneous immunotherapy is associated with a risk of IgE-mediated systemic side effects. Sublingual grass pollen vaccines, while safe, require large quantities of allergen daily, usually for several years.⁴

An alternative immunotherapy involves targeting allergen-specific T cells with peptides containing immunodominant epitopes. This approach has shown promise in cat^{5,6} and bee venom⁷ allergy and avoids the immediate reactions associated with IgE



CrossMark

To cite: Till SJ, Raynsford EJ, Reynolds CJ, et al. *Thorax* 2014;**69**:335–345.

crosslinking that limit the amount of native allergen that can be given subcutaneously. We have shown, using a human leukocyte antigen (HLA)-DR1 transgenic model of allergic asthma, that treatment with a peptide derived from the cat allergen Fel d 1 inhibited allergic airway inflammation.⁸ Data from patients who received the vaccine also suggested that T-cell responses were suppressed to epitopes that were not administered, through ‘linked suppression’. The Allervax trial using Fel d 1 peptides showed improved pulmonary function in patients with reduced baseline FEV₁ and global evaluation of the subjects’ ability to tolerate cats demonstrated significant improvement.⁹ The recent trials with short-course Cat-PAD found persisting improvement in the ocular and nasal components of rhinoconjunctivitis symptoms in allergic subjects.¹⁰

In comparison to cat and bee venom, grass pollen contains a relatively large number of major allergens.¹¹ Furthermore, numerous isoallergen variants have been described within allergen families.¹² The viability of peptide vaccines for grass allergy is therefore likely to depend on identifying a relatively limited selection of immunodominant epitopes and establishing the potential for these to induce regulatory responses extending to T cells specific for other epitopes within the same and other major allergens. The need is to define immunodominant T-cell epitopes within common allergens, basing design of therapeutics

around epitopes widely recognised by different individuals through the ability to bind multiple HLA class II molecules.

We investigated the HLA-DR1-restricted CD4T-cell responses to a major group five Timothy grass pollen allergen in transgenic HLA-DR1 mice and HLA-DR1-positive donors with grass allergy. The work builds on previous studies in which efforts have been made to map pollen epitope/HLA class II patterns of immune recognition using ex vivo analysis of T-cell lines in allergic individuals.^{13–16} The novelty of our approach is in the combination of immunisation of HLA-DR1 transgenic mice to define immunodominance and characterisation of human responses by tetramer-guided epitope mapping (TGEM),^{17 18} allowing definition of immunodominant allergen epitopes and of epitopes binding across diverse HLA polymorphisms.

METHODS
Allergens and peptides

Phleum pratense extract and purified natural Phl p 5b (nPhl p 5b) were supplied by ALK Abello (Horsholm, Denmark). Recombinant Phl p 5b (rPhl p 5b) was supplied by Allergopharma (Germany).^{19 20} A Phl p 5b peptide library comprising 20-mer peptides overlapping by 12 amino acids was synthesised from the sequence of Phl p 5.0201 (Proimmune, Oxford, UK) (table 1).

Recruitment and characterisation of study subjects

Subjects with a history of seasonal allergic rhinitis²¹ for a minimum of 2 years during the UK grass pollen season were recruited from the Royal Brompton Hospital Allergy Clinic or through advertisement (table 2). All subjects had skin prick tests to common inhalant allergens: *Dermatophagoides pteronyssinus*, 6-grass pollen mix, Timothy grass, *Alternaria alternata*, three tree mix, *Betula verrucosa*, cat dander, dog dander, horse dander, and mugwort in the presence of positive (histamine) and negative (diluent) controls (Soluprick, ALK Abello, Horsholm). Subjects showed sensitisation to Timothy grass (*P pratense*), evidenced by a positive skin test response (wheal diameter >3 mm larger than elicited by diluent control) and elevated *P pratense* specific IgE. Non-allergic controls were asymptomatic with negative skin prick tests to common aeroallergens including *P pratense* and normal levels of total and allergen-specific IgE. All subjects and controls were HLA-DRB1*0101 positive. The study was approved by the Royal Brompton and Harefield NHS Trust Ethics Committee (06/Q0404/43) and informed written consent was obtained (table 2).

Transgenic mice

HLA-DR1 (DRA*0101/DRB1*0101) Aβ° transgenic mice have been described previously²²; 8–14-week-old mice were used. Animal procedures were approved by the UK Home Office. UK Home Office regulations for animal welfare, based on the Animals (Scientific Procedures) Act 1986, were strictly observed.

HLA-DR1-restricted T-cell responses to Phl p 5b protein and overlapping peptide panel

HLA-DR1-restricted T-cell lines were made against Phl p 5 protein. HLA-DR1-tg/Aβ° mice (n=6) were footpad immunised with 25 µg nPhl p 5b in Complete Freund’s Adjuvant (CFA). Popliteal draining lymph nodes (DLNs) were harvested at day 10 and T-cell lines generated through two restimulations against nPhl p 5 protein (25 µg/mL) in the presence of irradiated mouse splenocytes as antigen presenting cells; this was repeated on three occasions and representative data from one of these are shown. T-cell proliferation in response to nPhl p 5 and 20-mer

Table 1 Amino acid sequence of Phl p 5b 20-mer overlapping peptide sequences used for epitope mapping studies

Phl p 5b peptide	Sequence
1	DAGYAPATPAAAGAAAGKAT
2	PAAAGAAAGKATTEEQKLI
3	GKATTEEQKLIEDINVGFKA
4	KLIEDINVGFKA AVAAASV
5	GFKA AVAAASVPAADKFKT
6	AASVPAADKFKTFEAAFTSS
7	KFKTFEAAFTSSSKAAAKA
8	FTSSSKAAAKAPGLVPKLD
9	AAKAPGLVPKLD AAVSVAYK
10	PKLDAAVSVAYK AAVGATPE
11	VAYK AAVGATPEAKFDSFVA
12	ATPEAKFDSFVASL TEALRV
13	SFVASL TEALRVIA GALEVH
14	ALRVIA GALEVH AVKPVTEE
15	LEVHAVKPVTEEPGM AKIPA
16	VTEEPGM AKIPAGELQIIDK
17	KIPAGELQIIDK IDAAFKVA
18	IIDK IDAAFKVAATAAATAP
19	FKVAATAAATAPADDKFTVF
20	ATAPADDKFTVF EAAFNKAI
21	FTVF EAAFNKAIKESTGGAY
22	NKAIKESTGGAYDTYKCIPS
23	GGAYDTYKCIPSLEAAVKQA
24	CIPSLEAAVKQAYAAATVAAA
25	VKQAYAAATVAAAPQVKYAVF
26	VAAAPQVKYAVFEAALT KAI
27	YAVFEAALT KAITAMSEVQK
28	TKAITAMSEVQKVSQPATGA
29	EVQKVSQPATGAATVAAGAA
30	ATGAATVAAGAAATTAAGAAS
31	AGAATTAAGAASGAATVAAG
32	GAASGAATVAAGGYKV

Each peptide overlaps by 12 amino acids.

Table 2 Clinical characteristics of study participants

Volunteer	M/F	Age (years)	HLA-DRB1 alleles	SPT to <i>Phleum pretense</i> (mm)*	SPT to other allergens	IgE to <i>Phleum pretense</i> (IU/mL)	Total IgE (IU/mL)
Allergic	7:4						
URM 018	M	29	1:15	6	Nil	1.49	3.0
URM 022	F	26	1:10	10	D	100.0	760.0
URM 028	M	34	1:4	6	D, M	9.66	26.0
URM 031	M	49	1:4	9	C, D, H	5.70	229.0
URM 039†	F	42	1:14	13	Nil	9.21	15.0
URM 044	M	45	1:4	9	A, C, D	2.98	23.0
URM 067	M	41	1:13	6	B, C, D, M	11.8	36.0
URM 068	F	36	1:3	11	B, HDM	9.13	107.0
URM 069	M	58	1:15	13	B, C, D, HDM	7.98	89.0
URM 074	F	45	1:3	10	B, D	23.4	73.0
URM 087	M	38	1:1502	7	B, M	15.4	123.0
Non-allergic	6:4						
URM 095	M	38	1:3	0	Nil	<0.35	53.0
URM 213	M	41	1:7	0	Nil	<0.35	5.0
URM 222	F	48	1:14	0	Nil	<0.35	25.0
URM 302	M	25	1:7	0	Nil	<0.35	7.0
URM 304	M	37	1:3	0	Nil	<0.35	35.0
URM 306	M	47	1:7	0	Nil	<0.35	26.0
URM 308	M	27	1:15	0	Nil	<0.35	15.0
URM 318	F	24	1:4	0	Nil	<0.35	4.0
URM 321	F	29	1:3	0	Nil	<0.35	18.0
URM 322	F	29	1:12	0	Nil	<0.35	3.0

*Size of wheal defined as (D₁/d_p)/2, where D₁ is the longest diameter and d_p is the diameter mid-orthogonal to D₁.
†Currently undergoing immunotherapy.
There is no significant difference in age between individuals with and without allergy in the study groups; mean age (±SEM), allergic 40 (3) years; non-allergic 34.5 (3) years (age: allergic vs non-allergic; p=0.1597). An unpaired t test was used to determine significant differences between groups. Statistically significant differences were defined as a p value of less than 0.05. The HLA-DRB1 genotype was determined by PCR-based HLA genotyping; HLA-DRB1*0101 patients were selected as a study group on the grounds that this is a common allele in the UK population and facilitated matched studies in the HLA-DRB1*0101 transgenic mouse model. Entries against each patient indicate that they are DRB1*0101, with the other allele carried by them indicated after the colon.
A, *Alternaria alternata*; B, *Betula verrucosa*; C, cat hair; D, dog hair; H, horse dander; HLA, human leukocyte antigen; HDM, house dust mite, *Dermatophagoides pteronyssinus*; M, mugwort; SPT, skin prick test.

overlapping peptides (table 1) spanning Phl p 5b at 50 µg/mL were assessed by addition of 1 µCi/well ³H-thymidine during the final 18 h of a 72 h culture. Data are presented as the mean from triplicate wells minus the mean from triplicate wells containing cells plus medium.

Tetramer-guided epitope mapping

TGEM^{17 18} was used to identify epitopes within Phl p 5b. The 32 overlapping peptides in pools were used to stimulate T-cell cultures from two individuals with grass allergy (table 2, URM018, URM031). Cells were cultured with peptide pools for 14 days prior to tetramer staining. Purified soluble DRA1*0101/DRB1*0101 molecules were produced from Schneider cells and loaded with peptide pools to generate tetramers. Tetramer-positive cultures staining with these tetramers were restained using HLA-DR1 tetramers loaded with each peptide from the positive pool.

Isolation and culture of PBMCs for tetramer analysis

Freshly isolated peripheral blood mononuclear cells (PBMCs) from DRB1*0101-allergic subjects and controls were cultured at 2×10⁶ cells/mL in RPMI-1640 (Invitrogen, Life Technologies, UK) containing, L-glutamine (Sigma, UK), penicillin/streptomycin (Sigma) and 10% human AB serum (PAA Laboratories GmbH, Pasching, Austria) with 20 µg/mL Phl p 5b peptide 26 (p26) for

14 days. Recombinant human interleukin (IL)-2 (1 ng/mL) was added at day 7 (Proleukin, Novartis, UK).

Purified soluble DRA1*0101/DRB1*0101 molecules were loaded to generate HLA-DR1 tetramer with Phl p 5 p26 or an irrelevant peptide (Phl p 1, p26) as a control tetramer.

At day 14, T cells were stained with anti-CD3-FITC, anti-CD4-PE-Cy5 (BD Pharmingen, Oxford, UK), PE-conjugated-DRB1*0101 tetramers and analysed by flow cytometry. Cultured T cells were incubated with 10 µg/mL tetramer at 37°C for 1 h and costained with anti-CD3-FITC and anti-CD4-PE-Cy5 (BD Pharmingen) for 30 min. Cells were gated on live lymphocytes according to forward and side scatter and the CD3 CD4 positive population to detect the p26-specific T-cell population and data acquired on a FACSCalibur (BD Biosciences, Oxford, UK).

For ex vivo phenotyping of tetramer-positive PBMCs, cells were gated on the tetramer-positive CD4 population, then analysed within this gate for expression of CD45RA (Clone L48, BD Pharmingen), CCR4 (Clone 205410, R&D Systems), CCR3 (Clone 61828.111, R&D Systems), CXCR1 (Clone 5A12 BD, Pharmingen), CCR5 (Clone 45523, R&D Systems), CXCR3 (Clone 49801, R&D Systems), CCR7 (Clone 3D12, eBiosciences), CD62L (Clone DREG-56, eBiosciences) and CD38 (Clone 240742, R&D Systems).

Peptide binding to HLA-DR and HLA-DQ molecules

HLA-DR and HLA-DQ molecules were purified from homozygous Epstein-Barr virus cell lines by affinity chromatography with

Thorax: first published as 10.1136/thoraxjnl-2013-204324 on 20 November 2013. Downloaded from http://thorax.bmj.com/ on March 20, 2024 by guest. Protected by copyright.

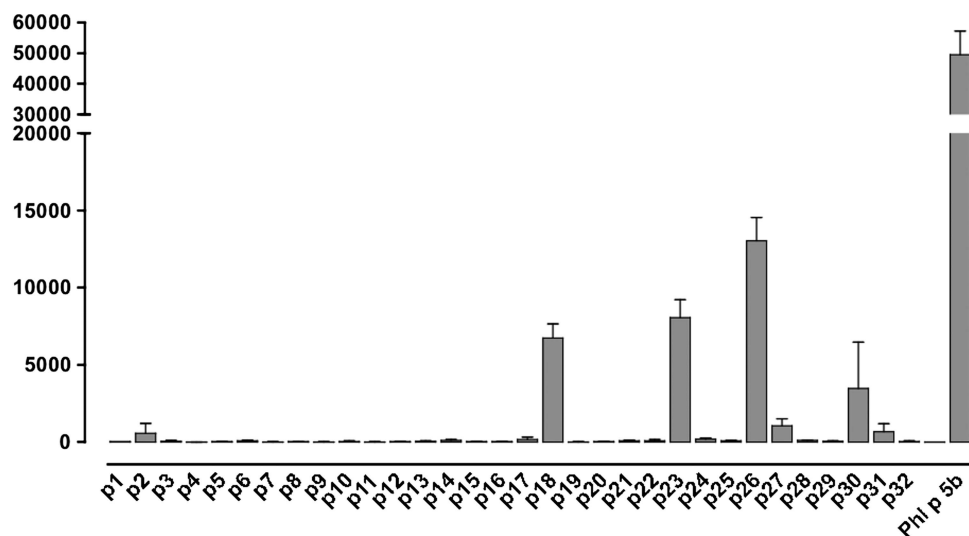


Figure 1 Human leukocyte antigen (HLA)-DR1 restricted T-cell responses to Phl p 5b protein and Phl p 5b 20-mer overlapping peptide panel. HLA-DR1-restricted T-cell lines were made against nPhl p 5 protein. HLA-DR1-Tg/Ab^o mice (n=6) expressing human HLA-DR1 were immunised with nPhl p 5b emulsified in Complete Freund's Adjuvant. Draining lymph node cells were harvested at day 10 and T-cell lines generated against Phl p 5 protein. T-cell responses of lines were assessed after 72 h in a ³H-thymidine incorporation assay against Phl p 5 protein and 20-mer overlapping peptides spanning Phl p 5b, each at 50 µg/mL. The y-axis indicates T-cell proliferation in response to peptide, measured in Δcpm of ³H-thymidine incorporation (ie, the difference between the mean count from triplicate wells in the presence or absence of peptide). The x-axis indicates the identity of the tested Phl p 5b peptides that were assayed for the ability to elicit a T-cell response. This assay was repeated on three separate occasions. Epitopes p18, p23 and p26 were confirmed by priming with the specific peptides (data not shown).

L243^{23–25} (HLA-DR) and SPVL3 (HLA-DQ).^{23–24} Binding to HLA-DR and HLA-DQ was assessed by competitive ELISA,^{23–25} evaluating the peptide concentration preventing binding of 50% of the labelled peptide (IC₅₀). Data were expressed as relative affinity: ratio of the half maximal inhibitory concentration (IC₅₀) of the peptide to the IC₅₀ of the reference peptide, which is a high

binder to the HLA class II molecule. Unlabelled forms of the biotinylated peptides were used as reference peptides. Their sequences and IC₅₀ values were: HA 306–318 (PKYVKQNTLKLAT) for DRB1*0101 (2 nM), DRB1*0401 (14 nM), DRB1*1101 (72 nM); YKL (AAYAAKAAALAA) for DRB1*0701 (5 nM), A3 152–166 (EAEQLRAYLDGTGVE) for DRB1*1501 (41 nM), MT 2–16 (AKTIAYDEEARRGLE) for DRB1*0301 (71 nM), B1 21–36 (TERVRLVTRHIYNREE) for DRB1*1301 (46 nM), CTP 427–441 (VHGFYNPAVSRIVEA) for DRB1*0901 (23 nM), TFR141–155 (TGTIKLLNENSYPVR) (363 nM) for DRB1*1202, TFR607–620 (LNLDYERYNSQLLS) for DRB1*1502 (4 nM), B7150–164 (LNEDLRSWTAADTAA) for DQ6 (DQA1*0103/DQB1*0603) (37 nM) and DQB45–57 (ADVEVYRAVTPLGPPD) for DQ8 (DQA1*0301/DQB1*0302) (98 nM).

Table 3 Sequence alignment of the in silico defined epitope sequence (YAVFEAALT) within Phl p 5b peptide 26 (p26), from *Phleum pratense* and other commonly occurring grass species allergens in the UK

Grass allergen	p26 epitope sequence	Percentage sequence alignment
<i>Phl p 5.0201</i>	YAVFEAALT	–
<i>Dac g 5 isoallergen 2</i>	YAVFEAALT	100
<i>Dac g 5 isoallergen 1</i>	YAVFEAALT	100
<i>Dac g 5</i>	YAVFEAALT	100
<i>Lol p VA</i>	YAVFEAALT	100
<i>Lol p 5C</i>	YAVFEAALT	100
<i>Hol I 5.0201</i>	YAVFEAALT	100
<i>Hol I 5b</i>	FAVFKAAALT	77
<i>Poa p 5.0201</i>	FAVFKAAALT	77
<i>Phl p 5.0101</i>	YTVFETALK	66
<i>Hol I 5.0101</i>	YTVFETALK	66
<i>Lol p 5.0101</i>	YTVSETALK	55

The TEPITOPE-predicted HLA-DR1-restricted epitope within Phl p 5b-derived p26 (YAVFEAALT) was identified in other grass species. Sequences were aligned using the CLUSTAL 2.0.12 multiple sequence alignment programme available via the European Bioinformatics Institute server: (<http://www.ebi.ac.uk/Tools/services/web/toolform.ebi?tool=clustalw2>). The Phl p isoallergen investigated in this study is shown in bold. The table highlights the percentage identity of the epitope sequences following calculation of pairwise sequence alignment scores when compared with Phl p 5.0201. *Dac g*, *Dactylis glomerata*; *HLA*, human leukocyte antigen; *Hol I*, *Holcus lanatus*; *Lol p*, *Lolium perenne*; *Phl p*, *Phleum pratense*; *Poa p*, *Poa pratensis*.

Intranasal peptide treatment and T-cell assays
HLA-DR1-tg/Ab^o mice (seven per group) were treated with intranasal phosphate-buffered saline (PBS) or Phl p 5 p26 (100 µg) in 20 µL on days 1, 2 and 3. On day 21 mice were footpad primed with 25 µg of whole rPhl p 5b protein, Phl p 5b p26, or whole rPhl p 1 protein as an emulsion with CFA (Sigma-Aldrich, UK). At day 31, single-cell suspensions were prepared from DLNs. Cells were cultured in triplicate with doses of whole rPhl p 5b protein, p26, or whole rPhl p 1 protein for 3 days. 1 µCi/well of ³H-thymidine was added 18 h before termination of 72 h cultures. Data are represented as the mean from triplicate wells minus the mean from triplicate wells containing cells plus medium without antigen.

Microarray and real-time PCR analysis
HLA-DR1-tg/Ab^o mice received intranasal challenge with PBS or rPhl p 5b p26 (100 µg) on days 1, 2 and 3. On day 21 mice were primed with 25 µg of p26/CFA. At day 31, DLN suspensions were established as cultures with p26 (50 µg/mL). At 72 h cells were harvested and lysed for RNA analysis. cDNA was

Table 4 Affinity of p26, 18 and 23 binding to HLA-DR and HLA-DQ molecules

	DR1	DR3	DR4	DR7	DR9	DR11	DR13	DR1501	DR1502	DQ6	DQ8
p26	14%	30%	20%	25%	1%	14%	16%	27%	2%	16%	21%
p18	1	<i>83</i>	5	1	0.3	14	<i>38</i>	9	1	16	267
p23	11	nd	0.3	<i>32</i>	nd	3	>456	<i>42</i>	2000	nd	nd
p23	1	nd	0.4	8	nd	2	>456	<i>37</i>	4	nd	nd

Results are expressed as a relative binding ratio obtained by dividing the IC₅₀ of allergen peptide by that of a reference peptide that binds strongly to the HLA molecule. Lower numbers correspond to a higher binding affinity. Numbers in bold (ratio of 20 or less) = high affinity binding; numbers in italic (ratio 20–100) = moderate binding affinity. Each peptide—major histocompatibility complex combination was evaluated in two independent experiments. Percentages are the frequency of the HLA-DR or HLA-DQ alleles in a Caucasian population calculated from allele frequency net (<http://www.allelefrequencies.net>): a database and online repository for immune gene frequencies in worldwide populations. HLA, human leukocyte antigen; nd, not done.

synthesised from 700 ng RNA (RT² First strand kit, Qiagen, UK) and sample quality assessed by Mouse RT² RNA QC PCR Array (PAMM-999A, Qiagen). cDNA samples were assayed by PCR array (RT² Profiler PCR array, PAMM-074Z, Qiagen). Plates were run on a Stratagene Mx3000p RT PCR machine for

10 min at 95°C followed by 40 cycles of 15 s at 95°C and 1 min at 60°C. Data were analysed using Partek Genomics Suite V.6.6 and significance determined using analysis of variance. For real-time PCR, cDNA was synthesised from 500 ng RNA using SuperScript III reverse transcriptase (Invitrogen, Life

Figure 2 Tetramer-guided epitope mapping identifies peptide 26 (p26) as a human leukocyte antigen (HLA)-DR1-restricted CD4T-cell epitope of Phl p 5b. A panel of overlapping 20-mer peptides spanning Phl p 5b was synthesised. Peptides were divided into pools and loaded onto PE-conjugated HLA-DR1 tetramers. Isolated CD4 T cells were cultured with adherent cells in the presence of the pooled peptides for 7 days before adding interleukin 2. Between days 12 and 14 the cells were stained with anti-CD4 and the pooled peptide tetramers (A). Positive tetramer staining was identified by flow cytometry. Individual peptide tetramers were generated and staining repeated (B). In this representative example, positive labelling is seen with HLA-DR1 tetramers loaded with p26 of Phl p 5b in patient URM031.

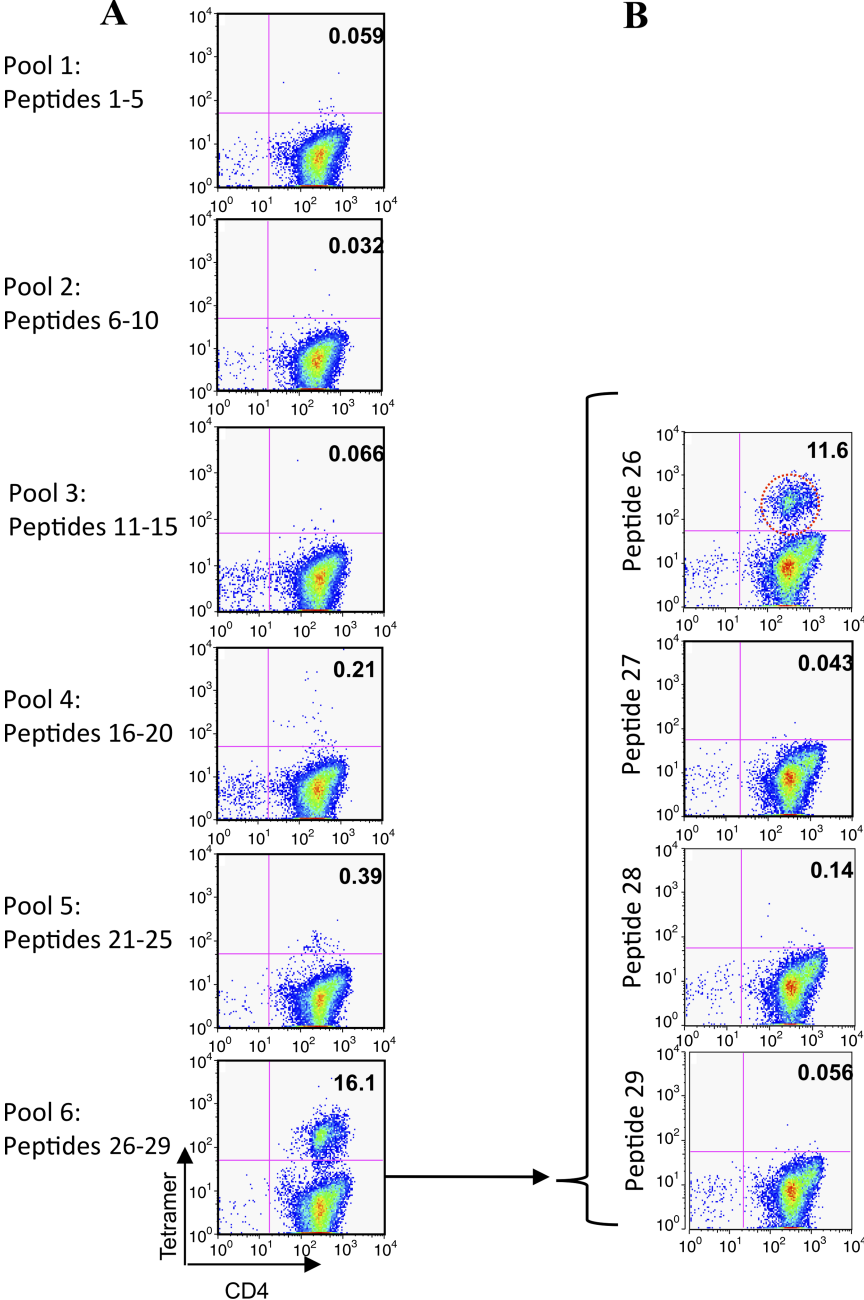
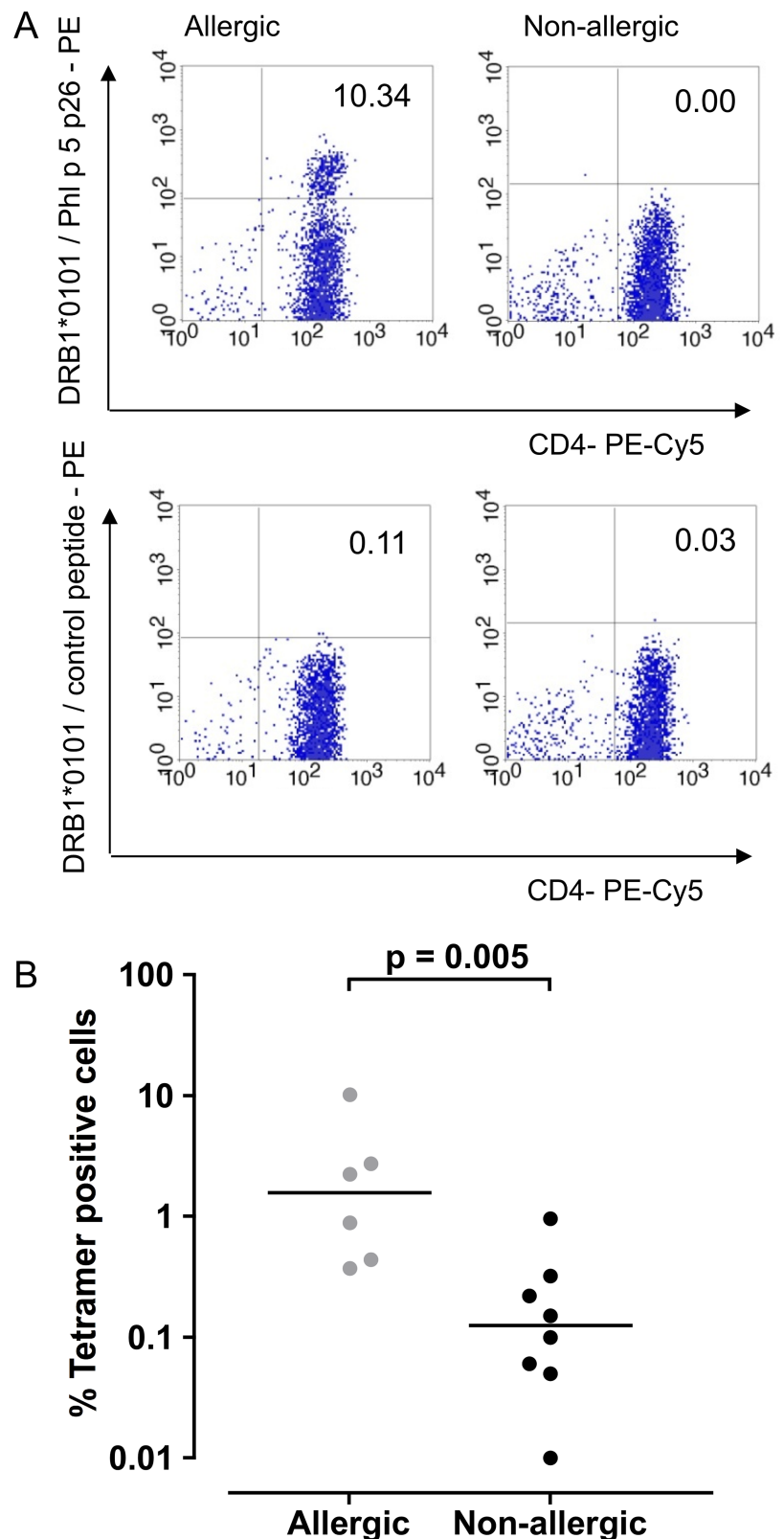


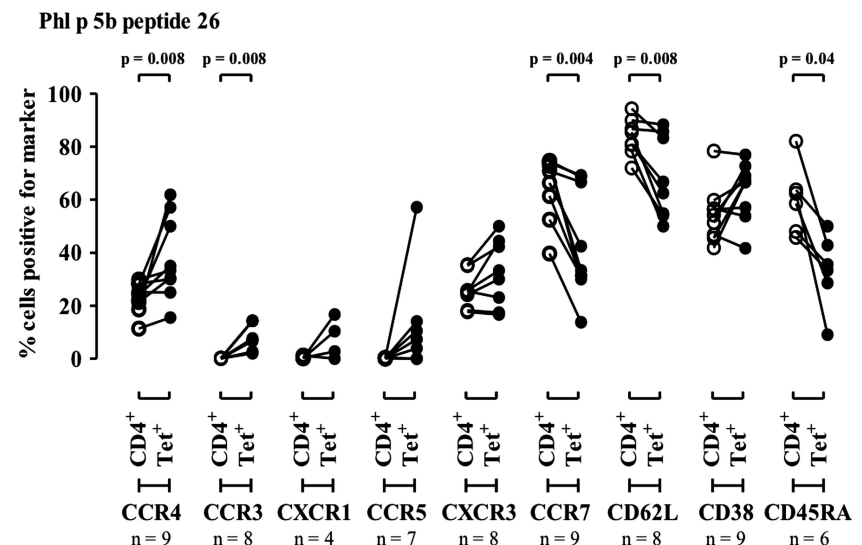
Figure 3 Phl p 5b peptide 26 (p26) human leukocyte antigen (HLA)-DR1 tetramer-positive populations in study participants with and without allergy. Whole peripheral blood mononuclear cells isolated from HLA-DR1-positive individuals with grass allergy and seasonal allergic rhinitis, and healthy controls without allergy were cultured with Phl p 5b p26. At day 14, cells were labelled with anti-CD3-FITC, anti-CD4-PE-Cy5 antibodies and PE-conjugated-HLA-DR1 tetramer loaded with p26 (A, top panel) or control tetramer loaded with irrelevant peptide (A, bottom panel) and analysed by flow cytometry. Cells were gated on live lymphocytes according to forward and side scatter and the CD3 CD4 positive population to detect the p26-specific T-cell population. The percentage of p26 tetramer-positive cells for subjects with and without allergy is shown (B). Statistical analysis was performed using the Mann–Whitney U test (bars indicate median values). Samples were processed during the grass pollen season, 2010 (subjects with allergy, n=6; healthy controls without allergy, n=8).



Technologies). Real-time PCR was carried out in 20 μ L containing 0.5 μ L cDNA, 10 μ L 2XTaqMan Universal PCR Master Mix (Applied Biosystems, USA) and gene-specific probe and primers (Applied Biosystems: transforming growth factor β (TGF β) inducible early gene 1 (TIEG-1) Mm00449812_m1, Itch Mm00492683_m1, Cblb Mm01343092_m1, Egr3 Mm00516979_m1; Sigma: Foxp3 Forward 5'-ATAGTTCCTTCCCAGAGTCTTCC, Reverse

5'-ATGGTAGATTTCATTGAGTGTCTC, Probe 5'-[FAM]CACCTATGCCACCCTTATCCGATGG[TAM]). PCR reactions were run in triplicate and CT values obtained using a MX3000P real-time PCR machine (Stratagene, USA) normalising to glyceraldehyde-3-phosphate dehydrogenase. Student's t test was used to determine significance between groups. Statistically significant differences were defined as p values of less than 0.05.

Figure 4 Effector memory phenotype of Phl p 5 peptide 26 (p26) tetramer-positive CD4 T cells from subjects with allergy. Peripheral blood mononuclear cells isolated from subjects with allergy were labelled immediately ex vivo with Phl p 5b peptide 26 tetramer. This was followed by cell surface staining with FL-1 conjugated cell surface marker antibodies and an anti-CD4PE-Cy5. The expression of a FL-1 conjugated cell surface marker antibody was compared on total CD4^{high} and CD4 human leukocyte antigen (HLA)-DR1 Phl p 5 p26 tetramer-positive cells from HLA-DR1-positive individuals with grass allergy. The reduction in mean fluorescence intensity for CD62L and CD45RA staining of tetramer-positive cells is indicated in online supplementary figure S1. Statistical analysis was performed using a Wilcoxon signed rank test. Samples were processed during the grass pollen season, summer 2010.



RESULTS

HLA-DR1 restricted T-cell response to a Phl p 5b peptide panel identifies immunodominant epitopes of Phl p 5b

Since most humans are heterozygous with respect to the HLA region and also will present peptide to CD4 T cells via multiple HLA class II isotypes, definition of common peptide-major histocompatibility complex combinations can be challenging. We addressed this through a combination of HLA transgenic, HLA-binding studies, TGEN and patient T-cell responses. HLA-DR1-tg/Ab^o mice were immunised with nPhl p 5b and T-cell lines made against nPhl p 5b protein. T-cell responses of these lines were tested against 20-mer overlapping peptides encompassing the Phl p 5b sequence (table 1). Peptides p18, p23 and p26 together with whole allergen elicited strong T-cell responses (figure 1). p26 shows sequence conservation with allergens from other grass species, including rye grass and velvet grass, making it of applicability across a spectrum of grass pollen allergy (table 3).

Immunodominant epitopes of Phl p 5b bind diverse HLA class II alleles

Epitopes, p18, p23 and p26 were analysed for binding to common HLA-DR and DQ alleles (table 4). p26 is unusual in its ability to bind with moderate to high affinity to extremely diverse HLA class II sequences, irrespective of isotype with the exception of HLA-DQ8. Note, however, that HLA-DQ8 would generally be carried on an HLA-DR4 haplotype, so that these individuals could in any case present the peptide through HLA-DR. The epitope also binds HLA-DRB1*1502, the more common DR15 variant in Asian populations, suggesting that the relevance of the epitope would extend beyond Caucasian patients.

TGEN confirms Phl p 5b p26 as an HLA-DR1-restricted T-cell epitope

Seven pools of peptides were used to stimulate CD4 T cells from two HLA-DR1-positive subjects with grass allergy (table 2,

URM018, URM031). Twelve days later, cells were analysed using HLA-DR1 tetramers loaded with each peptide pool; representative data are shown from donor URM031. Cells stimulated with pool 6 (p26–29) gave positive staining, with a weaker signal for pool 5 (p21–25) (figure 2A). On day 14, HLA-DR1 tetramers loaded with individual tetramers from pool six were used to stain the cells, identifying HLA-DR1-restricted p26 (pool 6) (figure 2B).

Phl p 5b p26 HLA-DR1 tetramer-positive populations identified individuals with grass allergy

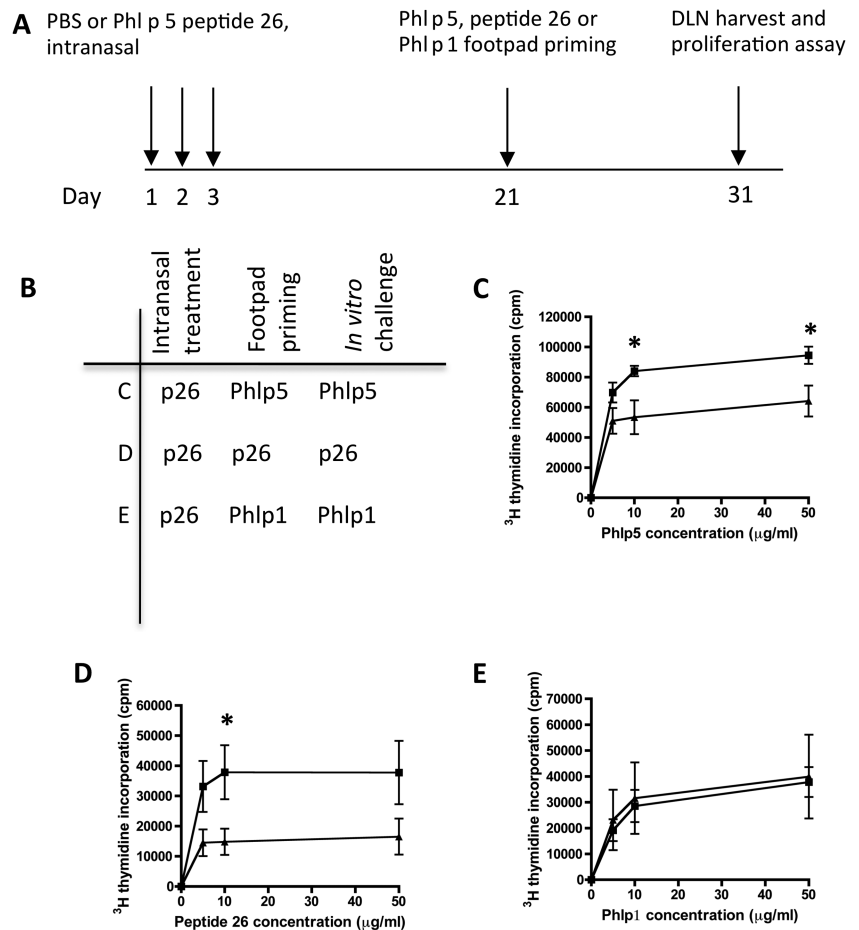
HLA-DR1-restricted CD4 T-cell responses to p26 were examined in six of the subjects with grass allergy and eight subjects without grass allergy, described in table 2 (figure 3A,B). Subjects with grass allergy (n=6) showed higher numbers of HLA-DR1 p26 tetramer positive CD4 T cells than controls without allergy (n=8) (p<0.01).

To assess the phenotype of p26-reactive donor cells, PBMCs from subjects with allergy were labelled ex vivo with p26/DR1 tetramer and costained for CD4, CXCR1, CCR3, CCR4, CXCR5, CCR7, CD62L, CD38 and CD45RA (figure 4). Tetramer-positive cells are of an effector memory type: CD45RA^{lo}, CD62L^{lo}, CCR4^{hi}, CCR3^{hi}. In line with this, patient responses to p26 encompass an IL-5 response, but no detectable interferon γ (data not shown).

Intranasal treatment of mice with Phl p 5b p26 results in reduced response to p26 and whole rPhl p 5b protein

Intranasal administration of p26 substantially reduces the subsequent T-cell response to immunogenic challenge with p26 (figure 5). Intranasal treatment with just p26 is sufficient to significantly reduce the recall response to immune challenge with whole protein (figure 5C) or with p26 itself (figure 5D). The induction of immune regulation is antigen specific since intranasal administration of p26 has no effect on priming and challenge with another Timothy antigen, Phl p 1 (figure 5E).

Figure 5 Intranasal treatment with peptide 26 (p26) results in reduced T-cell proliferation to rPhl p 5b and p26. (A, B) Mice were treated intranasally with phosphate-buffered saline (PBS, filled squares) or p26 (filled triangles) at days 1, 2 and 3 and footpad primed at day 21 with (C) rPhl p 5 protein (each group, n=7), (D) p26 (each group, n=7) or (E) whole Phl p 1 protein (each group, n=5). Draining lymph nodes were harvested at day 31 and ^3H thymidine incorporation measured for protein or peptide as shown. An unpaired t test was used to determine significant differences between groups. Statistically significant differences were defined as p values of less than 0.05 (*p<0.05).



Increased expression of regulatory genes and decreased expression of Th2 inflammatory genes in p26-induced immune regulation

We then explored the transcriptomic pathways underlying p26-induced immune regulation by cDNA microarray analysis of peptide re-stimulated DLN cultures from peptide-treated or control HLA-DR1 transgenics (figure 6). The heatmap shows key genes differentially expressed following in vitro p26 re-stimulation of DLN cells. Intranasal peptide treatment prevents the full development of effector function: *il4*, *il2ra* are not upregulated, nor are *Cd40*, *Fas* and *FasL*. This is accompanied by an increase in transcripts that define a more regulatory response, including upregulation of *Jak3*, *Tgfb1*, *Cbl-b*, *Egr3* and *Rnf128*.^{26 27} The most highly upregulated transcript in the dataset, *Itga-1* (CD49a), is the α 1 chain of VLA-1. It is likely to have a role in regulation of cell trafficking to sites of allergen exposure.

Cbl-b and Itch are in a pathway mediating p26-induced T-cell regulation

Changes in regulation-associated transcripts were confirmed by quantitative PCR (qPCR) (figure 7). Transcriptional changes in *Itch* and *Cbl-b* were noteworthy since they are considered gatekeepers regulating a key peripheral tolerance pathway in the energy and autoimmunity.^{26 27} We therefore investigated further the transcriptional changes to these genes and other changes potentially feeding through this pathway into changes at the *Foxp3* promoter, including those to *TIEG-1*.²⁷ Individual qPCR assays on DLN cells from p26-treated mice confirmed significant upregulation of *Cbl-b*, *Itch*, *TIEG-1*, *Egr-3* and *Foxp3*.

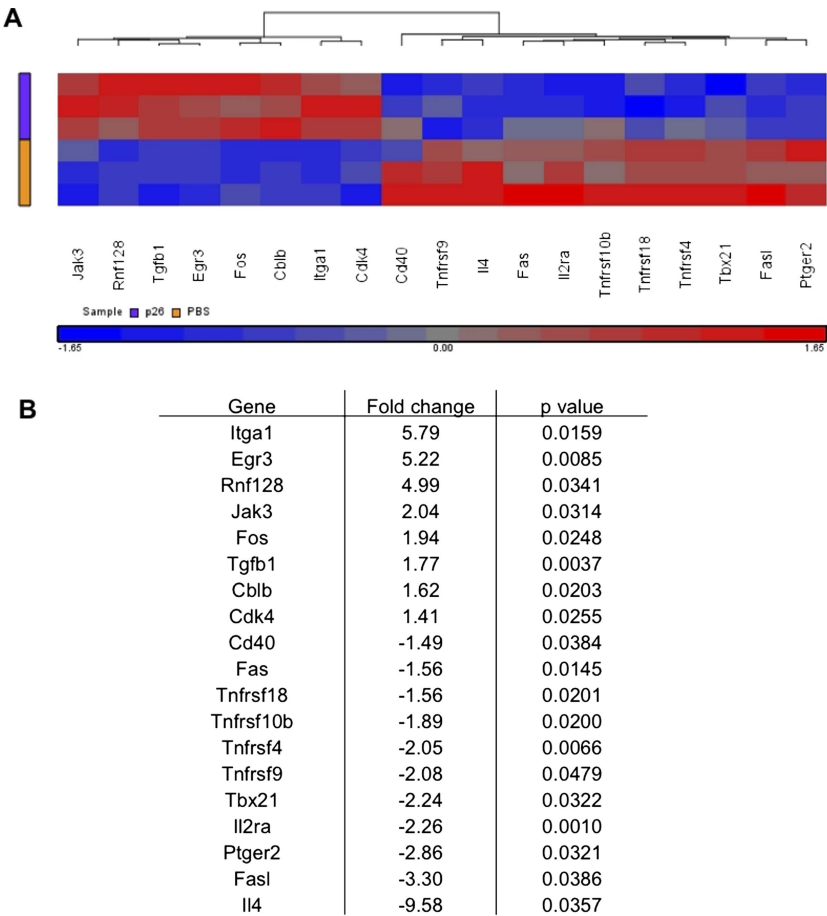
DISCUSSION

There may be therapeutic value in the wider use of allergen peptide immunotherapy to regulate CD4 T cells without the risk of IgE binding.²⁸ Grass pollens encompass the large numbers of allergens and isoallergens, making it important to identify T-cell grass pollen epitopes conserved across diverse grass species as a step towards defining the minimal antigenic requirements for clinical tolerance to whole grass pollen. Previously, an HLA-DR4-restricted epitope was identified in rye grass Lol p 1.²⁹ Identification of T-cell reactive regions within group five allergens of *P pratense* has been performed using Phl p 5 T cell clones.^{8 30} A drawback of the latter studies is that they included small numbers of subjects of various HLA-DR haplotypes. As a result it is not clear if and how the identified T-cell reactive regions can or should be extrapolated to larger subject populations.

Screening T-cell lines from Phl p 5b immunised mice, we identified responses to p18, p23 and p26. Of these, p26 is conserved across diverse grass pollens, including rye grass and velvet grass. A US national survey of individuals on prevalence of 19 allergen-specific IgEs showed the response to rye grass to be the most common of allergens tested.³¹ While evidence exists to support the importance of Phl p 5, as we have used here, it is possible that group I are also clinically important and that mixed peptide cocktails may be used for therapy.

The reductionism of HLA class II transgenics to identify the presenting class II heterodimer with TGM analysis of human PBMCs offers a powerful approach to epitope characterisation. Tetramers loaded with the individual peptide revealed a population responding to p26. Further comparison showed a difference in the number of p26 tetramer-positive cells expanded in

Figure 6 Intranasal treatment of peptide 26 (p26) is associated with increased expression of regulatory genes and decreased expression of T helper 2 inflammatory genes. Mice were treated intranasally with phosphate-buffered saline (PBS) (n=6) or p26 (n=6) before footpad immunisation and in vitro p26 stimulation of draining lymph node (DLN) cells. (A) A heat map shows the key genes differentially expressed following in vitro p26 stimulation of DLN cells where fold change is greater than ± 1.4 with a p value of <0.05 by analysis of variance. (B) Fold change values and p values for each of these differentially expressed genes are shown.



individuals with allergy compared with those without allergy. While this study was based on cells expanded in culture ex vivo, our directly ex vivo TGEM data on individuals with allergy suggests frequencies in the range 1/60 000–1/300 000 T cells (data not shown). Whereas it can be hard to generalise from analysis of CD4 epitopes in a limited sample of individuals to applicability in a large outbred population expressing diverse HLA class II alleles, we show that p26 is likely to be of broad relevance due to its ability to bind multiple HLA class II heterodimers. Sette and colleagues characterised antigen-dominant regions of Phl p antigens predicted to bind diverse HLA alleles, a prediction we confirm empirically.³²

Our microarray analysis pinpoints pathways defining a transcriptomic signature of regulation. At the top of this cascade stand changes to the transcription factor Egr-3, upregulated in

peptide-treated mice. Overexpression of Egr-3 has been associated with upregulation of Cbl-b, inhibition of T-cell activation and consequent tolerance.³³ Conversely, Egr-3-null mice show downregulation of Cbl-b and are resistant to peptide-induced tolerance. The E3 ligase, Itch, named for the itchy skin allergic phenotype with autoimmunity and interstitial lung disease in knockout mice, is a regulator of peripheral tolerance.²⁷ Cbl-b, another ubiquitin ligase controlling tolerance, was also upregulated in this biosignature (figures 6 and 7). This ubiquitin ligase is proposed to impact on the immunity/anergy switch point at several levels through interactions with different target substrates. Itch-mediated ubiquitination re-routes PLC- γ 1 and PKC- θ to the lysosome for degradation, with the effect of curtailing the immune synapse.³⁴ In general, the enhanced re-sorting and degradation of immune signalling proteins

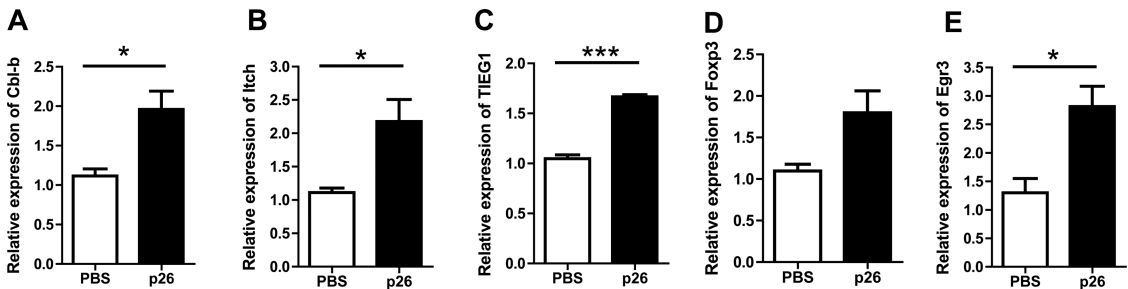


Figure 7 Intranasal treatment of peptide 26 (p26) results in increased expression of key targets in the Itch-Foxp3-transforming growth factor β inducible early gene 1 (TIEG-1) pathway. (A) Cbl-b, (B) Itch, (C) TIEG-1, (D) Foxp3 and (E) Egr3 are upregulated in p26-treated (n=3) compared with phosphate-buffered saline (PBS)-treated (n=3) mouse draining lymph node cells by real-time PCR. Student's t test was used to determine significant differences between groups. Statistically significant differences were defined as p values less than 0.05 (*p<0.05, ***p<0.0005).

mediated by E3 ubiquitin ligases is thought to cause an inability to maintain an intact immune synapse in stimulated T cells. Furthermore, there may be a more direct effect on TGF β -induced Foxp3 expression as Itch knockouts show impairment of this pathway, presumably via its targeting by monoubiquitination of TIEG-1.²⁷ The resulting response is a discrete effector rather than null response, evidenced by upregulation of Jak-3, which associates with the common γ chain, γ_c , pairing with ligand-specific subunits to supply receptors for IL-2, IL-4, IL-7, IL-9, IL-15 and IL-21.³⁵

Itga-1 (CD49a), the α 1 chain of VLA-1, was very highly upregulated in mice treated with intranasal p26. This is noteworthy as a gene expression profiling study of human T regulatory type 1 (Tr1) cells by the Roncarolo group pinpoints CD49b and LAG-3 coexpression as a defining signature, allowing therapeutic Tr1 cells to be tracked in vivo.³⁶

It should be tractable to use these approaches demonstrated here for high-throughput mapping of immunodominant epitopes from allergens and the design of optimal tolerogenic regimens. We acknowledge that the present article does not extend from exploring the mechanism of immune regulation to in vivo evaluation of therapeutic efficacy. Further studies will be needed to determine if it is possible to manipulate tolerance using therapeutic drug agonists of the E3 ubiquitin ligases, as under consideration in other settings including oncogenesis.^{37 38}

Author affiliations

¹Department of Asthma, Allergy and Respiratory Science, Division of Asthma, Allergy & Lung Biology, MRC & Asthma UK Centre in Allergic Mechanisms of Asthma, King's College London, London, UK

²Allergy and Clinical Immunology, National Heart and Lung Institute, MRC & Asthma UK Centre in Allergic Mechanisms of Asthma, Imperial College London, London, UK

³Lung Immunology Group, Section of Infectious Diseases and Immunity, Department of Medicine, MRC & Asthma UK Centre in Allergic Mechanisms of Asthma, Imperial College London, London, UK

⁴Department of Respiratory Medicine, Royal Brompton & Harefield NHS Foundation Trust, London, UK

⁵Commissariat à l'Energie Atomique (CEA), Saclay, France

⁶Benaroya Research Institute, Seattle, USA

Acknowledgements The authors would like to thank the Anthony Nolan Histocompatibility Laboratories and the Department of Clinical Immunology, Hammersmith Hospital, Imperial College Healthcare NHS Trust for HLA typing subjects; Allergopharma, Germany for supplying rPhl p 5; ALK Abello, Denmark for supplying nPhl p 5. The authors acknowledge the support of the NIHR Imperial BRC multi-parameter flow cytometry and confocal imaging facility, Hammersmith Campus.

Contributors Conception, design, acquisition of data, analysis and interpretation of data: RJB, SJT. Drafting article and/or revising article critically for important intellectual content: RJB, SJT, DMA, SRD. All the authors contributed to either the acquisition of data and/or analysis and interpretation of data. Recruitment and characterisation of study subjects: AG-K, EJR, SJT, SRD. HLA-DR1 (DRA*0101/DRB1*0101) A β mice transgenics: DMA. TGEN analysis: WWK. T-cell epitope mapping in HLA-DR1 transgenics: EJR, CJR, RJB. Isolation and culture of human PBMCs and tetramer analysis: EJR, LRS, SJT, RJB. Peptide binding studies: BM. Murine peptide treatment and T-cell assays: CJR, RJB. Microarray and real-time PCR analysis: KJQ, CJR, RJB. HLA-DR1 genotyping and breeding: AG-K, KJQ, CJR, RJB. All authors were involved in writing and revising the final article prior to submission.

Funding This study was funded by Asthma UK (RJB, SJT, SRD); Medical Research Council and Asthma UK Centre in Allergic Mechanisms of Asthma, UK PhD studentships (EJR, KJQ); The Health Foundation and Academy of Medical Sciences Clinician Scientist Fellowship (SJT); The Welton Foundation (RJB); Royal Brompton and Harefield Charitable Trust (RJB, SJT, SRD); WWK is supported by NIH NIAID. The NIHR Imperial BRC multi-parameter flow cytometry and confocal imaging facility, Hammersmith Campus supported this work.

Competing interests SRD reports grants and personal fees from ALK-Abello, grants and personal fees from Merck, personal fees from Circassia, outside the submitted work; Dr Till reports grants from ALK-Abello, outside the submitted work; the rest of the authors declare that they have no conflict of interest.

Ethical approval The study was approved by the Royal Brompton and Harefield NHS Trust Ethics Committee (06/Q0404/43) and all participants gave written informed consent to participate.

Provenance and peer review Not commissioned; externally peer reviewed.

REFERENCES

- Meltzer EO. The prevalence and medical and economic impact of allergic rhinitis in the United States. *J Allergy Clin Immunol* 1997;99(6 Pt 2):S805–28.
- Durham SR, Walker SM, Varga EM, *et al.* Long-term clinical efficacy of grass-pollen immunotherapy. *N Engl J Med* 1999;341:468–75.
- Durham SR, Emminger W, Kapp A, *et al.* SQ-standardized sublingual grass immunotherapy: confirmation of disease modification 2 years after 3 years of treatment in a randomized trial. *J Allergy Clin Immunol* 2012;129:717–25 e5.
- Walker SM, Durham SR, Till SJ, *et al.* Immunotherapy for allergic rhinitis. *Clin Exp Allergy* 2011;41:1177–200.
- Oldfield WL, Larche M, Kay AB. Effect of T-cell peptides derived from Fel d 1 on allergic reactions and cytokine production in patients sensitive to cats: a randomised controlled trial. *Lancet* 2002;360:47–53.
- Worm M, Lee HH, Kleine-Tebbe J, *et al.* Development and preliminary clinical evaluation of a peptide immunotherapy vaccine for cat allergy. *J Allergy Clin Immunol* 2011;127:89–97, e1–14.
- Muller U, Akdis CA, Fricker M, *et al.* Successful immunotherapy with T-cell epitope peptides of bee venom phospholipase A2 induces specific T-cell anergy in patients allergic to bee venom. *J Allergy Clin Immunol* 1998;101(6 Pt 1):747–54.
- Campbell JD, Buckland KF, McMillan SJ, *et al.* Peptide immunotherapy in allergic asthma generates IL-10-dependent immunological tolerance associated with linked epitope suppression. *J Exp Med* 2009;206:1535–47.
- Maguire P, Nicodemus C, Robinson D, *et al.* The safety and efficacy of ALLERVAX CAT in cat allergic patients. *Clin Immunol* 1999;93:222–31.
- Patel D, Couroux P, Hickey P, *et al.* Fel d 1-derived peptide antigen desensitization shows a persistent treatment effect 1 year after the start of dosing: a randomized, placebo-controlled study. *J Allergy Clin Immunol* 2013;131:103–9 e1–7.
- Schulten V, Greenbaum JA, Hauser M, *et al.* Previously undescribed grass pollen antigens are the major inducers of T helper 2 cytokine-producing T cells in allergic individuals. *Proc Natl Acad Sci U S A* 2013;110:3459–64.
- Chabre H, Gouyon B, Huet A, *et al.* Molecular variability of group 1 and 5 grass pollen allergens between Poideae species: implications for immunotherapy. *Clin Exp Allergy* 2010;40:505–19.
- Van Neerven RJJ, Arned J, Ipsen H. Phleum pratense-specific T cells of allergic rhinitis patients display a broader recognition pattern than Phleum pratense-specific serum immunoglobulin E. *Clin Exp Allergy* 2000;30:242–54.
- Jahn-Schmid B, Fischer GF, Bohle B, *et al.* Antigen presentation to the immunodominant T-cell epitope of the major mugwort pollen allergen, Art v 1, is associated with the expression of HLA-DRB1*01. *J Allergy Clin Immunol* 2005;115:399–404.
- Etto T, de Boer C, Prickett S, *et al.* Unique and cross-reactive T cell epitope peptides of the major Bahia grass pollen allergen, pas n1. *Int Arch All Appl Immunol* 2012;159:355–66.
- Knapp B, Fischer G, Van Hemelen D, *et al.* Association of HLA-DR1 with the allergic response to the major mugwort pollen allergen: molecular background. *BMC Immunol* 2012;13:43.
- Novak EJ, Liu AW, Gebe JA, *et al.* Tetramer-guided epitope mapping: rapid identification and characterization of immunodominant CD4+ T cell epitopes from complex antigens. *J Immunol* 2001;166:6665–70.
- Yang J, James EA, Huston L, *et al.* Multiplex mapping of CD4T cell epitopes using class II tetramers. *Clin Immunol* 2006;120:21–32.
- Cromwell O, Suck R, Kahlert H, *et al.* Transition of recombinant allergens from bench to clinical application. *Methods* 2004;32:300–12.
- Jutel M, Jaeger L, Suck R, *et al.* Allergen-specific immunotherapy with recombinant grass pollen allergens. *J Allergy Clin Immunol* 2005;116:608–13.
- Bousquet J, Khaltaev N, Cruz AA, *et al.* Allergic Rhinitis and its Impact on Asthma (ARIA) 2008 update (in collaboration with the World Health Organization, GA(2) LEN and Allergen). *Allergy* 2008;63(Suppl 86):8–160.
- Altmann DM, Douek DC, Frater AJ, *et al.* The T cell response of HLA-DR transgenic mice to human myelin basic protein and other antigens in the presence and absence of human CD4. *J Exp Med* 1995;181:867–75.
- Texier C, Pouvelle S, Busson M, *et al.* HLA-DR restricted peptide candidates for bee venom immunotherapy. *J Immunol* 2000;164:3177–84.
- Texier C, Pouvelle-Moratille S, Busson M, *et al.* Complementarity and redundancy of the binding specificity of HLA-DRB1, -DRB3, -DRB4 and -DRB5 molecules. *Eur J Immunol* 2001;31:1837–46.
- Pancré V, Georges B, Angyalosi G, *et al.* Novel promiscuous HLA-DQ HIV Nef peptide that induces IFN-gamma-producing memory CD4+ T cells. *Clin Exp Immunol* 2002;129:429–37.
- Venuprasad K. Cbl-b and itch: key regulators of peripheral T-cell tolerance. *Cancer Res* 2010;70:3009–12.

- 27 Venuprasad K, Huang H, Harada Y, *et al.* The E3 ubiquitin ligase Itch regulates expression of transcription factor Foxp3 and airway inflammation by enhancing the function of transcription factor TIEG1. *Nat Immunol* 2008;9:245–53.
- 28 Haselden BM, Kay AB, Larché M. Immunoglobulin E-independent major histocompatibility complex-restricted T cell peptide epitope-induced late asthmatic reactions. *J Exp Med* 1999;189:1885–94.
- 29 Macaubas C, Wahlstrom J, Galvao da Silva AP, *et al.* Allergen-specific MHC class II tetramer+ cells are detectable in allergic, but not in nonallergic, individuals. *J Immunol* 2006;176:5069–77.
- 30 Schramm G, Kahlert H, Suck R, *et al.* 'Allergen engineering': variants of the Timothy grass pollen allergen Phl p 5b with reduced IgE-binding capacity but conserved T cell reactivity. *J Immunol* 1999;162:2406–14.
- 31 Salo PM, Calatroni A, Gergen PJ, *et al.* Allergy-related outcomes in relation to serum IgE: results from the National Health and Nutrition Examination Survey 2005–2006. *J Allergy Clin Immunol* 2011;127:1226–35.
- 32 Oseroff C, Sidney J, Kotturi MF, *et al.* Molecular determinants of T cell epitope recognition to the common Timothy grass allergen. *J Immunol* 2010;185: 943–55.
- 33 Safford M, Collins S, Lutz MA, *et al.* Egr-2 and Egr-3 are negative regulators of T cell activation. *Nat Immunol* 2005;6:472–80.
- 34 Jeon M, Atfield A, Venuprasad K, *et al.* Essential role of the E3 ubiquitin ligase Cbl-b in T cell anergy induction. *Immunity* 2004;21:167–77.
- 35 Ghoreschi K, Laurence A, O'Shea JJ. Janus kinases in immune cell signaling. *Immunol Rev* 2009;228:273–87.
- 36 Gagliani N, Magnani CF, Huber S, *et al.* Coexpression of CD49b and LAG-3 identifies human and mouse T regulatory type 1 cells. *Nat Med* 2013;19:739–46.
- 37 Ernst A, Avvakumov G, Tong J, *et al.* A strategy for modulation of enzymes in the ubiquitin system. *Science* 2013;339:590–5.
- 38 Micel LN, Tentler JJ, Smith PG, *et al.* Role of ubiquitin ligases and the proteasome in oncogenesis: novel targets for anticancer therapies. *J Clin Oncol* 2013;31:1231–8.