



Chronic exposure to outdoor air pollution and lung function in adults

L J L Forbes,¹ V Kapetanakis,¹ A R Rudnicka,¹ D G Cook,¹ T Bush,² J R Stedman,²
P H Whincup,¹ D P Strachan,¹ H R Anderson¹

See Editorial, p 645

► An Appendix is published online only at <http://thorax.bmj.com/content/vol64/issue8>

¹ Division of Community Health Sciences, St George's, University of London, London, UK; ² AEA Energy & Environment, Harwell, Didcot, UK

Correspondence to:

Dr L J L Forbes, Division of Community Health Sciences, St George's, University of London, Cranmer Terrace, London SW17 0RE, UK; lindsay.forbes@iop.kcl.ac.uk

Disclaimer: Data from the Health Survey for England are Crown Copyright and were used by permission of the Department of Health, UK Office for National Statistics and the Data Archive, University of Essex, UK. Neither the Department of Health, the Data Archive nor the Office for National Statistics bears any responsibility for the analysis and interpretation presented here. The views expressed in this paper are those of the authors and not necessarily those of the funding agencies.

Received 10 October 2008
Accepted 24 February 2009
Published Online First 8 April 2009

ABSTRACT

Background: The extent to which chronic exposure to outdoor air pollutants influences lung function in adults is unclear. The aim of this study was to measure the association between chronic exposure to outdoor air pollutants and adult lung function.

Methods: The relationship between measures of lung function (forced expiratory volume in 1 s (FEV₁) and FEV₁ as a percentage of forced vital capacity (FVC)) and average exposure to particulate matter <10 µm in diameter, nitrogen dioxide, sulfur dioxide and ozone was examined in four representative cross-sectional surveys of the English population aged ≥16 in 1995, 1996, 1997 and 2001. Year-specific estimates were pooled using fixed effects meta-analysis.

Results: Greater exposure to particulate matter <10 µm in diameter, nitrogen dioxide and sulfur dioxide was associated with lower adult FEV₁. The size of the effect on population mean FEV₁ was about 3% for particulate matter <10 µm, and 0.7% for nitrogen dioxide and sulfur dioxide, for a 10 µg/m³ increase in pollutant concentration. The effects were most marked in men, older adults and ex-smokers. FEV₁ was not associated with ozone concentration. No associations were found between the pollutants and FEV₁ as a percentage of FVC.

Conclusions: Chronic exposure to outdoor air pollution is associated with modestly reduced FEV₁ in adults.

The extent to which long-term exposure to outdoor air pollution accelerates adult decline in lung function, increasing risk of chronic respiratory disease and dying of cardiovascular disease, is unclear.^{1–2} Cohort studies suggest that outdoor air pollution increases the rate of adult lung function decline, but they examined few geographical areas, so there may have been residual confounding.^{3–6}

Cross-sectional studies have supported the idea that chronic exposure to air pollution reduces adult lung function, but the size of the effect and which pollutants are responsible remains unclear. A study in Switzerland found lower forced vital capacity (FVC) and forced expiratory volume in 1 s (FEV₁) in non-smokers exposed to higher levels of air pollution.⁷ A national US study found lower FVC in areas with higher total suspended particles.⁸ In California, non-smoking men (but not women) with a family history of respiratory disease exposed to higher particulate matter <10 µm in diameter (PM₁₀) had a lower FEV₁.⁹ Women in their fifties in the German Rhine–Ruhr basin had a lower FEV₁ in areas with higher PM₁₀ and nitrogen dioxide (NO₂).¹⁰

We aimed to study the association between chronic exposure to outdoor air pollution and lung

function. We examined whether average exposure to outdoor air pollutant levels of PM₁₀, NO₂, sulfur dioxide (SO₂) and ozone (O₃) was related to lung function in several cross-sectional studies of English adults.

METHODS

Participants and outcome measures

The Health Survey for England is a programme of annual surveys designed to generate large samples representative of the English population. We used data from 1995, 1996, 1997 and 2001, years in which lung function was measured in adults.

In each survey year, adults were recruited using a multistage sampling strategy.^{11–12} Briefly, the sampling units were single postcode sectors, except where the population was sparse, where they consisted of two or more neighbouring sectors. For each year, 720 sampling units (648 in 1997) were selected with probabilities proportional to the number of addresses within them. From each sampling unit, addresses were drawn: 18 in 1995 and 1996; 11 in 1997; and 19 in 2001 (fewer for adults in 1997 because the survey was designed to undersample adults and oversample children). All adults (up to a maximum of 10) living in each household at those addresses were invited to complete a questionnaire and offered a nurse visit to have lung function measured, unless pregnant, had had recent major surgery or had been recently admitted to hospital with a heart complaint or stroke.

Lung function measurements were taken using Vitalograph Escort Spirometers. Participants stood, unless chairbound. We used the highest of five attempts to perform FEV₁, as long as the participant completed one or more satisfactory blows, defined as (1) good timing of start of expiration; (2) no laughing or coughing; (3) no breath-holding; (4) no leak; and (5) no obstruction.

We analysed data only on participants who reported that they belonged to white ethnic groups, because the numbers in other ethnic groups were small and ethnically heterogeneous.

Exposure

We have described methods for assigning exposure in our previous publication.¹³ Briefly, the National Centre for Social Research provided postcode sector of residence for all households in the Health Survey. We assumed that annual average pollutant exposure for people living in each postcode sector was that of the 1 km² containing its centroid. We estimated annual average

background exposure to PM₁₀, NO₂, SO₂ and O₃ for each 1 km² of England using air dispersion models employing meteorological parameters and an emission inventory.¹⁴ We averaged the exposure estimate for each participant for each pollutant for the data collection year and the previous year.

Statistical analysis

Measures of pollutant exposure were at postcode sector level, and up to six adults living in each household had data on lung function. Therefore, we used multilevel linear regression analyses to allow for this hierarchical data structure. We carried out regression analyses for each pollutant singly for each year, controlling initially for age (in 10-year groups); sex; height; and all two-way interactions between these variables as fixed effects, because associations of FEV₁ with age and height differed between men and women. We additionally adjusted for, as fixed effects: social class of head of household; smoking status (never-smoker; ex-smoker (in pack-years); current smoker (in pack-years)); passive smoking in non-smokers (dichotomous variable based on a question about tobacco smoke exposure in the home); region (eight postal regions of roughly equal size by population); and month of nurse visit. Individuals with missing values on categorical covariates were included in the analyses as a separate group. Similar analyses were performed with FEV₁/FVC as the outcome without adjusting for height but including the interaction between age and sex followed by the same additional adjustments as for FEV₁. We pooled survey year-specific estimates using fixed effects meta-analysis for each air pollutant with inverse variance weighting.

We examined the associations with FEV₁ by sex, age group, smoking status and excluding people who reported having bronchitis, emphysema or asthma. We carried out all analyses using STATA version 10 (STATA Corporation, Austin, Texas, USA).

Ethical approval

The National Centre for Social Research obtained ethical approval from all relevant Research Ethics Committees. Participants provided consent to take part in the surveys. We obtained approval to link air pollution and Health Survey for England data by postcode sector from the National Centre for Social Research, having undertaken additional procedures to protect participants' identities.

RESULTS

In 1995, 1996, 1997 and 2001, 56 727 of 61 799 (92%) adults aged ≥16 living in 32 712 households who participated in the Health Survey for England (77% of eligible households) completed a health questionnaire; 53 161 belonged to white ethnic groups. Table 1 shows responses to the questionnaire and lung function measures. Overall, we had lung function results for 42 975 white adults (81% of those who had completed a questionnaire and were, therefore, eligible for a nurse visit). Of these, we had air pollution exposure data for 94% in 1995, 95% in 1996 and 1997, and 99% in 2001. Table 2 shows the characteristics of white adults with and without lung function results. People with lung function results were more likely to be male, aged under 75, of non-manual social class and have slightly lower exposure to PM₁₀, NO₂ and SO₂, and slightly higher exposure to O₃ than those without.

Descriptive statistics

Table 3 shows summary lung function statistics for white adults. Table 4 shows correlations between pollutant concentrations for

each of the survey years. PM₁₀ and NO₂ concentrations were highly correlated.

Associations between pollutants and FEV₁

Figure 1 shows the associations between each pollutant and FEV₁ adjusted for age, sex and height, and their two-way interactions combined, using fixed effects meta-analysis over the four survey years (Model A), and additionally adjusted for active smoking, passive smoking, social class, region and season, for each survey year and combined using fixed effects meta-analysis (Model B).

Particulate matter <10 µm in diameter

Combining the results of all the years' analyses showed that a 10 µg/m³ difference in PM₁₀ across postcode sectors was associated with a lower FEV₁ by 111 ml (Model A). In the fully adjusted model, Model B, the combined estimate was reduced to 92 ml (3% of the population mean FEV₁), and was larger in men (−120 ml, 95% CI −176 to −65 ml) than in women (−65 ml, 95% CI −103 to −26 ml). After excluding people reporting bronchitis, emphysema or asthma, the combined adjusted estimate was −81 ml, 95% CI −118 to −44 ml.

Nitrogen dioxide

Combining the results of all the years' analyses showed that a 10 µg/m³ difference in NO₂ across postcode sectors was associated with a lower FEV₁ by 32 ml (Model A). In the fully adjusted model, Model B, the combined estimate was reduced to 22 ml (0.7% of the population mean FEV₁) and was larger in men (−30 ml, 95% CI −42 to −17 ml) than in women (−16 ml, 95% CI −24 to −7 ml). After excluding people reporting bronchitis, emphysema or asthma, the combined adjusted estimate was −20 ml, 95% CI −28 to −12 ml.

Sulfur dioxide

Combining the results of all the years' analyses showed that a 10 µg/m³ difference in SO₂ across postcode sectors was associated with a lower FEV₁ by 54 ml (Model A). In the fully adjusted model, Model B, the combined estimate was reduced to 22 ml (0.7% of the population mean FEV₁), and was larger in men (−33 ml, 95% CI −55 to −12 ml) than in women (−12 ml, 95% CI −27 to 3 ml). After excluding people reporting bronchitis, emphysema or asthma, the combined adjusted estimate was −18 ml, 95% CI −33 to −4 ml.

Ozone

In contrast to the results for PM₁₀, NO₂ and SO₂, combining the results of all the survey years showed that a 10 µg/m³ difference in O₃ was associated with a higher FEV₁ by 22 ml, after controlling for age, sex and height and their interactions (Model A). After further adjustment for pack-years of active smoking, passive smoking, social class, region and season (Model B), the effect was reduced to 4 ml. There was evidence of heterogeneity between the survey years; random effects analysis gave a combined fully adjusted effect size of 10 ml, 95% CI −42 to 61 ml. Effects in men and women were very similar (data not shown). We repeated the analysis also adjusting for NO₂ concentration; the size of the association was unchanged.

Effects in different age groups

Figure 2 shows the results of adjusted analyses stratified by age group combined for all survey years, adjusted for Model B

Table 1 Response to questionnaires and lung function testing in adults in the Health Survey for England

	1995	1996	1997	2001
Adults living in participating households	17 355	17 656	9300	17 488
Adults who completed health questionnaire (% of adults in participating households)	16 055 (92.5)	16 443 (93.1)	8582 (92.3)	15 647 (89.5)
White adults who completed questionnaire	15 119	15 410	8086	14 546
White adults with lung function measures (% of white adults who completed questionnaire)	12 428 (82.2)	12 969 (84.2)	6829 (84.5)	10 749 (73.9)
White adults with complete data on lung function, covariates and all four pollutants (% of white adults who completed questionnaire)	11 400 (75.4)	11 963 (77.6)	6359 (78.6)	10 607 (72.9)

variables. The associations for PM₁₀, NO₂ and SO₂ increased with age. In the over-75 age group, a 10 µg/m³ difference in PM₁₀ was associated with a 169 ml lower FEV₁; NO₂ with a 39 ml lower FEV₁; and SO₂ with a 46 ml lower FEV₁. For O₃, the associations showed the opposite pattern, but all the 95% CIs were compatible with no effect.

Effects by smoking status

Figure 3 shows the results of adjusted analyses stratified by smoking status combined for all the survey years. All estimates were adjusted for Model B variables. The association of FEV₁ with PM₁₀, NO₂ and SO₂ was greatest in ex-smokers and was smaller and similar in current and never-smokers. To assess whether this had occurred because ex-smokers were over-represented among people with chronic obstructive airways disease, we repeated this analysis excluding people who reported bronchitis, emphysema or asthma; the results were very similar. We also examined whether the finding was due to differential reporting of the number of cigarettes smoked or duration of smoking by current and ex-smokers by examining the association without controlling for pack-years of smoking, and the results were very similar. For O₃, the associations showed the opposite pattern, but all 95% CIs were compatible with no association.

Associations between pollutants and FEV₁/FVC

Figure 4 shows the associations between each pollutant and FEV₁/FVC, adjusted for age, sex and their interaction, combining the four survey years (Model C), and additionally adjusted for pack-years, passive smoking, social class, region and month of nurse visit, for each year and combined (Model D). The combined effect sizes were all <0.2% per 10 µg/m³ difference in pollutant level and all 95% CIs were compatible with no association.

DISCUSSION

We found that adult FEV₁ was associated with average outdoor concentrations of PM₁₀, NO₂ and SO₂ estimated for postcode sector of residence. The size of the effect on population mean FEV₁, expressed for an increase in pollutant level of 10 µg/m³, was about 3% for PM₁₀, and 0.7% for NO₂ and SO₂. The associations were strongest in men, older adults and in ex-smokers, and were independent of active and passive smoking, social class, region and month of testing. FEV₁ was not associated with O₃ concentrations. We found no associations between the pollutants and FEV₁/FVC.

We have presented our findings per 10 µg/m³ increase in pollutant level. However, the interpretation depends on the variability of pollutant across England. Given an interquartile range (IQR) of PM₁₀ concentration of 3 µg/m³, an increase in PM₁₀ of one IQR would be associated with a FEV₁ lower by 28 ml. Given an IQR of NO₂ concentration of 14 µg/m³, an increase in NO₂ of one IQR would be associated with a FEV₁ lower by 31 ml. Given an IQR of SO₂ concentration of 5 µg/m³, an increase in SO₂ of one IQR would be associated with a FEV₁ lower by 11 ml.

Our findings are compatible with other cross-sectional studies examining the effect of air pollution on adult lung function. The SAPALDIA (Study on Air Pollution and Lung Diseases in Adults) study of adults living in eight areas of Switzerland found that a 10 µg/m³ increase in annual mean PM₁₀ was associated with a 2% reduction in FEV₁, a 1% reduction in SO₂ and a 1% reduction in NO₂ in healthy never-smokers.⁷ However, in contrast to our findings, the researchers found larger effects for the association between FVC and PM₁₀ or SO₂: around a 3% reduction for a 10 µg/m³ increase, although <1% per 10 µg/m³ increase in NO₂. A cross-sectional study in women in Germany found a 5% reduction in FEV₁ and 1% reduction in FEV₁/FVC for a 7 µg/m³ increase in annual mean PM₁₀, and a 4% reduction

Table 2 Differences between white adults with and without lung function data in the Health Survey for England

	1995		1996		1997		2001	
	With data	No data	With data	No data	With data	No data	With data	No data
Total number of white adults	12 428	2691	12 969	2441	6829	1257	10 749	3797
Male (%)	5815 (46.8)	1075 (40.0)	6038 (46.6)	955 (39.1)	3208 (47.0)	451 (35.9)	4985 (46.4)	1491 (39.3)
Aged 16–44 (%)	6095 (49.0)	1242 (46.2)	6257 (48.2)	1079 (44.2)	3323 (48.7)	604 (48.1)	4870 (45.3)	1786 (47.0)
Aged 45–74 (%)	5360 (43.1)	1076 (40.0)	5693 (43.9)	958 (39.3)	3002 (44.0)	479 (38.1)	5027 (46.8)	1443 (38.0)
Aged 75 and over (%)	973 (7.8)	373 (13.9)	1,019 (7.9)	404 (16.6)	504 (7.4)	174 (13.8)	852 (7.9)	568 (15.0)
Manual occupation* (%)	5786 (48.6)	1385 (56.6)	5954 (48.1)	1226 (50.2)	3225 (48.8)	642 (53.6)	4746 (45.1)	1752 (48.1)
Median PM ₁₀ (IQR) (µg/m ³)	19.2 (3.6)	19.4 (3.5)	20.5 (3.2)	20.8 (3.1)	19.9 (3.1)	20.3 (3.0)	15.7 (2.2)	16.1 (2.3)
Median NO ₂ (IQR) (µg/m ³)	24.2 (16.3)	26.0 (15.3)	31.0 (14.6)	32.2 (15.2)	36.4 (14.6)	38.4 (13.8)	23.3 (10.6)	24.5 (11.7)
Median SO ₂ (IQR) (µg/m ³)	9.3 (7.5)	9.8 (7.5)	9.2 (7.6)	9.4 (7.6)	9.2 (7.2)	9.4 (7.6)	3.8 (2.7)	3.8 (2.9)
Median O ₃ (IQR) (µg/m ³)	53.4 (5.0)	53.5 (4.2)	51.8 (4.3)	51.5 (3.8)	50.7 (3.8)	50.2 (2.6)	51.8 (5.9)	51.1 (5.8)

*Occupation of the head of the household; % is of the number with data on social class.
IQR, interquartile range; PM₁₀, particulate matter <10 µm in diameter.

Table 3 Lung function values in white adults in the Health Survey for England

Survey year	Male			Female		
	16–44 Mean (SD)	45–74 Mean (SD)	75 and over Mean (SD)	16–44 Mean (SD)	45–74 Mean (SD)	75 and over Mean (SD)
1995						
Number	2879	2527	409	3216	2833	564
FEV ₁ (litres)	4.30 (0.72)	3.09 (0.87)	2.13 (0.63)	3.16 (0.52)	2.24 (0.60)	1.44 (0.45)
FEV ₁ /FVC (%)	82 (8)	75 (11)	71 (12)	84 (8)	78 (10)	75 (11)
1996						
Number	2931	2686	421	3326	3007	598
FEV ₁ (litres)	4.32 (0.72)	3.17 (0.87)	2.12 (0.64)	3.17 (0.52)	2.29 (0.61)	1.47 (0.4)
FEV ₁ /FVC (%)	82 (8)	76 (10)	71 (12)	84 (8)	79 (9)	76 (11)
1997						
Number	1577	1428	203	1746	1574	301
FEV ₁ (litres)	4.33 (0.74)	3.18 (0.84)	2.13 (0.70)	3.17 (0.52)	2.31 (0.61)	1.50 (0.48)
FEV ₁ /FVC (%)	83 (8)	77 (11)	71 (13)	84 (8)	79 (9)	76 (12)
2001						
Number	2256	2365	364	2614	2662	488
FEV ₁ (litres)	4.30 (0.75)	3.19 (0.85)	2.13 (0.65)	3.14 (0.54)	2.32 (0.59)	1.48 (0.45)
FEV ₁ /FVC (%)	83 (8)	78 (11)	73 (12)	85 (8)	80 (9)	76 (11)

FEV₁, forced expiratory volume in 1 s; FVC, forced vital capacity.

in FEV₁ and 1% reduction in FEV₁/FVC for a 16 µg/m³ increase in annual mean NO₂.¹⁰

Strengths of our study were that it was large, with a high level of participation, and allowed us to examine effects over a wide range of exposures and to incorporate individual data on potential confounders. The multilevel models allowed for the possibility that lung function in people living in one postcode sector or one household may be more similar to each other than people living elsewhere because they share other risk factors.

All methods of estimating individual exposure to air pollutants will misclassify exposure to a degree. Most commonly, researchers have used single monitoring station data to assign exposure to all individuals over large areas,¹⁵ which are likely to reflect individual exposure poorly. Other researchers have used population density¹⁶ or estimated traffic exposure¹⁷ to reduce exposure misclassification. Our method of estimating individual exposure to outdoor air pollutants is likely to mark an improvement on these measures, because we estimated exposure for small areas using emission inventories combined with air dispersion models taking into account meteorological information.¹⁴ The emission inventories were constructed using information on many influences on air pollution levels (including population density, emissions from roads from traffic activity data (daily flows for different vehicle types on each

major road link), vehicle fleet characteristics (age, relevant emission standard) and emission factors (emissions per km per vehicle), railways, airports, industry and domestic heating).¹⁸ While data on elements of the model for some of the km² in the grid were missing, cross-validation with monitoring station data showed high correlations (see Supplementary Appendix online); in addition, an independent comparison of the maps for PM₁₀ and NO₂ with monitoring data collected by local authorities showed good agreement.¹⁹ Generally, modelled NO₂ and O₃ show better agreement with monitoring station data than PM₁₀ and SO₂.

We estimated exposure for each individual from pollutant concentrations for the 1 km² closest to the centroid of the postcode sector of residence. It may be argued that postcode sectors are too large for this to reflect individual exposure accurately. However, our previous analyses have suggested that >97% of the variance in annual mean PM₁₀, NO₂, SO₂ and summer mean O₃ estimates is between postcode sectors, and <3% of the variance is within postcode sectors (data in Supplementary Appendix online). Moreover, most people with high levels of exposure to traffic-related pollutants live in urban and semi-urban areas, where postcode sectors have a relatively small area.

For people living very close to main roads, proximity to the road may be a better determinant of exposure than modelled levels. However, our study aimed not to examine the effect of living close to a main road on lung function, but instead the effect of air pollution on average population levels of lung function; people living close to main roads make up only a small proportion of the population.

Our findings assume that people do not spend significant periods of time in other postcode sectors with different patterns of exposure, for example at work. Our access to data on occupation was restricted to the Registrar-General's classification of occupations as part of the measures to protect the participants' identity. It is possible that people living in more polluted areas have greater exposure to pollutants affecting lung function at work, exaggerating the size of our estimates. Greater occupational exposure may partly explain the larger effects we observed in men.

Table 4 Correlations between modelled outdoor air pollutant concentrations by postcode sector

	Survey year			
	1995	1996	1997	2001
Number of postcode sectors	715	737	641	751
Correlation* between				
PM ₁₀ and NO ₂	0.93	0.92	0.90	0.90
PM ₁₀ and O ₃	−0.20	−0.35	−0.28	−0.47
PM ₁₀ and SO ₂	0.34	0.17	0.13	0.17
NO ₂ and O ₃	−0.20	−0.40	−0.39	−0.40
SO ₂ and O ₃	−0.29	−0.36	−0.30	−0.16
NO ₂ and SO ₂	0.31	0.31	0.29	0.18

*Pearson correlation coefficient.

PM₁₀, particulate matter <10 µm in diameter.

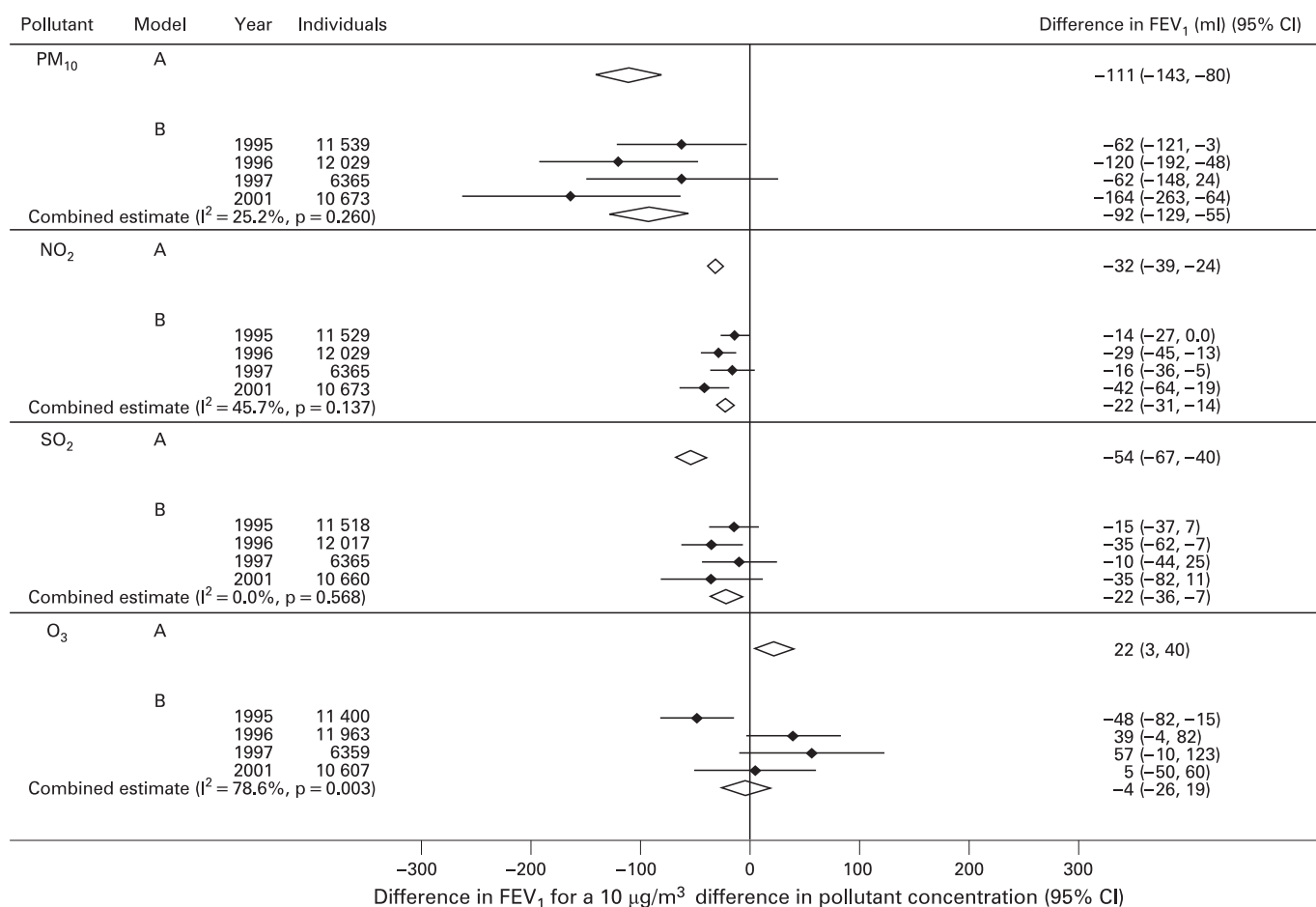


Figure 1 Associations between pollutant exposure and adult forced expiratory volume in 1 s (FEV₁). The diamonds labelled Model A represent the means and 95% CI for the association between FEV₁ and pollutants adjusted for age, sex, height and all their two-way interactions for all years (1995–1997, 2001) combined (fixed effects). Model B estimates show the means and 95% CI for the association between FEV₁ and pollutants for each year separately and combined (1995–7, 2001) in a fixed effects meta-analysis, after adjusting in addition for pack-years of active smoking, passive smoking (in non-smokers), social class, region and season. Weights are calculated from fixed effects meta-analysis. I^2 is a test of heterogeneity of the result for the different survey years. PM₁₀, particulate matter <10 µm in diameter.

Figure 2 Associations between pollutant exposure and adult forced expiratory volume in 1 s (FEV₁) stratified by age group. The diamonds represent means and 95% CI for the association between FEV₁ and pollutants combined for all the survey years (1995–1997, 2001), after adjusting for age, sex, height and all their two-way interactions, and additionally for pack-years of active smoking, passive smoking (in non-smokers), social class, region and season. Weights are calculated from fixed effects meta-analysis. PM₁₀, particulate matter <10 µm in diameter.

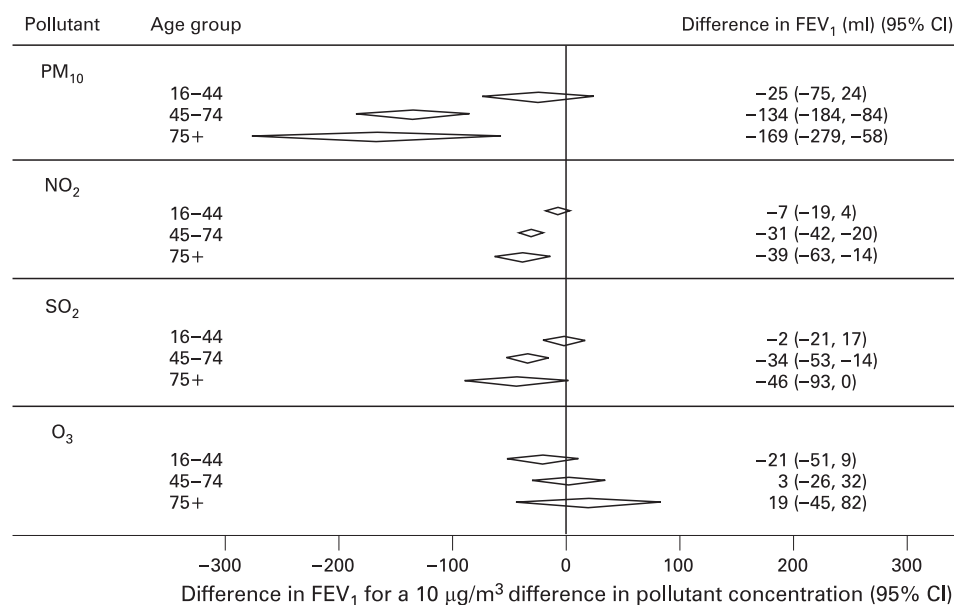


Figure 3 Associations between pollutant exposure and adult forced expiratory volume in 1 s (FEV₁) stratified by smoking status. The diamonds represent means and 95% CI for the association between FEV₁ and pollutants combined for all the survey years (1995–1997, 2001), after adjusting for age, sex, height and all their two-way interactions, and additionally for pack-years of active smoking, passive smoking (in non-smokers), social class, region and season. Weights are calculated from fixed effects meta-analysis. PM₁₀, particulate matter <10 µm in diameter.

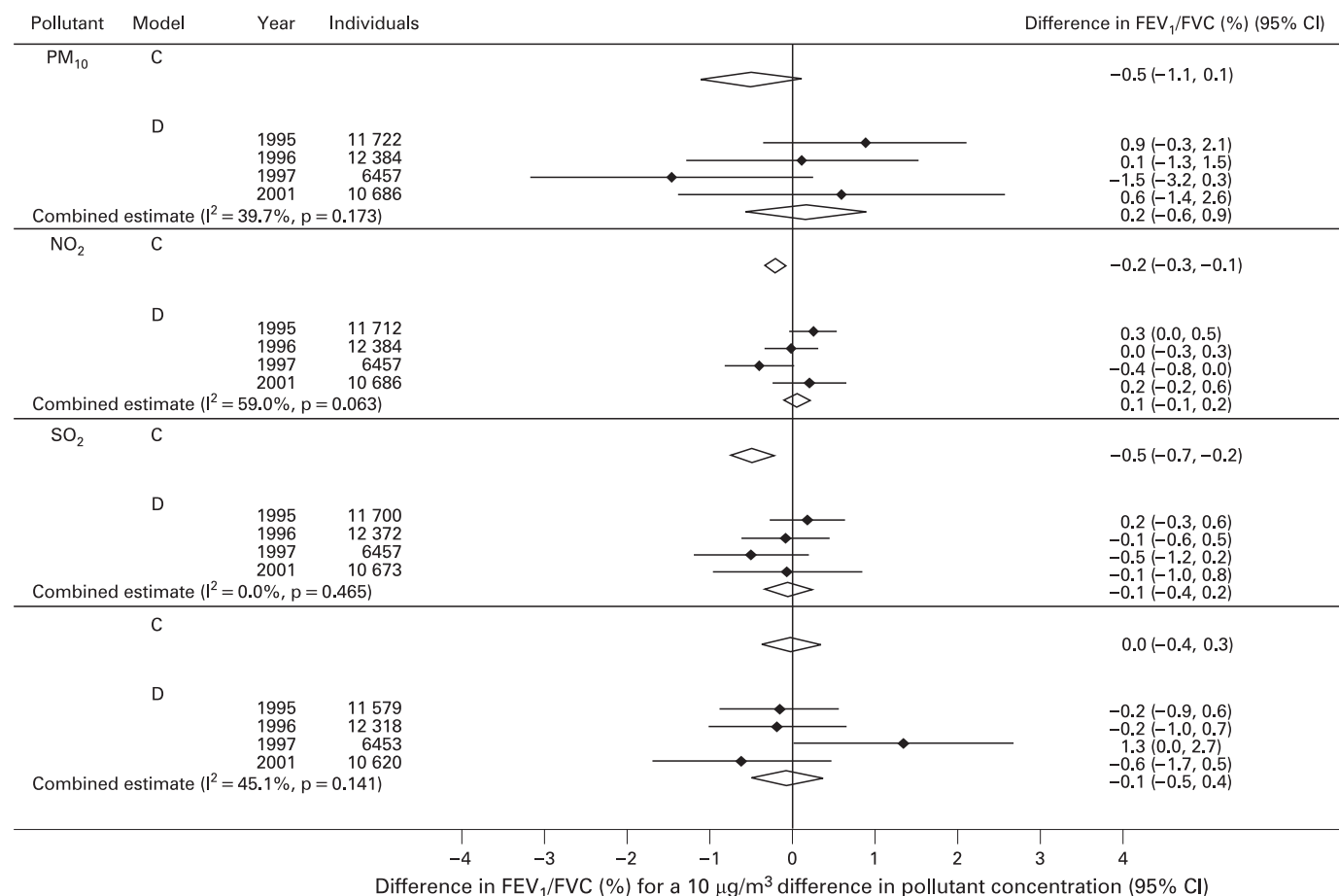
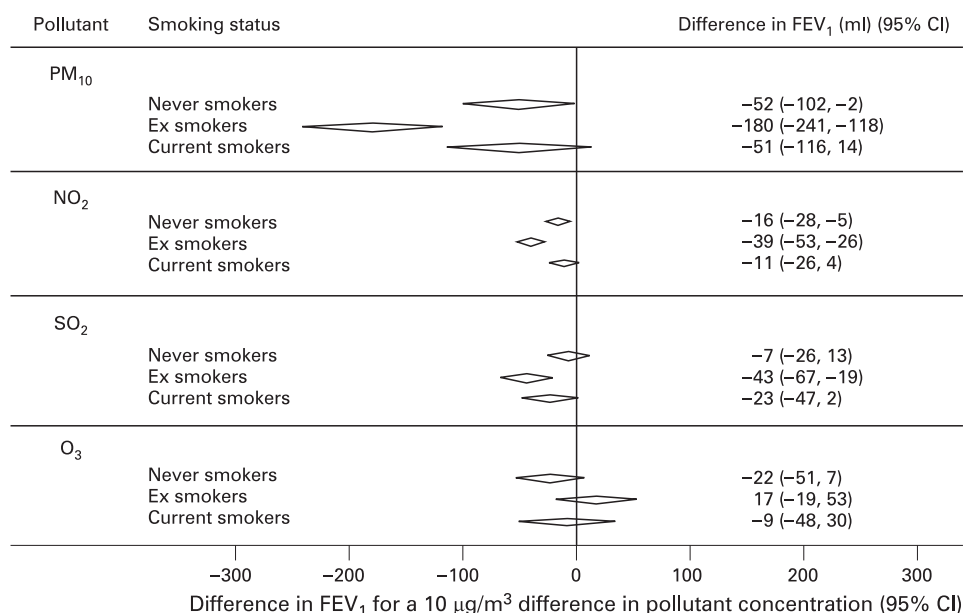


Figure 4 Associations between pollutant exposure and adult forced expiratory volume in 1 s (FEV₁)/forced vital capacity (FVC). The diamonds labelled Model C represent the means and 95% CI for the association between FEV₁/FVC and pollutants adjusted for age, sex and their two-way interactions, for all survey years (1995–1997, 2001) combined. Weights are calculated from fixed effects analysis. Model D estimates show the means and 95% CI for the association between FEV₁/FVC and pollutants for each year separately and combined (1995–1997, 2001), after adjusting in addition for pack-years of active smoking, passive smoking (in non-smokers), social class, region and season. Weights are calculated from fixed effects meta-analysis. I² is a test of heterogeneity of the result for the different survey years. PM₁₀, particulate matter <10 µm in diameter.

To conclude that chronic exposure to outdoor air pollution reduces lung function requires us to assume that participants had been living at their address for a long enough period of time to influence lung function. We did not have data on how long people had been living at their home, so we cannot be sure that our findings are not due to selective migration of people with better lung function into less polluted areas, and people with worse lung function to more polluted areas. However, we controlled for the major known determinants of adult lung function (age, sex, height, tobacco smoke exposure and social class) which makes this less likely. We were, however, unable to control for another determinant of lung function: maximum lung function achieved during lung growth. FEV₁ and FVC increase throughout childhood and fall progressively from a maximum in the third decade of life.²⁰ The deleterious effect of pollutants could occur at the time of lung growth²¹; if this is the case, our findings could be explained by the most heavily exposed individuals reaching lower maximum lung function in the third decade. We were unable to address this question in our study. However, a recent report of a cohort study as part of the SAPALDIA study found that areas with greater falls in PM₁₀ concentrations had reduced age-related decline in lung function,²² implying that at least some of the effect of air pollution on adult lung function is likely to occur during adulthood.

We found that ex-smokers had the strongest association between FEV₁ and pollutant levels, which we are unable to explain. It was unlikely to be due to people with lung disease giving up smoking, although it is possible that ex-smokers retain a propensity to the effects of inhaled irritants that falls short of clinical chronic obstructive pulmonary disease. We found that it was unlikely to be due to differential reporting of quantity and duration of smoking by current and ex-smokers.

The associations between FEV₁ and PM₁₀, NO₂ and SO₂ were greater in older people. This may be a cohort effect; in other words, that older people living in more heavily polluted areas have worse lung function as a result of higher air pollution exposure in the past. Levels of SO₂ and particulate matter in the UK have fallen dramatically over the last 50 years.²³ Another explanation is that elderly people are more susceptible to air pollution effects on the lung.

The most important pollutants in the UK now are those generated by road traffic: fine particulates and NO₂, and O₃, a secondary pollutant. It is important to note, however, that the pollutants we examined may simply be markers for other, more toxic, agents. We did not attempt to distinguish the effects of NO₂ and PM₁₀ because they were so highly correlated (as we would expect as the most important source of both is traffic). We attempted to establish whether the absence of effect of O₃ was due to the effect of the competing exposure to NO₂, but found no evidence for this.

Modelling of the SAPALDIA data suggested that a 3% shift in population mean FVC associated with a 10 µg/m³ increase in PM₁₀ concentration could lead to a 47% increase in prevalence of FVC ≤ 80% predicted.²⁴ Our findings suggest that PM₁₀, NO₂ and SO₂ exposure may be associated with reduced FEV₁ in adults. The magnitude of the effect may not be important for an individual, but our results imply that a 10 µg/m³ increase in PM₁₀ concentration (an order of magnitude similar to the difference in exposure between the most and the least polluted parts of the UK) could cause an average 3% shift downwards in the distribution of FEV₁. This could cause significant changes in

the prevalence of low FEV₁ and, therefore, of associated symptoms, prognosis and health service utilisation.

Funding: Department of Health, UK.

Competing interests: None.

Ethics approval: Ethical approval was obtained from all relevant Research Ethics Committees.

REFERENCES

1. **Sunyer J.** Urban air pollution and chronic obstructive pulmonary disease: a review. *Eur Respir J* 2001;**17**:1024–33.
2. **Sin DD, Wu L, Man SF.** The relationship between reduced lung function and cardiovascular mortality: a population-based study and a systematic review of the literature. *Chest* 2005;**127**:1952–9.
3. **Tashkin DP, Detels R, Simmons M, et al.** The UCLA population studies of chronic obstructive respiratory disease: XI. Impact of air pollution and smoking on annual change in forced expiratory volume in one second. *Am J Resp Crit Care Med* 1994;**149**:1209–17.
4. **van der Lende R, Kok T, Peset R, et al.** Longterm exposure to air pollution and decline in VC and FEV1. Recent results from a longitudinal epidemiologic study in the Netherlands. *Chest* 1981;**80**(Suppl 1):23–6.
5. **Sekine K, Shima M, Nitta Y, et al.** Long term effects of exposure to automobile exhaust on the pulmonary function of female adults in Tokyo, Japan. *Occup Environ Med* 2004;**61**:350–7.
6. **Jedrychowski W, Krzyzanowski M.** Ventilatory lung function and chronic chest symptoms among the inhabitants of urban areas with various levels of acid aerosols: prospective study in Cracow. *Environ Health Perspect* 1989;**79**:101–7.
7. **Ackermann-Lieblich U, Leuenberger P, Schwartz J, et al.** Lung function and long term exposure to air pollutants in Switzerland. Study on Air Pollution and Lung Diseases in Adults (SAPALDIA). *Am J Resp Crit Care Med* 1997;**155**:122–9.
8. **Chestnut LG, Schwartz J, Savitz DA, et al.** Pulmonary function and ambient particulate matter: epidemiological evidence from NHANES I. *Arch Environ Health* 1991;**46**:135–44.
9. **Abbey DE, Burchette RJ, Knutsen SF, et al.** Long-term particulate and other air pollutants and lung function in nonsmokers. *Am J Resp Crit Care Med* 1998;**158**:289–98.
10. **Schikowski T, Sugiri D, Ranft U, et al.** Long-term air pollution exposure and living close to busy roads are associated with COPD in women. *Respir Res* 2005;**6**:152–61.
11. **Joint Health Surveys Unit.** *Health Survey for England: the health of young people '95–97: Volume 2: methodology and documentation.* Primatesta P, Prescott-Clarke P, eds. London: The Stationery Office, 1998.
12. **Joint Health Surveys Unit: National Centre for Social Research, Department of Epidemiology and Public Health at the Royal Free and University College Medical School.** *Health Survey for England 2001: methodology and documentation.* Bajekal M, Primatesta P, Prior G, eds. London: The Stationery Office, 2002.
13. **Forbes L, Patel MD, Rudnicka A, et al.** Chronic exposure to outdoor air pollution and markers of systemic inflammation. *Epidemiology* 2009;**20**:245–53.
14. **Stedman JR, Bush TJ, Vincent KJ, et al.** UK air quality modelling for annual reporting 2003 on ambient air quality assessment under Council Directives 96/62/EC, 1999/30/EC and 2000/69/EC. Report AEAT/ENV/R/1790. Didcot, Oxfordshire: AEA Technology, National Environmental Technology Centre, 2005.
15. **Pope CA III, Burnett RT, Thun MJ, et al.** Lung cancer, cardiopulmonary mortality, and long-term exposure to fine particulate air pollution. *JAMA* 2002;**287**:1132–41.
16. **Hoek G, Brunekreef B, Goldbohm S, et al.** Association between mortality and indicators of traffic-related air pollution in the Netherlands: a cohort study. *Lancet* 2002;**360**:1203–9.
17. **Jerrett M, Burnett RT, Ma R, et al.** Spatial analysis of air pollution and mortality in Los Angeles. *Epidemiology* 2005;**16**:727–36.
18. **Dore CJ, Watterson JD, Murrells TP, et al.** UK emissions of air pollutants 1970 to 1994. AEAT/ENV/R/2359. Didcot, Oxfordshire: National Atmospheric Emissions Inventory, AEA Technology, National Environmental Technology Centre, 2007.
19. **Stedman JR, Handley C.** A comparison of national maps of NO₂ and PM₁₀ concentrations with data from the NETCEN 'Calibration Club'. AEAT/ENV/R/0725. Didcot, Oxfordshire: AEA Technology, 2001.
20. **Kerstjens HA, Rijcken B, Schouten JP, et al.** Decline of FEV1 by age and smoking status: facts, figures, and fallacies. *Thorax* 1997;**52**:820–7.
21. **Dockery DW, Skerrett PJ, Walters D, et al.** Development of lung function. In: *Effects of air pollution on children's health and development: a review of the evidence.* Bonn: World Health Organisation Europe, 2005:108–33.
22. **Downs SH, Schindler C, Liu L-JS, et al.** Reduced exposure to PM₁₀ and attenuated age-related decline in lung function. *N Engl J Med* 2007;**357**:2338–47.
23. **Ayres JG.** Trends in air quality in the UK. *Allergy* 1997;**52**(38 Suppl):7–13.
24. **Kunzli N, Ackermann-Lieblich U, Brandli O, et al.** Clinically "small" effects of air pollution on FVC have a large public health impact. Swiss Study on Air Pollution and Lung Disease in Adults (SAPALDIA). *Eur Respir J* 2000;**15**:131–6.